



Adel Bells

Parish Magazine 60p



The Church is open for private prayer

August 2020

Rector	Revd Alison Battye 25 Church Lane Adel LS16 8DQ alison.battye@leeds.anglican.org 267 3676
Churchwardens	Lucy Best-Shaw 73 Otley Old Road LS16 6HG 217 2963 lucybestshaw@yahoo.co.uk
	Alison Howarth Apt1, Garmont Court LS7 3RU 262 4622 ahowarth@hotmail.com
PCC Secretary	Andy Neal 468 Otley Road, LS16 8AE 07415 424 964 adelpccsecretary@gmail.com
PCC Treasurer	Bob Holloway 10 Adel Pasture LS16 8HU 267 9360 bob@hollowayassociates.co.uk
Planned Giving	Helen Hallett 217 8845
Choirmaster	
Music Group Leader	Chris Cunliffe 267 6767
Funeral Verger	Iain F. Welsh 267 9364
Assistant Funeral Verger	Lucy Best-Shaw 217 2963
Flower Rota	Lucinda Lillford 07795685870 (evenings only)
Weddings Verger	Sue Smith 261 0349
Assistant Verger /Librarian	Val Crompton 225 9142
email: vjcrompton@ntlworld.com	
Parents & Toddlers	Louise Summerfield 07525 455714
Children's Society	Lesley Walton 368 9622
Adel St John School Headmistress	Mrs Jane Hainsworth 261 1804
Parish Hall Bookings	
Weekend Bookings	Loveday Loveridge 07974 321466
Regular Bookings and	
Adel Bells Editor	Marjorie Cole 261 0069
Magazine Advertising	Beryl Thompson 267 3875
beryl890@btinternet.com	10 New Adel Gardens LS16 6BD
LS16 Churches Together:	Hilary Abbott 267 2714
Distribution:	Jenny Jones 225 7123
Website:	Trevor Cole 261 0069

Adel Bells (Please email copy by 10th of the month)	adelbellscm@gmail.com
Parish Hall Bookings Weekend Bookings Regular and Weekday Bookings	adelweekendbooking@gmail.com adeloldstables@gmail.com
Church Website Follow us on Facebook or Twitter	www.adelparishchurch.org.uk Adel Parish Church



The Parish Church of St John the Baptist, Adel
 Enquiries including Home Communions, Baptisms, Confirmation,
 Weddings, Funerals; please look at the church website
www.adelparishchurch.org.uk

Contents

Our Church

Rector Alison's Page	6
Churches Opening	7
A New tyoe of Service	8
Words from Pilgrim	9
In Brief	10
Penny's Ponders	11
A New Way of Life	13
A Sermon for our times	14

For your Interest

When One Person suffers	17
Adel History	18
Nature Notes	21
Joyce Hill	22
In Your Garden	23
History Talks	24
OPAL	25
York Gate Update	26
Barry Anderson	28
Billy Flynn	30

Regular Items

Puzzles	20
Solutions	31
List of Advertisers	55



Adel PCC Members

Lucy Best-Shaw, Bruce Buchan,
 Marisa Clayton, Marjorie Cole,
 Allan Dawson, Tina Gledhill,
 Helen Hallett, James Harrison,
 Bob Holloway, Alison Howarth,
 Sarah Johnson,
 Jenny Jones, Mary Larnar,
 Andrew Neal, Margaret Perkin,
 Mark Seaward, Lesley Walton,

Magazine Editors

Marjorie Cole
 Chris Madeley

Illustrators

Val Crompton
 Marjorie Cole

Parish Registers

Wedding

4th July

Jenny Bowman and Matthew Baran

Funerals

9th July

Paul Pragnell

14th July

Derrick Cole



Festivals & Feasts

6th August

Transfiguration of our Lord

15th August

The Blessed Virgin Mary

24th August

Bartholomew the Apostle



Where are you Lord?

Why is it that I think I must get
 somewhere, assume some
 position, be gathered together, or
 separated apart in the quest of my
 study to pray? Why is it that I feel
 |I have to go somewhere, or do
 some particular act to find you and
 talk with you? Your presence is
 here - in the city, on the busy bus,
 in the factory, in the cockpit of the
 aeroplane, in the hospital, in the
 patients' room, in the intensive
 care unit, in the waiting room, in
 the home at dinner, in the
 bedroom, in the family room, at
 my workplace, in the car, in the
 car park and at the traffic
 light. Lord, reveal your presence to
 me everywhere and help me
 become aware of your presence
 each moment of the day. May your
 presence fill the non-answers,
 empty glances and lonely times of
 my life.

(Robert Wood)



Unfortunately Church is not open for visitors



**We aim through Christian worship, word
and action to celebrate and share the love of
God with our neighbours**

From the Editor

At long last it has been deemed safe for us to distribute our magazine again. We are so sorry that many of you have been unable to access our digital editions. They have been available for people to read on our Church Website or Facebook page but sadly many of our regular readers have not been able to do that. So let's hope that this little bit of being back to normal will continue for the foreseeable future.

Towards the end of May I received a very pleasant but unexpected phone call. It was from the Chairman of the Association of Church Editors to tell me that Adel Bells had won the Gold Award in this year's competition. I have received a certificate which I have copied onto page 12 and in due time an engraved glass trophy will arrive, which we can keep for ever. You can imagine that a dull day had suddenly become something totally different. I get a lot of personal pleasure from creating the magazine each month, but I rely heavily on a dedicated band of contributors for the variety of articles I include. So, well

done everyone!

During Lockdown the magazines have been somewhat different—no more social events to advertise, no what's on page, no coffee mornings and no exciting Patronal Festival events to enjoy. However, Adel Church has continued to flourish, albeit in a totally different way, through social media and You Tube. Being able to take part in a virtual service on a Sunday morning has been a lifeline for so many people. Please read what Chris Madeley has to say about this on page 8. I have some good news for those of you who have not been able to access these services; from September there will be real live services in Adel Church, although numbers will be limited. We are due to start on 13th September, so watch out for further details in next month's magazine.

With reference to next month; we do not usually have a separate September issue, but this year because you have missed out on so many issues we are going to have one. It is still an uncertain future, but hopefully we are on the edge of things getting better and better.

Marjorie Cole

Rector Alison's Letter

A time for laughter?

Dear Friends

Last week I had the joy and privilege of doing some 'church sitting' with a fellow volunteer as we opened up our beautiful building for private prayer. It was incredibly moving to see parishioners praying once more in their church. I have to admit though, that we spent much of the time between visitors, laughing. We laughed at the fact that we kept putting things down and losing them; we laughed at each other as we tried to reach to hang welcome signs; sometimes we just laughed.

I had another really good laugh lately during 'Ace' our young people's group meeting on Zoom. One of the young leaders challenged us to fetch and put on as many layers of clothing as we could in 4 minutes. Soon we were all laughing; at how ridiculous we looked; at just how many items some people were wearing; at the fact that the clothes were rather more difficult to remove than put on! One of the parents remarked how good it was to hear the laughter. Perhaps I'm not the only one who is realizing I haven't laughed enough lately.

It's not that all has been doom and gloom. But the news has been difficult and worrying and we haven't been together with other people much.

Phone calls and zoom meetings have been wonderful life lines, but I think we laugh more when we can see each other properly, when short asides are not lost to the vagaries of an internet connection.

Those two recent occasions reminded me of the importance of laughter, physically and mentally. They reminded me to look for humour in situations; something I had lost sight of a little in the strange new world we've been living in.

It also brought back to me the central place humour and laughter have always played in my faith. It's very easy to take it very seriously, to take ourselves very seriously and to start to feel rather self-important. A good dose of laughter at ourselves is always a good antidote to that. I am sure Jesus must have laughed a lot. We rightly take his teachings seriously as we try to work out how to be his disciples today. But if we relax a little and put ourselves in the shoes of his first hearers, we notice how often he exaggerates, pokes fun. I suspect that to be in his crowds was to be swept between moments of awe, and waves of laughter.

One of my favourite pictures of Jesus is called the Laughing Christ. It is a line drawing of Jesus head and shoulders. No one else is in the picture, but Jesus' head is thrown

back in laughter in a way that only happens when we share a joke with friends. I love it because it reminds me how laughter helps us learn about ourselves.

There are hard times behind us, and there is probably a difficult path before us. We will need to be ready to lament, to weep over what we have lost. But I think we have a God who created us also for joy and laughter. I pray that this month that is traditionally a time for some rest and relaxation would also hold for you times of shared laughter, and that we will be ready to laugh at ourselves as we move on to the next phase of parish life.

With love, prayers and laughter,

Alison

Churches opening for public worship

I am sure you will be aware that places of worship are now allowed to open for services if they can do so safely.

You will also realise that with the relative sizes of our church and usual congregation this is going to be a considerable challenge in Adel Parish Church.

The PCC have decided to continue with online only services through the summer. This will give us time to consider alternatives, and prepare carefully to restart services safely.

This will take place on **Sunday September 13th**. Further information on how we manage this will follow.

In the meantime, the church is open for part of every day for private prayer. We are also planning some outdoor events for different groups over the summer.

Until distancing regulations are considerably reduced, the number we can accommodate in church will be quite low, so we intend to continue with online services for the foreseeable future. If you are not able to get online, you may like to make use of our phone replay service. By dialling the full number 0113 4678 478 each week, you will be able to hear the Gospel reading, Alison's sermon and a hymn from the Sunday service. Only costs the same as a local phone number.

If you have any questions, please contact the Rector or church wardens.

Private Prayer in Church

The church will be open for private prayer throughout August.

Sat 1.30 – 3.30pm

Sun 2 – 4pm

Mon 2 – 4pm; 6 – 7pm

Tues 10.30am – noon

Weds 2.30 – 4pm

Thurs 10am – noon; 6 – 7pm

Fri 6 – 7pm

A New Type of Service

Attending Church During Lockdown

I must say that when I heard that 'lockdown' included Church, I was absolutely horrified. No services, no communion, no hymns, no fellowship, no prayers together, no after-Church coffee – everything just seemed to be no, no, no – every which way just negativity.

Not for long! Thanks to technology, great technical ability, a committed choir, congregation members who are willing to read and pray for us, and a Rector, determined to love and look after her flock, fulfil her commitment and who has the tenacity of a Rottweiler, we have been able to enjoy our 10am Sunday service, right on time, or whatever time we wish should circumstances dictate. For all of the above, we thank God and ask for his blessings to be upon each and every one. Sadly, not everyone is able to enjoy this method of communication and our thoughts, prayers and love are with them always. The phone line has also proved to be vital, giving opportunity to hear part of the service to those with no internet access.

Keith and I decided to stick to our regular routine of Church, 10am Sunday, settling down ready to take as much a part as we can from the comfort of our sofas! The sitting

down part is probably the best bit about the dispersed Church – no pins and needles in the nether regions! Thankfully, our apartment is well sound-proofed otherwise our neighbours would be most alarmed to hear us singing along with the choir, speaking the responses together, standing up and saying the Peace, the latter being accompanied in the early days by Penny growling at us and wanting to join in!

It is wonderful how new people are joining with us in our distanced worship, not only locally, but others far away, hearing from friends or relatives about the Adel services. We have been able to pause, sit back and examine our lives, both spiritual and temporal, to look at priorities, loves, things we appreciate, things and people we may have not paid enough attention to and things to be grateful for.

God bless and keep everyone safe and well, both spiritually and mentally as we continue to walk together through these dark days. Hold tight to the hope that God has set before us to see us through the dark days into the light of His love.

Your Kingdom come,
Your will be done on earth as it is in heaven. Amen.

Chris Madeley

Words from Pilgrim

Reaching a new stage

This year has only just passed its midpoint, but looking back over the past months of coronaviral innovation and just glancing at the dawning reliefs from lockdown inconvenience, we may imagine ourselves to be standing on the brink not just of a return to familiar normality but into a new set of testing changes.

People will differ in their reaction to this; some will give a sigh of relief to see old familiarity returning whilst others will purse their lips and regret that the guideposts of the past months are to be dismantled and that new restrictions that we have not bargained for are all that will be offered to us. There is ground for grumbling there and there is also the chance for us to show a courageous spirit and to make tomorrow's way work.

It is in small integrated groups such as ours that lines of difference can carry the sharpest edges. Many of us have been caused to wonder how Christian people, all trying to follow God's will, can end up putting good friendships under great strain and failing in their Christian duty. From this point onward where this

question leads you is something you have to discover for yourself. I am going to refer you to the Old Testament and ask you to read 1 Samuel chapter 8 verses 1 to 22. The nation is split into two factions. Are the motives behind each faction honourable? Read the given passage again. Is there anything you would like to say to them if you could? Read verses 19-22 again. Was God taking one side rather than the other, or was he merely helping the problem forward towards a conclusion? Chapter 9 verses 1-27 takes the problem on to its next stage. The introduction of Saul was God's initiative and a step to God's resolution of the debate. Samuel was in a position to realise this, but were the people in chapter 8 verses 19-22 in a similar position or not? The problem is moving on to its resolution now.

At its centre stands Saul who was a nobody at the beginning - now he is at the forefront of this new stage in Israel's life. Read Chapter 10 v 1-8. The resolution of the problem within the people of God has been accomplished by the people simply obeying what they saw to be right. They had to be patient, but God has a way of accomplishing his ends when God's people live obediently to his will.

Your worst days are never so bad that you are beyond the reach of God's love; and your best days are never so good that you are beyond the need of God's love

In Brief

Children's Society Boxes

At this time of year, I start preparations for emptying our parish's Children's Society boxes from mid-August. However, at the time of writing, I don't know if this will be going ahead. The Society had to take the decision to suspend the process for May, June and July so I will have to wait for further information. If I am able to empty the boxes, I will put a note in next month's edition of Bells, and also contact box holders individually to discuss how I can do this.

Of course, the Society's work helping children and young people in Britain who feel scared, unloved and unable to cope continues and donations are needed now more than ever. If you would like more information, this can be found on the Society's website www.childrenssociety.org.uk or by contacting me.

Lesley Walton
07834 352 782

lesleywalton@hotmail.com

Black lives matter

I received a message from a friend who is retired but still working hard as a priest in Hackney. Rev. Doug Hiza had previously worked in Minnesota in the University where he counselled students. He conveys quite forcefully the damage done to

everybody in America who is affected by racism. You can read his story on page 17.

Siân Batchelder

The 100 Club Draw

The June draw winners are

1 Lesley Walton £77.00

2 Cathy Jackson £30.80

3 Chris Madeley £30.80



Penny's Ponders

Happy Summer Everyone!

Well, I don't know about you, but I'm hoping August has better weather than July! I know I complained last month about being too hot, but come on, drowning a dog isn't really an acceptable alternative! It's a good job my wool is short, otherwise it would be the hairdryer for me.

Although I say it myself, I'm excellent at missing the puddles and muddy bits – mud ruins my nails and why would you want to put your feet in dirty cold water? Did you know? I can walk the whole of the old stones on Long Causeway without treading on any cracks! I don't know of any dogs who can do that! Hate the cracks – they're full of gritty water, mud or beech mast, so I make it my business to give them a miss.

I enjoy looking for things. My Mum has finally cottoned on to the joy I get from finding hidden things and we have a new game. Ever mindful of the need for good dental and personal hygiene, I really enjoy these chewy sticks of tasty stuff which make my breath smell good. This is particularly important in case I see my favourite Dalmatian – I would hate to put him off me! Every night before I go to bed I get a pile of treats : four gravy bones (broken in half, thank you) and one of these sticks. I often save them until next morning so I can

play a game with them but sometimes if I get bored in the night, I eat them anyway. Back to my new game. Mum thinks she is being smart and takes an extra stick out of the lounge before shutting the door – so I get some peace and quiet during the night. She hides it, thinking she has fooled me and kept it for herself. She is forgetting one fundamental thing: my nose is hundreds of times cleverer than hers, so I always find it. Sometimes, if I'm feeling particularly devilish, I play a game back, find it, pretend not to and then go and hide it somewhere else. Another thing I do when I've found it; I go all silly and bark to tell her I've got it!

God likes us to find Him. He likes us to attend to our personal hygiene – I don't mean taking lots of baths and cleaning our teeth – He wants us to look at our spiritual hygiene which will make it easier for us to find Him. If we look carefully at our lives, our thoughts, our words, what we do for each other and how we do it, God is waiting for us to find Him somewhere in all of this, to bring us by the Holy Spirit through Jesus to His Kingdom where we can serve Him and be happy. God bless you and keep searching – God **will** be found by everyone who wants to find Him.

Woofs and licks,

Penny



A New Way of Life



Heavenly Father, we praise and thank you for our community of Adel, for the kindly deeds they have done, for the helping hands they have stretched out and for the love they have shown to all.

I think we have all suffered during Lockdown, some more than others. Loneliness has been a constant, particularly in the early weeks and for the shielded. However, here in Adel we have not been short of people ready to do kind deeds, helping with shopping, sending cards and letters of encouragement or telephoning to make sure people know they have not been forgotten. Those of you unable to access the internet have unfortunately lost out on some things, but hopefully you have been able to be the recipients of small acts of kindness.

Geoff and Margaret Steel have been only one of many to be the recipients of cards and letters, made and

delivered by Emily and Lucy Clarke. Their Mum Kate has helped them find their way round their own little world, following a map marked with where the people in need live. Little do those people know that they have also been helping Kate throughout these difficult months. A quick chat has helped to lift Kate's spirits as well as, hopefully, their own. It clearly was a two-way process. We certainly live in a community that cares. Kate said that the slowing down of their busy lives helped her appreciate what really matters: family and friends.

The younger members of our church family have had to adapt to a new way of life, to a new way of being connected to church and they have responded well to Rector Alison's requests for help. To make the return to church more welcoming, they have made colourful signs and posters.

Recently on one of the occasions when the church was open for private prayer, we received a very special gift. Some beautiful wooden pieces, created by pyrography (wood burning) representing a stained glass window in Adel Church, two of its doors and the sanctuary ring were presented by Rod Wood, who has been making good use of his 'lockdown' time. If you want to see them, go along when the church is open for prayer.

Marjorie Cole

A Sermon for our Times

Mathew 10. 5-8

These twelve Jesus sent out with the following instructions: 'Go nowhere among the Gentiles, and enter no town of the Samaritans, but go rather to the lost sheep of the house of Israel. As you go, proclaim the good news, "The kingdom of heaven has come near." Cure the sick, rise the dead, cleanse the lepers, cast out demons. You received without payment; give without payment

'Preachers are at their best when preaching about something they're bad at – because then they know the struggle.' So said Fr Timothy Radcliffe – Dominican friar, author of many books and wonderful preacher himself.

I offer his wisdom to you today, perhaps as an excuse, as I share the journey I've embarked on after the killing of George Floyd in Minneapolis on May 25th.

We've just heard Jesus send out his disciples to 'cure the sick, raise the dead, cleanse the lepers, cast out demons'. I suspect none of us take that as a literal instruction for today. In Jesus' time, the sick and lepers represented the margins of society... so perhaps we hear it as a call to be healers and restorers on the margins of **our** society. But what does that mean in 21st century Britain?

I've known for years that in Britain, BAME people are marginalised by the system. Growing up in Middlesbrough and working in East Leeds mean that Adel is the most racially mixed place I've ever lived. But still, I **knew**...

...I knew about the over representation of BAME people in prison,
...their under representation in positions of power,
...their under representation as clergy in the Church of England
...the scandal of Windrush deportations...

I knew but I suppose it felt too big to be my problem. 'The harvest is plentiful but the labourers are few.' What could I do? I focused on easier targets...speaking out at the rise of the BNP...criticising the US. So what's different this time?

Like everyone I was shocked by that almost casual killing in America – but what really jolted me was a 2018 video that resurfaced on Facebook. A video of a white American woman quietly challenging an audience of white Americans.

"Stand up", she said, "if you would be happy to be treated the way black people are treated in this country." No one stood –but their expressions suggested they knew how black

Please support our advertisers and mention Adel Bells

Americans are treated – and **certainly** wouldn't be happy to be treated that way.

I might have moved on, with prayers for America, and relief that I'm British. But her words stayed with me...made **me** uncomfortable. Not because I knew and did nothing, but when I realised I've never bothered to find out.

I've never studied, read more widely...but worse – I've never even asked my friends what it's like to live with the everyday racism that's part of our society. So last week I did. I asked two of my friends about their daily experiences of living as educated, successful, black women in Britain.

Of course some of you live this every day; others may be way ahead of me; but just in case I'm not the only one struggling, I'm going to share a little of what they said.

“On TV, in work, schools, institutions that govern our lives, we're not represented. Black role models and history aren't mainstream. Messages about black people relate to immigration, poverty in Africa, underperforming schools in BAME areas...all negative.

I struggle to find shows, films and dolls where my children can see people that look like them. Another issue is the beauty industry - as a

woman I feel marginalised because I can't find a hairdresser or hair products in a mainstream shop. For black girls growing up...all their friends talk about hair appointments, makeup they've bought...but **they** remain silent because they're embarrassed at having to go to Harehills to get those things.

I don't frequently speak about the issue myself as we are either dismissed or people say things that water down the issue, bringing up other forms of discrimination as if to prove that what we're highlighting really isn't that important. I'm made to feel I have a chip on my shoulder.

As in the argument of 'Black lives matter' vs. 'All lives matter', people just don't want to stay with what you've raised, they must point to something else. So eventually you just keep quiet.

Underlying all this is the deep hurt caused by the enslavement of Africans that led to loss of African heritage, black people having no wealth, continued explicit racism and covert messages that black people are not as good. Whilst England remembers the Holocaust every year, it doesn't give black people the healing that would be brought by remembering **their** suffering through slavery.

The tragedy of what happened to George Floyd personally brings to the fore all the challenges that I and

people with my skin colour face every day - explicit and covert messages from society throughout our whole lives that we are not as intelligent, beautiful, hard working, worthy, as 'white' people.

Just two people's everyday experiences...shocking. Now I have stories rather than statistics, and as Jesus knew so well – stories are what change us.

And I still feel overwhelmed – the harvest seems even more plentiful, what can my tiny bit of labour do? But I do know that when Jesus told his disciples to pray for more labourers – they found they were themselves the answer to that prayer. **They** were sent out to heal and restore. **They** were sent out with the message that God's love is for everyone.

Humanity has never found it easy to accept that we cannot love God and hate our neighbour – but **that** is the message we are given.

So what does Jesus' commission look like for me today? Well Jesus didn't just value everyone equally, he challenged a system that didn't...and I believe he calls me to do the same. And I'm starting with this definition of anti-racism...‘the commitment to fight racism wherever you find it – even in yourself.’

So I've listened to my friends – acknowledging that although there are

other forms of discrimination and hardship – **this is their** story, and I'm not qualified to speak only to listen and lament.

I've found black voices to listen to – and heeded their advice to educate myself...to listen and read. And if you find yourself on a similar journey – perhaps we can share resources and encourage one another.

Alison

The Work of Peace

Give us courage, Lord, to stand up and be counted,
to stand up for those who cannot stand up for themselves,
to stand up for ourselves when it is needful for us to do so.
Let us fear nothing more than we fear you.

Let us love nothing more than we love you,
for thus we shall fear nothing also.
Let us have no other God before you,
whether nation or party or state of church.

Let us seek no other peace but the peace which is yours,
and make us its instruments,
opening our eyes and our ears and our hearts
so that we should know always what work of peace we may do for you.

(Alan Paton - 1903 to 1988)

When One Person Suffers

“This is not a black issue or a white issue – this is a human being issue!!

These are the words of a school friend of George Floyd. Is it any wonder that it has captured the attention of the world to racism and inequality?

I am a white person and I first witnessed racism when I was 7 years old, living in Atlanta, Georgia. My father was friends with a black man, who often helped him out. One Saturday, after working on a house extension, John called my father saying he was under arrest for drunk driving. John had only left the house 30 minutes earlier and was a tee-total Baptist. My father got John released immediately but then discovered this was a routine practice every weekend – to arrest black men on trumped-up charges to get them to clean the streets over the weekend.

In 1970 we had black friends staying with us for a week. We had all planned to go out for dinner and arranged for our regular baby sitter to look after the children. She called us an hour before we were due to go out saying her parents refused to let her baby sit black children.

We can take to the streets and demonstrate till the cows come home; we can pull down statues by the dozen but this does little to

address the real issues that face the world today. Until we change the very hearts of human beings – nothing of real substance will change.

And that’s why Pauls’ passage from I Corinthians (12:12-27) is so relevant today, because, as Christians, you and I are not merely friends and acquaintances: NO, you and I **are the body of Christ**. And as such we are connected by a deep sense of **mutuality/fellowship!** If one part of the body suffers or is in pain, the whole body suffers and is in pain too. If just **one person** is being treated unjustly and is being discriminated against, like George Floyd, then we are all deeply affected by this.

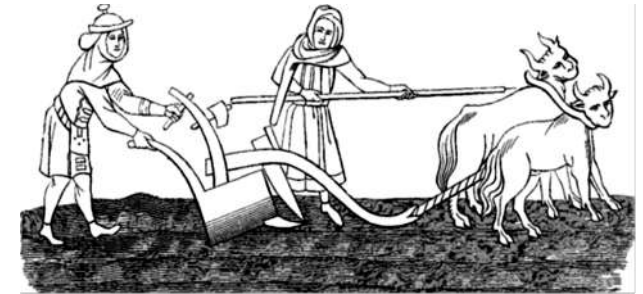
Only when we have started to address ‘racism’ together can we stand side by side and say – *This is what God’s Kingdom really looks like: human beings, black and white together; one body united; sharing our joys and sorrows; shouldering one another’s pain; tackling injustice so that everyone can live in peace together!*

Dr Martin Luther King said “*The arc of the moral universe is long, but it bends towards justice.*” But you and I must never forget that it does not bend on its own, but **only** when each one of us embraces the cause of **justice & equality** as a **shared responsibility**.

Rev. Doug Hiza

Adel History

A Red Light –
on looking out
of my window



A red light shines on Tinshill Tower.

This tall and now cluttered communications mast is only seventy years old - but when I look out of my window, towards the mast, across the open field, I see instead long shadows cast from distant past activities across this close-cut, wide expanse of grass - where peasants once farmed ridge and furrow strips, while Red Kites circle overhead.



Within this well-used landscape of almost-flat, sports pitches, are bands of trees - old oak, and ash and beech, planted, in Georgian times, to form, across glebe lands, a parkland view—a ‘*ferme ornée*’ for Rector Hardcastle from his grand, gritstone **Rectory**.

This park, now called ‘The Bedquilts’, is today a well-loved, public open space - to fly kites, to run, walk dogs or play; where my young grandsons seek and hide, inside the hollow oak, while Red Kites circle overhead.

I watch the early morning sun catch first,
 a patch of 'slightly-rippled bedquilts' ground -
 then light the tree-fringed backdrop of Tinshill,
 the highest point for miles around.
 And through the glass
 I know that what I see, is just a part
 of the precious, great, green heart of Adel -
 with its ancient, stone-walled,
 large, round burial ground, with wildflowers
 cradling our tiny **Norman Church**,
 where Red Kites circle overhead.



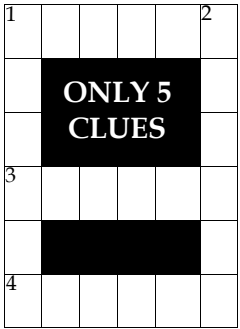
Sitting on my comfy-cushioned, window seat,
 I travel back in time - two thousand years
 and see two Iron Age, Round Houses
 standing, above Ireland Wood, on Tinshill -
 where you could look out and trace tracks
 across bleak moors and see, above valley woods,
Adel Crag - still a good place to climb
 and meet and eat - but even further back in time,
 this lone, great, gritstone, Sphinx-like landmark -
 was a meeting place for Stone Age hunters -
 and I have felt the sharpness
 of their flint arrowheads, found at this site,
 where Red Kites circle overhead

When skies are clear, you can stop
 and see York Minster from Tinshill Top -
 and on this day, in 1984, I saw from here
 the smoke and flames—the great fire
 as York's south transept blazed!
 And even in the darkest hour,
 like a small child's bedside lamp,
 it comforts me to see - that
 a red light shines on Tinshill Tower



Val Crompton 9 July 2020

Puzzles



ACROSS

1. Married girl in spite
3. Parents, heading off for rest
4. A posh couple's foreign helper?
(2,4)

DOWN

1. I'm so annoyed mother put out
plant
2. It does some writer a service

		R	
U		E	A
G			
S	A	K	

Word Square

Insert each of the
 following letters into the
 right cell, so that when
 the puzzle is completed
 each row and each
 column contains a real
 word.

E H D Z A R E E

A Mini Quiz

The following are definitions of words beginning with FU. The number of
 letters are given for each word.

1. Eaten enough (4)
2. Mattress originally from Japan (5)
3. A mushroom and a bogeyman (6)
4. Spiral type of pasta (7)
5. Places where you used to be able to win goldfish (8)
6. Escapees (9)
7. What you were if you were on 80% of your salary. (10)
8. Also (11)
9. Someone who predicts future behaviour and technology (12)
10. Extreme believers (15)

Solutions on page 31

Nature Notes

Identifying moths

In the early 1990s a friend (JB) asked me if it was OK for him to run his moth trap in Adel Dam Nature Reserve. Although I knew nothing about moths, I did have a moth trap that I had never used, so it was agreed that we would both go to the reserve and set our traps together. We mostly went on Saturday nights and then again early on Sunday mornings to examine the catch. JB insisted on taking the traps, complete with moths, home to be identified, and so the traps were loaded into his car for the trip to Headingley. If the weather was warm the moths would be quite lively and the slightest wobble or bump set some of them off on quest to escape, and soon the car was full of fluttering moths. Eventually we got them all- well most of them- into the house, and he could begin the identification process.

There are about 2,500 species of moths in Britain (compared to 59 species of butterfly). Of these about 1600 are very small - known as micros - and in those days hardly anybody bothered with micros because there was no identification book available. Only one man in Yorkshire was known to be able to identify micros, and if you wanted one identifying you had to send it to him. That leaves about 800 larger moths



(macros) and of course not all of them can be found in Yorkshire, but if you are trying to identify one you have not seen before there are 800 possibilities to look through.

There was only one book then that illustrated all the macro moths in colour. This was made up of photographs of the collection of moths compiled by a highly regarded entomologist. All the British species were shown, beautifully set up with all four wings in full view and the moth carefully pinned to a large sheet of card. Unfortunately most moths do not rest in that fashion, and so the moth you found in the trap often did not look quite like the preserved specimen. in the book. So identification was a big problem.

Micro moths have adopted smallness to allow them to exploit habitats that bigger insects cannot use. An example from the churchyard is the Horse Chestnut Leaf Miner moth that lives inside the horse chestnut leaf, eating the "flesh" of the leaf between the top and the underside. First recorded in Britain in 2002 there must be millions of them now, and nearly all horse chestnuts are affected. In the churchyard and elsewhere it seems that autumn has come in August, as all the leaves are reduced to brown.

Peter Larnar

Words from Joyce Hill

A Village in Quarantine

It would be odd to write a series of articles for 2020 without some reflection on the extraordinary circumstances we have been faced with in recent months. Fortunately, in the twenty-first century we can hope that medical science provides an effective vaccine and/or new ways of treating those who are ill.

There was a First Pandemic from the late sixth century to around 750. However, it is the Second Pandemic, the Black Death, which had the greatest impact. Beginning in or near China, it travelled along the Silk Road or by ship. By 1400 it had probably reduced the world population from an estimated 450 million to around 350-375 million, affecting the economies and social structures of the medieval world. It recurred in waves, with varying geographical distribution until, in the British Isles it died out in the mid-seventeenth century; the last occurrence being The Great Plague of London in 1665-66; it killed 70,000-100,000 Londoners out of a population of about 220,000-250,000. The rich fled to the country and families with infected members were boarded up in their houses.

Eyam, in Derbyshire, provides us with a striking example of social responsibility. When the plague arrived in 1665, the whole village

quarantined itself to stop the disease spreading locally. The church in Eyam records 273 individuals who died: a huge proportion of the population. By this selfless action other local villages were spared.

Allegedly, 1665 a flea-infested bundle of cloth arrived from plague-ridden London for the local tailor. A few days later, his assistant opened it up, so releasing the fleas. He very quickly died. The plague spread and the villagers turned for leadership to their rector, William Mompesson and to their recently- ejected Puritan minister, Thomas Stanley, who between them introduced stringent measures to control the spread. This included special measures for disposing of the bodies, the relocation of church services to the open-air so that villagers could observe social distancing, and the quarantining of the entire village, which no one could enter or leave. Whether or not you caught the disease seemed unpredictable. Elizabeth Hancock remained uninfected despite burying six children and her husband within eight days; and Marshall Howe, the village gravedigger, survived despite handling many infected bodies. But at last it died out. It is an inspiring example of social responsibility, and the village to this day honours the memory of their sacrificial decision. A visit to Eyam is a moving experience.

In Your Garden

"August rain: the best of the summer gone, and the new fall not yet born. The odd uneven time."

Sylvia Plath

Given the extraordinarily fine weather during the spring, the early summer was a bit of a disappointment. Let's hope that August tips the balance back a bit!

I hope you have already been enjoying your garden. There can still be more enjoyment to come with a little planning and care. In fact, whilst there are always a few delightful surprises, most of the pleasures in the garden are the reward for previous planning and care! To extend your enjoyment well into autumn you should deadhead flowers regularly. In many species this will encourage repeat flowering extending the season. For example Dahlias, roses and Penstemon are likely to benefit, but so too your hanging baskets and summer bedding. At this time of year do make sure you keep your hanging baskets and pots well-watered, plus any new plants that you have acquired this year. On a similar vein, make sure you keep ponds and water features topped up. August is a good time to prune your wisteria if you have one.

Throughout late summer and autumn is the time to be collecting seeds from perennials and hardy annuals. By collecting the seeds from



the plants you really like, you should be all set up for next year with even more of what you like and what is successful - and all for free!

Strange though it may feel, now is the time to be thinking about spring bulbs. If you want new or more spring colour then suppliers will have just reissued their catalogues and updated their websites with their latest stock. This enables you to place your orders, for delivery in September and October for immediate planting, ready for a fine display next year. More planning I know but think of the enjoyment to come!

If you are wanting to make significant changes to your garden ready for next year, and think a garden designer might help, now is the time to get in touch. All the best designers will already be busy and it may take several months to develop plans.

George Turnbull

enquiries@adelgardencare.co.uk
www.adelgardencare.co.uk

History Groups

Our popular talks series for over 55's has moved online.

During lockdown, instead of meeting at Kirkstall Abbey Visitors' Centre, we are posting presentations on **Kirkstall Abbey Facebook**, on a range of subjects from different speakers, at **10am fortnightly, on Fridays**. This will have the event header '**1152 Club: online**'.

Those who would not normally attend are welcome to join us too.

We hope to put these on **Leeds Museums website** for anyone who is not on Facebook.

Join us online, at **10am on Friday, 7 Aug. and on 28 Aug.** Please, if you know of anyone who may be interested, spread the word—no age restrictions.

Best wishes
Patrick Bourne

Why 1152 ?

Kirkstall Abbey was first founded by Cistercian monks in **1152**.

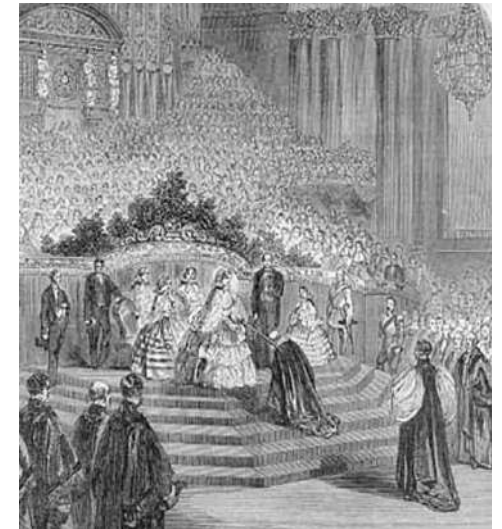
For details, speak to Val Crompton or contact:

Patrick Bourne

Kirkstall Abbey, Leeds LS5 3EH

Kirkstall.abbey@leeds.gov.uk

0113 378 4079



The visit in **1858** of Queen Victoria to open Leeds Town Hall when she knighted the Lord Mayor, **Sir Peter Fairbairn**, (who is buried in Adel Churchyard, a large flat stone, close to the NW corner seat). See video **Queen Victoria's visit** by Sarah Allen. *The Queen also visited Kirkstall Abbey.*

All videos appear about 5 minutes before 10am on the day of broadcast.

If you're not on Facebook , we are slowly adding some of these to our YouTube channel, which does not require a login – at <https://www.youtube.com/user/leedsmuseums/videos>

OPAL Activities

(Older People's Action in the Locality)

Welcome In Community Centre, 55 Bedford Drive, LS16 6DJ Tel. 261 9103
www.opal-project.org.uk
Membership £12 per year

No.6 bus stops across the road.
No.32 bus from Holt Park leaves at 10am, Noon and 3pm.

OPAL and the Welcome In Community Centre and Cafe provide Coronavirus support to anyone struggling in Leeds 16.

Since lock down started, we have delivered hundreds of food parcels, food vouchers, hygiene packs, prescriptions and baby products.
We are cooking and delivering 115 hot meals a week to older vulnerable people and providing emotional support to people who feel anxious about leaving their homes.

Getting online

We have a few iPads and Alexa devices available if people want to get online, we also have volunteers who can assist with smartphone, tablet, laptop or PC support over the telephone.

The iPads will not need an existing connection to the internet via broadband or mobile data, but the Alexa devices will need a WiFi internet connection.

If you are interested please give us a ring. Seven iPads have been loaned out and five Alexas. We still have three more iPads and one Alexa to loan, courtesy of **Leeds Libraries**.

Friday Coffee Afternoon Virtual Online Group

Join us every Friday at 2pm for this virtual group for an hour. If you have an email address & access to the internet, please contact us for the link to join. If you're not online, we can help with this too. **Open to all.**

Call or send an email to:
rowan@opal-project.org.uk

7th Aug Bingo with Catherine

14th Aug Visit Hakuna Mipaka a wildlife haven in South Africa.

21st Aug Martin & Amy from **'Health for All'** sing folk songs live. Join in too if you know the song.

28th Aug Quiz

The Centre will reopen properly in September.

The Drop In Office is closed but you can call the OPAL Office, at the Welcome In: **Open Mon-Fri** phone **261 9103**.

Ailsa Rhodes

York Gate Update

Throughout Lockdown, you may have been, as I have, walking past York Gate and witnessing the hive of activity as they got ready for their new opening. This was inevitably delayed, but at last the time came for them to open up everything they have on offer.

Trevor and I managed a visit last month and we followed the arrows around to discover and enjoy the old and the new. Do book yourself a visit. You will not be disappointed.

Jack and Mark work at York Gate and have been kind enough to share their thoughts and ideas with us.

The Editor

As with any major change in the garden we approached the transformation of Sybil's garden with trepidation. Our aim was to create a tropical oasis to bring a whole new dimension to the garden. It's fair to say that the area has been a bit Marmite for people, some have been upset by the loss of the old style of planting whilst others have embraced the new design. Although still in its infancy, the plants seem at home in their new surroundings. I hope this new jungle style room, with its own personality, will inspire many of our visitors.

Jack Ogg
(Senior Gardener)



When I joined the team at York Gate last October, it was an exciting time with the prospect of setting up our new Plant Nursery, and welcoming Friends and visitors back on 1st April. I was not expecting six months of rain, rain and more rain, followed by the heat and drought of April and May, topped off by the worries and difficulties we have all faced during these very strange times. However, we finally opened in June, bringing many of the plants we had cosseted and nurtured up to the new nursery. It has been thrilling to finally share both the garden and the plants with you; it has been great to talk and chat about the amazing range of plants we grow in the garden, which are now available in the nursery so it's possible

to take a little piece of York Gate home.

Restocking some of the plants today, I felt an unexpected mixture of happiness and sadness. Putting out the last of this year's stock of Coreopsis, I realised the plants I have cared for and watched grow for the last six months were moving on. I have spent many, many hours watering them, lance in hand with the sun beating down throughout spring. But plants belong in the ground associating with other plants to make up beds and borders, and ultimately a beautiful garden. That's how it should be and that is fine with me. Enjoy your garden.

Mark Jackson
(Nursery Manager)

It's been great to see so many of you at York Gate and we're so pleased that you are clearly enjoying the new transformation. It's lovely to have the café up and running now, although we are operating with reduced seating and a limited menu due to the current government guidelines. The café opens earlier than the garden at 10am.

We also have our rather beautiful new gift shop, which opens at 11am. You may visit either of these, together with the Plant Sales, without paying to go into the garden. Our online booking system has been successful, ensuring that we don't

have too many people going around the garden at the same time - we will continue with this for the time being. You can book directly at <https://www.eventbrite.co.uk/e/york-gate-one-of-perennials-gardens-tickets-109189869840>. Just a reminder that we are open Wednesday through to Sunday, with the garden opening at 11am.

Although the garden will close on 1st November, the café will be open all year around, apart from a break at Christmas.

We are still actively recruiting volunteers, so should you have a few spare hours that you can commit to on a regular basis, do please get in touch with Zoe Parker, our Visitor Experience and Volunteer Co-ordinator at zparker@perennial.org.uk

Sally Latchford
(Finance and Administration
Co-ordinator)



Helping people
in horticulture
Perennial

From Barry Anderson

Church Lane/ Farrar Lane/ Otley Road Junction

I have been pushing for some form of pedestrian crossing time at these crossroads. I have received the response below from the Highways Engineer:



"As you will be aware, there are no formal pedestrian facilities at this junction and we are not in a position to introduce formal facilities in its current layout, as the required 'all-red' phase on the traffic lights to allow pedestrians to cross would create significant capacity loss through the junction. This would render the improvements gained by buses from the recent Holt Lane signalisation scheme, null and void.

The junction would require remodelling which means that a number of carriageway islands would need to be introduced to allow pedestrians to partly cross a road where a lane is held by a red light, whilst other traffic movements are undertaken. Then the pedestrian would cross the remainder of the road when the original lane receives a green light and other movements are prevented. This is in contrast to having the entire junction held on a red light.

However, such an undertaking here

would be expensive as we would need to expand the junction into the grass verges, not all of which belong to the Highways department either. Such funding provision is not readily available at this point, however I am aware that the proposed development on land between Otley Road and Church Lane could provide a contribution here.

In terms of more immediate measures, I have liaised with colleagues in Urban Traffic Management Control regarding the possibility of extending the time between one set of signals turning red and the next turning green, with a view to giving pedestrians that little bit more time as required. They are reluctant to do so for each sequence, due to the capacity implications. However, they have suggested that it could be incorporated when it was required. Additional pedestrian detection infrastructure would note a pedestrian standing within the detection area and extend the inter-

green time by a specified amount to allow that pedestrian the time to cross. Of course there are funding implications, of approximately £15,000. Neither Traffic Engineering nor UTMIC have funding we could identify towards this. I have made queries about the possibility of this being developer funded, potentially from the Otley Road site if there is to be a contribution further down the line. I will pursue this, or other options that may be available including any funding that comes on stream to promote 'walking and cycling' as a result of Covid-19 and should I be able to obtain funding from anywhere, I will let you know accordingly."

An update on the land opposite the church—Planning application by David Wilson Homes

I wanted to give you more details concerning the reason why the planning application was deferred. The Panel voted to defer the application for the following reasons:

- a) A bespoke gateway type house that more reflects other older existing properties along the road
- b) Further detailing to the proposed properties and clearer detail to be shown on revised CGI's
- c) Proof that regardless of the mix of sustainability/energy efficiency methods all properties achieve the same overall standard
- d) Roofscape needs more detailing

principally by employing chimneys particularly at key focal points
e) 4-bedroom affordable homes need to be provided to ensure policy compliance.

The Adel Neighbourhood Forum are also progressing concerns over tree loss and are currently considering employing a tree specialist to try and refute the claims being made by the developer and the Planners as regards tree loss, tree value of current trees and replacement planting.

What this means in effect is that they have not received planning permission at this stage. We do need to be mindful however that David Wilson Homes do have the right to appeal this on the grounds of non-determination because of the length of time it has taken to move this application forward. This would result in an Inspector making the decision not the Plans Panel and if the Inspector agrees they would have permission.

I will let you know when the report is issued and then when it next comes to the Panel or if they appeal.

Cllr. Barry Anderson

Adel & Wharfedale Ward
Direct Dial 0113 3367742
www.barryanderson.yourcllr.com
Twitter @barryanderson19

Billy Flynn

Corvid-19

*H*ello everyone. I hope you are all keeping safe and well. At long last it looks like we are moving out of the lockdown and returning to some sort of normality. With shops and restaurants opening again in the city and holiday parks in England subject to safety measures and even foreign countries and some holiday resorts opening, things are looking much brighter. We are not completely out of the woods yet of course and it's important we all maintain our vigilance and follow health advice.

Road repairs

Talking of potholes, the council highways department have just announced their road repair programme for the next 18 months to two years. I have listed below the roads involved with some others on the periphery of Adel. Bear in mind that is just part of the planned schedule for the entire city. If there is work in your area that needs immediate action please let me know.

Holt Lane, Adel Pasture, Holt Park Crescent, Holt Park Grove, Adel Green, Adel Park Gardens, Broomfield, Farrar Lane, Glendower Park, Holt Close and Whinfield, Cookridge will also be included with some of the Moseley Woods,

Cookridge Avenue and roads off also featuring in the programme.

Adel Surgery

I wasn't going to mention the surgery this month but couldn't resist. The matter is now in the hands of the Leeds Clinical Commissioning Group and I am awaiting their views on the practice's proposal to close the Adel site. It's now getting quite urgent because if the surgery is to close as looks likely, I understand that six months notice must be given to allow patients time to decide on their future care. The lease on Adel runs out around April next year which means that notice will have to be given within the next three months. I have emphasised the urgency to the CCG. There are no plans to close our Adel Pharmacy at present but obviously that will depend on usage. The pharmacy provides an essential and valuable service to all of us as well as providing a very friendly welcome. Please support the pharmacy. Don't forget, if you don't use our local services you may lose them.

Please keep safe and well. If you would like further information on the issues above or anything else in the ward please do get in touch. Telephone 0113 2613896, 07810640282 or email billy.flynn@leeds.gov.uk.

Word Square

HARD
UREA
GEEZ
SAKE

Mini Quiz

1. Full
2. Futon
3. Fungus
4. Fusilli
5. Funfairs
6. Fugitives
7. Furloughed
8. Furthermore
9. Futurologist
10. Fundamentalists

Only 5 Clues

Across

1. MALICE
3. OTHERS
4. AU PAIR

Down

1. MIMOSA
2. ERASER

ROXTON TREE SERVICES

ALL ASPECTS OF TREE WORK UNDERTAKEN

Large and dangerous trees safely removed All work carried out to British Standard 3998

Crown lifting and general pruning

Tree Preservation Orders checked

Hedge reduction/removal

Seasoned logs for sale (free delivery)

Stump grinding

Woodchip available

Fully Qualified and Insured

FREE QUOTATIONS

tel: **0113 268 2235** mobile: **07773 298 770**

e-mail: **roxtontreeservices@gmail.com**

Advertising

The magazine is published 10 times a year and goes out to 460 homes except for June when we circulate the whole parish (2600 homes)

Full page £140 per annum

Half page £80 per annum

Quarter page £50 per annum

+ £20 for alterations

For further information contact:

Beryl Thompson
10 New Adel Gardens,
Leeds LS16 6BD



0113 267 3875
beryl890@btinternet.com



Ristorante
SORRISO

Brand New Family Run Italian Restaurant

429 Otley Rd,
Adel, LS16 6AJ
Tel: 2672671
for reservations

View our menu on line at
www.sorriso Leeds.co.uk

Opening Hours

Monday 10 am-2pm
Tues & Wed 10am-
2.30pm/5.30pm-10pm
Thurs & Friday 10am-10pm
Saturday 12pm-10.30pm
Sunday 12pm-9.30pm



Adel Wills Ltd
For Wills and Lasting Powers of Attorney

Lasting Powers of Attorney and Wills

- Friendly and Professional Advice
- Home Visits
- Local Independent Business
- Fixed Fees

Please call Jane Wintringham BA (Hons) Law, MIPW
on

07931 369813 or 0113 305 3604

email: jane@adelwills.co.uk

www.adelwills.co.uk



A member of the Institute of Professional Willwriters
This firm is compliant with the IPW Code of Practice



We are now in our seventh year and would like to thank you all for your support and remind you of our offers

**TUESDAY & WEDNESDAY SENIOR RATES
20% OFF YOUR FIRST VISIT**

£5 First Gent's appointment

**Recommend a friend and get 20% off
for you and your friend**

Come as a client and leave as a friend

**T: 0113 267 3186
E: dmandhairandbeauty@hotmail.co.uk**

**ADEL WAR MEMORIAL ASSOCIATION
Adel Sports and Social Club**



**Archery, Badminton, Bowls,
Cricket, Football, Hockey,
Lacrosse, Snooker, Squash**



and Tennis are all played at Adel

**Most sports have Junior Sections
with fully qualified coaches**

Social Membership just £12 per year

**Adel Players produce 3 plays per year
Tickets can be obtained from
boxoffice@adel-players.org.uk
or 0113 275 5585**



Rooms available for Hire

**From the main hall for weddings and special
events to smaller rooms for office
training days, children's parties,
meetings etc.**



**Lounge and bar facilities available for
Funerals and events during the day**

**For details contact Sam Jackson on
0113 293 0525 or
membership@adelclub.co.uk**

**Alternatively please check out our Web site
www.adelclub.co.uk**



**RESPONSIBLE
EQUITY RELEASE**
Responsible for your comfortable retirement

Could you release tax-free cash from your home?

More and more homeowners are releasing equity to fund their ambitions.
If you are interested in local, no-obligation advice, then contact:

Paul Murphy
Yorkshire's Trusted Equity
Release Specialist



“Paul made all the necessary arrangements...

...and gave us advice and guidance at every stage of the process, always on hand to answer our queries no matter how trivial.” - Ian and Mandy Stewart, 2019



★ Trustpilot

Call Paul today, on: **07816 061170**
or visit him at: responsible.org.uk/paulmurphy

This is a Lifetime Mortgage which may reduce the value of your estate and may affect your entitlement to means-tested state benefits. To understand the features and risks ask for a personalised illustration. Responsible Equity Release is a trading style of Responsible Life Limited. Only if the case completes will Responsible Life Limited charge an advice fee, currently not exceeding £1,490.

Crag House
— FARM —

MAKING A SAFE PLACE FOR YOU TO VISIT!



The farm shop
is open for your essential supplies of veg, meats, milk, cheeses, pies, ready meals and much more.

We are also running a call and collect service for our shop products, Simply go online to see selection and then call us to place your order.

THE FARM SHOP IS OPEN - MON TO SAT FROM 9AM - 4PM

The Garden Nursery

We have a great selection of bedding plants, compost, vegetable plants, tools and pots. these are now available to order online. Unfortunately we are only delivering to the local area. (deliveries only, the sales area is CLOSED)

For more information and to order, please go the Nursery page online at www.craghousefarm.com



Crag House
— FARM —

Crag House Farm - the home of Caring For Life • (0113) 230 3618
Otley Old Road, Cookridge, Leeds LS16 7NH • www.craghousefarm.com



Companies and organisations supporting child safety, friendship and moral and ethical principles through The Cones series of books include:

BAM Nuttall
Bradford College
Caddick Construction
Drax Power Group
Enjoy Digital
Environment Agency
ENGIE
Eurovia
Grand Central Rail
Jaguar Cars
Leeds Childrens Hospital
Leeds City Council
Leeds Trinity University
Northern Powergrid
NSPCC
Oakland Construction
Q Parks
Ringway
Town Centre Securities
Traffic Management Services

Note: Trademarks may apply



6 Floors of Beds & Bedroom Furniture **Bedside Manor**

108 – 112 Burley Road Leeds LS3 1JP
 (Behind Yorkshire Television)

0113 24 25 600

Email: BSM6floors@aol.com

See us on Facebook

Our family business has been supplying quality beds and bedroom furniture to discerning customers for over 15 years.

We know just how important it is for you to make the right choice for sleeping comfort and to suit your lifestyle.

Our personal service assures you of the best advice to help you select from our wide ranges of mattresses, divan beds, bedframes and bedroom furniture.

Bespoke options are also available so you can achieve the look to complement your bedroom

Come along and see us: We're open 7 days.

Bring this with you and receive an extra 10% off*

*Excludes Sale Items



Do you need someone to mow your lawn?

Call Michael.

I'm neat, reliable and standing by
 to mow your lawn and neatly trim
 your edges!

I also offer a path and driveway pressure-washing service to brighten up your garden. Call me: **07824 312899**
 (Please leave a message if I don't answer – I may be out gardening !)

Email me: thompsonandkelly@gmail.com

Rate: £15 per hour

(Minimum charge £8)

Evening
Wedding
Receptions



Headingley
Golf Club

Birthday
Parties

Thinking of having a party
or a special function?
Why not try Headingley Golf Club
(behind Adel Church)?

We can accommodate up to 130 people.
We cater from a simple Buffet to an
à la Carte menu.
Packages tailored to your requirements.

Fully licensed bar with spectacular views over the
Golf Course.

Either pop in for a chat with
Andrew or Tracey or give us a
call on the number below.

Anniversaries

Funeral
Wakes

Headingley Golf Club
Back Church Lane, Adel, Leeds LS16 8DW
Tel: 0113 267 9571 Option 3

LAWRENCE GAUNT
OPTICIANS

Ireland Wood Surgery
Iveson Approach, Leeds, LS16 6FR

Professional
Comprehensive Eyecare
Family Opticians since 1978
Personal Service
Friendly Independent Advice

0113 267 9547

www.lawrencegauntopticians.co.uk
professional eye care with a smile

Full wheelchair access
Free on-site parking
Home visits available

Ribbons
INTERIORS

curtains...blinds...soft furnishings...upholstery

10 The Crescent, Adel, LS16 6AA
tel: (0113) 3457424
www.ribboninteriors.co.uk

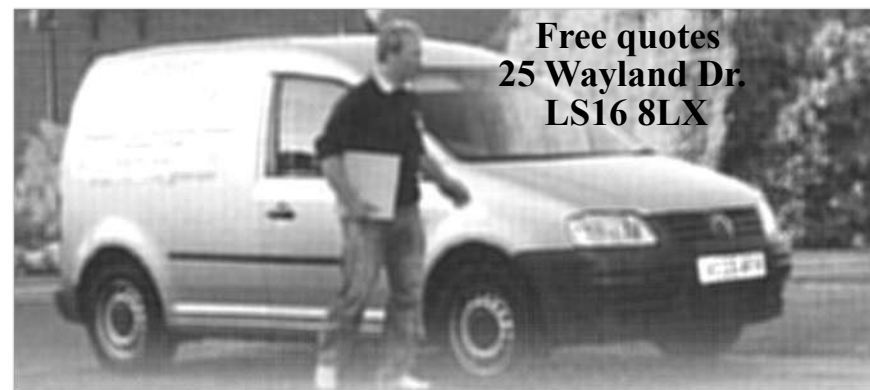
affordable, aspirational interior design
based in Adel, from individual pieces to
full room makeover

now stocking paint from Hicks & Weatherburn



RIBBONS INTERIORS

design...make...source...fit



ADEL TILING SOLUTIONS

Brian Hurst has over 20 years experience in tiling. If you are looking
for an experienced local tiler to get the job right, first time, call

0113 368 9769 or **07712 896711**, email: brian_hurst_msn.com

No job too big or too small. Cleaning & re-grouting/ silicone removal,
ceramic floor & wall tiling inc. mosaic & stone products.

ADEL GARDEN CARE

Is your garden in need of some extra care?



We are experienced in all aspects of plant care including border maintenance, weeding, pruning, training climbers, wildlife gardens, renovating shrubs.

We install fencing & decking, jetwash patios, revitalise ponds.

**Contact us for a free estimate:
07815 206610**

www.adelgardencare.co.uk

enquiries@adelgardencare.co.uk

SLATER'S FUNERAL SERVICE

**Genuine Independent Family Business
Established 1884**

**135 years caring for the deceased and
bereaved families, offering a personal,
caring and dignified
24 hour service covering all areas**

**Oakford House, 291 Low Lane, Horsforth,
LS18 5NU**

Tel 0113 258 2395

www.slatersofhorsforth.co.uk



LOCAL PROFESSIONAL LOCKSMITH

24 HOUR CALLOUT WITH NO CALL OUT CHARGE

10% DISCOUNT FOR OAP's AND STUDENTS

New Locks Fitted - Changed - Replaced Burglary Repairs & Boarding Up

Snapped Keys in Locks - Fixed Defective Locks Repaired Replaced

Locked Out? Rapid Response – 20 MINUTES

UPVC Window & Door Specialists

All Types of Locks & Keys Supplied British Standard Locks Fitted

TEL:07947160788

Matthew Holmes

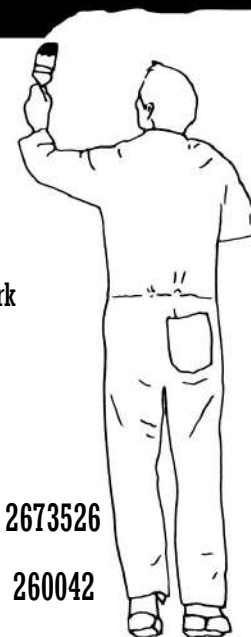
*Domestic and Commercial
Painter and Decorator*

High quality work
Clean, reliable, friendly
Over 26 years experience

Interior & exterior work
Paper hanging
Coving

4 New Adel Avenue,
Adel, Leeds, LS16 6BE
Email: mholmesdecorating@live.co.uk

Home: 0113 2673526
Mobile: 07725 260042



Your Hearing is Priceless

Providing you with a quality hearing healthcare service...

Our award winning Audiologists have many years of experience working in the NHS and private sector. They are HCPC Registered and members of the British Society of Hearing Aid Audiologists (BSHAA). Our clinical lead is an experienced ENT doctor who works closely with the world's leading hearing aid manufacturers, allowing him to gain an extensive knowledge of the latest developments in hearing aid technology. We are passionate about audiology and will continue to deliver the personal and caring service that you deserve.

HOW WE CAN HELP YOU TODAY

Complimentary hearing consultation
FREE trial of the latest hearing aids
Specialist Tinnitus therapies
Wax removal service
Custom ear plugs

Introductory Offer
20% off all hearing aids.
Call now.

Contact us to see how Resonance Audiology Services and the latest discreet digital hearing technology can improve your quality of life!



Hear family, friends & loved ones
Listen to the TV comfortably
Hear better on the telephone
Communicate better at work & socially

If you're concerned about your hearing, a visit to us is an easy, comfortable way to understand more about hearing loss and learn more about solutions that fit you and your budget.



Call: 0113 418 2548 for a free hearing test and advice

"Where sound ingenuity meets life's little details."

Suite 4, McCarthy's Business Centre
Meamwood Road
Leeds, LS7 2AH
www.resonanceaudiologyservices.co.uk

Local health and fitness club



Offering a friendly gymnasium, fitness studio, leisure pool, spa pool, steam and sauna rooms

Come along for a free trial
Or for more information on membership call
0113 2699010
Hannah.bullock.020@jupiterhotel.co.uk



Feel Good Health Club
Mercure Leeds Parkway
Otley Road
Bramhope, Leeds LS16 8AG



Arthur Clemens

PAINTER AND DECORATOR

43 LONG MEADOWS, BRAMHOPE, LEEDS, LS16 9DU

High Class Interior & Exterior
work undertaken

For Free Estimates call
0113 267 6485
Mobile 0788 7681793

Adel Pharmacy

141 Long Causeway
Adel Leeds

◆ Enquiries, please phone 0113 230 0351

◆ Excellent parking

◆ Collections & delivery of prescriptions where necessary,
free of charge week days only

Monday	8.15-12.30 14.00- 18.00	Thursday	8.15-12.30 14.00-17.00
Tuesday	8.15-12.30 14.00-17.30	Friday	8.15-12.30 14.00-18.00
Wednesday	8.30-12.30	Saturday and Sunday	CLOSED

Aerial Solutions

A Family run Leeds business with 20 years experience

All work guaranteed
Debit & Credit card payments welcome
7 Day Service
Extra TV/Sky points from £40
Dish & Freesat Installations
CCTV Installations
OAP Discount
Ring 0113 8199057
FREE 0800 328 7517
*on all supplied & installed equipment



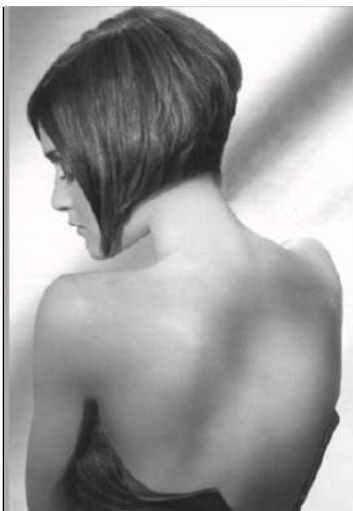
**D. P. A. FLETCHER
(BUILDERS) LTD**

**All aspects of Building, Joinery
& Property Repairs**

(with over 30 years of experience)

Tel: 0113 263 0515

jackie.dpafletcherbuilders@gmail.com



Padd Hair Studio

6 The Crescent
Adel
Leeds LS16 6AA

Opening Hours
Tues 9am—3pm
Wed 9am—4pm
Thurs 9am—7pm
Fri 9am—4pm
Sat 8am - 2pm

Tel 0113 267 4388

We are a well-established friendly salon run by Andrea Petrou for over 12 years. We are tucked away on a little parade of shops on The Crescent behind the Co-op on Otley Road.

There are four stylists, two assistants and a junior. Our clients are **men, women, teenagers and children**. We have entire families who have over the years become friends and we have enjoyed watching the younger members growing up.

**SPECIAL INTRODUCTORY OFFER FOR
ALL NEW CUSTOMERS**

**Offer available through the week
Cut & Style for just £19.00**

QUOTE ADEL BELLS TO CLAIM YOUR VOUCHER

Find us on Facebook



R. Pearson
Electrical and Plumbing

R Pearson Electrical and Plumbing
All aspects of Electrical and Plumbing work undertaken

Consumer unit upgrades/ periodic testing
Internal and External Electrics and Lighting
Electric and Gas Cooker/Hob Supply and Installation
CCTV Security Systems and Intruder Alarms
Flat Screen TV and AV Installation
Fault finding and rectification
Gas Safe Repairs
Boilers and Boiler Services
Leaking Taps
Radiator Changes
Bathrooms
Outdoor Taps



Free Quotations
Tel: 07796000600

enquiries@rpearsonelectricalandplumbing.co.uk
www.rpearsonelectricalandplumbing.co.uk



J. E. SPENCE

FUNERAL SERVICE

Part of Dignity Ltd – A British Company



The Lawnswood Funeral Home
Otley Road, Adel, Leeds LS16 8AA

Pre-paid funeral plans
Monumental Masonry
Floristry Service
Tel: **0113 268 2842** for personal attention

John Collins
Gas And Plumbing
City & Guilds Qualified
Fully Insured



All Gas & Plumbing work
undertaken, including :

- *Gas appliance installation
and servicing
- *Installation of bathroom suites
- *Full central heating systems

Mobile 07917 356425
Home 0113 2121494

31 Shadwell Walk,
Leeds LS17 6EQ



Jane Hair

**Friendly Salon with
competitive prices and
personal service**

Colours, Dry Cut, Perms,
Sets, Cut & Blow Dry
find me at
No. 8 Cottage Road
Headingley

Tel: 0113 2249158
Mobile: 07982129139



**Proud to be
supporting our
local community**



**FOOT HEALTH
PROFESSIONAL &
CLINICAL REFLEXOLOGIST**
**CARING FOR YOUR FEET IN
YOUR OWN HOME**

General foot care, corns, Callus,
Fungal nail, diabetic foot checks

Contact
YVONNE TROTTER MAFHP, MCFHP
07841140333
yvonnnetrotter@yahoo.co.uk



**DISCOVER
BEAUTIFUL
GALLOWAY!**

Spacious 3 bedroom bungalow for holiday
let sleeps 6 +1 + cot

Direct access to safe, sandy beach at
Sandgreen

Ideal for swimming, water sports and
rock-pooling!
Large private garden Family friendly

Forest Park, Conservation Zoo, Loch Ken,
Open Farms and numerous castles only a
short drive away.
South West Scotland – 4 miles from
Gatehouse-of-Fleet

Email or call
brackenriginfo@btinternet.com
Mob: 07812164522

www.holidaycottagegalloway.co.uk



Specialist Neurophysiotherapy
For people of all ages

Stroke, Brain & Spinal Injury
Multiple Sclerosis
Parkinson's
Mobility & Balance problems
Vestibular rehabilitation
Developmental Co-ordination Disorder
Cerebral Palsy

Free initial telephone consultation
Home visits available

Leeds Neurophysiotherapy practice
6 Over Lane, Rawdon, Leeds LS19 6DY
Tel: 0113 2508833

Email: practice@leedsneurophysiotherapy.co.uk
Website: www.leedsneurophysiotherapy.co.uk

APplastering



Fully qualified plasterer
over 30 years experience
Fully insured
All plastering work undertaken
Internal and external
No job too small from
patching to full house
For a competitive quote
call Andy on 07814705238

MONE BROS



Trade and DIY Welcome

Our family business
supplies a wide
range of garden and
landscaping materials
from our quarry in
Bramhope, Leeds



Topsoil, sand, gravel, slate and many
types of stone. Available loose or in bags.
Collect or delivery.

Blackhill Quarry
Kings Road, Bramhope, Leeds LS16 8BG
T: 0113 267 4386
Open: Mon-Fri: 7am-5pm, Sat: 7am-1pm

www.MONEBROSdiy.co.uk

Build a brighter future for your child



**Kip McGrath's qualified teachers
create individual tutoring programmes,
using proven Kip McGrath methods.**

☒ **Maths** ☒ **Reading**
☒ **English** ☒ **Spelling**
☒ **Comprehension**

**Call today
for a FREE
assessment**

Bill Moody
07815 760 509
485 Otley Road
Adel, Leeds LS16 7NR

**Kip
McGrath**
EDUCATIONCENTRES

leedsadel@kip-mcgrath.com



North Leeds Physiotherapy and Sports Injuries Centre

Sarah Beldon MCSP HCPC
3 Kingsley Road, Adel,
Leeds LS16 7NZ

Ring 0113 285 7378 or 07908151241
Daytime and evenings available

APPI Physiotherapy led modified
Pilates Classes in Adel Stables
—days or evenings



Female painter and
decorator
20 years' experience.
Professional and reliable
Tel: 07398 882 306 or
Email
harperddiy@gmail.com



Blueberry Automation

are local, family
run, with over 20 years experience in home
automation.

Roller garage door specialists including
awnings and all external motorisation.

Now recognised as Yorkshire's leading
Somfy expert, TaHoma/Connexoon
commissioning available.
Internal motorisation now extending in to;
blinds, curtains, lights, heating, alarms,
cameras and beyond!

Contact
Email: blueberryautomate@gmail.com
Phone: 07479 662021
web: <http://blueberryautomation.co.uk>



**Do you need someone to
clean and tidy your house?**

Call Catherine.
I take pride in doing a good job
and I'm hardworking and reliable!

I also offer light gardening assistance too!
Call me on 07952 301917
(Please leave a message if I don't answer –
I may be out cleaning!)

Email me: csk1906@gmail.com

Rate: £15 per hour (using your cleaning products) or
£16 per hour (using my own). (Minimum charge £8)

You've only got two feet



Why not let me take care of them

Nick Simpson BSc (Hons)
HCPC Registered
Podiatry Chiropodist
Home visits in Adel and
surrounding areas
Tel: 07751 078787
Email nickynu@hotmail.co.uk

Advertising

The magazine is published 10 times a year
and goes out to 460 homes except for
June when we circulate the whole parish
(2600 homes)

Full page £140 per annum

Half page £80 per annum

Quarter page £50 per annum

+ £20 for alterations

For further information contact:

Beryl Thompson
10 New Adel Gardens,
Leeds LS16 6BD



0113 267 3875
beryl890@btinternet.com

Index of Advertisers

Aerials & Satellites		Hair and Beauty	
46	Aerial Solutions	33	Hair by Dmand
Beds		47	Padd Hair Studio
38	Bedside Manor	50	Jane
Builders/Joiners		Health Care	
46	DPA Fletcher Ltd	43	Hearing
51	APplastering	44	Mercure Health Club
Building Supplies		50	Foot Health
51	Mone Bros.	51	Leeds Neurophysiotherapy
Cleaners		53	North Leeds Physiotherapy
54	Catherine	54	N. Simpson, Chiropodist
Education		Holiday Home Rental	
52	Kip McGrath	50	L Gibson
Electrical & Plumbing		Interior Design	
48	Pearson	40	Ribbons
Equity Release		53	Blueberry Automation
35	Paul Murphy	Leisure Interests	
Estate Agents		34	Adel War Memorial Association
49	Manning Stainton	37	Meet the Cones
Food Outlets		39	Headingley Golf Club
32	Sorrison	Locksmith	
36	Granary Restaurant	42	The Lockdoc
Funeral Directors		Opticians	
41	Slater's	40	Lawrence Gaunt
49	J E Spence Ltd	Painters & Decorators	
Gardening Services		42	Matthew Holmes
31	Roxton Tree Services	45	Arthur Clemens
38	Michael, lawn cutting	53	Harperddiy
41	Adel Garden Care	Pharmacies	
Gas and Heating		45	Adel Pharmacy
50	John Collins	Tiling	
		40	Adel Tiling Solutions Ltd
		Wills	
		32	Jane Wintringham

Church Services



August

Sunday 2nd		Eighth Sunday after Trinity	
	10am	Parish Communion with Junior Church	
Weds 5th	7pm	Compline/Evening Prayer	
Sunday 9th		Ninth Sunday after Trinity	
	10am	Parish Communion with Junior Church	
Weds 12th	7pm	Compline/Evening Prayer	
Sunday 16th		Tenth Sunday after Trinity	
	10am	All Age Service with Communion	
Weds 19th	7pm	Compline/Evening Prayer	
Sunday 23rd		Eleventh Sunday after Trinity	
	10am	All Age Service with Communion	
Weds 26th	7pm	Compline/Evening Prayer	
Sunday 30th		Twelfth Sunday after Trinity	
	10am	Parish Communion with Junior Church	

Distancing will be needed for some time yet, so the above services will all be on-line, although the Rector is in church for some parts of the service.

Throughout August the church will be open for private prayer each day but not always at the same time. Please see page 7 for details.