



December/January

2021/2022

Rector Revd Alison Battye 25 Church Lane Adel LS16 8DQ
alison.battye@leeds.anglican.org 267 3676

Churchwardens Lucy Best-Shaw 73 Otley Old Road LS16 6HG 217 2963
lucybestshaw@yahoo.co.uk

Alison Howarth Apt1, Garmont Court LS7 3RU 262 4622
ahowarth@hotmail.com

PCC Secretary Andy Neal 468 Otley Road, LS16 8AE 07415 424 964
adelpccsecretary@gmail.com

PCC Treasurer Bob Holloway 10 Adel Pasture LS16 8HU 267 9360
bob@hollowayassociates.co.uk

Planned Giving Helen Hallett 217 8845

Choirmaster

Music Group Leader Chris Cunliffe 267 6767

Funeral Verger Iain F. Welsh 267 9364

Assistant Funeral Verger Lucy Best-Shaw 217 2963

Flower Rota Lucinda Lillford 07795685870
(evenings only)

Weddings Verger Sue Smith 261 0349

Assistant Verger /Librarian Val Crompton 225 9142

email: vjcrompton@ntlworld.com

Adel St John School Head Teacher Mr Peter Dalrymple 261 1804

Parish Hall Bookings

Weekend Bookings Loveday Loveridge 07974 321466

Regular Bookings and

Adel Bells Editor Marjorie Cole 261 0069

Magazine Advertising Beryl Thompson 267 3875

beryl890@btinternet.com 10 New Adel Gardens LS16 6BD

Distribution: Jenny Jones 225 7123

Website: Trevor Cole 261 0069

Adel Bells adelbellscm@gmail.com

(Please email copy by 10th of the month)

Parish Hall Bookings

Weekend Bookings adelweekendbooking@gmail.com

Regular and Weekday Bookings adeloldstables@gmail.com

Church Website www.adelparishchurch.org.uk

Follow us on Facebook or Twitter Adel Parish Church



The Parish Church of St John the Baptist, Adel
 Enquiries including Home Communion, Baptisms, Confirmation,
 Weddings, Funerals; please look at the church website
www.adelparishchurch.org.uk

Contents

Our Church

Rector Alison's Letter	6
Christmas Experience	8
Charity Donations	10
Penny's Ponders	11
A Story of Faith	12
A Churchyard through Time	13
Lay Ministry	14
In Brief	15

For your Interest

A Prayer can be a Gift	16
Nature Notes	17
QE Corner	18
Joyce Hill	19
Poetry Corner	22
In Your Garden	23
History Groups	24
OPAL	25
A Christmas Recipe	26
York Gate Update	27
Billy Flynn	28
Barry Anderson	29
Play Review	30
Next Production	31

Regular Items

Puzzles	20
Children's Page	21
Solutions	32
List of Advertisers	58



Adel PCC Members 2020–2021

Paul Barker, Lucy Best-Shaw,
 Bruce Buchan, Marisa Clayton,
 Marjorie Cole, Tina Gledhill,
 Helen Hallett, James Harrison,
 Bob Holloway, Alison Howarth,
 Sarah Johnson,
 Jenny Jones, Mary Larner,
 Loveday Loveridge,
 Andrew Neal, Mark Seaward,
 Sue Smith, Carole Smithies,
 Lesley Walton

Magazine Editors

Marjorie Cole
 Chris Madeley

Illustrators

Val Crompton
 Marjorie Cole

Church Open for Visitors
 Mondays and Saturdays 1.45 to 3.45

Parish Registers Baptisms

31st October
 Thang Tang

Wedding

9th October
 Mark Joshua Devis and Rachel
 Louise Mei-Wan Devis

Burial of Ashes

1st November
 George Mc Connell and Winifred
 Joan McConnell



Festivals & Feasts

25th December

Christmas Day

26th December

Stephen, deacon, first martyr

27th December

John, Apostle and Evangelist

28th December

The Holy Innocents

1st January

Naming and Circumcision of Jesus

6th January

Epiphany

9th January

Baptism of Christ

25th January

Conversion of Paul

Holy Jesus,
 by being born one of us,
 and lying humbly in a manger,
 you show how much God loves
 the world.
 Let the light of your love always
 shine in our hearts,
 until we reach our home in
 heaven,
 and see you on your throne of
 glory.
Amen.

Lord Jesus Christ,
 your birth at Bethlehem
 draws us to kneel in wonder at
 heaven touching earth:
 accept our heartfelt praise
 as we worship you,
 our Saviour and our eternal God.
Amen.





**We aim through Christian worship, word
and action to celebrate and share the love of
God with our neighbours**

From the Editor

I would like to wish you all a very happy Christmas with the hope that I might see you at one of the services we have planned. We have every reason to hope that Christmas will be different this year with plenty of opportunity to meet up with friends and family. We at Adel Church are certainly encouraging you to do so. Please see details of our events overleaf. Your family might even appreciate sampling the Mincemeat Streusel, should you decide to try out the recipe on page 26.

If you have been reading Adel Bells for many years, you might know that we used to have a "What's On" page, nothing to do with church events. Local clubs and societies advertised which events they were putting on each month. When the pandemic arrived, these activities could no longer take place, so the page disappeared. I suspect many of these groups are running again. If you feel the information contained was useful, please let me know. We could reinstate it if there is a need, but someone would have to give me the

information; if you are a member of such a group, could you enquire as to how that information might be passed on to me?

I received a surprise email from Revd Stuart Bamforth's daughter Ruth and it contained information you might be interested in. She has been very busy sorting through her father's sermons and putting them into some meaningful order. The book is now published and you can read about it on page 12.

I have to admit here that I love to send and receive Christmas cards. There is an idea that appeals to me on page 16. Normally, I transform my Christmas cards into gift tags after the event, but before I do that I intend to keep them intact and gradually work my way through them, in the manner suggested in this article.

100 Club Draw October

James Bullos	£77
Judy Morris	£30.80
Eric Wells	£30.80

An apology for a mistake made last month. The first prize went to Jamie Farquharson-Welsh, not Kathleen!

Marjorie Cole

Rector Alison's Letter

Christmas is just the beginning

Dear friends,

At the beginning of November, we had a wonderful service of Confirmation in Adel church. Confirmation is when we 'confirm' the faith promises made at baptism, often made on our behalf by godparents.

People choose to be confirmed because they have found in the Christian faith something that helps make sense of their lives. Five adults from our church congregation were confirmed by Bishop Colin Buchanan on what was a very joyful occasion. The reading for the day was from the beginning of Mark's gospel, where Jesus first calls the disciples. In his sermon Bishop Colin pointed out that Mark's gospel doesn't contain the story of Jesus' birth – the Christmas story – but starts with the adult Jesus calling people away from their old lives to follow him.

He said it was a good reminder, especially at this time of year, that there is so much more to our faith than Christmas. Christmas is a vital part of the Christian journey. It tells us of a love so great it led to God becoming man and sharing the precariousness of human birth and childhood. It tells us of God who chose a humble family and an ordinary

life so that through it he could show his care for the poor and the outcast. Christmas is the starting point of the Christian story, so it is right that we stand before the crib in amazement at God's love. But as the Bishop reminded us, it was not the baby Jesus who taught and healed and showed us how to love one another. Christmas is an important part of our story – but only if it leads to a relationship with the adult Jesus.

We loved putting on our 'walking nativity' last year – but it was rather cold, wet and windy for those shepherds and other characters! So we are pleased to be able to offer something a little more traditional this year. Our 3pm crib service will be in church as usual – but with limited numbers. Our 5pm service will be outside – where a crib, carols and candle light will help us share the special story. We are also delighted to be able to offer our traditional carol service, midnight mass and Christmas morning services.

We do hope you will join us for one or more of these occasions; sharing the wonder of Mary and Joseph, and the joy of the shepherds. We hope you will come and gaze in awe at the Christ child – God's love in human form. And we also invite you to stick with the story – and get to know Jesus as he grows and reveals more of God's love.

Anyone is welcome to any of our services. We are a friendly group of people on a journey of following Jesus. We would love you to join us. With love and prayers

Alison

A few gentle reminders:-

Advent discussion course

Week 1 Advent Waiting – making space for what might come
Week 2 Advent Expectancy – being ready to be surprised
Week 3 Advent Silence – God comes softly
An informal group – no prior knowledge needed – just come along and explore together.

Starting Monday 29th November

7.30pm on Zoom
Advent discussions over a three week period.

Starting Tuesday 30th November

1.45pm in the Stables
Advent discussions over a three week period.

Please ask Alison if you would like any more information about the above.

Adel Advent Angels

Put an angel in a window of your house which can be seen from the road (in the way so many of you had rainbows of hope last year). It can be any design – but underneath put the word 'Waiting'. Then walk around Adel and see how many you can spot!

Booking information

When booking is needed, it can be done by contacting Eventbrite.

The Crib Service on Christmas Eve needs to be booked for, but at the time of going to press, the link is not yet available. Please consult the church website nearer the time.

Live-streaming of services

As you may be aware, we aim to live-stream our 10am services every Sunday on our YouTube channel. If you are not able to watch them live, they are still available to watch at your leisure.

Over the Christmas period we hope to live-stream some of the extra services; these are marked with * on page 8.

To access the YouTube channel you can follow links on the website, search for Adel Parish Church on YouTube or type into your browser

www.tinyurl.com/adeltube

Please note that if you wish to watch the services at your leisure, they may take a few hours before they appear on the channel.



Saturday 4th December

10.30am to 12 noon Coffee Morning, in the Old Stables. Christmas cards on sale.

Sunday 5th December

3pm Concert in church by the Leeds Guild of Singers
No need to book, pay on door.

Sunday 19th December

10am Parish Communion (Sung)*
6.30pm Community Carol Service*

Friday 24th December

3pm Crib Service in church with Readings and Carols, booking needed (see page 7)
5pm Outside Crib Service with Carols by Candlelight (Bring a chair if you wish and your own candle in a jam jar lantern)
11.30pm Midnight Mass in church*

Saturday 25th December

8.30am Holy Communion (Said Prayer Book)
10am Parish Communion (Sung)*

*** We hope to live-stream these services, please see page 7**

18th December to 1st January

You are invited to come to the churchyard and see the crib, take part in the treasure hunt and say a prayer at one of our Christmas benches.



Christmas Coffee Morning

**Saturday 4th December
10.30 to 12 noon**

in the Old Stables

Home-made cakes
Biscuits
Mince pies

Christmas cards to buy
Last chance to take part in the
Christmas cake raffle!

Christmas Concert

**Sunday 5th December
3pm**
in church

SOIR DE NEIGE

by

The Leeds Guild of Singers

Director: Benjamin Kirk

Please pay at the door. More
information may be found by
looking at the church website
adelparishchurch.org.uk



Please support our advertisers and mention Adel Bells

Charity Donations

Charity is defined as the voluntary giving of help; most people associate this giving of help with donating money. Adel Church donates set amounts every year mostly to small, local charities –who are doing great things in our community. Small charities highlight issues that matter locally and more often than not, work directly to solve a problem in your community – which is not only much closer to home, but also can be much closer to your heart. The PCC votes on which charities will receive donations and the details are written below.

Beneficiaries (£200 each charity)

St Anne's Community Services

USPG- United Society Partners in the Gospel

Progress to Change (previously West Yorkshire & the Dales Council for Social Concern)

Wheatfield's Hospice

Christians Against Poverty

St Gemma's Hospice

Martin House Hospice for Children and Young People

Emmaus Leeds

The Governors of Adel St John the Baptist (Aided) Primary School

Caring for Life

St George's Crypt

Kids in Kampz

Children's Society - Half of the Crib Services collection. The other half to our church funds.

Penny's Ponders

Hi Everyone!

I hope you've all enjoyed some of the lovely days we have had during Autumn. I've had some lovely walks in the sunshine. One morning, approaching Bedquits, (one of my favourites!) I saw a lovely, tiny, cream-coloured puppy playing in the leaves on the pathway. She was so funny, barking at her Mum to kick them up for her! I wasn't cross with her when she jumped up, firstly at my Mum and then up at me. (I growl at dogs who jump up in my face and can get really angry!) She reminded me of myself when I was little, particularly when I heard her Mum tell mine that her other favourites were squirrels and chasing flying ducks! Oh my, those were the days when I thought Poodles could fly! I'm sure the ducks were teasing me. They flew just a bit too high and they were also faster than I was, but I'd never admit to that when I was young.

I have just committed a very serious misdemeanour and am not sure if I will every be forgiven. My Mum buys these little gold bags of chocolate coins every Christmas for our children; I've never been allowed chocolate. I decided to do a bit of finding out, so I made a mental note of where she hid them. Being bored one evening, I went hunting and could just reach them by standing up on my back legs.

I must say, I don't like that gold foil stuff round the chocolates, it's very chewy and hard to swallow, but the chocolate was very nice, but I don't think I'll ever get to taste it again. Actually, I would go so far as to say I will never eat that gold stuff again – let's just say, it didn't agree with me!

I know we celebrate Christmas at this time of year every year, but really it is only the start of a year-long story with different parts being remembered or celebrated as the year progresses. These events make us think of different times in the life of Jesus and the Church. The Bible doesn't tell us the exact date or time of his birth, but that really doesn't matter. What matters is, that it *did* happen, Jesus was born, grew up and gave the world a whole new way of living: loving our neighbour, loving God, following His teachings, sharing our faith with others and looking forward to His Kingdom on earth and many other things.

Thinking about it, every one of our years is part of the story and the journey. Jesus, the Christ, is the centre of the story, and not just as we celebrate His birth at Christmas time. Christ is for ever. I hope you have a lovely time.

Woofs & licks,
Penny

A Story of Faith

I am sure many of you will remember with fondness Revd Stuart Bamforth. His daughter Ruth contacted me to tell me about the book she has written. You may be interested in buying it.

Revd Stuart Bamforth was a curate at Adel Church in the 1960s under Canon Philip Simpson. After leaving Adel he had parishes in Norfolk and then later came back to Adel to teach at Ralph Thoresby High School - his ordination selection board had suggested he did not spend the whole of his ministry in parish life. When back in Adel Stuart took many services at Adel Church until his retirement to East Yorkshire in 2000. Ruth's book, *Don't fuss, Love God, Don't fuss* is based on a selection of Stuart's sermons. Ruth writes the following about her Dad and the book:

"At his death Dad had been an Anglican priest for more than 52 years. He had been active in his ministry from the time of his ordination until his final illness. To this day Dad is fondly remembered by many of those whose paths he crossed, not only as a man and a priest but also for his ability to communicate clearly and memorably the Christian message.

I have put together *Don't fuss, Love God, Don't fuss* from a selection of Dad's



sermons, which I have compiled and edited into a series of thought pieces which consider questions including: What is a Christian? What is prayer? How should I pray? What does the Lord's Prayer actually mean? These are just some of the questions people often ask as they explore their Christian faith. *Don't fuss, Love God, Don't fuss* seeks to answer these and other questions in a straightforward, down to earth, and unapologetic way as well as pose questions of the reader for individual or group reflection. I have also included a short biography of my Dad to show how he practised what he preached. I would like to think that something of my Dad's personality is revealed through the thought pieces.

As the Bishop of Selby comments in his foreword, "These [thought pieces] are theology on the go, ... thoughts about the ways of God with us and with the world as part of that unfolding story of faith in ordinary life consequent upon the impact of Jesus Christ over 2,000 years ago.... I hope that you enjoy and are challenged by *Don't fuss, Love God, Don't fuss*."

The book is available from Ruth (ruth.bamforth@btinternet.com) as well as from Waterstones and Amazon and other online booksellers."

A Churchyard through Time Part 2

Stories from Adel Churchyard can be found on the family gravestones.



The upright sandstone gravestones of the **Hainsworth family**, who lived for generations at **Adel Mill**, are easy to spot in the south section of Adel Churchyard. They have a distinctive pointed top. The descendants of **Samuel Hainsworth** are now scattered round the world.

Adel Bells can be read on-line - and I recently received an email from **Stephen Hainsworth** in **New Zealand**. Don Cole and I met up with Stephen, in Adel Churchyard, many years ago, when he was visiting the Hainsworth family graves.

Extract from Stephen Hainsworth's email:

*'I have just been reading online some of the recent Adel Bells and see that you and Marjorie have been keeping up the good work. Don Cole must be of a good age by now. It is good to see he is busy at his history still. I would be interested to know the names and availability etc of his current titles to complete my collection. The Bells magazine reflects all is well in Adel!
Kind Regards to you and Don'*

Stephen Hainsworth

I have emailed Stephen a copy of Cookridge Methodist Autumn Link-Up which gives details of Don Cole's '**A Teenager's War**' price £5.50. It records Don's experiences during WW2.



Val Crompton

Lay Ministry

When God comes calling....

One of the essential characteristics of God is that he calls. Throughout the Bible, time and time again we find God calling out to people, drawing them onwards into the life that he yearns for them to have.

If, like many, you imagine God's call to be a moment in time when a blinding vision changes your whole way of living, as Paul encountered on the road to Damascus, then you are likely to be disappointed. Calling can take many different guises. For some it will involve being called to a complete change of life. As Abraham was called to leave everything behind and to journey to a destination as yet undisclosed. In the same way, Jesus' first disciples were called to leave everything behind and to 'follow him'. For others the call is to complete a task, like Jonah being asked to preach repentance to the people of Nineveh. It is certain that God calls us in ways that transform our whole lives and will demand that we will never be the same again, but God also calls us to tasks (both great and small), which might disrupt what we are doing already, but ultimately will fit into it.

So where does that place those like myself who are called to Lay Ministry? Some insist that there must be a very real, personal sense of being called to

undertake the role. Others are more interested in whether someone has the 'skill' or ability to complete the three years of training and 'to do the job'.

My personal experience is that you need to have both the depth of conviction that God is calling you to ministry and you also need the skills to carry out the role effectively. The training is intense, with many hours of reading each week, assignments to complete and sermons to write. Many of those undergoing training with me, do so on top of full-time work and busy family lives. All are involved in leading some aspect of church life already. The old adage 'if you want a job doing - ask a busy person' certainly applies.

We are all different. We represent the many aspects of the church of England, 'high church', 'low church' and 'everything in between church'. But what we all have in common, is a love of God and a desire to serve.

Whichever way God's call to Reader Ministry comes, the compelling result is the same! You feel an insistent pressure that this is something you ought to do, despite all your reservations, doubts and very good reasons not too. This is the place where most *Licensed Lay Ministers* begin. Our stories speak of how we came to realise gradually that God

really did mean us to preach in spite of our inadequacies and failures.



As St. Paul wrote to the church at Corinth,

"Now there are varieties of gifts, but the same Spirit; and there are varieties of services, but the same Lord; and there are varieties of activities, but it is the same God who activates all of them in everyone. To each is given the manifestation of the Spirit for the common good."

1 Corinthians 12: 4-7

All of us have a role to play within our church family. What is yours?

Paul Barker

Licensed Lay Minister in training.

In Brief

Act of Remembrance



Standing outside of church, the two Poppy-filled trellises and the decorated doorway reminding us of lives lost, we really felt part of the national need to show we remember. With heightened emotions, we stood in a giant semi circle, witnessed the laying down of wreaths, said our prayers and kept the 2 minutes silence. A truly special occasion.

Christmas Cards



Sue Pagdin's lovely wintery painting adorns Christmas cards which are available for you to purchase in church. Just pop in when the church is open and leave your money in the tin provided. Sue is donating 40p for each card sold to church funds.

A Prayer can be a Gift

Prayer gifts at Christmas



Many churches, schools etc fill shoe boxes for deprived children. The boxes are covered in Christmas paper and filled with small gifts for children who may never have received any gifts. Children who live in poverty, hunger, or neglect, suffering illness, loss and deprivation from war, natural disaster or man's inhumanity to man.

We may never see these children, yet we can imagine their faces as they receive the box and open it to find the treasures inside. A toothbrush, a bar of soap or a pair of gloves may not be a treasure for our children – but we can buy them, these children cannot. The books, toys, coloured pencils, and sweets are more what we would expect in a gift box! The children may never see us, or be able to say thank you, but I am sure they will feel it in their hearts.

This month we celebrate God's greatest gift to us, his son Jesus. Do

we remember to say thank you to him for all the treasures he puts into our lives? It is not just at Christmas that we get a shoebox of good things, but most days of our lives. So often we do not appreciate all that we have. This Christmas, include prayer as part of your gift. Pray for the children who will receive shoeboxes, and for each person as you wrap up their Christmas gift or write their Christmas card. Pray for all those who will receive no gifts this Christmas. Then think of the things God has put into his shoebox for you and be thankful.



Besides praying for people when you write their Christmas cards, you could use the cards

you receive as an aid to prayer. When you take down your cards, put them by your Bible or in your prayer corner. Over the following days, at your quiet time with God, you could take one or two cards and pray specifically for the people who sent them. This could give a renewed focus to the post- Christmas cards period, and a positive start to the New Year.

Deidre Morris (ACE member)

Nature Notes

The vulnerability of the albatross

An unusual wildlife conservation effort has been going on this year on Gough Island – a remote and uninhabited island in the southern ocean. The RSPB has taken the lead in this and members will have read about it in their newsletter. The object of the exercise has been to rid the island of mice that really shouldn't be there. It is thought that they perhaps came ashore from a seal-catching ship in the late nineteenth century, and as there are no natural predators on the island their population has reached millions. The problem is that the mice, having eaten all the insects and vegetation, have discovered that they can make an easy living by taking blood from the legs of young albatrosses and other seabirds, as they sit on their exposed nests for up to a year after hatching. There have been reports that even incubating adult birds have been attacked in this way. Those attacked usually do not survive.

There are about 25 species of albatross; they spend most of their life at sea in a very harsh environment where strong winds and rough seas are the norm. Evolution over millennia means that they can find their way across trackless oceans, find food and return to the island where they were born, but evolution did not equip them to cope with mice. Mice

on the other hand have survived where no mice had ever lived before. Whether or not the exercise has been successful should become clear in the southern hemisphere summer, beginning about now.

In terms of life-style, the nearest bird to the albatross we have is the Gannet. When they are ready to leave the nest, young gannets can just about flop down into the sea. They are too heavy to fly, but until they can fly they cannot feed. They have to lose weight, and once they have slimmed down they go off on their own to learn how to find and catch fish, and how to find their way across the sea. Over four years their plumage changes, in stages, from brown to white, by which time they are adults and have learned enough to begin nesting and to be able to find enough food to raise their young. Albatrosses have a similar, but longer learning period and raising the large chick takes so long they can breed only in alternate years ,

As humans, we are always making changes to environments, sometimes accidentally, sometimes deliberately and nearly always contrary to what nature had provided. The most highly adapted animals are the most vulnerable, whilst generalists like rats and mice, crows and magpies -- live anywhere, eat anything and thrive.

Peter Larner

Q E Corner

Here it is again..... QE (Quite Enlightening) Corner. As some of you probably realise, I quite like trivial information, so for your enlightenment I am presenting you this month with a miscellany of "facts" related to the season.

Jingle Bells was written by James Lord Pierpont and was originally called "One Horse Open Sleigh" . It was written for his church's Thanksgiving concert in the mid-19th Century. Then in 1857, the song was re-released under the title we all know and love. Today, it's still among the most popular Christmas songs. Nine days before Christmas in 1965, two astronauts aboard the Gemini 6 told Mission Control that they saw an "unidentified flying object" about to enter Earth's atmosphere, travelling in the polar orbit from north to south. Just as things got tense, they interrupted the broadcast with "Jingle Bells," as Wally Schirra played a small harmonica accompanied by Tom Stafford shaking a handful of small sleigh bells.

The Christmas wreath first originated as a symbol of Christ. The holly represents the crown of thorns Jesus wore at his crucifixion and the red berries stand for the blood he shed.

Contrary to popular believe, "Xmas" is not a trendy attempt to take Christ

out of Christmas. Apparently "Christianity" was written "Xianity" as far back as 1100. X, or Chi, is the Greek first letter of "Christ" and served as a symbolic stand-in at the time. In 1551, the holiday was commonly called "Xtemmas," which was later shortened to "Xmas".

During World War II, The United States Playing Card Company joined forces with American and British intelligence agencies to create a very special deck of cards. They distributed them as Christmas gifts, but they also helped allied prisoners of war escape from German POW camps. When wet, individual cards peeled apart to reveal maps of escape routes.

Hollywood stars, Cary Grant and Clark Gable, who had the same initials, met once a year to exchange unwanted monogrammed Christmas gifts.

Mistletoe's name may come from the fact that mistle thrush birds eat the plant's berries, digest the seed, and then help the plant germinate with their droppings. The Germanic word for mistletoe literally means "dung on a twig."

Happy Christmas!

Trevor Cole

The Nativity Stories

In the popular imagination there is one Christmas nativity story, involving the journey of Mary and Joseph to Bethlehem, an over-full inn, a stable, a visit by shepherds, a subsequent visit by three exotic magi, whose enquiries unleash the wrath of Herod the Great, and a flight into Egypt before the holy family settle in Nazareth, the whole preceded by the account of the Annunciation to Mary by the Angel Gabriel, Joseph's uncertainty about what to do, and the companion narrative of the birth of John to Elizabeth and Zacharias, itself characterised by a sequence of events which mark it out as special.

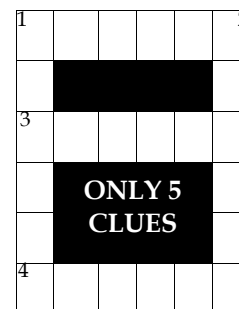
But this single narrative, as we carry it in our heads, does not exist: it is a conflation of versions of the story occurring in only two of the gospels. Mark starts with the beginning of Jesus' public ministry, while John's sets the tone for an approach to the good news of the gospel that makes it quite distinct from the other three. Only Matthew and Luke narrate the Nativity, but with different details and emphases one from the other. It prompts us to ask where these stories came from. They are clearly not from the authors' first-hand observation; how factually accurate is any of their detail? How had these stories been shaped and developed? How much had they been gradually re-framed to harmonise with the prophecies of the Old Testament, to which they refer?

By the time the gospels were written, the early Christians knew Jesus to be more than 'just' human: they knew him to be God incarnate, the 'Messiah', the 'Anointed One', or 'Christos' as it is in Greek. The birth narratives as we now have them may well have grown up as a way of helping people understand this.

Oral traditions invariably shape narratives as they are passed on. It is a progression in narrative formation that is found in all ages and cultures, all the more so when there is a compelling need for the narrative to convey a Big Idea, as in this case, when the Big Idea is the Incarnation and Redemption. At the simplest level, Matthew and Luke were probably drawing upon stories already developed to satisfy curious interest about the earlier stages of Jesus' life. Such infancy narratives would have satisfied a powerful expectation, found in all traditional cultures, that special figures (gods, heroes, and so on) are marked out by the exceptional nature of their birth and the circumstances surrounding it. A birth-narrative defining the nature of that exception is looked for, and Matthew and Luke met the need by including versions of the stories that had grown up around Jesus.

Joyce Hill

Puzzles



Across

1. Phone somewhere in Alabama
3. Feel bitter about unopened gift
4. Peace breaks out round south?
Get away

Down

1. Sullen little Maureen rebelled
2. Some apprenticeships are tempting

Sudoku—Easy

6					5		
7				1		4	
	4	3	2		9		
4	7	5			3		6 9
	2	8	9		7	3	5
3	9		1			7	2 8
		1			4	8	3
	3			5			7
		7					5

Word Square

Insert each of the following letters into the right cell, so that when the puzzle is completed each row and each column contains a real word.

U S F E E A C

		E	
A	R		A
S		L	
E		S	E

Solutions on p. 32

Children's Page



Here are some words connected with the story of the Nativity.
The letters are not in the right order—in fact they are in
alphabetical order!

Can you work out what the words are and what they should look
like?

A E G M N R

D E K N O Y

E J S S U

A D E M R

A C L O R S

D E E H H P R S

A H Y

A M R Y

B E E E H H L M T

A E E L P S

Solution on page 32

Poetry Corner

Advent Wish*

(A personal slant on the Christian theme)

Come Love
not down from heaven
but rising up here
enter in where the hearth, the room, the yard
the whole manor
wait to be occupied and fulfilled by you,
come inside soft Sweetness
straightaway taking up the high chair
and the princely gown
hallowing each by your Presence
and settling here regally
in the home made ready for you,
shine here bright Innocence
pouring light on this hard ground
radiating the low place
reserved from the start for you to glorify
where no gate, door, bar
business of mind or call of the flesh
can deter you
and stay on Emmanuel, seated in state
while on your say so I'll attend
standing by outside
relegated, stilled
smitten by bliss.

*i.e. that the word might be made flesh in each individual

Richard O'donnell

Richard is a retired primary school headmaster, living in Adel and subscribing to Adel Bells. He has spent much of his retirement time writing poetry. He has written several hundred poems and he feels that "they're introspective, expressing insight and observations of limited value to anyone else." I'll leave you to decide if that is true.

Editor

In Your Garden

*"How did it get so late so soon?
It's night before it's afternoon.
December is here before it's June.
My goodness how the time has flown.
How did it get so late so soon?"*
— Dr. Seuss

With so much else going on in December, so little daylight, a likelihood of inclement weather and discouraging temperatures, it is difficult to maintain enthusiasm for actual outdoor gardening at this time of the year. Far better to indulge in bouts of virtual gardening, delight in what worked well, reflect on what could be improved, and start to make a wish list, or even better, firm plans of action! Given the number of distractions the season brings, this cerebral gardening can easily be extended into the new year and enjoyed in warmth and comfort accompanied by suitable refreshments!

Next year I'm going properly resolve the irrigation in my garden with the addition of two more water butts and an automatic watering system for the greenhouse. Collecting rainwater is environmentally sound, can save you money and in most cases your plants prefer it to tap water. The water butts will also need to be screened from view so I have the perfect excuse to grow a couple more clematis to add to my collection and a climbing rose!

If you find you do get an opportunity for practical activity it's a good time to clean and sharpen secateurs and loppers. A sharpening stone will do for most blades, with a drop of oil where beneficial. It's also a good time to clean lawnmowers and hedge trimmers.

I always give my greenhouse a proper clear out, followed by a thorough wash inside and out with warm soapy water to get the glass clean again and to discourage any fungal or algal growth. Most years I will also dig in a few wheelbarrows full of well-rotted compost from my compost heaps to keep the soil as fertile as possible. There is a special pleasure in working in the greenhouse on a foul day, pottering about whilst listening to the rain pelting the glass.

If you really want to get out in the garden then how about putting out food for the birds. With short days our birds need to use all the available daylight to feed efficiently. As winter progresses their natural food supplies inevitably diminish so any supplements will be gratefully received. Bird feeders and nest boxes make excellent Christmas presents and there are so many attractive options available now.

George Turnbull
enquiries@adelgardencare.co.uk
www.adelgardencare.co.uk

History Groups

**The I152 Club now meets
every other Tuesday at 10am
at Kirkstall Abbey Visitor Centre.**

Free parking near the Abbey House.
This a free, friendly local history group for adults aged 55+ interested in learning more about the local area.

We continue to meet in person once a fortnight in the Visitor Centre, We are only allowed up to **30 people** in the room. If you're having difficulties doing this online, just ring (0113 378 4079) or email me and I will put your name down so I know we are not over on numbers.

On **Tues 30 Nov**, we have Lorraine Harding and Jane Abramson talking about what the monks ate and drank in Kirkstall Abbey, in what has to be



one of the best named talks we've ever had - **'Friar's Tuck'**.

To book for this talk use the online link, [https://](https://my.leedstickethub.co.uk/15091/15101)

my.leedstickethub.co.uk/15091/15101

The talks are in person only, but you can view them on Leeds Museums and Galleries I152 playlist on YouTube.



We finish the in-person season on

Tuesday, 14 Dec at 10am with a talk from **Shannon Cross**, a visitor assistant at Abbey House Museum but also an MA Architectural History student, on a history of council housing in Bradford **'From Terrace to Tenement To Tudor.'** Book with this link: <https://my.leedstickethub.co.uk/15091/15102>

Shannon has presented for us before for our Study Days series in the museum, and I know it will be a really good talk.

Why I152 ?

Kirkstall Abbey was first founded by Cistercian monks in **I152**.

For details, speak to Val Crompton or contact

Patrick Bourne

OPAL Activities



OPAL will be hosting our annual Christmas Craft Fayre on the **4th December**; this event will be the perfect opportunity for a bit of last-minute Christmas shopping from a range of local crafts people. There will be a brass band to keep us all entertained while we wait to see Santa in his grotto, as well as mince pies and hot chocolate. This is a wonderful event that brings the whole community together in a warm and inclusive environment.

The Movie Matinee Group (held the first **Wednesday** of each month at the Welcome In) which started in November continues to go from strength to strength with members enjoying a heart-warming Christmas movie on the 1st of December.

Monday afternoons (12-15.30) sees the community café area hosting **Souper Mondays**, this is a free event open to the whole community where you can come along and enjoy a delicious serving of homemade soup and a roll. We have information available on how to best keep warm and safe during the colder Winter months or you can just sit back and relax with friends.

Every alternate **Tuesday** afternoon OPAL runs a carers group which aims

to give support and friendship to carers, while the carers take time to talk about any issues that they may have had over a cup of tea and cake, their loved ones do various different activities while supported by OPAL staff and of course enjoy cake and tea too. If you would like further details of this group, please contact Sally-Anne at OPAL.

Throughout the Christmas school holidays, we will be hosting various Healthy Holiday activities (for ages 5-15 years) for example on the **20th December** there will be mini first aid and on the **23rd December** there will be a Christmas craft session.

We are also hosting weekly mandala craft sessions every

Thursday 12-2pm from the **11th of November until the 9th December** this is run on a pay as you feel basis.

If you are interested in joining in any of the activities or if you would like anymore information, you can call into the Welcome In Community Centre, call 0113 2619103 or email admin@opal-project.org.uk



A Christmas Recipe

Mincemeat Streusel

This is a Mary Berry recipe. Rather than create traditional mince pies, she tells us how to make a traybake. Once it is cooked, it freezes very well. In the original recipe Mary makes her own mincemeat and pastry, but when we made it we used a bought jar and ready-made pastry. I suggest you do the same.

Ingredients

1 jar of mincemeat
Shortcrust pastry

For the topping

75g/3oz butter
75g/3oz self-raising flour
40g/1½oz semolina
40g/1½oz caster sugar



Preparation method

1. Preheat the oven to 200C/400F/Gas 6 (fan 180C) and grease a 23x33cm/9x13in Swiss roll tin or equivalent.
2. On a lightly floured work surface, roll out the pastry to a rectangle slightly larger than the prepared tin, then line the base and the sides with pastry.
3. Trim the pastry level with the top edges of the tin and patch any gaps if necessary.
4. Spread the mincemeat evenly over the pastry base, using as much of the jar as you prefer.
5. To make the topping, melt the butter and allow this to cool slightly.
6. Put the remaining ingredients into a bowl and pour the melted butter over. Mix together until the ingredients combine to form a dough. If time allows, chill this mixture—this makes grating easier.
7. Using a coarse grater, grate the topping over the mincemeat and spread evenly.
8. Bake in the preheated oven for about 20-25 minutes, or until golden brown.
9. Cut into 16 slices, dust with icing sugar and serve warm with cream or brandy butter.

York Gate Update



Although the garden is closed, the café and shop remain open from the earlier time of **9am until 3.30pm**. Please check our website www.yorkgate.org.uk for details of the new menus that we now have on offer, particularly our breakfast choices. The shop has a range of Christmas cards, gift wrap and presents – including some new York Gate goodies - together with Friends membership at £30 and an afternoon tea voucher for two at £28.13 (at least 24 hours needed for booking). These last two can be bought over the phone (0113 267 8240 option 4), if that makes it easier.

The café and shop will both close on **Thursday 23rd December at 3.30pm**, with just the café reopening at **9am on Wednesday 5th January**. The café will then be open, throughout the winter, from Wednesday through until Sunday. If you would like to volunteer at York Gate, then Zoe is still busy recruiting volunteers so please do contact her zparker@perennial.org.uk. Have a good Christmas.

Sally Latchford

Finance and Administrator Co-ordinator
alatchford@perennial.org.uk
0113 2678240



Helping people
in horticulture
Perennial

Billy Flynn

Flu Season

Although the world is now almost completely open for business again, Covid still poses a threat, particularly to those with underlying health conditions. The NHS is well on with administering the third jab and it is essential you take advantage. It's easy to forget that flu is also a considerable threat and because we were all confined to barracks last year there was no real outbreak. So please ensure you get the flu jab too. Don't forget that it's available at the Adel Pharmacy as well as GP surgeries.

Housing and other developments

Adel Beck site - As you may have noticed, the housing development planned for the site adjacent to the Adel Beck School has not yet started. There are three separate developments planned for the site, housing and apartments, a care home and a pharmacy. The new build and conversion housing schemes are still being considered by the council planning department. As part of the planning process many developers are expected to contribute towards necessary highways works in the vicinity of the site, in this case on Tile Lane, and I understand this is near to resolution. Historic England also had concerns about the level of alterations proposed to the listed quadrant buildings and negotiations about this are ongoing. The pharmacy planning

application is likely to be considered before a decision is made on the Housing and Care Home applications. Given that the Adel Pharmacy is remaining where it is on Long Causeway it seems unusual for this application to continue. This will be a matter for Pharmacy England to consider. If it does proceed, any trees lost during construction will be replaced on a 3-1 ratio. The design of the Care Home has been amended at the request of planning officers and a decision on this scheme will be made along with the housing applications, to ensure the site is comprehensively redeveloped.

Weetwood Police Station site

The new owners are seeking a long-term use for this brownfield site which is likely to be residential development, which will need a planning application. There will be an opportunity for public comment.

Adel Little Free Library

The library has really taken off but we are still short of children's books.

Christmas and New Year

Please accept my very best wishes for Christmas and the New Year and for a peaceful festive season.

Billy Flynn: Telephone 0113 2613896, 07810 640282 or preferably by email to billy.flynn@leeds.gov.uk.

Barry Anderson

May I take this opportunity to wish all readers of Adel Bells a very Happy Christmas and, most importantly, a Healthy New Year!

New Design for Lawnswood Roundabout

Trees – Original scheme: 17 trees lost. New scheme 2 trees lost, to be replaced by a minimum of 6. A dying tree is also being removed on the east side of the A660 Ring Road and another tree coming out on the south east corner of the carriageway.

Safety – There are longstanding road safety issues at this roundabout and is high priority to be upgraded due to the number of accidents and incidents. Provision will be made for cyclists and pedestrians.

Design – Various cycle lanes and pedestrian crossings ways will be installed on the roundabout north, east, south and west. Exiting the roundabout towards Leeds, the inside lane will be bus, taxi and cycle lane only opposite Lawnswood school. The Leeds-bound side bus stop will be relocated. There will be a 3-metre carriageway width for the buses and a 3-metre width layby for other buses to pass stationary buses. On the roundabout itself, all accesses and exits will have correlated traffic lights. To get the pedestrian crossings to work the left turners will go on to the roundabout and stop to let

pedestrians and cyclists move. The traffic lights will be on all the time with different times of day having different timing plans in them to cope with the differences in traffic and travel journeys. The middle of the roundabout will have general planting less than 1 metre in height apart from the very centre which may have shrubs at a higher level or a tree, but this needs to take account of pipe work and cabling below the surface before anything higher is planted.

Consultation – This starts on 22nd November and, due to Christmas and New Year holidays, will run through to January. One public facing event will take place in early December, venues are being looked at but the YMCA is the favourite at present. Online consultation events are also planned. Localised engagement will take place prior to the public event and their plans are to do a letter drop to localised properties.

I would urge you to take part in the consultation.

Cllr. Barry Anderson
Adel & Wharfedale Ward
Direct Dial 0113 3367742
www.barryanderson.org.uk
Twitter @barryanderson19

Play Review

A safe return by the Adel Players



It is always a pleasure to attend a production by Adel Players, but the performance of 'Equally Divided' was even more delightful, given the events of the past 18 months and the fact that live indoor performance could once again return.

We were, as usual, privy to a wonderful set and show and were left pondering various moral questions in life, particularly on whether justice can be achieved by breaking the law. In brief, Edith stays at home looking after mother, whilst Renata goes out and lives her life. Mother may not be worth much, but a note she writes shortly before her death, gives Edith hope that her years of sacrifice, in looking after her mother, may not have been in vain – but where is this note and what exactly does it confirm? Add a solicitor called Charles and a shady antiques dealer, called Fabian and we had an evening

to brighten the October gloom.

With just four characters throughout, superb performances held the show together – and the lead character of Edith, played by Jane Claire, was exceptional. With monologues to her friend Doreen on the telephone, as well as her hopes and fears being expressed in conversation, Edith was a convincing character who expressed the disappointments she had experienced in life.

Her sister, Renata, had lead a full life, with husbands, money and movement around the world – such a contrast to the life of Edith. The two sisters were very different – and their interplay highlighted this. Janet Porter played this lively role and her scenes with Charles, the solicitor, in particular added comedy and entertainment. Chris Winstanley, new to Adel Players, played the role of Charles – a solicitor who as a widower, was clearly very enamoured with Renata, much to the chagrin of Edith. Charles was not perhaps as honest as a solicitor could have been and moral questions were raised within the play, linked to his behaviour and responses.

Antiques dealer Fabian, was played by David Lancaster – and it was wonderful to see him play a shrewd character who made Edith think about the reality of life and what could be

Next Production

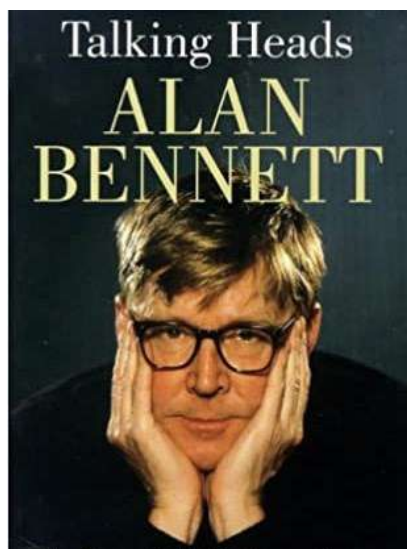
done to help her situation. His knowledge of the world impacted upon Edith significantly.

With a set that was based in one room, the story moved through the course of one day, and various aspects of the 1990's set were used to highlight the impact that parents had had and continued to have on their daughters.

A much enjoyed evening – and the next production of Talking Heads by Alan Bennett is scheduled for Weds 19-22 January. Book your seats early!

Donna Shoesmith-Evans

P.S. Adel Players had done their audience research and used it to plan for a “safe” return which enabled us to relax and enjoy the evening. This included the purchase of two air purifier machines, two CO2 monitors and the hall was well ventilated prior to each performance. In addition audience numbers were restricted - 50 rather than 120 usually accommodated for “theatre in the round” productions, as this was. Add in a one-way system, masks worn by the audience when moving around and being served refreshments to our seat – we all felt very pampered!



Widely celebrated as Alan Bennett's masterpieces, his multi-award-winning **Talking Heads** series of monologues returned to BBC TV during lockdown. Now, at Adel Memorial Hall from 19-22 January 2022, you can see four of these monologues – A Chip in the Sugar, Bed Among the Lentils, Her Big Chance, and Lady of Letters - performed by our own Adel Players' actors Rob Colbeck, Pauline Ashworth, Amanda Ashby and Mel Winstanley.

Tickets are £10. To reserve your seats, please phone Anne and Mike Andrews at 0113-2755585 or e-mail boxoffice@adel-players.org.uk.

Children's Page

MANGER
DONKEY
JESUS
DREAM
CAROLS
SHEPHERD
HAY
MARY
BETHLEHEM
ASLEEP

Only 5 Clues

Across

1. MOBILE
3. RESENT
4. ESCAPE

Down

1. MOROSE
2. ENTICE

6	1	9	4	3	8	5	7	2
7	8	2	5	1	9	6	4	3
5	4	3	2	7	6	9	8	1
4	7	5	8	2	3	1	6	9
1	2	8	9	6	7	3	5	4
3	9	6	1	4	5	7	2	8
2	5	1	7	9	4	8	3	6
8	3	4	6	5	1	2	9	7
9	6	7	3	8	2	4	1	5

Word Square

CUES
AREA
SELF
EASE



Ristorante
SORRISO

Brand New Family Run Italian Restaurant

429 Otley Rd,
Adel, LS16 6AJ
Tel: 2672671
for reservations

View our menu on line at
www.sorrisoleeds.co.uk

Opening Hours

Monday-Thursday 12 – 9pm
Friday & Saturday 12 - 9.30pm
Sunday 12 - 9pm

**Takeaway delivery available
every day**

Advertising

The magazine is published 10 times a year and goes out to 460 homes except for June when we circulate the whole parish (2600 homes)

Full page £140 per annum

Half page £80 per annum

Quarter page £50 per annum

+ £20 for alterations

For further information contact:

Beryl Thompson
10 New Adel Gardens,
Leeds LS16 6BD



0113 267 3875
beryl890@btinternet.com

CHIROPODY

Nick Simpson BSc Podiatry (Hons) MCPod

An essential health care service

at

WELCOME IN

Community Centre
55 Bedford Drive (off Tinshill Lane)
Ireland Wood
LS16 6DJ

Tel. 07751 078787
(by appointment only)

Health & Care
Professions Council
&
Simply Health registered



BUILDING, JOINERY

AND ROOFING CONTRACTOR

Catering for all your building requirements

Over 35 years in
the trade
All works
guaranteed

For a free inspection
and quotation
please call Alan on
07856 535 677



Locksmith & Security Installer

- Lock Upgrades
- CCTV & Alarm Installation
- Door & Window Repairs
- Safe Fitting
- Call for a free security assessment

Call Andy: 07721876571

LEMONLOCKSMITH.CO.UK

DBS CHECKED - CITY & GUILDS CERTIFIED

Covering Stanley & Nearby Areas



Bramhope Country Sticks

Spend a day learning the ancient art of stick making and make a unique walking stick of your choice to take home with you.

Included in the price-all materials, use of all tools and equipment, lunch and refreshments, in my workshop in Adel.
9.30 start usually finished by 2.30 cost £90

A good day out for all ages male or female, an ideal gift idea for birthday or Christmas. Book your course now for January or February and receive a 10% Discount.

Contact Roger: 07715422651 or email rdwilliams471@gmail.com

A testimonial

I really enjoyed learning the techniques to produce my stick. It was a very relaxed and informative day. My stick exceeded my expectations. Thank you for a great lunch and good company.
Graham

MSC Joinery Building & Roofing Services
Proudly supports Adel Bells



LABC Award-winning builders with over 35 years experience.
Quality workmanship guaranteed

07802816611 ♦ 07971810690
msc.cornell@btinternet.com
msc-building.co.uk

Looks like you need a Personal Assistant!

David Bransby is...



Do you recognise the scenario of trying to do all your home office work yourself? In doing so, sacrificing family, and your own personal time in the process?

I have been proudly serving clients in and around Adel for many years, restoring order and replacing chaos with calm.

Call on me, because you have a wide variety of home office related tasks that need carrying out in an efficient, effective, no fuss and professional manner. You want someone that you can rely on, who is private, confidential and totally trustworthy.

David is the epitome of everything a trustworthy, efficient & reliable P.A. should be. Effective at saving me both time & money. A rare find & an invaluable asset to my household.
AB - Bardsey

A free and no obligation consultation is just a phone call away.

0113 345 8287 - David Bransby – 07853 257 662

yourpaleeds.co.uk

ROXTON TREE SERVICES

ALL ASPECTS OF TREE WORK UNDERTAKEN

Large and dangerous trees safely removed All work carried out to British Standard 3998

Crown lifting and general pruning

Tree Preservation Orders checked

Hedge reduction/removal

Seasoned logs for sale (free delivery)

Stump grinding

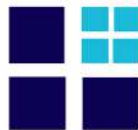
Woodchip available

Fully Qualified and Insured

FREE QUOTATIONS

tel: **0113 268 2235** mobile: **07773 298 770**

e-mail: **roxtontreeservices@gmail.com**



Adel Wills Ltd
For Wills and Lasting Powers of Attorney

Lasting Powers of Attorney and Wills

- Friendly and Professional Advice
- Home Visits
- Local Independent Business
- Fixed Fees

Please call **Jane Wintringham** BA (Hons) Law, MIPW
on
07931 369813 or 0113 305 3604
email: jane@adelwills.co.uk
www.adelwills.co.uk



A member of the Institute of Professional Willwriters
This firm is compliant with the IPW Code of Practice

ADEL WAR MEMORIAL ASSOCIATION

Adel Sports and Social Club



**Archery, Badminton, Bowls,
Cricket, Football, Hockey,
Lacrosse, Snooker, Squash
and Tennis are all played at Adel**



**Most sports have Junior Sections
with fully qualified coaches**

Social Membership just £12 per year

Adel Players produce 3 plays per year

**Tickets can be obtained from
boxoffice@adel-players.org.uk
or 0113 275 5585**



Rooms available for Hire

**From the main hall for weddings and special
events to smaller rooms for office
training days, children's parties,
meetings etc.**



**Lounge and bar facilities available for
Funerals and events during the day**

**For details contact Sam Jackson on
0113 293 0525 or
membership@adelclub.co.uk**

**Alternatively please check out our Web site
www.adelclub.co.uk**



**RESPONSIBLE
EQUITY RELEASE**
Responsible for your comfortable retirement

Could you release tax-free cash from your home?

More and more homeowners are releasing equity to fund their ambitions.
If you are interested in local, no-obligation advice, then contact:

Paul Murphy
Yorkshire's Trusted Equity
Release Specialist



“Paul made all the necessary arrangements...

...and gave us advice and guidance at every stage of the process, always on hand to answer our queries no matter how trivial.” - Ian and Mandy Stewart, 2019



★ Trustpilot

Call Paul today, on: **07816 061170**
or visit him at: responsible.org.uk/paulmurphy

This is a Lifetime Mortgage which may reduce the value of your estate and may affect your entitlement to means-tested state benefits. To understand the features and risks ask for a personalised illustration. Responsible Equity Release is a trading style of Responsible Life Limited. Only if the case completes will Responsible Life Limited charge an advice fee, currently not exceeding £1,490.

Christmas at Crag House FARM

The Granary Restaurant is the ideal venue to book your Christmas gathering

Booking is essential at www.craghousefarm.com. For parties of 6 or more please call 0113 230 3618

Lunches
from
£10



Christmas Lunch Menu

Available from Wednesday 1st December
Served 12 - 3pm
Visit our website to view the menu!

Festive Afternoon Tea

Available throughout December
Bookings taken for 3pm & 3.15pm
Advance Booking Only



£14⁹⁵
per person for
our Christmas
Afternoon Tea.

Buy your Christmas "Tree For Charity" from Crag House Farm this year!

Choose your top quality Nordmann Fir non-drop Christmas Tree! Buying your tree from us, helps Caring For Life, make someone else's Christmas special too!



Christmas
Trees available
from
**25th
November**



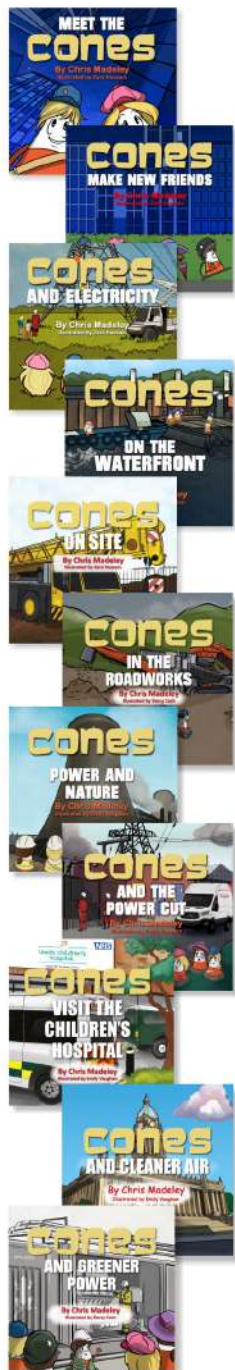
Christmas
Wreaths from
£10

Handmade Christmas Wreaths for your door, made in our Garden Nurseries.
Plus a great range of seasonal plants!

Have a Happy Christmas, from Crag House Farm

Crag House FARM

Crag House Farm - the home of Caring For Life • (0113) 230 3618
Otley Old Road, Cookridge, Leeds LS16 7NH • www.craghousefarm.com



Companies and organisations supporting child safety, friendship and moral and ethical principles through The Cones series of books include:

Balfour Beatty
BAM Nuttall
Bion Energy
Bradford College
Caddick Construction
Drax Power Group
Enjoy Digital
Environment Agency
ENGIE
Eurovia
Grand Central Rail
Genovate Power Solutions
Jaguar Cars
Leeds Childrens Hospital
Leeds City College
Leeds City Council
Leeds Trinity University
Northern Powergrid
NSPCC
Q Parks
Ringway
Sevensun
Town Centre Securities
Traffic Management Services

Note: Trademarks may apply



6 Floors of Beds & Bedroom Furniture **Bedside Manor**

108 – 112 Burley Road Leeds LS3 1JP
 (Behind Yorkshire Television)

0113 24 25 600

Email: BSM6floors@aol.com

See us on Facebook

Our family business has been supplying quality beds and bedroom furniture to discerning customers for over 20 years.

We know just how important it is for you to make the right choice for sleeping comfort and to suit your lifestyle.

Our personal service assures you of the best advice to help you select from our wide ranges of mattresses, divan beds, bedframes and bedroom furniture.

Bespoke options are also available so you can achieve the look to complement your bedroom

Come along and see us: We're open 7 days.

Bring this with you and receive an extra 10% off*

*Excludes Sale Items



Do you need someone to mow your lawn?

Call Michael.

I'm neat, reliable and standing by
 to mow your lawn and neatly trim
 your edges!

I also offer a path and driveway pressure-washing service to brighten up your garden. Call me: **07824 312899**
 (Please leave a message if I don't answer – I may be out gardening !)

Email me: thompsonandkelly@gmail.com

Rate: £15 per hour

(Minimum charge £8)

Evening
Wedding
Receptions



Headingley
Golf Club

Birthday
Parties

Thinking of having a party
or a special function?
Why not try Headingley Golf Club
(behind Adel Church)?

We can accommodate up to 130 people.
We cater from a simple Buffet to an
à la Carte menu.
Packages tailored to your requirements.

Fully licensed bar with spectacular views over the
Golf Course.

Either pop in for a chat with
Andrew or Tracey or give us a
call on the number below.

Anniversaries

Funeral
Wakes

Headingley Golf Club
Back Church Lane, Adel, Leeds LS16 8DW
Tel: 0113 267 9573 Option 3

LAWRENCE GAUNT OPTICIANS

Ireland Wood Surgery
Iveson Approach, Leeds, LS16 6FR

Professional
Comprehensive Eyecare
Family Opticians since 1978
Personal Service
Friendly Independent Advice

0113 267 9547

info@lawrencegauntopticians.co.uk
www.lawrencegauntopticians.co.uk
professional eye care with a smile

Full wheelchair access
Free on-site parking
Home visits available

Ribbons INTERIORS

curtains...blinds...soft furnishings...upholstery

10 The Crescent, Adel, LS16 6AA
tel: (0113) 3457424
www.ribboninteriors.co.uk

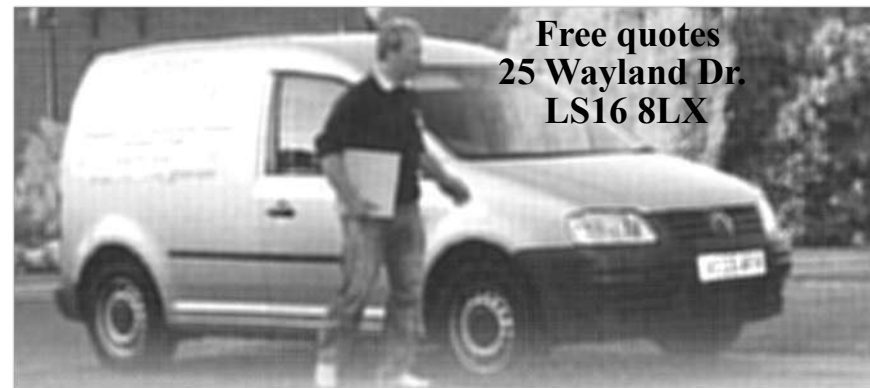
affordable, aspirational interior design
based in Adel, from individual pieces to
full room makeover

now stocking paint from Hicks & Weatherburn



RIBBONS INTERIORS

design...make...source...fit



ADEL TILING SOLUTIONS

Brian Hurst has over 20 years experience in tiling. If you are looking
for an experienced local tiler to get the job right, first time, call

0113 368 9769 or **07712 896711**, email: **brian_hurst_@msn.com**

No job too big or too small. Cleaning & re-grouting/ silicone removal,
ceramic floor & wall tiling inc. mosaic & stone products.

ADEL GARDEN CARE

Is your garden in need of some extra care?



We are experienced in all aspects of plant care including border maintenance, weeding, pruning, training climbers, wildlife gardens, renovating shrubs.

We install fencing & decking, jetwash patios, revitalise ponds.

**Contact us for a free estimate:
07815 206610**

www.adelgardencare.co.uk

enquiries@adelgardencare.co.uk

SLATER'S FUNERAL SERVICE

**Genuine Independent Family Business
Established 1884**

**135 years caring for the deceased and
bereaved families, offering a personal,
caring and dignified
24 hour service covering all areas**

**Oakford House, 291 Low Lane, Horsforth,
LS18 5NU**

Tel 0113 258 2395

www.slatersofhorsforth.co.uk



LOCAL PROFESSIONAL LOCKSMITH

24 HOUR CALLOUT WITH NO CALL OUT CHARGE

10% DISCOUNT FOR OAP's AND STUDENTS

New Locks Fitted - Changed - Replaced Burglary Repairs & Boarding Up

Snapped Keys in Locks - Fixed Defective Locks Repaired Replaced

Locked Out? Rapid Response – 20 MINUTES

UPVC Window & Door Specialists

All Types of Locks & Keys Supplied British Standard Locks Fitted

TEL:07947160788

Matthew Holmes

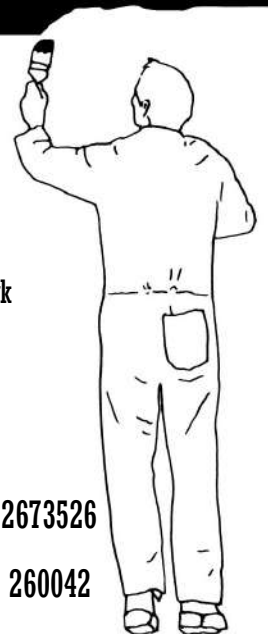
*Domestic and Commercial
Painter and Decorator*

High quality work
Clean, reliable, friendly
Over 26 years experience

Interior & exterior work
Paper hanging
Coving

4 New Adel Avenue,
Adel, Leeds, LS16 6BE
Email: mholmesdecorating@live.co.uk

Home: 0113 2673526
Mobile: 07725 260042



Your Hearing is Priceless

Providing you with a quality hearing healthcare service...

Our award winning Audiologists have many years of experience working in the NHS and private sector. They are HCPC Registered and members of the British Society of Hearing Aid Audiologists (BSHAA). Our clinical lead is an experienced ENT doctor who works closely with the world's leading hearing aid manufacturers, allowing him to gain an extensive knowledge of the latest developments in hearing aid technology. We are passionate about audiology and will continue to deliver the personal and caring service that you deserve.

HOW WE CAN HELP YOU TODAY

Complimentary hearing consultation
FREE trial of the latest hearing aids
Specialist Tinnitus therapies
Wax removal service
Custom ear plugs

Introductory Offer
20% off all hearing aids.
Call now.

Contact us to see how Resonance Audiology Services and the latest discreet digital hearing technology can improve your quality of life!



Hear family, friends & loved ones
Listen to the TV comfortably
Hear better on the telephone
Communicate better at work & socially

If you're concerned about your hearing, a visit to us is an easy, comfortable way to understand more about hearing loss and learn more about solutions that fit you and your budget.



Call: 0113 418 2548 for a free hearing test and advice

"Where sound ingenuity meets life's little details."

Suite 4, McCarthy's Business Centre
Meamwood Road
Leeds, LS7 2AH
www.resonanceaudiologyservices.co.uk

Local health and fitness club



Offering a friendly gymnasium, fitness studio, leisure pool, spa pool, steam and sauna rooms

Come along for a free trial
Or for more information on membership call
0113 2699010
Hannah.bullock.020@jupiterhotel.co.uk



Feel Good Health Club
Mercure Leeds Parkway
Otley Road
Bramhope, Leeds LS16 8AG



Arthur Clemens

PAINTER AND DECORATOR

43 LONG MEADOWS, BRAMHOPE, LEEDS, LS16 9DU

High Class Interior & Exterior
work undertaken

For Free Estimates call
0113 267 6485
Mobile 0788 7681793

Adel Pharmacy

141 Long Causeway
Adel Leeds

◆ Enquiries, please phone 0113 230 0351

◆ Excellent parking

◆ Collections & delivery of prescriptions where necessary,
free of charge week days only

Monday	8.15-12.30 14.00- 18.00	Thursday	8.15-12.30 14.00-17.00
Tuesday	8.15-12.30 14.00-17.30	Friday	8.15-12.30 14.00-18.00
Wednesday	8.30-12.30	Saturday and Sunday	CLOSED

Aerial Solutions

A Family run Leeds business with 27 years experience

All work guaranteed
Debit & Credit card payments welcome
7 Day Service
Extra TV/Sky points from £40
Dish & Freesat Installations
CCTV Installations
OAP Discount
Ring 0113 512 6127
FREE 0800 328 7517
*on all supplied & installed equipment



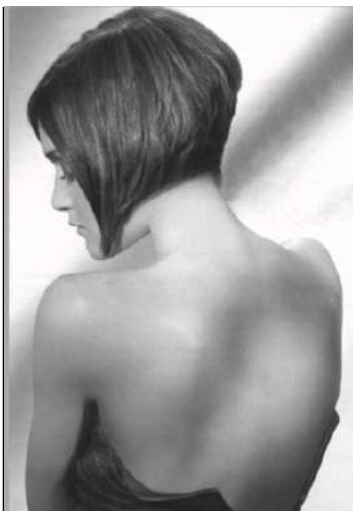
**D. P. A. FLETCHER
(BUILDERS) LTD**

**All aspects of Building, Joinery
& Property Repairs**

(with over 30 years of experience)

Tel: 0113 263 0515

jackie.dpafletcherbuilders@gmail.com



Padd Hair Studio

6 The Crescent
Adel
Leeds LS16 6AA

Opening Hours
Tues 9am—3pm
Wed 9am—4pm
Thurs 9am—7pm
Fri 9am—4pm
Sat 8am - 2pm

Tel 0113 267 4388

We are a well-established friendly salon run by Andrea Petrou for over 12 years. We are tucked away on a little parade of shops on The Crescent behind the Co-op on Otley Road.

There are four stylists, two assistants and a junior. Our clients are **men, women, teenagers and children**. We have entire families who have over the years become friends and we have enjoyed watching the younger members growing up.

**SPECIAL INTRODUCTORY OFFER FOR
ALL NEW CUSTOMERS**

**Offer available through the week
Cut & Style for just £19.00**

QUOTE ADEL BELLS TO CLAIM YOUR VOUCHER

Find us on Facebook



R. Pearson
Electrical and Plumbing

R Pearson Electrical and Plumbing
All aspects of Electrical and Plumbing work undertaken

Consumer unit upgrades/ periodic testing
Internal and External Electrics and Lighting
Electric and Gas Cooker/Hob Supply and Installation
CCTV Security Systems and Intruder Alarms
Flat Screen TV and AV Installation
Fault finding and rectification
Gas Safe Repairs
Boilers and Boiler Services
Leaking Taps
Radiator Changes
Bathrooms
Outdoor Taps



Free Quotations
Tel: 07796000600

enquiries@rpearsonelectricalandplumbing.co.uk
www.rpearsonelectricalandplumbing.co.uk



J. E. SPENCE

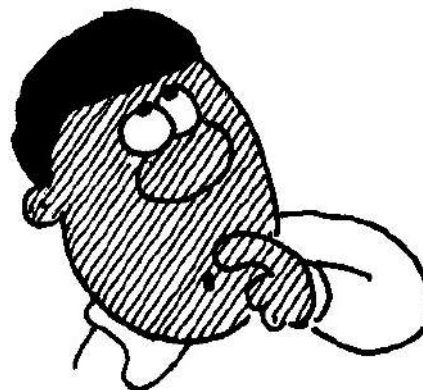
FUNERAL SERVICE

Part of Dignity Ltd – A British Company



The Lawnswood Funeral Home
Otley Road, Adel, Leeds LS16 8AA

Pre-paid funeral plans
Monumental Masonry
Floristry Service
Tel: **0113 268 2842** for personal attention



Jane Hair

**Friendly Salon with
competitive prices and
personal service**

Colours, Dry Cut, Perms,
Sets, Cut & Blow Dry
find me at

No. 8 Cottage Road
Headingley

Mobile: 07982129139



**Proud to be
supporting our
local community**



**FOOT HEALTH
PROFESSIONAL &
CLINICAL REFLEXOLOGIST**
**CARING FOR YOUR FEET IN
YOUR OWN HOME**

General foot care, corns, Callus,
Fungal nail, diabetic foot checks

Contact
YVONNE TROTTER MAFHP, MCFHP
07841140333
yvonnetrotter@yahoo.co.uk



**DISCOVER
BEAUTIFUL
GALLOWAY!**

Spacious 3 bedroom bungalow for holiday
let sleeps 6 +1 + cot

Direct access to safe, sandy beach at
Sandgreen

Ideal for swimming, water sports and
rock-pooling!
Large private garden Family friendly

Forest Park, Conservation Zoo, Loch Ken,
Open Farms and numerous castles only a
short drive away.
South West Scotland – 4 miles from
Gatehouse-of-Fleet

Email or call
brackenriginfo@btinternet.com
Mob: 07812164522

www.holidaycottagegalloway.co.uk



Specialist Neurophysiotherapy For people of all ages

Stroke, Brain & Spinal Injury
Multiple Sclerosis
Parkinson's
Mobility & Balance problems
Vestibular rehabilitation
Developmental Co-ordination Disorder
Cerebral Palsy

Free initial telephone consultation
Home visits available

Leeds Neurophysiotherapy practice
6 Over Lane, Rawdon, Leeds LS19 6DY

Tel: 0113 2508833

Email: practice@leedsneurophysiotherapy.co.uk
Website: www.leedsneurophysiotherapy.co.uk

APplastering



Fully qualified plasterer
over 30 years experience
Fully insured
All plastering work undertaken
Internal and external
No job too small from
patching to full house

For a competitive quote
call Andy on 07814705238



Trade and DIY Welcome

Our family business
supplies a wide
range of garden and
landscaping materials
from our quarry in
Bramhope, Leeds



Topsoil, sand, gravel, slate and many
types of stone. Available loose or in bags.
Collect or delivery.

Blackhill Quarry
Kings Road, Bramhope, Leeds LS16 8BG
T: 0113 267 4386
Open: Mon-Fri: 7am-5pm, Sat: 7am-1pm

www.MONEBROSdiy.co.uk



HELP YOUR CHILD REACH THEIR
**FULL LEARNING
POTENTIAL**



Primary - Secondary • Qualified Teachers • Personalised Learning Programmes

At Kip McGrath, our focus is to help your child reach their full potential.

We make learning fun and engaging to improve results. You will
receive progress reports and updates to track your child's improvement.

English and Maths Tuition



In Centre



Online

Book a **free assessment** today

Adel 07815 760509

485 Otley Road LS16 7NR

kipmcgrath.co.uk/leedsadel



North Leeds Physiotherapy and Sports Injuries Centre

Sarah Beldon MCSP HCPC
3 Kingsley Road, Adel,
Leeds LS16 7NZ

Ring 0113 285 7378 or 07908151241
Daytime and evenings available

APPI Physiotherapy led modified
Pilates Classes in Adel Stables
—days or evenings



Female painter and
decorator
20 years' experience.
Professional and reliable
Tel: 07398 882 306 or
Email
harperddiy@gmail.com



Blueberry Automation

are local, family
run, with over 20 years experience in home
automation.
Roller garage door specialists including
awnings and all external motorisation.
Now recognised as Yorkshire's leading
Somfy expert, TaHoma/Connexoon
commissioning available.
Internal motorisation now extending in to;
blinds, curtains, lights, heating, alarms,
cameras and beyond!

Contact
Email: blueberryautomate@gmail.com
Phone: 07479 662021
web: <http://blueberryautomation.co.uk>

Index of Advertisers

Aerials & Satellites	Health Care
50 Aerial Solutions	33 N. Simpson, Chiroprapist
Beds	47 Hearing
42 Bedside Manor	48 Mercure Health Club
Builders/Joiners	54` Foot Health
35 MSC	55 Leeds Neurophysiotherapy
50 DPA Fletcher Ltd	57 North Leeds Physiotherapy
55 APplastering	Holiday Home Rental
Building Supplies	54 L Gibson
55 Mone Bros.	Interior Design
Education	44 Ribbons
56 Kip McGrath	57 Blueberry Automation
Electrical & Plumbing	Leisure Interests
52 Pearson	35` Bramhope Country Sticks
Equity Release	38 Adel War Memorial Association
39 Paul Murphy	41 Meet the Cones
Estate Agents	43 Headingley Golf Club
53 Manning Stainton	Locksmith
Food Outlets	34 Locksmith & Security Installer
32 Ristorante Sorriso	46 The Lockdoc
40 Caring for Life	Opticians
Funeral Directors	44 Lawrence Gaunt
45 Slater's	Painters & Decorators
53 J E Spence Ltd	46 Matthew Holmes
Gardening Services	49 Arthur Clemens
37 Roxton Tree Services	57 Harperddiy
42 Michael, lawn cutting	Personal Assistant
45 Adel Garden Care	36 David Bransby
Hair and Beauty	Pharmacies
51 Padd Hair Studio	49 Adel Pharmacy
54 Jane	Tiling
	44 Adel Tiling Solutions Ltd
	Wills
	37 Jane Wintringham

January Services

Sunday 2nd		Epiphany
	8.30am	Holy Communion (BCP)
	10am	Parish Communion with Junior Church*
	6.30pm	Evensong (BCP)
Wed 5th	11am	Holy Communion
Thurs 6th	7pm	Epiphany
Fri 7th	1.30pm	J Js (for the under sixes)
Sunday 9th		Baptism of Christ
	8.30am	Holy Communion (BCP)
	10am	Parish Communion with Junior Church*
Wed 12th	11am	Holy Communion
Sunday 16th		Second Sunday of Epiphany
	8.30am	Holy Communion (BCP)
	10am	All Age Service with Communion
	6.30pm	Evensong (BCP)
Wed 19th	11am	Holy Communion
Sunday 23rd		Third Sunday of Epiphany
	8.30am	Holy Communion (BCP)
	10am	Parish Communion with Junior Church*
	6.30pm	Evensong (BCP)
Wed 26th	11am	Holy Communion
Sunday 30th		Fourth Sunday of Epiphany
	8.30am	Holy communion (BCP)
	10am	Parish communion with Junior Church*

* Booking needed. Please see details on back cover.



December Services

Fri 3rd	1.30pm	J Js (for the under sixes)
Sunday 5th		Second Sunday of Advent
	8.30am	Holy Communion (BCP)
	10am	Parish Communion with Junior Church*
Wed 8th	11am	Holy Communion
Sunday 12th		Third Sunday of Advent
	8.30am	Holy Communion (BCP)
	10am	Parish Communion with Junior Church*
	6.30pm	Evensong (BCP)
Wed 15th	11am	Holy Communion
Sunday 19th		Fourth Sunday of Advent
	8.30am	Holy Communion (BCP)
	10am	All Age Service with Communion
	6.30pm	Evensong (BCP)
Wed 22nd	11am	Holy Communion
Sunday 26th		First Sunday of Christmas
	8.30am	Holy Communion (BCP)
	10am	Parish Communion with Junior Church
Wed 29th	11am	Holy Communion

For full details of our Christmas services, please see page 8

*There is now a booking system via Eventbrite for a place for your child in Junior Church. Unfortunately at this time we do not have capacity for under 3s. The age groups you can book on Eventbrite are

3-5yr olds - Pebbles
6-8yr olds - Rocks

The link for booking Junior Church is
<https://tinyurl.com/Adel-Parish-junior-church>

On the **3rd Sunday** there is a 10am All Age service, with communion, and children are welcome for the whole of the service in church.