



The holly and the ivy . . .



You are invited to our Community Carol Service, 6.30pm, Sunday 17th December

# December 2023/ January 2024

**Rector** Revd Alison Battye 25 Church Lane Adel LS16 8DQ  
alison.battye@leeds.anglican.org 267 3676

**Churchwardens** Anne Andrews 32 Ancaster Road LS16 5HH 275 5585  
anne.andrews@ntlworld.com

Alison Howarth Apt1, Garmont Court LS7 3RU 262 4622  
ahowarth@hotmail.com

**PCC Secretary** Andy Neal 468 Otley Road, LS16 8AE 07415 424 964  
adelpccsecretary@gmail.com

**PCC Treasurer** Bob Holloway 10 Adel Pasture LS16 8HU 267 9360  
bob@hollowayassociates.co.uk

**Safeguarding Officer** James Moxon 07984164782

**Planned Giving** Helen Hallett 217 8845

**Choirmaster** Chris Cunliffe 267 6767

**Funeral Verger** Iain F. Welsh 267 9364

**Assistant Funeral Verger** Lucy Best-Shaw 217 2963

**Flower Rota** Lucinda Lillford 07795685870  
(evenings only)

**Environmental Officer** Thang Tang  
adel.eco.church@hotmail.com

**Wedding Verger** Sue Smith 261 0349

**Assistant Wedding Verger** Gillian Batcup 267 7223

**Local History Enquiries** Val Crompton 225 9142  
email: vjcrompton@ntlworld.com

**Adel St John School Head Teacher** 27 Wayland Drive LS16 8LX

**Parish Hall Bookings** Mr Peter Dalrymple 261 1804

**Adel Bells Editor** Loveday Loveridge 07974 321466

**Magazine Advertising** Marjorie Cole 261 0069  
beryl890@btinternet.com

**Distribution:** Beryl Thompson 267 3875

**Website:** 10 New Adel Gardens LS16 6BD

Sandra Lavery 261 2008

Trevor Cole 261 0069

**Adel Bells**  
(Please email copy by **10th of the month**)

**Parish Hall Bookings**

**Church Website**

Follow us on Facebook or Twitter

adelbellscm@gmail.com

adeloldstables@gmail.com

www.adelparishchurch.org.uk

Adel Parish Church



**The Parish Church of St John the Baptist, Adel**  
 Enquiries including Home Communions, Baptisms, Confirmation,  
 Weddings, Funerals; please look at the church website  
[www.adelparishchurch.org.uk](http://www.adelparishchurch.org.uk)

## Contents

### Our Church

Rector Alison's Letter	6
Churchyard Appeal	7
Also in December & January	8
In Brief	9
Praying for . . .	10
Penny's Ponders	12
Environmental News	13
Christmas Concert	14
Beat the Blues Brunch	15
Advent Quiet Day	16

### For your Interest

Christmas Jumper Day	17
QE Corner	18
Val Writes . . .	19
My Day in Cups of Coffee	20
Nature Notes	21
Nativity Scenes	22
Joyce Hill	23
Puzzles	24
Christmas Quiz	25
The Story behind the Grave	26
In Your Garden	27
Hope Pastures	28
OPAL	29
Adel Players' Review	30
York Gate Update	31
Recipe of the Month	32
What's On	33
Barry Anderson	35
Billy Flynn	36
Solutions	38
List of Advertisers	62



### Adel PCC Members 2023–2024

Anne Andrews, Paul Barker,  
 Lucy Best-Shaw, Bruce Buchan,  
 Marisa Clayton, Marjorie Cole,  
 Tina Gledhill,  
 Bob Holloway, Alison Howarth,  
 Ruth Hutton, Sarah Johnson,  
 Jenny Jones, Mary Lerner,  
 Loveday Loveridge,  
 Andrew Neal, Mark Seaward,  
 Sue Smith, Carole Smithies,  
 Thang Tang, Mike Tunstall,  
 Leanne Winfield

### Magazine Editor

Marjorie Cole

### Illustrators

Val Crompton  
 Marjorie Cole

## Parish Registers

### Burial of Ashes

**20th October**

Muriel and Ronald Lumb

**25th October**

Archie Lewis Filewood

**13th November**

Joan Duncombe

### Funeral

**24th October**

Margaret Holliday

**13th November**

Pauline Brown



## Festivals & Feasts

**25th December**

Christmas Day

**26th December**

Stephen, deacon, first martyr

**27th December**

John, Apostle & Evangelist

**28th December**

The Holy Innocents

**1st January**

Naming and Circumcision of Jesus

**8th January**

Baptism of Christ

**25th January**

Conversion of Paul

**28th January**

Candlemas

## Father of All

God is not far away;  
 he is not out of reach.  
 He, who existed before the  
 universe,  
 who created  
 and has power over all things,  
 is here,  
 in our worship.  
 He is not brown or black or white;  
 He is the Father of all  
 and through him we live.

He is with us in all the confusion  
 of modern life.  
 He comes to us in Jesus Christ,  
 to live among us;  
 to make himself known to us,  
 yesterday,  
 today,  
 and tomorrow.

Anon



**Church Open for Visitors**  
 Monday and Saturday 1.45pm to 3.45pm

## Parish Registers

### Burial of Ashes

**20th October**

Muriel and Ronald Lumb

**25th October**

Archie Lewis Filewood

**13th November**

Joan Duncombe

### Funeral

**24th October**

Margaret Holliday

**13th November**

Pauline Brown



## Festivals & Feasts

**25th December**

Christmas Day

**26th December**

Stephen, deacon, first martyr

**27th December**

John, Apostle & Evangelist

**28th December**

The Holy Innocents

**1st January**

Naming and Circumcision of Jesus

**8th January**

Baptism of Christ

**25th January**

Conversion of Paul

**28th January**

Candlemas

## Father of All

God is not far away;  
 he is not out of reach.  
 He, who existed before the  
 universe,  
 who created  
 and has power over all things,  
 is here,  
 in our worship.  
 He is not brown or black or white;  
 He is the Father of all  
 and through him we live.

He is with us in all the confusion  
 of modern life.  
 He comes to us in Jesus Christ,  
 to live among us;  
 to make himself known to us,  
 yesterday,  
 today,  
 and tomorrow.

Anon



**Church Open for Visitors**  
 Monday and Saturday 1.45pm to 3.45pm





Part of Christ's family, welcoming  
everyone, sharing God's love  
and being a voice of hope

## From the Editor

This edition comes with heartfelt wishes for a happy Christmas and a peaceful start to the new year from all on the Adel Bells team.

Last month saw an even larger display of poppies outside church than ever before. We had a moving service of remembrance in front of the church porch, as described by Val Crompton on Facebook:-

Despite cold and misty weather, neighbours and dog walkers gathered in Adel Churchyard. We were joined outside by Rector Alison, choir members, Junior Church and other members of the congregation. We heard the 43 names of the fallen from Adel-cum-Eccup Parish; the Last Post was sounded and the two minute silence was kept. Children and dogs kept quiet. We noticed the leaves falling from the churchyard trees and

some of us shed a tear when we sang 'God save the King'. The service was another example of how important a role the churchyard plays in both our church and our community life.

On a lighter note, I invited Jenny Jones to have a go at writing a new type of magazine piece, entitled "My Day in Cups of Coffee". It gives us an insight into Jenny's daily routine. I wonder how it compares with yours. If any of our readers would like to write a similar piece about their routine, please get in touch with me and your piece could be included in the February magazine. I love to hear from our readers.

In December the Christmas Angels will be travelling through Adel. If you are fortunate enough to find one, wherever it might be, please keep it and look after it. Thank you to the many happy crafters who have created them.

**Marjorie Cole**

If you would like to have an annual subscription to Adel Bells, delivered to your home if you live in Adel or posted to you if not, please get in touch with me and I will give you the necessary information.

**Marjorie Cole, Editor, 0113 2610069**  
**adelbellscm@gmail.com**

## Rector Alison's Letter

Many years ago, as a trainee teacher, I was involved in the staff number at the school Christmas concert. As we geared up for fun, presents, food, we were raising money for those less privileged. We sang a version of the Band Aid single, 'Do they know it's Christmas time?'

You may remember it; written to raise money to alleviate famine in Ethiopia in the 1980s, the words seem to suggest Christmas is only relevant to those able to celebrate in comfort.

Of course, if you are struggling just to survive, then turkey dinners, tinsel and frivolous presents will be far from your mind. But what the record, with all its worthy aims, had forgotten is that those are just some ways we choose to mark Christmas.

Even in our relatively cushioned lives here in Adel, the world can seem dark at the moment. The climate emergency can make us feel helpless, and wars seem closer than for decades. We are aware of the many in our own city who regularly go hungry. Christmas, with all its food and drink, decorations, outings, presents can seem at odds with what is going on around us.

But since Christmas is the story of God loving his people so much that he came to live alongside us in all the mess and muddle of human lives,

difficult times are probably when Christmas is most relevant and has most to say.

Its chief characters are an unmarried pregnant teenager, and the man who decides to stick by her. Its setting is a country under occupation where the young couple are forced to travel just as the baby is due. But for the kindness of strangers, it would be a story of a baby born on the streets.

It is a story of good news revealed first to shepherds, a marginalized group often looked down on. It is a story of a life almost ended before it began as the new family are forced to flee for their lives, becoming refugees until it is safe to return home.

So it is a story of God looking at where society is divided and people are suffering and saying, that is where I belong. It is a story of hope in the darkness, as much as joy in the light.

The Christmas message is the message of Jesus' whole life: a life where every individual was loved and valued, whatever their circumstances; a life that taught about love, for friends, neighbours and even enemies; a life that told of God's love for us, in the good times and the bad.

With good news like that, of course, parties, presents and joy are an understandable reaction, but it is also

good news in the darkness. So we will be gathering at Adel Church this year, as people have done for hundreds of years to celebrate God's gift of love.

From the quiet of 'A Blue Christmas', through the music of our Carol Service, to the joyous crowds of crib services, and the celebration of hope as we gather round God's table at Midnight Mass and Christmas morning, hopefully there is a place that feels right for you this year. Everyone is welcome.

With love and prayers for you all  
**Alison**

## Churchyard Appeal Update

Just a reminder of our need to raise money to keep our churchyard safe. Our goal is £25,000; by early November we had raised **£9,214** - an encouraging figure. A huge thank you to all those who have made a donation. If you have not yet done so, please use the QR code or the link:-

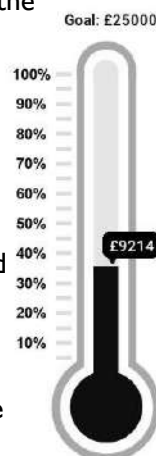


[tinyurl.com/adelchurchyard](https://tinyurl.com/adelchurchyard)

Or leave cash in church or send a cheque (payable to Adel PCC) to the Rectory.

Many thanks,

**The churchyard committee**



## For your diary

### 2nd December

Christmas Coffee Morning  
10am to 11.30am

Please note the change of date  
and an earlier start than usual

### 3rd December

Sale of charity cards and gifts  
in the Stables  
After the 10am service

### 9th December

Advent Quiet Day  
See p 16

### 16th December Wassail!

3pm in Church  
Concert by Leeds Guild of Singers  
With mulled wine & mince pies  
See p 14

### 27th January

Beat the Blues Brunch  
10.30 to 12 noon  
In the Old Stables  
See p 15

## Also in December & January . . .

### Advent Quiet Day

**10.15am start in church**  
Saturday 9th December  
See page 16 for details

### Bible Study

**10 am in the Stables**  
Thursday 14th December  
Thursday 11th January  
Thursday 25th January

### Christmas Coffee Morning

**10am to 11.30am**  
Saturday 2nd December  
Stalls: pottery, cards, crafts and  
books  
Raffles will be drawn.

### Beat the Blues Brunch

**Saturday 27th January**  
A chance to enjoy good,  
warming food with others  
£8 per person  
10.30am  
In the Old Stables  
See p 15

### Prayer Meetings

**10am every Wednesday**  
**Except 27 Dec and 3 Jan**  
**In church or at home**

Praying for:  
Family Activities Group  
Churchyard Team  
Flower Team

## In Brief

### Helpful passers-by

The tubs outside church are now planted with bulbs for the Spring and topped off with Winter pansies. The Summer plants lasted well into Autumn. So thank you to the many passers by who helped by watering the tubs - a big thank you for your help.

### The Flower Team

#### Correction

It has been pointed out to me that the statement in November Adel Bells, page 26, that Lawnswood Cemetery is ten acres is far from correct. Adel Churchyard is indeed 6 acres as was suggested, but Lawnswood Cemetery is in fact a gigantic 53 acres! Since we frequently walk our dog round that area, I should have realised it is far more than a mere 4 acres bigger than our own churchyard!

### Marjorie Cole

#### 100 Club Draw for October

1st	Jill Holloway	£80
2nd	Lucy Best-Shaw	£40
3rd	Beryl Stoker	£30

Congratulations!

### Don't pay yet!

Subscriptions for Adel Bells are not due until February. The magazine for that month will tell you how to go about paying for them.



However, I must warn you of a necessary price rise. Those of you who live in the parish and have paid £5 per year will be asked to pay £6 per year. The price of £5 has remained for more years than I care to remember, even as the number of pages steadily increased. I hope you will all feel that you are getting value for money.

If you are receiving the magazine through the post, the price of that will also increase. A year's supply will cost you £14. Increased postal charges have been taken into account.

If you are in the habit of picking up a copy in church, the price of one copy will be 70p, apart from in June when copies are distributed free of charge to all houses in the parish.

Thank you for your support of the church in this way.

**Marjorie Cole**

## Praying for . . .

*This month we invite you to pray for:-*

### Family Activities Group

**I**t was lovely to be involved with this year's Harvest Family Event which Karen Baylis so cheerfully co-ordinated. There was a real sense of team work and camaraderie in the planning of the afternoon and also in setting up and clearing away on the day.

The afternoon itself was enjoyed by the children and their parents. Some highlights were our Prayer Thank You tree which was made using pressed dried leaves, googly eyes and prayers written and stuck on by the children; the lollipop stick tractors and also the harvest dough sheaf which was skilfully supervised and baked by Jill Holloway (to be brought back into church for the Sunday service).

I particularly appreciated the short service of thanks led by Reverend Alison in church following the craft activities. This, together with the refreshments afterwards, rounded off the afternoon beautifully. It was super to hear the children singing a few simple harvest songs in church and to join together with parents and children for prayer.

**Ruth Cunliffe**

### The Flower Arrangers

To arrange flowers in church is both a pleasure and a privilege. The weekly flowers are organised by Lucinda Millford who puts a rota in church; anyone wishing to put flowers in church, to mark an anniversary perhaps, can add their name.

I look after the Festivals, asking who will be available to do the arrangements and making sure that everything is ready for them in church. Hilary Taylor is a great help here and we work very well together. We are both grateful for younger arms to carry bulky items from the Stables up to the church.

A group of ladies take pride in making the church look beautiful for Easter, Patronal, Harvest and Christmas time. They are not all members of our congregation, but they give generously of their time to come and work as a team in our beautiful, historic church. We cannot thank them sufficiently.

As you sit in church at the Carol Service, or on Christmas morning do look around and say a quiet thank you for the decorations but also remember that what goes up must come down!! We will be back and you won't know we were there.

**Edith Cheesbrough**



## Churchyard Team

**V**olunteering in Adel Churchyard is an opportunity to help maintain and enhance the natural beauty that surrounds our Church. For hundreds of years, this has been a burial ground and when working in the churchyard there is a feeling of the history and tradition that surrounds you. Hunting for 'lost or hidden' graves, often for overseas relatives working on their family trees in conjunction with Church historian Val Crompton, is interesting work.

Our 'Gods Acre' is actually six acres in size and presents various opportunities, such as creating the wild flower meadows, and challenges, such as tackling the ash die back that is blighting some of our most magnificent trees.

The Churchyard Team is made up of people with different skills and knowledge. We learn from other people about the birds, trees, wild flowers, butterflies, moths, and even fungi that live in our churchyard. Helping encourage, manage and support an ecological system that is rare in an urban setting is personally satisfying. The Churchyard Team, through discussion and working together, try to balance the needs of maintaining an active, working churchyard with regular weddings and funerals. We encourage bio-diversity,



thus providing habitats for the diverse flora and fauna, and we create spaces that allow people moments of solitude and peace or opportunities to come together such as the Children's Area.

Each month volunteers come together to work on a Saturday morning in the churchyard, in gatherings known as "Rake, Cake, and Chat". These are sociable events with volunteers providing tasty home made cake and a warm drink which is greatly appreciated after a few hours work. Each season brings different tasks that need completing. For example in Autumn clearing leaves from areas where Spring bulbs will grow ensures our fantastic displays of Snowdrops, Crocus and Daffodils. Anyone can come along, with gardening gloves and hand tools. To get involved keep an eye on Church social media or notices for times and dates in 2024.

**Andrew Briggs**

## Penny's Ponders

Hi Everyone!

Christmas again! Love it! Lots of time with family and friends! I shall enjoy the smells, and remember with great fondness the times when I could join in eating some of the lovely food. Never mind, after all, there's more to Christmas than eating! I am just very grateful to be feeling so much better and able to enjoy what I can.

It is a time of the year when we particularly think about other people. Not only do we think about gifts for our loved ones, preparation of festive food and occasions, but it is also a time to think of those less fortunate than ourselves. Appeals for help are everywhere: homelessness, hunger, flooding, earthquakes, fires, war zones, abuse, cruelty to people, children and animals, the lost, lonely and deprived – the list of need seems to be never-ending and they all need a Christmas gift from us. We all have to choose our giving, but part of this giving can be prayers for the misfortunes of our planet and those we share it with.

I hear your carols and songs about peace on earth, goodwill to everyone, hope, light and joy and they make me feel very happy. We must share these gifts, and do our best to make life better for everyone. Sadly nothing happens overnight, but if we persevere together we can make a difference.

We have been given hope of better times to come, but we don't know when it will happen, so we must keep up our efforts to love our neighbours and help wherever we can – if we can only give comfort, love and a cup of kindness, we can all make a difference.

At Christmas we remember that God sent Jesus into the world to teach us to love one another as He loves us. He also sent Him to proclaim the gospel – the good news – that however difficult the world around us becomes, we have the hope he has set before us; when things look so bad that we can't cope, we must remember His promise that He will be with us until the end of the age. With the return of Christ, God's will, as we pray in the Lord's Prayer, will be done on earth as it is in heaven; sorrow will be washed away, wars will cease and hunger will be no more.

So on this very happy note I, and my family, hope that you have a very blessed time together. Come and join in the Christmas worship at church, meet old friends and make new ones. Come and see the wonderful work our Junior Church does to enhance the church's celebrations, the beautiful decorations, and come and sing your hearts out for the joy and wonder of our great blessing: Christ's birth. With woof and licks,  
**Penny xxx**

# Environmental News

## Big Eco Quiz Of The Year!

We are now in December and this year we have seen our planet facing many challenges. Having reflected on what I have been writing about, I have made a quiz to recap on 2023.

1) I started the New Year discussing the human and environmental cost of bringing us cheap and readily available fashion from the likes of Shein and Primark. What percentage of the global emissions is the fashion industry estimated to release?

- A) 5%      B) 10%  
C) 15%      D) 20%

2) To meet consumer demand for choice in supermarkets, food production is on an industrial scale. How much of the UK's greenhouse gas emissions come from animal farming?

- A) 12%      B) 22%  
C) 32%      D) 42%

3) In his former role as the Prince of Wales, what initiative did the now King Charles set up in 2020 to highlight global climate change and sustainability in the private sector?

- A) Terra Firma B) Magna Carta  
C) Terra Carta D) Round Table

4) We live on a planet covered by water - up until June, how much of the world's sea was protected from human interference?

- A) 1%      B) 5%  
C) 7%      D) 10%

5) As it's getting colder outside, we all love to cosy in and watch a bit of telly. 6bn hours of Netflix is watched globally in 28 days. This amounts to the same emissions as if a car were to drive to where?

- A) The Moon      B) Mars  
C) Jupiter      D) Saturn

6) This summer saw our garden come alive from last year's attempt at sowing wildflowers. Rewilding your garden provides which benefit?

- A) Attracts pollinators such as bees  
B) Colourful wildflowers  
C) Increased biodiversity  
D) All of the above

7) In a little over a century, we have airlines that can take us all over the world. New transport brings new holiday destinations, and friends and family closer together. But out of these, which has the lowest carbon footprint?

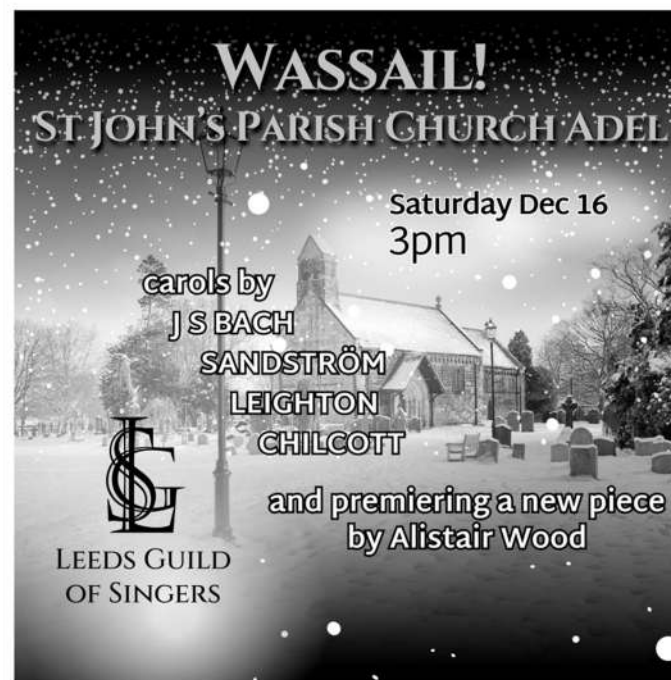
- A) Aeroplanes      B) Trains  
C) Cars      D) Bus

8) Finally, this year, the summer months have been the hottest on record. How much has the average global temperature increased since records were kept in 1880s?

- A) 0.5%      B) 1%  
C) 2%      D) 3%

**Thang Tang**

Answers on page 38



**TICKETS  
ON THE DOOR  
£15**

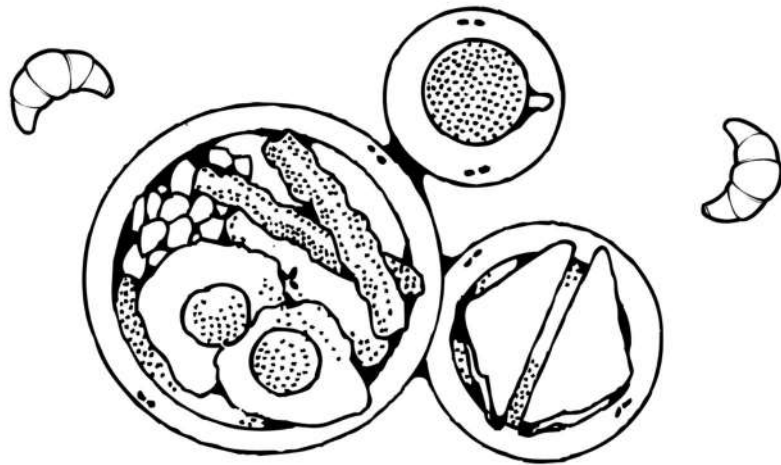
**UNDER 18S AND  
STUDENTS FREE**

**INCLUDING  
MULLED WINE  
AND MINCE PIES**

We're delighted that the Leeds Guild of Singers chamber choir will hold their flagship Christmas concert at Adel Parish Church again this year. Come and listen to seasonal choral favourites and less well-known works in the intimate setting of our church.

Pieces will include familiar carols like "In Dulci Jubilo", "In the Bleak Midwinter" and "Carol of the Bells", as well as Christmas music that you may never have heard before, from the 16th century to the present day. Plus a chance to hear a brand-new composition - "Wassail" by Alistair Wood, one of the choir members. All sung "a capella" by the ensemble that is celebrating its 75th anniversary this year and was recently rated "the best amateur choir in Leeds". Not to be missed!

# BEAT THE BLUES BRUNCH



**Saturday 27th January**

**10.30am**

**in the Old Stables**

**£8 per person**

Bacon, sausages, hash browns, baked beans,  
scrambled eggs, black pudding, toast and croissants  
with jam and marmalade

Please email [adelparishchurch@gmail.com](mailto:adelparishchurch@gmail.com) if you would like  
to reserve or speak to one of the Social Committee  
by 21st January.

## Making Space



### An Advent quiet day

Using our church and churchyard, pictures, activities, words and music  
we will think about how we can make space for Christ.

### Saturday 9th December – Adel Church and Stables

- 10.15 – 11.00** 'Advent Stations' a prayer walk around special places in our churchyard. (Meet at church)
- 11.00 – 11.30** Hot drinks available (Church)
- 11.30 – 12.30** Stopping to make space – using pictures and music. (Church)
- 12.30 – 1.15** Lunch in the Stables. Bring a sandwich, drinks/cakes provided.
- 1.15 – 2.15** Using crafts to think about making space. (Stables)
- 2.15 – 2.30** Hot drinks available (Stables)
- 2.30 – 3.30** Putting it into words – poems, prayers and silence.
- 3.30** Short closing worship.

Choose the sessions which suit you, or come  
for the whole day.



# Christmas Jumper Day

**7 December: Christmas Jumper Day, but you can take part any day you want!**

Christmas Jumper Day is Save the Children's annual event which raises money for the children who need it most. Every December, millions of people across the United Kingdom (and beyond!) put on festive knitwear at their workplace, school or with friends and make a donation to help give children the magical future they deserve.

Christmas Jumper Day has raised over £35 million for children in the UK and around the world since it began in 2012! In 2022, over 2 million school children and 24,000 workplaces took part in Christmas Jumper Day.

Can you rise to the challenge? So many children are suffering right now and need the help that charities such as Save the Children can offer. Have a look at their website and sign up to offer your help.  
[www.savethechildren.org.uk](http://www.savethechildren.org.uk)

Read 9-year-old Viktoriya's story to find out how Save the Children has helped her get through difficult times.

Viktoriya is a Ukrainian and she was injured by a bomb. Many of her friends had to leave their homes because it wasn't safe to stay.



To help kids in Ukraine, Save the Children joined forces with a team called Your Way. Together they made spaces where kids can talk through their problems and get help from grown-ups.

And that's where Viktoriya met Parker. Parker is a Golden Retriever; he is a 'Therapy Dog' and he's amazing.

Parker can sense when Viktoriya is stressed. He helps her feel more calm and patient. And - this is really important - he helps her feel in the moment, like every 9-year-old should.

*"The way we play feels like love from Parker,"* says Viktoriya. And we need as much of that as we can get, right?

# QE Corner

Here it is again..... QE (Quite Enlightening) Corner.

'Montgomery', Ernest Hemingway's version of a Martini, has a 15-to-1 ratio of gin to vermouth. It is named after the general Bernard Montgomery who was said to be so cautious that he didn't go into battle unless his troops outnumbered the enemy 15 to 1.

In 2004, the USA delivered \$12 billion in one hundred dollar bills weighing 363 tonnes to Iraq. Nobody knows where it has gone.

15% of Americans own no books, and 20% own fewer than 10.

A family in Michigan has passed a fruit cake down the generations. It was originally baked in 1878.

For every human on the earth, there are 16,000 mosquitos.

Three million years ago, otters were the size of lions.

Cameroon is the only country named after a crustacean. It comes from the Portuguese for prawns.

Dunce caps were invented in 13th century Scotland by John Duns Scotus, and were originally worn by intelligent people to funnel clever thoughts through the point of the hat.

A LOOPHOLE originally meant a narrow slit through which a defender could shoot attackers.

In the 1930s, there were plans to build an airport on top of Kings' Cross station in London.

British dung beetles are estimated to be worth £40m a year to the cattle industry for clearing up cow pats.

The currency in Botswana is the PULA. Pula means 'rain' or 'blessings'. Since most of Botswana is arid, rain is considered precious.

It is more likely to rain on Saturday than on weekdays. Pollution builds up over the course of the week and seeds clouds.

Thomas Coke (1754-1842) spent six years travelling Europe and sent treasures back to his estate using acorns as packing material. The resulting oak trees produce leaves that are now fed to London Zoo's giraffes.

Older people who eat cheese have higher cognitive functioning than those who do not.

*Please note these "Facts(?)" are all from the internet, so don't blame me if they are not correct!*

**Trevor Cole**

# Val Writes . . .

## Why I love Midwinter

Childlike, I long for flakes of snow on this dark, winter's night - to find afresh how each snowfall turns landscapes into quite uncluttered views; how snow softens sounds, creates stark scenes of black and white.

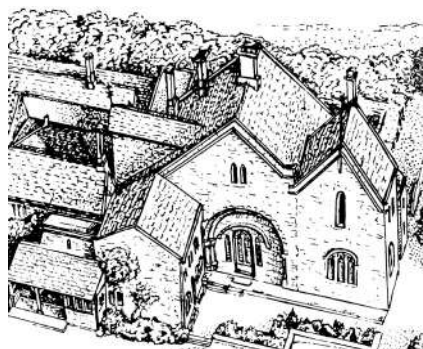
By winter solstice we all know that days will slowly lengthen. Snow clears the air, we share midwinter's magic and recall, 'When icicles hang by the wall'... And nightly sings the staring owl.'

I remember how, in Adel Woods, we used to look for tracks; or skate outdoors, on Yeadon Tarn; see bleak moors and farms outspread like Bruegel's painting long ago - 'Returning Hunters in the Snow'. That's why I love midwinter so.

Val Crompton Dec 2023



1565 Pieter Bruegel the Elder



**The 1152 Club usually meets once a month on Tuesdays at 10am - 11.15am, during term-time. at Abbey House Museum**

Free parking near Abbey House.

This a free, friendly **local history group** for adults aged 55+

Includes a hot drink.

No booking is needed.

**Patrick Bourne.** Kirkstall Abbey, Leeds LS5 3EH

Kirkstall.abbey@leeds.gov.uk  
For details, **0113 378 4079**

or contact Val Crompton

19 Dec 2023 Pat Bourne  
**25 Fun Christmas Facts**  
(Followed by Christmas Meal)

9 Jan 2024 Pat Bourne  
**Stories of Sustainability**

6 Feb 2024 Kitty Ross  
**The Power of Persuasion**

# My Day in Cups of Coffee

## Jenny. How do you like to start your day?

I start with a scalding hot shower; it sets me up for the day. Dressed in my towel, and hoping the postman isn't early, I go downstairs and make a very hot black coffee. After breakfast I make another one and drink it at the dining table, looking into the garden, at present marvelling at the daily colour changes the autumn brings.

## And where are you waking up?

I'm waking in the house I moved into at 21 with my late husband Tony, in 1967. There's always room for visitors. One day someone commented that I had a revolving door on my house, always people coming and going. That's absolutely true, and the coffee maker and the kettle are always at the ready.

## Tell us a bit about your work

Although on paper I'm retired, I have many interests. I'm always involved in fund-raising projects, I do a lot of writing, short stories, articles etc. I have a cup of coffee at the side of me while I work, often black instant, as this is the one I sometimes forget to drink when I am absorbed.

## Kettle's on, what do you fancy?

My personal preference is black coffee, made in the 'Pod' machine, decaf so I don't feel guilty about having a second cup, which I might drink whilst tackling the Times crossword.

## Do you like to take a break with a cuppa?

Yes, if friends come round, that's always a good excuse for yet another cup, but otherwise I tend to work on, sipping as I go, whilst it's still very hot.

## How did you end up doing what you do now?

When I first retired, I did a lot, but not so much now. Doing things on Zoom means I can keep up my coffee intake whilst participating.

## What is your working day?

After the housework, I work on my computer, sometimes breaking off to do some cooking. I often have a pan of soup on the go, especially "Fridge-bottom soup", made on a Monday with veg left from the weekend. In the afternoon I break the coffee habit, and have a good strong 'builder's tea'. If I'm drinking it at home, I have a "God's Own County" Yorkshire ½ pint mug...just perfect.

## Who would you like to share a cuppa with?

If this is a fantasy coffee date, Victoria Wood, the most amazingly funny and clever writer, who died far too young but her humour lives on. I guess with her this would be the coffee I forget to drink as I'd be so absorbed.

Jenny Jones

# Nature Notes

The best known bird of prey in the Leeds area must be the Red Kite which since its introduction in 1999 has flourished here. I see them every day and hear their calls, but strangely I never see them feed. They find their food on the ground and I would really like to know what our local kites eat and where they find it.



In my early days as a birdwatcher the Kestrel would have been the best known, and probably the only, raptor that most people saw in Leeds, but it is now quite scarce. Kestrels are falcons and their hunting method consists of a prolonged hovering flight followed by a steep dive to catch an unsuspecting small mammal, although the only time I was near enough to see what the Kestrel had actually caught, it was a Blue Tit. I suspect that the current decline of the Kestrel is due to a fall in the numbers of small mammals.

The Peregrine is the biggest and fastest falcon and used to nest on rural and coastal cliffs. However, in several different areas they have taken to nesting on tall buildings that are similar in some ways to their more natural sites. In Leeds a pair has bred for some years on a Leeds University building, and odd birds turn up occasionally at Rodley Nature Reserve. Two other falcons that are very seldom seen in Leeds: the Hobby is very speedy raptor that can take Swifts and Swallows in flight and is a very occasional visitor, as is the Merlin, a nester on heather moors where it probably eats meadow pipits and other small birds during the breeding season but turns up here occasionally in autumn when migrating to winter quarters on coastal marshes.

Sparrowhawks hunt mainly other birds: males take small birds and the bigger females feed on larger species. Many years ago they were badly hit by the ingestion of pesticides that had accumulated in the bodies of the birds they had eaten. This caused their eggshells to thin which prevented many from breeding successfully. When the pesticides were withdrawn numbers increased for a few years but I seldom see them now, probably because there are so few small birds.

**Peter Larner**

# Nativity Scenes

Every Christmas we learn about Jesus' birth in the little town of Bethlehem. We know he was born in the poverty of a stable fit only for animals, and we remind ourselves of this by putting out a nativity scene of our own. But did you know that the first ever nativity scene was created by St Francis of Assisi?



He had made a trip to the Holy Land in 1221 to visit Jesus' traditional birthplace. Deeply moved by visiting the site where God became fully human, he wanted others to enjoy the same profoundly spiritual experience. But by 1223 there was conflict in the Holy Land and he decided to do the next best thing - bring Bethlehem to the pilgrims.

He did this on Christmas Eve 1223, by creating the first nativity in the Italian city of Greccio. With the help of a local nobleman, Francis celebrated the birth of Jesus in a cave outside the town. The liturgy featured a hay-filled manger in front of a temporary altar, and as Francis preached, the nobleman arranged to have an ox and a donkey stand at the altar as well.

The Franciscans quickly spread the practice of creating nativity scenes with live animals and actors. Living scenes remained popular, but the tradition of static nativities spread to other regions around the world.

As you may have seen in Adel Church last year on our Advent Activity Day, there are many different versions of a nativity set, many made from olive wood, like the statues of the holy family in our church, kindly donated by Liz and John Williams. But what they don't reflect is the real poverty into which Jesus was born. Bethlehem was one of the poorest and most deprived parts of the world. It is easy to understand why Jesus showed such compassion and love for the poor and the sick people he met during his ministry on earth — he not only understood their situation, he had grown up with them.

We will be singing fondly about the place of Jesus' birth during Christmastide, and remembering it as we put up our nativity sets. Setting up a nativity scene not only allows us to remember and celebrate the drama of Jesus' birth but also the saint so enraptured with that drama that he brought it to life.

**Marjorie Cole**

# Words from Joyce Hill

## Ambrose, Bishop of Milan

Ambrose was born in the Roman city of Augusta Treverorum (modern Trier), c. 339. On the religious front, things were changing in a major way. In 312 the Emperor Constantine had issued an edict so Christianity was able to be openly practised and, with the support of the emperor, the church was then integrated into Roman society. This led to Theodosius' (Emperor 379-95) decree stating Christianity, as defined in the Nicene Creed, was henceforth the religion of the Empire. This Creed had its beginnings at the Council of Nicaea in 325, called by Constantine to settle various doctrinal matters, chief amongst which was whether Christ was human, divine, or fully both. The Council decided on 'fully both'. The resulting Creed asserted this orthodox belief and attacked Arians, who argued that Christ's nature was human. However, this vigorously polemical Nicene Creed was modified and developed under Theodosius, and that's the version we use today. Ambrose's life spanned this extraordinary period of Christian history.

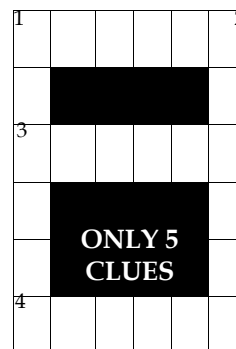
Ambrose was well-educated, as one might expect for someone of his class, and in 372 was made Governor of the Province of Liguria and Emilia, its capital being Mediolanum (modern Milan). In 374 the Arian bishop died

and the local Arians pressed for an Arian successor. Ambrose, as Governor, went to the church where the election was being held to prevent serious trouble, and was spontaneously acclaimed bishop. He was already well-known to be Nicene in his beliefs, but he was not yet baptized or trained in theology and felt unworthy, so he fled to a colleague's house and hid. After receiving a letter from the Emperor Gratian, he was baptized, ordained and consecrated within a week. This was the first time that a high imperial official had become a bishop.

Ambrose, as bishop, lived a very ascetic life, giving away his money and land. Yet his previous life equipped him to influence people of great standing, including successive emperors. He also fought strongly against Arianism, believing that the Empire needed unity of doctrine. His own writings contributed to the development of theology, which was still very much being debated and shaped at this time, and he was noted as a writer of hymns. He also had a significant influence on Augustine of Hippo, whom he helped to convert to Christianity.

His feast-day, on 7 December, is not his death-day, as it usually is for saints, but the date of his consecration as Bishop of Milan in 374. He died in office on 4 April 397.

# Puzzles



## Across

- Area within locality: Buckingham for example
- Entertained in the morning, employed afterwards
- Medical assessment has one probing temperature & madness

## Down

- Mercury, say, element at outset brought into factory
- Last to finish cure, getting rid of cold

## CONSONANT HUNT

Twelve musical instruments have had their consonants removed; can you put them all back in their proper places?

Use each of the given letters once only.

B B C C C C C C D G H H K L L L L L L  
M M M N N N N N N N N N N N P P P R  
R R R R S S S T T T T V X

1 \_ A \_ \_ O \_ I \_ A

7 \_ I O \_ I \_

2 \_ A \_ \_ O U \_ I \_ E

8 \_ \_ A \_ I \_ E \_

3 \_ I A \_ O

9 \_ A \_ \_ O O \_

4 \_ A \_ O \_ \_ O \_ E

10 \_ U I \_ A \_

5 \_ O \_ \_ E \_ \_ I \_ A

11 \_ A \_ \_ O \_ I \_

6 U \_ U \_ E \_ E

12 \_ I \_ \_ O \_ O

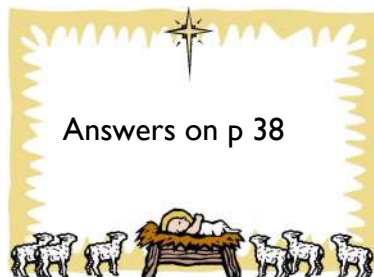
Solutions on p 38

# Christmas Quiz

## 12 Days of Christmas



1. According to the song, what gift was brought on the fourth day of Christmas?
2. When was the first Nativity scene invented?
3. Who invented the Nativity Scene?
4. Which King was on the throne when Father Christmas first appeared in the UK?
5. Who is Santa Claus named after?
6. Why do we have 12 days of Christmas?
7. Who invented the Christmas tree?
8. How many Christmas trees are grown in Europe?
9. Why is Christmas Day on 25 December?
10. What names have been given to the Magi and from where did they come?
11. Where in the Bible is the story of the birth of Christ?
12. Who told Joseph to call their baby 'Jesus'?



# The Story behind the Grave

**What possible connection could there be between one of Britain's most infamous serial killers, and Adel?**

I am sure many of you will be familiar with the story of Mary Ann Cotton, (1832 — 1873, Durham county), a nurse and housekeeper who was believed to be Britain's most prolific female serial killer. She allegedly poisoned up to 21 people, including several of her own children, her own mother, and a number of her husbands! In 1872, a post mortem examination of one of Mary's step-children revealed the presence of arsenic. Mary Ann Cotton was arrested and charged with his murder. Her trial took place in March 1873, when she was convicted and sentenced to death. Later that month, Mary Ann Cotton was hanged. She was regarded as Britain's deadliest killer until the discovery of Dr Harold Shipman's crimes in 1998.

But what is the link between Mary Ann Cotton and Adel? Having worked in policing for over 27 years, I do enjoy a happy ending and so was delighted to discover that the man responsible for the downfall of Cotton is in fact buried in Lawnswood Cemetery. Dr Thomas Scattergood, born in Huddersfield in 1826, studied medicine at Leeds General Infirmary, was a qualified surgeon and general practitioner. However, his main



**Dr Scattergood**

interest was forensic medicine and toxicology, and in particular, the study of poisons. After Mary Ann's arrest in 1872, Scattergood was involved in the exhumation and examination of a number of others who were suspected to have died at the hand of Mary Ann Cotton. He gave evidence at her trial and was able to counter the defence's claims that the arsenic had been inhaled or ingested by other means. It was Thomas Scattergood's evidence which led to the conviction and execution of Mary Ann Cotton.

If you would like to visit Dr Scattergood and congratulate him on his contribution to forensic medicine, you will find him in the Victorian section of Lawnswood Cemetery. if you would like to know exactly where he is, please contact the editor.

**Caz Vee**



# In Your Garden

*"The color of springtime is in the flowers, the color of winter is in the imagination."*

— **Terri Guillemets**

In the imagination is most assuredly the best place to embark upon your gardening during December. With very short days coupled with some dubious and unpredictable weather it is the time to enjoy the glories of the cerebral garden. So sit back and allow the weather to do its worst, whilst you recall all the gems from the last year, all the gaps that need filling and remember the plants that may have succumbed during the extremes of heat, drought and flood over this past. Then there is the leisurely deliberation over what to do about it all! Take your time. It could be weeks before you can get outside again! Browse online or in the catalogues for those desirable perennials, for those seeds and plug plants, or even those summer and autumn flowering bulbs. You can buy them all later. If it is trees or hedging plants you need then they can often be purchased and despatched straight away. They are mostly dormant during the winter and can be transplanted in bare root form, which is much cheaper than pot grown equivalents. You will, of course, have to brave the outdoors and plant them soon after they arrive!

If you get an opportunity for some physical activity rather than cerebral activity, but still want to stay warm

and dry, then it's a good time to clean and sharpen all those frequently used tools. Secateurs, edging shears, lawnmower blades and loppers will all benefit. A sharpening stone will do for most blades, with a drop of oil where beneficial.

If you really want to get out into your garden then how about putting out food for the birds. With such short days our birds need to take advantage of all of the available daylight to feed as quickly and efficiently as they can. As our winter progresses, their natural food supplies inevitably diminish so any supplements will be gratefully and greedily received. Keep your eye open for those regular winter visitors from Scandinavia: the redwing and the fieldfare. Perhaps we will be blessed by an irruption of waxwings. At the time of writing large numbers have arrived in Scotland and along the east coast and they typically head south and west chasing the berries. Keep your eyes peeled for this stunning bird.

Do try to keep your feeders clean. A quick wash before you fill up will help to limit the spread of any unwanted germs or bacteria.

**George Turnbull**

enquiries@adelgardencare.co.uk  
www.adelgardencare.co.uk

# Hope Pastures

How many times have you driven down the ring road, seen the Hope Pastures sign and our horses in the fields and thought, "I must call in one day"? It's amazing how many of our first-time visitors say they have no idea why they haven't called in earlier. If you haven't been to see us, we're keen to know.... what's keeping you?

Transcending the incessant noise of cars speeding along the busy road is a beautiful, gentle welfare sanctuary for horses, ponies, and donkeys. We are open to the public from Tuesday to Sunday, 10 a.m. to 3 p.m., and we have free car parking on site; there is no charge to visit us.

Immediately you step out of your car at Hope Pastures, you are immersed in an atmosphere of gentleness, goodwill, and compassion. Beyond the care of our animals, our warm welcome extends to our visitors. We have a Visitor Centre, staffed by volunteers, open between 11 a.m. and 2 p.m., where you can treat yourself to a toasted teacake and a cup of coffee! We have a Christmas pop-up shop with Christmas cards and gifts, which opens on November 18th. Proceeds from all our sales on-site go towards looking after the real stars of the show, the equines!

Over the summer, we have been at capacity with over 30 horses, ponies,

and donkeys on site. As winter approaches, those who are well enough will go out to foster or loan homes, leaving us with around 25 to care for. Some are too old, poorly, or behaviorally vulnerable to be rehomed; some we are nursing back to health and they will leave us once they have recovered. Hope Pastures ponies will always have a home with us; we are a safety net should the loan home fall through for any reason.

The equines that live with us come from various backgrounds; some are abandoned, some are cruelty cases, and some are with us because their owners became ill and can no longer care for them. We have a wide range of ages, from little Buddy, who was brought to us at six weeks old, to our elderly donkeys, amongst which are Nosey and Banjo, who still manage to charge around the fields, eeyoring and kicking up a fuss if it rains!

We are a small site and although the ground is uneven in places, it is wheelchair accessible. Often, the places on your doorstep are the places you visit the last. I can assure you that if you travel from Adel to Weetwood Lane and turn right into Hope Pastures, you'll find yourself saying, "Now, why haven't we been here before?" We look forward to welcoming you!

**Amanda Searle**

# OPAL Activities

As the year begins to draw to an end, we at OPAL are looking forward to the festive season and the beginning of 2024. So all our staff and wonderful volunteers can enjoy a festive break with family and friends OPAL will be closed from the end of the day Friday 22<sup>nd</sup> December 2023 and will reopen on the 2<sup>nd</sup> January 2024, although we will be hosting a Christmas Eve meal on the Sunday for some of our members. This will allow us all to recharge our batteries ready to kickstart the new year.

Before we finish we will be busy running all our groups such as our very popular craft club which meets every other Wednesday morning; the last one before Christmas will be on 13<sup>th</sup> December. Members can come along and help on one of our existing craft projects or bring along any of their own WIPs (works in progress) and enjoy a friendly chat while crafting the morning away.

Our last shopping trip of 2023 to Pudsey Owlcoats will be on 21<sup>st</sup> December and thanks to the fundraising by BW Legal we are able offer this for free to our members. Members are picked up from home in an accessible minibus, taken to Pudsey and then dropped back home with their shopping. These trips offer members the chance to shop without worrying about getting their bags home.

The next Hearing Aid clinic will be on 26<sup>th</sup> January 2024 in the afternoon and has proved to be extremely popular previously. This is a drop in service, batteries and tubing can be replaced: please bring along the NHS card and we will be happy to help.

One of the new things 2024 will see at OPAL is a second Memory Support Group (we already hold one on Tuesdays and there is a waiting list already for the new session). This will start on Monday 15<sup>th</sup> January in the afternoon. This group aims to support both the person with memory issues and their carer. If you think this may be of help to you or to someone you know please call us on 01132619103 and ask to speak to Sally-Anne.

We would like to take this opportunity to thank our fantastic volunteers, without whom we would not be able to offer such a wide range of activities to our members and we would like to wish all our members a very Merry Christmas and a happy and a peaceful New Year and we look forward to seeing you all in 2024.

If you would like further information, please contact us on 0113 2619103, email [admin@opal-project.org.uk](mailto:admin@opal-project.org.uk) or call in to see us at the Welcome In Community Centre (55 Bedford Drive, LS16 6DJ)

**Shelley Clark**

# Adel Players' Review

## Going Straight by Richard Harris - – Friday 20 October

This production was well worth the wait. Scheduled for 2020 but impacted by Covid, it was finally ready for production in October 2023.

Directed by Beth Duce, with all the elements of a classic plot unravelling it held us captivated to the very end.

Whilst storm Babet was raging outside, we were transported to Costa del Crime in sunny Spain, the action of the play taking place in September 2004. Back in the good old, bad old days, Mickey and Ray were East End villains. Today, Mickey is living a comfortable life in Spain with his younger, second wife Francine whilst Ray, married to sharp-tongued Brenda, is living a less lucrative life back in Britain. After two years without any contact, Mickey invites Ray and Brenda over to Spain for a visit and Ray is delighted, but Brenda is suspicious of Mickey's true motives. She is well aware of what and who he is. Ray, however, is more forgiving of his old pal, but to add to the mix, Polly, a young researcher working on a movie, introduces further tension and, as the stories of the men's past are told, suspicions increase until finally the truth is revealed...

The set appeared to be simple –

set in one room, with action offstage involving a flower delivery lady. The modern technology seemed ultra modern for 2004, but I guess that villains like Mickey needed their own protection.

The 5 main protagonists all had their part to play, along with the flower delivery lady, who helped develop the unsavoury character of Mickey. The casting was superb - and the layers of character were steadily built in the first half to reveal a complex situation. Polly, in particular was very convincing and her change of role to being a detective was superb. The real strength of the performance was from the wily women - who had accepted their men, Brenda for what he was or Francine for what he had given her in terms of money, but Polly and Brenda also worked together to ensure justice was served.

The character build up and script were excellent and I am delighted to note that the next Adel play is also written by Richard Harris. This is called 'Party Piece' and runs from **Weds 17 – Sat 20 January**. It is described as a comedy – and certainly one to get tickets for!

**Donna Shoemith-Evans  
and Ann Lightman**

# York Gate Update

**Let me take you back in time to 1951....**

Since purchasing York Gate in the summer of 1951, the Spencers had been spending “all possible time” there, sweeping out the stables, barns, and lofts of the old farm buildings, clearing the overgrown sea of rough grass and brambles, and supervising the property alterations to the house. An old lilac tree had been dug up at the corner of the house, an apple tree sawn down by the greenhouse wall, and the hedge between the front garden and the orchard grubbed up. A big ash tree by the gate had also been felled. Fred had found some stone flags in the old farm cottage which he planned to reuse for a garden path, whilst Sybil was at York Gate most days as well, planting bulbs and wallflowers and planning her garden.

On Christmas morning 1951 Fred and Robin went to Adel Church for the 7.45am service before returning home for breakfast and the opening of presents, which included “a large quantity of stationery die-stamped York Gate” for Sybil. After breakfast Fred went for a ride on his horse, Emperor, and noted that “it was a very pleasant morning with even a streak or two of sunshine and I enjoyed it very much.” The rest of the day was spent with family, with turkey for tea, followed by games of Canasta until nearly midnight!

Frederick Spencer died 60 years ago on 4<sup>th</sup> December 1963. His journals, written from the outbreak of war in 1939 until 1963, are held by the Brotherton Gallery at Leeds University. It is in these records that this description of a family Christmas over 70 years ago was found.

Family, in all its many aspects, remains at the heart of everything we are. And as Christmas 2023 draws nigh, our loved ones, near and far, past and present, will be in our thoughts. May I take this opportunity on behalf of the York Gate family to wish you all a peaceful and happy Christmas.

**Gillian Smith,**  
Heritage Volunteer.

*Although the garden and plant sales are now closed, the café and shop will remain open from 10am until 3.30pm on the usual opening days of Wednesday to Sunday until Saturday 23<sup>rd</sup> December. The shop has a range of Christmas gifts and cards.*

*After Christmas the shop will remain closed until the garden & plant sales reopen for our Snowdrop Event in February. The café usually remains open throughout the year, apart from the Christmas break. This year, however, the inside of the café is being redecorated so we are unsure which date in January we will reopen. Please keep your eye on our website, plus the signs outside, where we will let you know our café reopening date.*

**Sally Latchford**

# Recipe of the Month



## Mincemeat Streusel

### Ingredients

1 jar of mincemeat  
1 pack of shortcrust pastry

### For the Topping

75g/3oz butter  
75g/3oz self-raising flour  
40g/1½oz semolina  
40g/1½oz caster sugar

### To serve

Fresh cream or brandy butter

### Preparation

1. To make the topping, melt the butter and allow this to cool slightly.
2. Put the remaining ingredients into a bowl and pour the melted butter over. Mix together until the ingredients combine to form a dough. If time allows chill this mixture—this makes grating easier.
3. Preheat the oven to 200C/400F/Gas 6 (fan 180C) and grease a swiss roll tin or equivalent.

4. On a floured surface roll out the pastry (unless you have bought ready rolled) slightly larger than the prepared tin, then line the base and the sides of the tin with pastry.
  5. Trim the pastry level with the top edges of the tin and patch any gaps if necessary.
  6. Spread the mincemeat evenly over the pastry base.
  7. Fetch the topping out of the fridge and using a coarse grater, grate it over the mincemeat and spread evenly.
  8. Bake in the pre-heated oven for about 20-25 minutes, or until golden-brown.
  9. Cut into 16 slices, dust with icing sugar and serve warm with the cream or brandy butter.
- We made ours in a traybake tin, slightly smaller than a swiss roll tin, but it worked just as well.*

**Marjorie Cole**

# What's On

## Headingley Flower Club at Bramhope

**Friday 1st December**  
**'Sparkles & Laughter'**

Catherine Gledhill

7pm Guests are welcome at all meetings. A guest fee will be charged.  
Bramhope Village Hall,  
Old Lane, Bramhope. LS16 9AZ  
Contact Mrs Jean Money  
Tel 01924 468714



## Adel Gardeners' Club

**Monday 11th December**

**'An Addled Year'**

Martin Walker, in person

7.30pm at the Methodist Church

Martin's own take on the challenges and successes in the garden this year, with the audience invited to throw in their experiences, too.

<https://adelhort.chessck.co.uk/>

## Monday 8th January

**ZOOM into homes:**

**'Climate Change and our Gardens'**

This talk will cover insight on how to cope with the changes that are coming. Tips are given on how to nurture a healthier and more resilient garden.



## Leeds & District Association of The National Trust

**Tuesday 12th December**

**'Inn & Out at the Top'**

Neil Hanson

This laugh-a-minute talk tells of the quirks and foibles, highs and lows of his time running Britain's highest inn back in the 1970s and 1980s. Neil's account of grappling with all sorts of characters is guaranteed to keep you entertained. You may be buying a copy of one of his many books!

10.30am for coffee, followed by talk

Christmas Raffle

Association members £4

Non-members £5

Refreshments by donation



## Adel Players

**"Party Piece"**

**by Richard Harris**

**Wednesday to Saturday**

**17th to 20th January**

**7.30pm in Adel Memorial Hall**

Set in the back gardens of feuding neighbours, it is the night of Michael and Roma's fancy dress house-warming party. A string of hilarious disasters strikes.

Tickets at £10 may be booked by email at [boxoffice@adel-players.org.uk](mailto:boxoffice@adel-players.org.uk).

# Christmas at Crag House FARM

### CHRISTMAS CHEESE BOARD

Our own Cheesemonger has created 3 balanced cheese boards available in different sizes. Choose from The Beginners, The Deli-Man, The Yorkshire or create your own favourite selection with over 60 varieties to choose from. Visit our website to see the full range. Taking orders in the Farm Shop NOW for Christmas collection.



### CHRISTMAS AFTERNOON TEA

**£17.95** Per Person

Enjoy your Afternoon Tea with a Christmas twist. It comes with a selection of Sandwiches, Pastry, Cakes, Scone with Jam & Cream, unlimited Tea or Coffee (Prosecco extra). Pre-booking essential, for 2.15, 2.30 or 2.45pm



### CHRISTMAS SHOP

Visit our Christmas Shop for our largest ever selection of Christmas baubles and decorations.



### CHRISTMAS WREATHS FROM JUST £14

Handmade Christmas Wreaths for your home, made in our Garden Nurseries. Plus seasonal plants including Poinsettia and Cyclamen!



### CHRISTMAS TREES FOR CHARITY

On sale 24th November. Choose your top quality Nordmann Fir non-drop Christmas Tree! Cut or potted trees, in a range of sizes and prices.



*Wishing you a Happy 2024!*



Crag House Farm - the home of Caring For Life • (0113) 230 3618  
Otley Old Road, Cookridge, Leeds LS16 7NH • [www.craghousefarm.com](http://www.craghousefarm.com)



# Barry Anderson

Caroline and I would like to wish all readers of Adel Bells, and your families, a very Happy and peaceful Christmas and New Year.

## Moss

Slippery Moss is an ongoing problem which has no current solution. The Cleaner Neighbourhoods Team (CNT) do not have capacity or resources to remove moss on a large scale, and do not have a licence to spray or store the required chemicals. I believe other non-chemical solutions are not effective on large scale areas, and do not kill it.

## St. Helen's Lane

St. Helen's Lane from the junction of Otley Road to the junction with Adel Lane will be closed from 13<sup>th</sup> to 15<sup>th</sup> December. The diversion will be up/down Adel Lane using Church Lane to access Adel Lane and Otley Road.

## Golden acre car park

You may have read or heard about the Council's new proposals to charge for car parking at Golden Acre Park following the previous proposals being dropped last year. The consultation with residents and users of the car park has now ended and I will keep you advised of the outcome.

## Winter coats appeal

The Leeds Winter Coat Appeal aims to collect and redistribute donations of great quality, second-hand winter coats; over 6,500 were donated to families last year. It's a great way to help each other, good for the environment, and helps families who don't have to worry about the cost of coats. The final date for donations is Friday, 26<sup>th</sup> January. All coats will have been distributed by the end February 2024. The list of public donation points (incl opening times and addresses) can be found on the website [www.zerowasteleeds.org.uk/projects/leeds-winter-coat-appeal/](http://www.zerowasteleeds.org.uk/projects/leeds-winter-coat-appeal/)

## Leeds Bradford airport – update

The council received five Certificate of Lawful Existing Use or Development (CLEUD) applications from the airport earlier this month. The Chief Planning Officer has advised that the applications relate to whether certain aircraft movements are permitted at night. These applications involve a different decision-making process to planning permission. In these situations, local planning authorities have to adhere to regulations laid down by the Town and Country Planning Act 1990. This means that CLEUD applications, which seek to confirm that an existing use of land or operational development is lawful, are not automatically subject to

consultation or publication and are determined purely on relevant factual evidence assessed against a legal test.

“Comments on disturbance and possible impact on a surrounding area – which might typically be raised during a consultation cannot be taken into account when a decision on a CLEUD is being made. Due to significant public interest the council has decided to seek factual evidence relating to the specific operations at Leeds Bradford outlined in two of the applications. Submissions must relate to the period covered by the airport's evidence,

which is August 29, 2007, through to August 28, 2018. It is important to note that a call for evidence is not the same as a 'public consultation', as general comments, objections and opinions on issues such as planning merits are not being invited as they cannot be taken into account during the determination process.”

Cllr. Barry Anderson  
Adel & Wharfedale Ward  
Direct Dial 0113 3367742  
[www.barryanderson.org.uk](http://www.barryanderson.org.uk)  
Twitter @barryanderson19

# Billy Flynn

Hello everyone. Well, Christmas is almost upon us. It seems like only yesterday we were complaining about the wet end to Summer.

## Anti-social behaviour/policing

You will be aware of the murder of the young boy in Horsforth last month, yet another victim of senseless knife crime. Fortunately, we do not see much violent crime in this area but we do have a major problem with anti-social behaviour (ASB) and relatively low level but unacceptable criminality around Holt Park, Asda and the Holt Farm/Holtdales estates. It mainly consists of youths on 2- and 4-wheel vehicles ripping up the grass surface of Holt Park and speeding around residential roads in that location, and more recently some very unpleasant

and obscene graffiti drawn on the walls of buildings. The number of ginnels leading from Holt Rd to Farrar Lane give miscreants an easy escape route when the police arrive. I am delighted to say that the police have acknowledged the problem and thanks to our neighbourhood policing sergeant, have agreed to mount a special operation in the area. Operation Leodis, consisting of 3 Police Constables who are solely dedicated to the project and will not be moved to other duties. They have achieved some brilliant results and during their last deployment in LS14, there was a 76% decrease in reported crime in the area. The team is very experienced in tackling criminal and civil anti-social behaviour, and in innovative use of civil orders to reduce anti-social behaviour, including



different types of closure orders both in tower blocks and residential houses, along with civil injunctions and criminal behaviour orders on individuals. For example, anyone identified as misusing a bike/moped etc can be banned from riding one or having one anywhere in their home. I met the team on 9 November to discuss the project and was very impressed with their professionalism.

### Housing Developments

I have mentioned previously that we have just about reached saturation point with housing developments in Adel but plans (planning ref: 22/06370/FU) for 100 plus apartments on the old Weetwood Police Station site, have hit viability problems. On all new sites above a certain size, developers are required to provide a number of affordable homes commensurate to the scale of the development or an alternative depending on the viability of the project. This number is considerably higher in the more attractive locations like Adel. The applicants have indicated that the financial viability of the scheme is significantly constrained due to increases in construction costs caused by the increasing costs of materials like steel, chronic shortages of skilled labour, sustained rises in the cost of energy and a range of supply chain related difficulties. The homes here will be on a build-for-rent basis and the developers have offered a commuted sum of £700k to fund off-site affordable homes but this does

not meet the council criteria for affordable housing. The developers have submitted a Financial Viability Assessment to support the scheme. The conclusion is that the development is projected to make over a £3 million loss (Scheme revenue - £26.8M minus development costs - £29.9M). This Assessment is currently under consideration by the District Valuer so no conclusions can currently be drawn on viability issues and in particular whether departure from the affordable housing requirements is justified. Consequently, everything is on hold at present. I will let you know more when the position is clearer.

### Grants

I have mentioned in recent Adel Bells articles that I can fund local projects so long as some very simple security criteria are met. For example, I have just agreed to support the purchase of a community Christmas Tree in the ward so if you have any community projects you need help with, please do get in touch. The funding is not limited to this time of year, and I am happy to give you any advice you may need. If you would like further information on the issues above or anything else in the ward, please do get in touch.

Cllr. Billy Flynn

home - 0113 4694785,

mobile- 07810640282

Please support our advertisers and mention Adel Bells

### Environment Quiz

- 1 = B
- 2 = A
- 3 = C
- 4 = A
- 5 = D
- 6 = D
- 7 = B
- 8 = B

### Only 5 Clues

#### Across

- 1 PALACE
- 3. AMUSED
- 4. TRIAGE

#### Down

- 1. PLANET
- 2. ENDURE

### Consonant Hunt

- 1 HARMONICA
- 2 TAMBOURINE
- 3. PIANO
- 4. SAXOPHONE
- 5. CONCERTINA
- 6. UKULELE
- 7. VIOLIN
- 8. CLARINET
- 9. BASSOON
- 10. GUITAR
- 11. MANDOLIN
- 12. PICCOLO

### Christmas Quiz

- 1. Four calling birds
- 2. 1223
- 3. St Francis of Assisi
- 4. Henry VIII
- 5. Saint Nicholas
- 6. It is based on the Christian theology that marks 12 days between the birth of Christ and the arrival of the Magi.
- 7. German Lutherans in the 16th Century, when a tree was placed in the Cathedral of Strasbourg in 1539, under the leadership of the Protestant Reformer, Martin Bucer.
- 8. About 60 million
- 9. It is 9 months after the traditional date of the conception of Jesus on 25 March.
- 10. Melchior from Europe, Caspar from Arabia, and Balthazar from Africa
- 11. Matthew and Luke
- 12. An angel of the Lord



Ristorante  
**SORRISO**

## Family Run Italian Restaurant

429 Otley Rd,  
Adel, LS16 6AJ  
Tel: 2672671  
for reservations

View our menu on line at  
[www.sorrisoileeds.co.uk](http://www.sorrisoileeds.co.uk)

### Opening Hours

Monday-Thursday 12 – 2.30pm  
and 5 – 9pm  
Friday & Saturday 12 – 9.30pm  
Sunday 12 – 9pm

**Takeaway delivery available  
every day**

## Advertising

The magazine is published 10 times a  
year and goes out to 440 homes except  
for June when we circulate the whole  
parish  
(2800 homes)

Full page £140 per annum

Half page £80 per annum

Quarter page £50 per annum

+ £20 for alterations

For further information contact:

**Beryl Thompson**  
10 New Adel Gardens,  
Leeds LS16 6BD



0113 267 3875  
[beryl890@btinternet.com](mailto:beryl890@btinternet.com)



### Fun characters having great adventures written to promote:

- ✓ Being good friends
- ✓ Embracing differences
- ✓ Taking care
- ✓ Having lovely manners
- ✓ Learning who may keep them safe

### Join the Cones and enjoy the fun!

Available from all good bookshops and on  
line, "Meet the Cones" and "Cones Make  
New Friends" introduces the Cones, how  
they come alive and how they become  
friends. The Cones series of books is written  
to be fun to read while helping children learn  
to live with each other in the best

possible way but  
always with safety as  
their first priority.



[www.fisherkingpublishing.co.uk](http://www.fisherkingpublishing.co.uk)

Helping children learn to  
live and play within  
parameters based on  
moral and ethical values.

e: [chris@theconesbooks.com](mailto:chris@theconesbooks.com)  
m: 07841 436765

[www.theconesbooks.co.uk](http://www.theconesbooks.co.uk)

Companies and  
organisations supporting  
child safety, friendship and  
moral and ethical principles  
through The Cones series of  
books include:

**Ai Workwear**  
**Amey**  
**Approved Food**  
**Balfour Beatty**  
**BAM Nuttall**  
**Bion Energy**  
**Biz Vision**  
**Bradford College**  
**BV-TV**  
**Caddick Construction**  
**CityFibre**  
**Colas Ltd**  
**CSR Accreditation**  
**Curveblock**  
**Drax Power Group**  
**EKFB**  
**Enjoy Digital**  
**Environment Agency**  
**ENGIE**  
**Eurovia**  
**FusionBlu**  
**Grand Central Rail**  
**Genovate Power Solutions**  
**GXO Logistics**  
**Harworth Group**

*cont'd*



**Adel Wills Ltd**  
For Wills and Lasting Powers of Attorney

## Lasting Powers of Attorney and Wills

- Friendly and Professional Advice
- Home Visits
- Local Independent Business
- Fixed Fees

**Please call Jane Wintringham** BA (Hons) Law, MIPW  
on

07931 369813 or 0113 305 3604

email: [jane@adelwills.co.uk](mailto:jane@adelwills.co.uk)

[www.adelwills.co.uk](http://www.adelwills.co.uk)



A member of the Institute of Professional Willwriters  
This firm is compliant with the IPW Code of Practice



Highways Today  
Jaguar Cars  
Kamec UK  
Kier Group  
Leeds Cares  
Leeds Children's Hospital  
Leeds City College  
Leeds City Council  
Leeds Trinity University  
Mole Valley Asset Management  
Northern Powergrid  
NSPCC  
Persimmon Homes  
Q Parks  
Ringway  
Sevensun Agency  
The Business Desk  
Town Centre Securities  
Unity Club  
University of Bradford  
University of Leeds  
Verity Group Ltd  
Volker Rail  
West Yorkshire Consortium  
of Colleges



Books available from all  
good book stores and online

## ADEL WAR MEMORIAL ASSOCIATION Adel Sports and Social Club



**Archery, Badminton, Bowls, Cricket,  
Football, Hockey, Lacrosse, Snooker,  
Softball, Squash and Tennis are all  
played at Adel**

**Most sports have Junior Sections  
with fully qualified coaches**

**Social Membership just £15 per year**

**Adel Players produce 3 plays per year**

**Tickets can be obtained from  
[boxoffice@adel-players.org.uk](mailto:boxoffice@adel-players.org.uk)**



## Rooms available for Hire

**From the main hall for weddings and special  
events to smaller rooms for office training days,  
children's parties, meetings etc.**



**Lounge and bar facilities available for  
Funerals and events during the day**

**For details contact Eszter Saxton on  
07765 427 290 or**

**[awma.manager@virginmedia.com](mailto:awma.manager@virginmedia.com)**

**Alternatively please check out our Web site  
[www.adelclub.co.uk](http://www.adelclub.co.uk)**





# CHIROPODY

**Nick Simpson BSc Podiatry (Hons) MCPod**

An essential health care service

at

**WELCOME IN**

Community Centre  
55 Bedford Drive (off Tinshill Lane)  
Ireland Wood  
LS16 6DJ

**Tel. 07751 078787**  
(by appointment only)

Health & Care  
Professions Council  
&  
Simply Health registered



# ROXTON TREE SERVICES

## ALL ASPECTS OF TREE WORK UNDERTAKEN

Large and dangerous trees safely removed      All work carried out to British Standard 3998

Crown lifting and general pruning

Tree Preservation Orders checked

Hedge reduction/removal

Seasoned logs for sale (free delivery)

Stump grinding

Woodchip available

Fully Qualified and Insured

## FREE QUOTATIONS

tel: **0113 268 2235** mobile: **07773 298 770**

e-mail: **roxtontreeservices@gmail.com**

**roxtontreeservices.com**



MSC Joinery Building & Roofing Services  
Proudly supports Adel Bells



LABC Award-winning builders with over 35 years experience.  
Quality workmanship guaranteed

07802816611 ♦ 07971810690  
msc.cornell@btinternet.com  
msc-building.co.uk

6 Floors of Beds & Bedroom Furniture  
**Bedside Manor**

108 – 112 Burley Road Leeds LS3 1JP  
(Behind Yorkshire Television)

0113 24 25 600      Email: **BSM6floors@aol.com**  
See us on Facebook

Our family business has been supplying quality beds and bedroom furniture to discerning customers for over 21 years.

We know just how important it is for you to make the right choice for sleeping comfort and to suit your lifestyle.

Our personal service assures you of the best advice to help you select from our wide ranges of mattresses, divan beds, bedframes and bedroom furniture.

Bespoke options are also available so you can achieve the look to complement your bedroom

Come along and see us: We're open 7 days.

**Bring this with you and receive an extra 10% off\***

\*Excludes Sale Items



## Two outstanding care homes in Yorkshire



Adel Manor and Guiseley Manor, both located on Otley Road, are outstanding care homes offering residential, dementia and 24hr nursing care.

Part of New Care, the two Yorkshire facilities provide expertly designed home-from-home environments, with residents benefiting from individual person-centred care. They feature private bedrooms with en suite wet rooms, stylish communal lounges and dining rooms, a hairdresser and nail salon, plus beautifully landscaped gardens. A chef prepares nutritional meals daily whilst the wellness team coordinate stimulating activities

This what some of our residents and relatives had to say:

*"Excellent!"*

*"Very attentive service from the minute you walk through the door."*

*"The facility is exceptional."*

*"Every member of staff shows kindness, support and care."*

For more information, or to arrange an appointment to view either Adel Manor or Guiseley Manor, please call the team on the numbers below or email [enquiries@newcarehomes.com](mailto:enquiries@newcarehomes.com)



Guiseley Manor Care Centre Otley Road, Guiseley, Leeds LS20 8FE Tel: 0113 323 0200  
Adel Manor Care Centre Adel Gardens, Otley Road, Leeds, LS16 7FP Tel: 0113 841 1000  
[newcarehomes.com](http://newcarehomes.com)



## BUILDING COMPANY NO JOB TOO SMALL

ALL WORK CARRIED OUT  
TO A PROFESSIONAL STANDARD



- RENDERING
- PLASTERING
- PAINTING
- ARTIFICIAL GRASS
- BOX POINTING
- PATIOS



FOR FREE  
QUOTES & ENQUIRIES  
075 14 276 756





# Locksmith & Security Installer

- Lock Upgrades
- CCTV & Alarm Installation
- Door & Window Repairs
- Safe Fitting
- Call for a free security assessment

Call Andy: 07721876571

**LEMONLOCKSMITH.CO.UK**

DBS CHECKED - CITY & GUILDS CERTIFIED

*Covering Stanley & Nearby Areas*

## LAWRENCE GAUNT OPTICIANS

Ireland Wood Surgery  
Iveson Approach, Leeds, LS16 6FR

Professional  
Comprehensive Eyecare  
Family Opticians since 1978  
Personal Service  
Friendly Independent Advice

**0113 267 9547**

info@lawrencegauntopticians.co.uk  
www.lawrencegauntopticians.co.uk  
*professional eye care with a smile*

Full wheelchair access  
Free on-site parking  
Home visits available

## Ribbons INTERIORS

curtains...blinds...soft furnishings...upholstery

10 The Crescent, Adel, LS16 6AA  
tel: (0113) 3457424  
www.ribboninteriors.co.uk

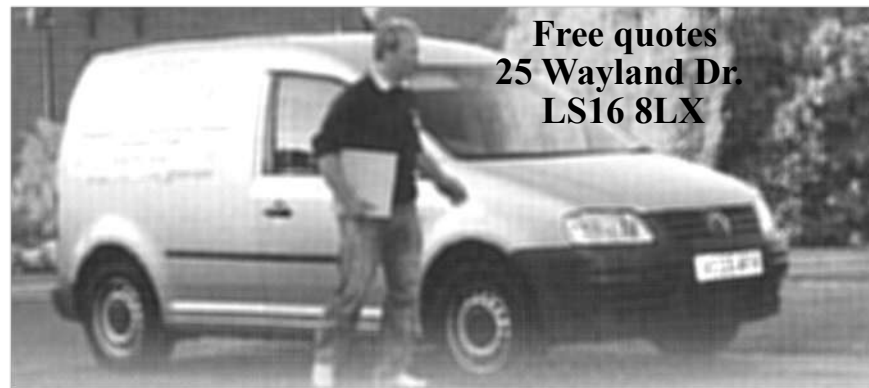
affordable, aspirational interior design  
based in Adel, from individual pieces to  
full room makeover

now stocking paint from Hicks & Weatherburn



**RIBBONS INTERIORS**

design...make...source...fit



Free quotes  
25 Wayland Dr.  
LS16 8LX

## ADEL TILING SOLUTIONS

Brian Hurst has over 20 years experience in tiling. If you are looking for an experienced local tiler to get the job right, first time, call **0113 368 9769** or **07712 896711**, email: **brian\_hurst\_@msn.com**  
No job too big or too small. Cleaning & re-grouting/ silicone removal, ceramic floor & wall tiling inc. mosaic & stone products.

## ADEL GARDEN CARE

**Is your garden in need of some extra care?**



We are experienced in all aspects of plant care including border maintenance, weeding, pruning, training climbers, wildlife gardens, renovating shrubs.

We install fencing & decking, jetwash patios, revitalise ponds.

**Contact us for a free estimate:  
07815 206610**

[www.adelgardencare.co.uk](http://www.adelgardencare.co.uk)

[enquiries@adelgardencare.co.uk](mailto:enquiries@adelgardencare.co.uk)

## SLATER'S FUNERAL SERVICE

**Genuine Independent Family Business  
Established 1884**

**138 years caring for the deceased and  
bereaved families, offering a personal,  
caring and dignified  
24 hour service covering all areas**

**Oakford House, 291 Low Lane, Horsforth,  
LS18 5NU**

**Tel 0113 258 2395**

[www.slatersofhorsforth.co.uk](http://www.slatersofhorsforth.co.uk)



### **LOCAL PROFESSIONAL LOCKSMITH**

**24 HOUR CALLOUT WITH NO CALL OUT CHARGE**

**10% DISCOUNT FOR OAP's AND STUDENTS**

**New Locks Fitted - Changed - Replaced Burglary Repairs & Boarding Up**

**Snapped Keys in Locks - Fixed Defective Locks Repaired Replaced**

**Locked Out? Rapid Response – 20 MINUTES**

**UPVC Window & Door Specialists**

**All Types of Locks & Keys Supplied British Standard Locks Fitted**

**TEL:07947160788**

## **Matthew Holmes**

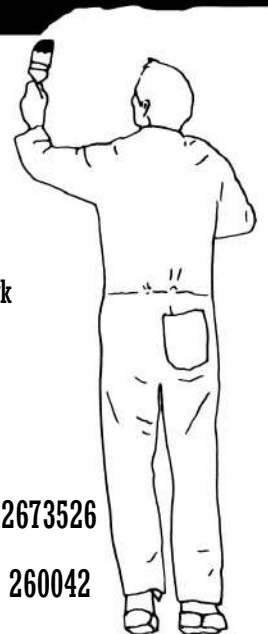
*Domestic and Commercial  
Painter and Decorator*

High quality work  
Clean, reliable, friendly  
Over 26 years experience

Interior & exterior work  
Paper hanging  
Coving

4 New Adel Avenue,  
Adel, Leeds, LS16 6BE  
Email: [mholmesdecorating@live.co.uk](mailto:mholmesdecorating@live.co.uk)

Home: 0113 2673526  
Mobile: 07725 260042



## Musical Aire



**ISM**  
MEMBER

Want to learn or improve saxophone, clarinet or flute?  
I offer day and evening lessons for adults and children in Adel  
Free taster session with no obligation  
Fun, patient and individual tuition, based on what you want to achieve  
Contact me to see how I might help:  
[Caroline@musicalaire.co.uk](mailto:Caroline@musicalaire.co.uk) 07493 327315  
Professional flute and harp duo "Chestra" also available  
for weddings and events  
Member of the Incorporated Society of Musicians

## BUILDING, JOINERY

## AND ROOFING CONTRACTOR

Catering for all your building requirements

Over 35 years in  
the trade  
All works  
guaranteed

For a free inspection  
and quotation  
please call Alan on  
07856 535 677

## Local health and fitness club



Offering a friendly gymnasium, fitness  
studio, leisure pool, spa pool, steam and sauna  
rooms

Come along for a free trial  
Or for more information on membership call  
0113 2699010  
[Hannah.bullock.020@jupiterhotel.co.uk](mailto:Hannah.bullock.020@jupiterhotel.co.uk)



Feel Good Health Club  
Mercure Leeds Parkway  
Otley Road  
Bramhope, Leeds LS16 8AG





**MISTY MAX**  
MISTY WINDOW REPAIR



**BEFORE** **AFTER**

Misty / Steamed Up / Foggy Glass? **07721876571**  
[mistymax.co.uk](http://mistymax.co.uk)

# Adel Pharmacy

141 Long Causeway  
Adel Leeds

♦ Enquiries, please phone **0113 230 0351**

♦ Excellent parking

♦ Collections & delivery of prescriptions where necessary,  
free of charge week days only

Monday	8.15-12.30 14.00- 18.00	Thursday	8.15-12.30 14.00-1700
Tuesday	8.15-12.30 14.00-17.30	Friday	8.15-12.30 14.00-18.00
Wednesday	8.30-12.30	Saturday and Sunday	CLOSED

## Aerial Solutions

**A Family run Leeds business with over 30 years experience**

**All work guaranteed**

**Debit & Credit card payments welcome**

**7 Day Service**

**Extra TV/Sky points from £40**

**Dish & Freesat Installations**

**CCTV Installations**

**OAP Discount**

**Ring 0113 512 6127**

**FREE 0800 328 7517**

**\*on all supplied & installed equipment**



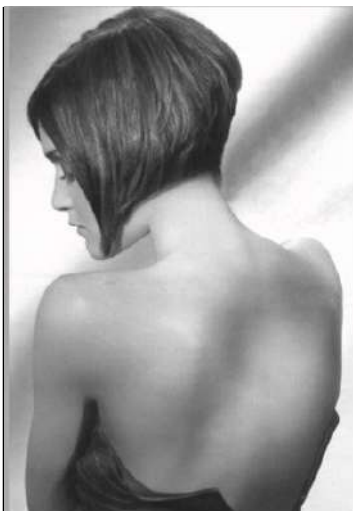
## D. P. A. FLETCHER (BUILDERS) LTD

**All aspects of Building, Joinery  
& Property Repairs**

(with over 30 years of experience)

**Tel: 0113 263 0515**

[jackie.dpafletcherbuilders@gmail.com](mailto:jackie.dpafletcherbuilders@gmail.com)



## Padd Hair Studio

6 The Crescent  
Adel  
Leeds LS16 6AA

**Opening Hours**  
**Tues 9am—3pm**  
**Wed 9am—4pm**  
**Thurs 9am—7pm**  
**Fri 9am—4pm**  
**Sat 8am - 2pm**

**Tel 0113 267 4388**

We are a well-established friendly salon run by Andrea Petrou for over 12 years. We are tucked away on a little parade of shops on The Crescent behind the Co-op on Otley Road.

There are four stylists, two assistants and a junior. Our clients are **men, women, teenagers and children**. We have entire families who have over the years become friends and we have enjoyed watching the younger members growing up.

**SPECIAL INTRODUCTORY OFFER FOR  
ALL NEW CUSTOMERS**

**Offer available through the week  
Cut & Style for just £25.00**

**QUOTE ADEL BELLS TO CLAIM YOUR VOUCHER**

**Find us on Facebook**



R. Pearson  
Electrical and Plumbing

R Pearson Electrical and Plumbing  
All aspects of Electrical and Plumbing work undertaken

Consumer unit upgrades/ periodic testing  
Internal and External Electrics and Lighting  
Electric and Gas Cooker/Hob Supply and Installation  
CCTV Security Systems and Intruder Alarms  
Flat Screen TV and AV Installation  
Fault finding and rectification  
Gas Safe Repairs  
Boilers and Boiler Services  
Leaking Taps  
Radiator Changes  
Bathrooms  
Outdoor Taps



**Free Quotations**  
**Tel: 07796000600**

**[enquiries@rpearsonelectricalandplumbing.co.uk](mailto:enquiries@rpearsonelectricalandplumbing.co.uk)**  
**[www.rpearsonelectricalandplumbing.co.uk](http://www.rpearsonelectricalandplumbing.co.uk)**



SERVING FAMILIES FOR GENERATIONS



**FUNERALS FROM £995\***  
Unattended Funerals | Chapel Service  
Attended Funerals

**J. E. Spence Funeral Service**  
Lawnswood Funeral Home, Otley Road,  
Adel, Leeds, West Yorkshire LS16 8AA  
0113 268 2842

We're here for you anytime.  
Whatever your wishes or budget,  
we can provide a funeral to suit you.

**J. E. Spence**  
*Taking the greatest care  
in and around Leeds*

**DIGNITY**  
FUNERAL SERVICES

dignityfunerals.co.uk/local

\*Pricing is correct at time of going to print and is subject to change. Price stated is for an Unattended Funeral



## DOES YOUR CHILD NEED SUPPORT WITH LITERACY AND NUMERACY?



I offer tuition for 4-7 year olds,  
am experienced, patient and  
believe that learning can be fun!  
Police checked (D.B.S)

Please contact **Glenis Moss** on  
**07960 838116**



**Proud to be  
supporting our  
local community**

**READY TO TAKE YOUR CALL**  
**8AM-8PM**  
**7 DAYS A WEEK**

## APplastering



Fully qualified plasterer  
over 30 years experience  
Fully insured  
All plastering work undertaken  
Internal and external  
No job too small from  
patching to full house

For a competitive quote  
call Andy on 07814705238






**PLUMBING  
& HEATING**

Here at Qubix Plumbing & Heating we offer our services  
largely to domestic household. We cater to everything  
that is plumbing, gas, heating, bathrooms and boilers.

- All Plumbing & Gas Works
- Plumbing Maintenance
- Emergency Services
- Bathroom Installations
- Boiler Quotes
- Boiler Installation
- Boiler Servicing
- Boiler Repairs
- Heating Repairs
- Leak Repairs
- Power Flushing
- Gas Safety Certificates
- Landlord Certificates
- & More...

Please contact us for more details  
**07761 215868**

Facebook icon: @ Qubix Plumbing & Heating  
enquires.qubixplumbing@gmail.com



Specialist Treatment For:

- Stroke
- Parkinson's Disease (PD)
- Multiple Sclerosis (MS)
- Dementia
- Falls
- Spinal Injuries
- Brain Injuries
- Pain
- Functional Neurological Disorder (FND)
- Movement Disorders
- Cerebral Palsy
- Developmental Coordination Disorder (DCD)

If you would like to arrange an appointment with one of our specialist physiotherapists at our clinic in Rawdon or in your own home please call us on 0113 250 8833, email us at [practice@leedsneurophysiotherapy.co.uk](mailto:practice@leedsneurophysiotherapy.co.uk) or contact us via our website at [www.leedsneurophysiotherapy.co.uk](http://www.leedsneurophysiotherapy.co.uk)



**Trade and DIY Welcome**

Our family business supplies a wide range of garden and landscaping materials from our quarry in Bramhope, Leeds



Topsoil, sand, gravel, slate and many types of stone. Available loose or in bags. Collect or delivery.

**Blackhill Quarry**  
Kings Road, Bramhope, Leeds LS16 8BG  
T: 0113 267 4386  
Open: Mon-Fri: 7am-5pm, Sat: 7am-1pm

[www.monebrosdiy.co.uk](http://www.monebrosdiy.co.uk)  
**MONE BROS DIY**  
.co.uk




HELP YOUR CHILD REACH THEIR  
**FULL LEARNING  
POTENTIAL**



Primary - Secondary • Qualified Teachers • Personalised Learning Programmes

**At Kip McGrath, our focus is to help your child reach their full potential.**

We make learning fun and engaging to improve results. You will receive progress reports and updates to track your child's improvement.

English and Maths Tuition  In Centre  Online

Book a **free** assessment today

Adel 07815 760509

485 Otley Road LS16 7NR

[kipmcgrath.co.uk/leedsadel](http://kipmcgrath.co.uk/leedsadel)





## North Leeds Physiotherapy and Sports Injuries Centre

**Sarah Beldon MCSP HCPC**  
**The Police House**  
**Church Close**  
**Pool in Wharfedale**  
**LS21 1LN**

**Please ring 07908 151 241**  
**Daytime and evenings available**  
**Home visits still available within reasonable**  
**distances.**

**APPI Physiotherapy led modified Pilates Classes in**  
**Adel Stables—days or evenings**



**Female painter and**  
**decorator**  
**20 years' experience.**  
**Professional and reliable**  
**Tel: 07398 882 306 or**  
**Email**  
**harperddiy@gmail.com**  
**Taking bookings for**  
**2023**

**B L U E B E R R Y**  
A U T O M A T I O N



Supply & install **Garage Doors**, fully  
automated, Sectional, Rollers, Up&Over  
& more, from new installs to repairs we  
are family run with over 20 years'  
experience. All doors have built in safety  
& courtesy light with 1000's colours,  
**Police rated** & Insurance approved as  
standard!

Now recognised as Yorkshire's leading  
Somfy expert and home automation  
specialist, we also supply & install  
motorised **Awnings & Blinds**

Web: [blueberryautomation.co.uk](http://blueberryautomation.co.uk)  
Email: [blueberryautomate@gmail.com](mailto:blueberryautomate@gmail.com)  
Phone: 07479 662021 0113 232 9463

## Index of Advertisers

- |                                  |                                   |
|----------------------------------|-----------------------------------|
| <b>Aerials &amp; Satellites</b>  | <b>Hair and Beauty</b>            |
| 54 Aerial Solutions              | 55 Padd Hair Studio               |
| <b>Beds</b>                      | <b>Health Care</b>                |
| 44 Bedside Manor                 | 43 N. Simpson, Chiropodist        |
| <b>Home Improvements</b>         | 45 Adel Manor Care Home           |
| 43 MSC                           | 52 Mercure Health Club            |
| 46 Hinton's                      | 59 Leeds Neurophysiotherapy       |
| 48 Ribbons                       | 61 North Leeds Physiotherapy      |
| 51 Alan                          | <b>Leisure Interests</b>          |
| 53 Window Repairs                | 40 Meet the Cones                 |
| 54 DPA Fletcher Ltd              | 42 Adel War Memorial Association  |
| 58 APplastering                  | <b>Locksmith</b>                  |
| 61 Blueberry Automation          | 47 Locksmith & Security Installer |
| <b>Building Supplies</b>         | 50 The Lockdoc                    |
| 59 Mone Bros.                    | <b>Opticians</b>                  |
| <b>Education</b>                 | 48 Lawrence Gaunt                 |
| 51 Musical Aire                  | <b>Painters &amp; Decorators</b>  |
| 58 Glenis Moss Tuition           | 50 Matthew Holmes                 |
| 60 Kip McGrath                   | 61 Harperddiy                     |
| <b>Electrical &amp; Plumbing</b> | <b>Plumbers</b>                   |
| 56 Pearson                       | 58 QUBIX                          |
| <b>Estate Agents</b>             | <b>Pharmacies</b>                 |
| 57 Manning Stainton              | 53 Adel Pharmacy                  |
| <b>Food Outlets</b>              | <b>Tiling</b>                     |
| 39 Ristorante Sorriso            | 48 Adel Tiling Solutions Ltd      |
| 44 Caring for Life               | <b>Wills</b>                      |
| <b>Funeral Directors</b>         | 39 Jane Wintringham               |
| 49 Slater's                      |                                   |
| 57 J E Spence Ltd                |                                   |
| <b>Gardening Services</b>        |                                   |
| 44 Roxton Tree Services          |                                   |
| 49 Adel Garden Care              |                                   |

# Church Services January

<b>Wed 3rd</b>	11am	Holy Communion followed by coffee and biscuits
<b>Sunday 7th</b>		<b>Epiphany</b>
	8.30am 10am 6.30pm	Holy Communion (BCP) Parish Communion Evensong
<b>Wed 10th</b>	11am	Holy Communion
<b>Fri 12th</b>	1.30pm	JJs (for the under sixes)
<b>Sunday 14th</b>		<b>Second Sunday of Epiphany</b>
	8.30am 10am 5pm	Holy Communion (BCP) Parish Communion ACE meeting in the Stables
<b>Wed 17th</b>	11am	Holy Communion
<b>Thurs 18th</b>	3.15pm	Holy Communion in the Stables, with tea & coffee
<b>Sunday 21st</b>		<b>Third Sunday of Epiphany</b>
	8.30am 10am 6.30pm	Holy Communion (BCP) All Age Service with Communion Choral Evensong followed by light refreshments
<b>Wed 24th</b>	11am	Holy Communion
<b>Sunday 28th</b>		<b>Presentation of Christ in the Temple</b>
	8.30am 10am 5pm	Holy Communion (BCP) Parish Communion ACE meeting in the Stables
<b>Wed 31st</b>	11am	Holy Communion

**Junior Church** is held during term time, but not on the 3rd Sunday when there is a 10am All Age service, with communion, and children are welcome for the whole of the service in church.

**ACE** is a group for school year 4 and above. We meet in the Stables to discuss our faith and play silly games.

# Services for Advent and Christmas

<b>Sunday 3rd</b>		<b>First Sunday of Advent</b>
	8.30am 10am 6.30pm	Holy Communion (BCP) Parish Communion Evensong
<b>Wed 6th</b>	11am	Holy Communion followed by coffee and biscuits
<b>Fri 8th</b>	1.30pm	JJs (for the under sixes)
<b>Sunday 10th</b>		<b>Second Sunday of Advent</b>
	8.30am 10am 5pm	Holy Communion (BCP) Parish Communion ACE meeting in the Stables
<b>Wed 13th</b>	11am	Holy Communion
<b>Sunday 17th</b>		<b>Third Sunday of Advent</b>
	8.30am 10am 6.30pm	Holy Communion (BCP) All Age Service with Communion Community Carol Service With wine & mince pies
<b>Wed 20th</b>	11am 7pm	Holy Communion Blue Christmas Service for those who find Christmas hard
<b>Thurs 21st</b>	3.15pm	Holy Communion in the Stables, with tea & coffee
<b>Sunday 24th</b>		<b>Christmas Eve</b>
	10am 3pm 5pm 11.30pm	Parish Communion Crib Service in Church Outside Crib Service Midnight Mass
<b>Monday 25th</b>		<b>Christmas Day</b>
	10am	Parish Communion
<b>Wed 27th</b>	11am	Holy Communion
<b>Sunday 31st</b>		<b>First Sunday of Christmas</b>
	8.30am 10am	Holy Communion (BCP) Parish Communion