



ADEL BELLS

Parish Magazine 60p

Fasting Works of Love

Prayer



February 2023

Ash Wednesday
22nd February

Rector Revd Alison Battye 25 Church Lane Adel LS16 8DQ
alison.battye@leeds.anglican.org 267 3676

Churchwardens Lucy Best-Shaw 73 Otley Old Road LS16 6HG 217 2963
lucybestshaw@yahoo.co.uk

Alison Howarth Apt1, Garmont Court LS7 3RU 262 4622
ahowarth@hotmail.com

PCC Secretary Andy Neal 468 Otley Road, LS16 8AE 07415 424 964
adelpccsecretary@gmail.com

PCC Treasurer Bob Holloway 10 Adel Pasture LS16 8HU 267 9360
bob@hollowayassociates.co.uk

Safeguarding Officer James Moxon 07984164782

Planned Giving Helen Hallett 217 8845

Choirmaster

Music Group Leader Chris Cunliffe 267 6767

Funeral Verger Iain F. Welsh 267 9364

Assistant Funeral Verger Lucy Best-Shaw 217 2963

Flower Rota Lucinda Lillford 07795685870
(evenings only)

Environmental Officer Thang Tang
adel.eco.church@hotmail.com

Weddings Verger Sue Smith 261 0349

Assistant Verger /Librarian Val Crompton 225 9142
email: vjcrompton@ntlworld.com

Adel St John School Head Teacher Mr Peter Dalrymple 261 1804

Parish Hall Bookings Loveday Loveridge 07974 321466

Adel Bells Editor Marjorie Cole 261 0069

Magazine Advertising Beryl Thompson 267 3875
beryl890@btinternet.com

Distribution: Sandra Lavery 261 2008

Website: Trevor Cole 261 0069

Adel Bells
(Please email copy by 10th of the month)

Parish Hall Bookings

Church Website
Follow us on Facebook or Twitter

adelbellscm@gmail.com

adeloldstables@gmail.com

www.adelparishchurch.org.uk
Adel Parish Church



The Parish Church of St John the Baptist, Adel
 Enquiries including Home Communion, Baptisms, Confirmation,
 Weddings, Funerals; please look at the church website
www.adelparishchurch.org.uk

Contents

Our Church

Rector Alison's Letter	6
Weekly Prayer Meetings	7
Also in February	8
An Adel Christmas	9
Progress to Change	12
Penny's Ponders	13
Environmental News	14
Subscriptions are due	15
In Brief	16
The Churchyard in Winter	18
Charity Donations	28

For your Interest

Nature Notes	17
Joyce Hill	19
Puzzles	20
Word Search	21
QE Corner	22
In Your Garden	23
History Groups	24
Social History	25
OPAL	26
York Gate Update	27
What's On	29
Solutions	30
Barry Anderson	31
Billy Flynn	32
List of Advertisers	59



Adel PCC Members 2022–2023

Paul Barker, Lucy Best-Shaw,
 Bruce Buchan, Marisa Clayton,
 Marjorie Cole, Tina Gledhill,
 Bob Holloway, Alison Howarth,
 Sarah Johnson,
 Jenny Jones, Mary Lerner,
 Loveday Loveridge,
 Andrew Neal, Mark Seaward,
 Sue Smith, Carole Smithies,
 Thang Tang, Mike Tunstall

Magazine Editors

Marjorie Cole
 Chris Madeley

Illustrators

Val Crompton
 Marjorie Cole

Parish Registers

Burial of Ashes

12th November
 Brenda Bedford

14th November
 Hilda Hall

Burial

29th November
 Ishaan Patel

Funeral

1st December
 Joyce Stewart

14th December
 Diana Reynolds



Festivals & Feasts

2nd February
 Candlemas

22nd February
 Ash Wednesday



This Month's Poem for Candlemas

By John Henry Newman (1801-1890)

The Angel-lights of Christmas morn,
 Which shot across the sky,
 Away they pass at Candlemas,
 They sparkle and they die.

Comfort of earth is brief at best,
 Although it be divine;
 Like funeral lights for Christmas gone,
 Old Simeon's tapers shine.

And then for eight long weeks and
 more
 We wait in twilight grey,
 Till the high candle sheds a beam
 On Holy Saturday.

We wait along the penance-tide
 Of solemn fast and prayer;
 While song is hush'd, and lights grow
 dim
 In the sin-laden air.

And while the sword in Mary's soul
 Is driven home, we hide
 In our own hearts, and count the
 wounds
 Of passion and of pride.

And still, though Candlemas be spent
 And Alleluias o'er,
 Mary is music in our need,
 And Jesus light in store.

Church Open for Visitors
 Monday and Saturday 1.45pm to 3.45pm





We aim through Christian worship, word and action to celebrate and share the love of God with our neighbours

From the Editor

Spring may be just round the corner, at least I suppose we are all hoping it is, but it is also time to wish you all a happy and healthy new year. There was so much illness around at Christmas time and together with some really cold weather and a boiler in church that ceased to work, it must have resulted in misery for many. As the nights continue to get lighter, may we also hope that our spirits will too.

In spite of the problems there was much to enjoy in Adel Church over the Christmas period. Thanks to live-streaming, many services were watched, but those who were able to get to church found great enjoyment, as will be seen in the reports from some of our

church members, beginning on page 9. If you missed our new ventures, perhaps next year conditions might be different.

Do you like jazz?

We invite you to come to church on the evening of Saturday 25th February for a concert with a difference. A local group of jazz singers and musicians will be performing for us. They will be singing some great foot-tapping songs from the Jazz and Swing period by such as Cole Porter, Duke Ellington, Irving Berlin and more. For details please look at our What's On page, p29.

Lent Courses

Starting in February

Sessions will be on Monday evenings on Zoom - Feb 27th, Mar 6, 13, 20, 27

Starting in March

Sessions will be Weds afternoon 1.30 - 3.00pm in the Stables 1, 8, 15, 22, 29th March

Subscriptions for 2023 to Adel Bells are now due. Please read the information on page 15 to decide how to pay. The choice is yours!

Rector Alison's Letter

Dear Friends

If you have been in church lately you will have seen me wearing the new chasubles and stoles we bought for communion services. Many of you contributed to the generous collection that made their purchase possible. I hope you agree with those who have admired the rich colours and said how right they are for Adel Church.



It is lovely to be wearing something that fits, but more than that – it is moving to be involved in purchasing things to be used for the glory of God in our church.

The new vestments are beautiful; but as new clothes go they are also quite odd! The first Christians almost certainly had no such things, robes probably becoming the norm when Christianity was adopted by the Roman Empire.

Stoles may have developed from items

worn by early bishops as a sign of authority, and may recall the towel worn by Jesus to wash the feet of his disciples...a mix of authority and humility. The chasuble is a version of the 'best' outer garments worn in Roman times.

Unsurprisingly, the wearing of Roman dress by priests has often caused arguments within the church. At certain times, being on the wrong side of the argument was dangerous, and at others, riots were not unusual!

So, what is the argument all about? Those who find vestments such as our new ones a problem have suggested:

- The use of beautiful things in services can detract from the words of the bible we meet to consider and obscure the fact that it is God in Jesus we meet to worship.
- Wearing robes suggests the priest is somehow more important, more holy, than other Christians who meet in worship.
- Such outdated clothing may put off the new comer, the young people in a parish.

Those who find vestments aid their worship have said:

- Robes signify a role not a person. Ordinary clothes can

be a statement of someone's personality and might distract us from worship.

- Robes remind us of the complete 'otherness' of the communion service. Here heaven and earth meet at the table of our Lord...special, even odd, clothes seem appropriate.
- The beauty of the robes points us to the beauty of God.

As with all such arguments – there is truth on both sides. After 3 years, you are probably aware that I'm not very good at fashion! I'm very happy to have a role that comes with a 'uniform'. And wearing such lovely things at our main church family gathering seems right.

But more than that, the vestments we use at Holy Communion remind us that something unusual and holy is happening. Someone at the front in those odd, archaic, beautiful clothes calls us all back to what we have gathered for. In the busyness of preparing for a service, putting on those clothes reminds me of the awesome nature of what it is we are about to do together.

Choosing, buying and using the new vestments also roots you, the present congregation, in the long history of Christian worship in this place. They are your gift to future as well as current worshippers. To properly appreciate the robes I'm writing about – do come and see.

Join us, on-line or in church, as we gather at the place where heaven and earth meet, and work out what this means for our lives.

With love and prayers

Alison

Weekly Prayer Meetings

In the Autumn our weekly prayer meetings started in the knowledge that prayer is powerful, especially when we all pray together. Through our faith-filled prayers we are working with God to determine the future for all of us.

These meetings at **10am on Wednesdays** will continue, but at the same time we would like to encourage more participation by asking you to set aside that time in your own home and pray, as others will be doing in church.

If you are confined to home and unable to get to church, you still have a valuable part to play. If we all pray for the same thing and at the same time, imagine how powerful that will be. Each week we can pray for our world, our country and our community, but we can also pray particularly for members of our church family. To enable this to happen, we intend to suggest three topics per month and they will be printed in Adel Bells (this month they are on page 8) and also on the weekly pew sheets. Please join in if you can.

Also in February . . .

**Ash Wednesday
Service of Ashing**
22nd February
At 7.30pm

**Bible Study
10 am in the Stables**
on
Thursday 9th February
And
Thursday 23rd February

Lent Course

7.30pm on Zoom
Monday 27th February
Contact Alison if you'd like to join

Prayer Meetings 10am every Wednesday In church or at home

Praying this month for:
JJs—toddlers' monthly church
Funeral vergers
Readings & intercessions team

An Adel Christmas

Advent Quiet Day

For our new venture people came as companions to share in preparing for Christmas, joining in with prayers and conversations, connecting themselves with history and experiencing the calming effect of being totally absorbed in a new activity.

The crib scenes reminded us of the well-known story, as we thought of which character we would like to speak to and what we would ask. Perhaps my own humble background made me want to find out what the shepherds' hopes were.

Engaging in the day's activities certainly put us all in the right frame of mind to continue our own journey through the days of Advent.

If you missed this opportunity of peace and quiet, accompanied by cake!, then why not pencil it in your diary for next year, probably the first Saturday of December once again.

Here are a few thoughts from people involved in this new venture.

From Hilary Taylor

Back in November Alison asked me if I had any ideas of activities to do on an Advent Quiet Day. After some thought I got together 4 things:-

1 Write a note to someone you have lost touch with (an idea from "Women's Hour"). Alison provided the materials for this activity.

2 A bible bookmark like the ones in Church. The card and ribbons were left over from making the bookmarks for the Church bibles.

3 A Christmas bauble using a polystyrene sphere (from Edith) decorated using allsorts from my collection of all sorts of things!

4 A Christmas table decoration using the Church's "oasis" and small plastic dishes. I collected a range of greenery and provided bits of "red things" and a candle to complete the item.

I just provided the materials – the people who came did the rest.

From Barbara Wright

I hadn't intended going to the Advent Quiet Day until Marjorie invited me! I'm very glad she did! I attended the morning session, which was informative, interesting and thought provoking. Walking round the churchyard, considering those who had gone before us, led to discussion and prayer and perhaps more noise than quietness but still reflective. The nativity scenes displayed in church were all beautiful, some very simple and others very ornate, but all giving the same message. It was a very pleasant morning (including the "real"

Please support our advertisers and mention Adel Bells

coffee) and one I would attend again. Thanks to the organisers and contributors.

From Beryl Stoker

I only went to the afternoon sessions, but I had a great time. I loved the crib scenes and Alison's fourth talk. I made a Christmas table centrepiece, something I never thought I could do. I told Hilary I couldn't make one of those and she said, "Yes you can". Thanks to Hilary's good teaching, I had the confidence to have a go. I never thought I'd be learning something like this at almost 80 years old. She's brilliant.

Adel St John's School

I got my wish this year: I was once again invited to school for the Christingle Service thanks to Emma Jackson.



Rev. Alison took us through the story of Christingles. We sang "Sing Christingle". This is always an exciting time for the children when they receive their Christingles and take them home at the end of the day.

I also went to the School Christmas Service. It was a joy to see the children and staff with happy smiles on their faces. We all sang carols and then Reception sang "Away in a Manger" with all the actions.

Rev. Alison said a few words and

prayers. Paul Barker played the music for us.

Mr Dalrymple (the Head Teacher) thanked everyone and said "he had enjoyed it very much"

Thank you all; it made my Christmas. Happy New Year to all at Adel St John's School.

Tina Gledhill

Our augmented choir

It is always a pleasure to sing with the Adel Augmented choir and the Christmas carol service is a particular highlight for me. The wonderful Norman church of Adel St John the Baptist is the perfect setting for a Christmas celebration, and it looked particularly splendid this year adorned with Christmas tree, crib and decorations by junior church.

Sunday morning rehearsals for the Christmas carol service started in earnest at the beginning of November, ably led by Chris Cunliffe, Kay Yates and Paul Barker. It was a great pleasure to sing with friends old and new, including our own rector Alison and a fabulous addition of four young trebles this year. The program of carols and readings included traditional favourites Adam Lay Y Bouden and the Sans Day Carol. New to many of us was John Rutter's beautiful Angels Carol and we even learned some new words to Silent Night!

A special thanks goes to Siân and James for warming us up on a very chilly evening by providing very welcome mulled wine and mince pies in the Stables between our final rehearsal and the service.



Despite the world cup final that afternoon and the sudden arrival of black ice that night, we had a great turnout in the church. The service itself was full of the joy of Christmas as we listened to readings by members of the community, including our local MP Alex Sobel, interspersed with congregational carols and choir pieces. A particular delight was the first verse of Away in a Manger sung by our four new girl trebles.

*Away in a manger, no
Crib for a bed,
the little Lord Jesus laid
down his sweet head.*

Adel augmented choir is a friendly and welcoming group and it feels very special to be singing with local friends in our beautiful church. If you are interested in singing, please consider coming along to join us. Have a word with one of our leaders.

Sophie Swinson

5pm Crib Service with Carols by Candlelight

After all the hustle and bustle of getting ready for the festive season, it was lovely to be in Adel churchyard on Christmas Eve.

It was cold and rather damp, but that feeling soon disappeared as the service started. In words and music we heard the age old story of the birth of the Christ child in Bethlehem so long ago.

As we sang "While Shepherds Watched their flocks by Night", being outside gave us a sort of affinity with the shepherds. We could imagine them seeing the star and following it to pay homage at the manger.



Thank you to our choir and musicians who were excellent as usual. The contributions of some of our younger members with the readings and singing was much appreciated. We are lucky to have them all.

I think there must have been about a couple of hundred people or more in the churchyard. It felt really special singing the carols by candlelight. Yes Christmas had almost arrived.

Beryl Thompson

Progress to Change

Thank you Adel St. John's

Our Church has long been a supporter of **Progress to Change**, an independent charity founded by the former Anglican Diocese of Ripon and Leeds. It owns two hostels in Leeds, now called Approved Premises, which welcome offenders near the end of their sentences on licence for a period of up to 3 months. We hope that this stay in comfortable and supportive surroundings with activities and therapeutic interventions, will equip them to return to their community and play a useful part in society without reverting to their offending behaviour. Cardigan House takes 24 men and Ripon House 20 women; both have a contract with the Ministry of Justice which has the aim of protecting the public and preventing re-offending. This contract covers the costs of the staffing and day-to-day running of the houses but the charity uses its own resources to keep the premises in good order in addition to providing these two large and valuable buildings. St John's has regularly sent a financial contribution, as do other parishes, and that income is used for the welfare of the residents. Examples are; to buy presents if they are with us at Christmas, to provide for outings into the city and to provide exercise equipment or tools for gardening. The Trustees of PtC are most grateful for these regular contributions.

However, our community at Adel Church has contributed in another valuable way by providing Trustees, over many years. I am just retiring as Chairman of the Board, Liz Williams was a trustee for a decade, Adrian Lodge served as a trustee for 8 years and Diana Favre is presently Vice-Chair. If this cause of rehabilitation and the provision of a helping hand to those who need it in order to turn from their past ways - often drug and alcohol-ridden - appeals to you and you have some hours to spare for the Board meetings, please consider becoming a trustee. We are always in need of the experience of new members and meetings at the moment are via Zoom. You may want to look at our website for more information or of course be in touch with me.

Thank you St. John's parishioners for the support you have provided for this valuable but challenging work undertaken in our city.

Jill Dilks 2673466
jill.dilks@gmail.com
www.progresstochange.co.uk



In association with the Diocese of Leeds

Penny's Ponders

Hi Everyone!

I know it's a bit late, but this is my first opportunity to wish you all a very happy, healthy and blessed New Year. I really enjoyed Christmas – all my family got together, and some very tasty tit bits came my way – I hope you all had a good time too. I had the opportunity to chase the family puppy which proves I still can!

By the time you read this, I will have had another birthday. I don't really understand what the fuss is about, but I get a very special dinner, so no complaints from me!! So, in your years, I am now thirteen. Apparently, in dog years that makes me either sixty-five or ninety-one, depending whether you multiply each of your years by five or seven! I've decided that sixty-five is more to my liking, so I choose sixty-five – my prerogative, I think!

I have no proper concept of your time. I do know that when my Mum and Dad go shopping or when they go to Church they 'won't be long,' so they tell me, and *that's* a matter of opinion, but I always feel it is a long time if they go out in the light and come back when it's dark. Your years are a complete mystery to me. They do funny things such as days getting longer then shorter, days get hotter and then colder and then you tell me that it is a New Year! So confusing. I do know that as soon as my coat comes out for

the first time, I can expect to be cold *and* wet.

And to add to the confusion, my Mum has told me that God has a completely different time scale. Apparently, a day with Him can be a thousand years, or a thousand years as one of your days. This takes some thinking about. I have decided it means that with God you can't ask 'how many sleeps,' as He operates completely differently to us. This means that it is very important indeed to make sure that we look, listen, read and learn what God wants us to do with our lives. He has told us that He will send Jesus back to the earth when He is ready, but He has also told us that no-one knows the day or the hour when Jesus will come. As far as I can see, this means that we must *always* be ready. When people are coming to see us, food is prepared, you check to make sure everything is clean and tidy ready to welcome them. But if we don't know when they are coming, we must be ready all the time.

So, let's keep readying ourselves for Jesus to come. We can prepare by doing all of the above and *showing* the love of God to all around us by helping and nurturing each other along the way to Christ's Kingdom on earth.

Woofs & licks,

Penny x

Environmental News

New Year, new clothes

Blink Christmas and New Year just whizzed by! We are now well into 2023 and I'd like to talk a bit about clothes in this month's magazine. We all love new clothes. There is joy to be had when wearing those box fresh new shoes for the first time or that new jacket. It can lift our mood, and with the traditional New Year sales last month, there was no better time to buy, right? When I was young, my family would all go into town to try and pick up a bargain. Clothes that would last us, not just until next year but beyond.

Times have changed. Our town centres are not what they used to be and as more shops have moved online so has the rise of the fast fashion clothing industry. Garments are disposable; mass-produced, cheap and designed only to be worn once. The United Nations Environment Program (UNEP) estimates that the fashion industry is responsible for around 10% of the world's global emissions and is one of the largest consumers of water. Also, according to wrap.org.uk, producing one white cotton t-shirt creates as much emissions as driving a car for 35 miles. Many high street shops are guilty of greenwashing the public with eco and ethical pledges about the production of their clothes. Over the past few years, we have seen the major rise of Shein, a multi-

billion dollar online store operating worldwide. Clothes are sold at impossible prices, with prominent countdown timers to rush people to take advantage of deals to save even more money. The whole supply chain to produce clothes at such prices have a big social and environmental impact. Chemicals and dyes which are used to make the materials wash into water courses, whilst in unethical factories workers are paid per garment and docked heavily for mistakes, working inhumane hours in frightful conditions. Is this the price we are willing to pay for the latest trend?

As we become more aware of climate change and the real cost of cheap clothes, wearing used and second-hand clothes is now seen as the trendy thing to do; who knew we could be trendsetters! I may be getting on, ahem...45, but I'm still cool! We love visiting second-hand shops and events to see what new to us bargains we can find.



If you are aware of any events coming up or just even nice stories I can include, please get in touch at adel.eco.church@hotmail.com

Tang x

Please support our advertisers and mention Adel Bells

Subscriptions are due for Adel Bells



If you already are a subscriber

The cost of subscribing for another year for Adel residents is £5. You can now choose how you want to pay.

1. You can give cash or a cheque to the person who brings you your magazine.

Cheques should be made payable to Adel PCC.

2. You can pay **online**, by using this link : tinyurl.com/AdelSocial. You will be asked to pay £5, but you can pay more if you so wish. If you pay online, it is **IMPORTANT** that you let us know that you have done so, by emailing adelbellscm@gmail.com and giving us your address and the date you paid.

3. If you prefer to post your payment, please ring Sandra Lavery on 0113 261 2008 and she will tell you where to send the cheque.

If you are a postal subscriber, please send your payment to Beryl Thompson, 10 New Adel Gardens, Adel, Leeds, LS16 6BD, Tel: 0113 267 3875

More details about this can be found on page 16.

If you do not yet subscribe:-

A. You live in Adel

Perhaps you picked this copy up outside of church and would like to have a copy brought to your house each month. This can only happen if you live in our area, and it would cost you £5 per year.

You can pay online by using the link [tinyurl.com/Adel Social](https://tinyurl.com/AdelSocial). You would also need to email us with your address and let us know the date you paid, in order to ensure the deliverer knows about you. You can send a cheque through the post, but please email and I will supply you with an address.

Email: adelbellscm@gmail.com

B. You do not live in Adel

If you live farther afield you could have it posted to you at a cost of £13 per year.

Please send a cheque to **Beryl Thompson**,

10 New Adel Gardens, Adel, Leeds, LS16 6BD, Tel: 0113 267 3875

Cheques should be made payable to Adel PCC.

In Brief

The cost of posting the magazine

Things are difficult for everyone at the moment financially, but for those of you who receive the magazine by post, we are keeping the price at £13 again this year, even though postage prices have gone up.

Some people do send more and it is very much appreciated. If you feel you can send a little more it would help. If not just send the £13 as before. With many thanks for subscribing to Adel Bells and best wishes for 2023.

Beryl Thompson

100 Club Draw

November

1	Carole Smithies	£98.00
2	Jacqueline Johnson	£37.50
3	Heron Brown	£37.50

December

1	Christina Boulton	£150
2	Audrey Crawford	£75
3	Beryl Stoker	£50

A well-used online profile

As many of you know our Church, has an active internet presence. At the end of each year I get sent information about some of our accounts which I thought you might find interesting. All these figures refer to 2022.

We have 86 followers on **Twitter**.

We have 405 members in our

Facebook Group.

We have 209 followers of our

Facebook Business Page.

Our **YouTube** channel which allows people to watch church services had 3831 views with over 35 000 minutes of video being watched. Top countries watching our videos were UK, USA & Canada but we also know we have been viewed in Europe, Middle East, Far East, Africa and Australia, mainly for funerals.

Our **Google Business Page** is viewed on average by around 200 people per month.

On **A Church Near You** (CofE website) we had 6737 views.

For our **Website** I have no figures at present, but a new update to the system may mean this data is more readily available in future.

As you can see, our Church has an active and well used online profile. If you are not a member of any of our groups or have not investigated our YouTube Channel may I suggest you have a look. To access them simply search for Adel Parish Church on the appropriate sites or follow the links from our website or email us at adelparishchurch@gmail.com and we will point you in the right direction.

Trevor Cole

Nature Notes

Changing bird populations

Last Autumn the RSPB sent out to its members a list of 70 bird species that were thought to be in danger of extinction in Britain. They are not, for the most part, birds that were rare and struggling to survive. In fact 31 of the 70 I have seen, and used to see fairly frequently, in the Meanwood Valley. This is the valley and surrounding woodlands following the stream that flows into Golden Acre Park, through Adel Woods and eventually disappears underground in Meanwood Road.

Although they have different lifestyles, the factor that appears to put the 31 species in danger is that they live in more or less the same area as us – in the fields, parks and gardens of our modern society which we have changed so much that some birds have already become scarce or absent locally. Looking back I feel that I was living in a golden age in the 1950s, 60s and 70s, which it was perhaps for birds, but there were very few butterflies and dragonflies in Leeds in those days so it seems that we can't get everything right all the time.

However, two recent developments are changing our bird populations. One is re-introductions of lost birds – the Red Kite is the best example locally-and the creation of large wetland habitats. In Leeds we now



have Little Egrets, Great White Egrets and Spoonbills, and Cranes breed elsewhere in England. And some birds of prey appear to have re-introduced themselves eg Buzzard and Peregrine. So it seems that we are losing some of the birds that used to be common but if we travel to some bird reserve we can perhaps see species that we never expected to find in this country. I have not seen a Chaffinch for ages, and our bird feeder is untouched, nothing seems to have been taken for weeks, but I see Red Kites every day.

The biggest challenge to our birds it seems to me is Avian Flu. In a couple of months they will be returning to their nesting colonies, and we wait, with some trepidation, to discover how well they have survived the winter.

Peter Larner

Photo by REGINE THOLEN on Unsplash

The Churchyard in Winter

Today I saw a Treecreeper

Today I saw a Treecreeper as I made my way to church, ... late! The bells had stopped ringing, Winter sun lit a little brown bird, as she crept, mouse-like, **round** this trunk, by the path from The Rectory Gate.

I stop beneath the leafless tree. You cannot see, from snow-flaked ground, this bird's white underside, when she, on **upward spiral** trail, probes beneath rough-ridged bark for food, by the path from The Rectory Gate.

Helped by her stiffly-pointed tail, her long-clawed feet climb up with ease. Then she **glides**, ... silently, to the base of a nearby tree, to creep up again, close to me - by the path from The Rectory Gate.

You seldom hear her 'tsee-tsee' cry. And should this little bird feel scared - she can quickly '**freeze**' and wait ... (on one of these old churchyard trees), unseen by **Magpies** flying low, by the path from The Rectory Gate.

Val Crompton
January 2023



*I don't think God minds
when on Sundays,
I sometimes
creep into church late -
after stopping to watch
the Treecreeper,
by the path
from The Rectory Gate.*



Words from Joyce Hill

The Apocrypha

Over the last few years I've written a number of articles about the development of the Bible, and have referred to the collection of texts known as the Apocrypha. In bibles that include these texts, they stand between the Old and New Testaments. Often, however, they are not included at all. So, as we enter Lent this month, a period which from earliest times has been used for further study, it seems a reasonable point in the year to examine what the Apocrypha actually is.

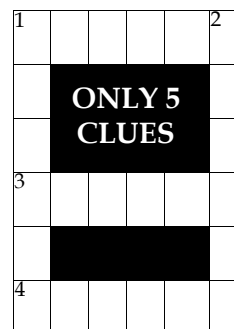
'Apocrypha' comes from a Greek word meaning 'hidden', but since the fifth century it has been used to describe certain books that were not universally accepted as part of the works making up the Old and New Testaments of the Christian Bible.

Why use this term 'apocrypha', 'hidden', in this way? To find the answer, we need to take account of the fact that, in the centuries before the coming of Christ and for some time after, most Jewish communities were Greek-speaking and so tended to use Greek versions of the Jewish Scriptures. These Greek-speaking communities gradually added to the recognised collection of Jewish texts a number of others which they found useful. It is from these accumulated additional books that we have the

texts often now classified as 'The Apocrypha'. They were 'hidden from' – that is to say, not recognised by – the Jewish canon and were thus 'apocryphal'. So, as the Bible gradually developed, they were sometimes regarded as having a rather ambiguous status. It was Martin Luther's Bible of 1534 that first bundled them together in a separate section, standing between the Old and New Testaments. This position gives them their alternative name of the 'intertestamental' books.

In the English Civil War the Puritans excluded the Apocrypha altogether, and in the nineteenth century the British and Foreign Bible Society, likewise excluded it. But the apocryphal or intertestamental works were included in the great post-Reformation bibles from Tudor and Stuart times, including the King James Bible. The Church of England's foundational Thirty-Nine Articles describes these books as being 'for instruction in life and manners, but not for the establishment of doctrine'. Yet in some Christian traditions certain of the apocryphal books are accepted as part of the Old Testament canon. The Roman Church reaffirmed this at the Council of Trent, as did the Eastern Orthodox Church at the Synod of Jerusalem. 'The Apocrypha' is consequently not a hard-and-fast collection.

Puzzles



ACROSS

1. Manage to convey composer's sound
3. Allowed Shakespeare's prince to be very destructive
4. Ordered short tip passed on

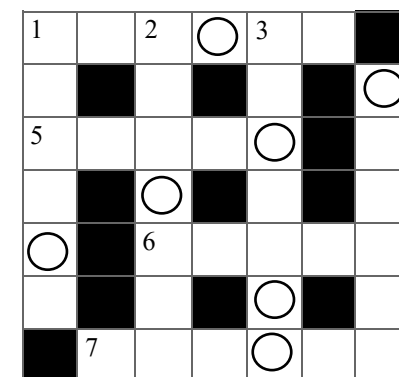
DOWN

1. Village play?
2. Old mathematician returning snooker equipment cover

Jumble Crossword How to play

Look at the clues. In brackets after each clue is an anagram of the answer.

When you have completed the puzzle, study the circled letters and solve the anagram to find the answer to the final clue.



Final Clue

A language of Northern Asia

Solutions on p 30

ACROSS

1. Threat (ENECAM)
5. Measuring instrument (TEEMR)
6. Kingdom (MALER)
7. Sufficient (TNELPY)

DOWN

1. Shrub with yellow flowers (AOSMMI)
2. Not artificial (RUATLNA)
3. For sure (ENRTACI)
4. Decorous (ELESYM)

Word Search

Find the following words associated with the month of February.

FUN
HEARTS
SLEDGE
PANCAKES
LOVE
CARDS

SORRY
KINDNESS
SNOW
FASTING
WINTER
COLD

CROCUS
BIBLE
LENT
FRIENDS

C	W	R	D	T	U	E	U	N	V	N	L	A	E
F	O	U	I	K	W	Y	R	R	O	S	E	R	F
S	N	O	T	I	F	E	C	N	N	E	O	I	T
I	S	E	N	N	A	P	W	U	S	N	F	E	S
S	N	T	I	N	S	A	F	L	B	C	O	L	D
D	E	S	A	L	T	N	L	D	F	S	S	B	A
R	N	R	N	S	I	C	B	S	R	U	S	I	A
C	A	R	D	S	N	A	N	I	I	C	L	B	E
R	F	E	N	N	G	K	Y	B	E	O	E	L	R
L	K	I	N	D	N	E	S	S	N	R	D	O	E
L	D	R	N	E	S	S	O	T	D	C	G	V	N
S	N	E	D	B	P	E	N	R	S	P	E	E	E
Y	S	L	U	L	S	T	R	A	E	H	A	P	D
S	I	T	N	E	L	D	E	Y	V	S	C	E	L

Solution on p 30

QE Corner

Here it is again..... QE (Quite Enlightening) Corner. You all know that I like trivial information, so for your enlightenment I am presenting you this month with another miscellany of "facts(?)"

For a week in 1381, the de facto capital city of England was Chelmsford.

The red material dropped from planes fighting forest fires acts both as a flame retardant and fertiliser, to help new growth after the fire is extinguished.

In 1999, the head of Coca-Cola mooted the idea of temperature monitoring vending machines that would charge you more for a drink on a hot day.

Honeybees and humans are the only animals we know that can be taught the difference between even and odd numbers.

The world record for most capital cities recited in a minute on a rollercoaster is 38.

80% of people will give up on their New Year's resolutions by February.

The small village of Villar de Corneja, Spain, celebrates the New Year at noon instead of midnight, as many of

the residents are elderly and want to go to bed early.

In the 1830s, tomato ketchup was sold as a cure for diarrhoea.

94% of Parisians live within a five minute walk of a bakery.

During World War I, French soldiers were issued a daily ration of Camembert and red wine.

In the 1950s, the French government's pro-sobriety campaign featured posters saying 'No More Than a Litre of Wine a Day'.

Germany has three times as many sausage varieties as the French have cheeses.

After the Second World War, the helmets of German soldiers were recycled into colanders and pots.

White eggs tend to come from less aggressive chickens than those that produce brown eggs.

Only 20% of the world's deserts are covered in sand.

Please note these "Facts(?)" are all from the internet, so don't blame me if they are not correct!

Happy New Year!

Trevor Cole

In Your Garden

"In February there is everything to hope for and nothing to regret"

— **Patience Strong**—

There is unlikely to be much in the garden that will dazzle during February, but there is always some colour somewhere, if you look. It might be subtle and often modest but now is the time to appreciate the papery white bark of the silver birch trees, the snowdrops and crocuses that will increasingly appear through the month, the pastel shades of the various hellebores starting to flower and the red and green hues of the dogwoods that are now at their best. Don't linger too long outside. With the weather unreliable at best, I would seek and secure the warmth and comfort of your armchair and engage in some serious garden planning.

Planning

Few gardeners are ever entirely happy with their gardens. If you want to make changes then it will require both a plan and some action, in that order. If you are considering significant changes, or a revolution, it is well worth getting input from local professional garden designers. Their input, local knowledge and advice will help you to get the best out of your plot, as near to what you want as your individual site, location and budget will allow. They know what works locally and how to adapt plots to favour more exotic

aspirations. Smaller scale planning can take many forms. If whilst out and about last year you found yourself admiring camellias or roses in bloom, or the intense flowers from an ever-growing range of Petunia Surfinias and other annuals, then these could easily grow in your garden. But you will need to decide where you are going to put them, then source, order and plant them at some point in the following months. It is the same for all the bulbs that are now just showing themselves and are still to bloom. Bulbs are typically ordered around August time and planted in the autumn. Deciding on what you want to grow and where needs mulling over now ready for actions to follow.

Wildlife

As well as all the feeders that I keep topped up and the fresh water that is available, I grow many plants that help sustain birds and encourage them to linger a little longer. Berry-rich shrubs such as cotoneaster and pyracantha and trees like rowan, hawthorn and holly provide food and shelter. Even the humble ivy, when allowed to mature and flower will provide nectar for early and late insects, fruit for birds and then shelter and nesting sites.

George Turnbull

enquiries@adelgardencare.co.uk
www.adelgardencare.co.uk

History Groups

The
1152
Club
usually
meets
every
other
Tuesday
at 10am—11.15am
at Kirkstall Abbey Visitor
Centre.



Free parking near the Abbey House. This a free, friendly **local history group** for adults aged 55+ interested in learning more about the local area. Includes a hot drink. No booking is needed, just turn up.

21st Feb Mary Holmes:

Talk about Elizabeth Wolstenholme Elmy, *a first wave feisty feminist who was educated at The Moravian School, Pudsey.*

7 March Aidan Enright:

Talk about Charles Owen O'Connor, *'Landlordism, Liberal Catholicism & Unionism in 19th C. Ireland.'*

28 March Kitty Ross & Catherine Robbins, 'All To Play For.'

All talks take place in the Rose Room, Kirkstall Abbey Visitor Centre.

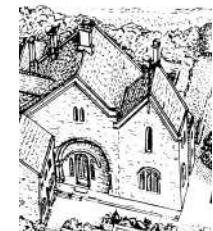
Patrick Bourne

Kirkstall.abbey@leeds.gov.uk
ring 0113 3784079
or contact **Val Crompton**

Abbey House Museum

A fun, **family-friendly** and interactive museum! Travel back in time to Victorian Leeds on our 19th Century street and discover social history.

Wander the recreated Victorian streets of Leeds and feel like you have stepped back in time to the 1880s.



Monday: closed

Tuesday – Friday & Sunday:

10am – 5pm

Saturday: 12 noon – 5pm

Last admission 4.30pm

Kirkstall Lives is a community display (until Sept 2023) which celebrates the lives of people who have lived or worked in and visited Kirkstall.

Abbey House Museum

Ghost Hunt Hosted by Most Haunted Experience and LIVE Feeds **Adults** only.

Event starts on **Friday, 3 Feb 2023** at **9pm** and is happening at Abbey House Museum,

Social History

1152 Club Meeting 3rd Jan 23

Patrick Bourne and Diana Webber told us about the **Reminiscence Box Loan Scheme** at Abbey House Museum.

We gathered on a cold morning and members appreciated a hot drink on arrival. Patrick and Diana had brought items from Abbey House Reminiscence Boxes to pass round the group.

The first small items were from a **1950s Music Box** with musical toys, including a Doll's House piano. 1950s Theatre and Pantomime programmes brought back memories as we chatted and passed these round - 'Rock & Roll', 'My Fair Lady' and local productions.

Ration books from the **1940s box** and **clockwork mice** from the **Pets Box** brought back many memories for me. I remember taking a 1940s clockwork mouse into school in the 1990s - and pupils being surprised at how it zipped about without any batteries! The Pets box included Butterfly collections and old photos of local dog shows.

We heard about New inclusive boxes reflecting our **Multi-cultural City**— a Chinese flute, photos and cards of celebrations including: West Indian

Carnival, Hindu Diwali and Muslim Eid Cards.

Abbey House are collecting small items for a new **Nature Box**, including old pictures of Leeds Parks in previous decades.



Golden Acre 1998

Abbey House would like suggestions for future box themes?

Val Crompton

Leeds City Museum Keep Crafting in 2023 1st February, 1st March

Venue: Leeds City Museum

3:00 pm - 4:00 pm

If you enjoy craft making with other like-minded people, come along to our free craft making session on **the first Wednesday of each month.**

OPAL Activities

OPAL is back with a bang!

Happy New Year to all our members and we hope 2023 is full of fun and happiness for everyone.

OPAL is back with a bang this January with lots of exciting trips and activities planned for 2023 as well as all our regular activities.

We have our shopping trip to Marks & Spencers at Owlcotes on the 9th of February (11am-3pm); this regular monthly trip is a great opportunity for our members to have a browse around and maybe even have a little light lunch with friends. Another trip we have is to Boston Spa on the 10th Of February (11am-3.30pm); this is to watch a musical performance and then have lunch.

We have already planned lots of interesting trips for our members throughout the year, these are a mixture of regular trips such as shopping trips and visits to places of interest (these always seem to involve lunch).

Medical advice can be given

One of the new initiatives we started in 2022 was the Community Health Hub (weekly on Fridays 2pm-4pm and

Wednesdays 1.30pm-5.30pm); these sessions are for people who have been booked into the clinic by the local Neighbourhood Team. At these sessions medical treatment can be given such as wound care etc. Advice and information can also be given on a drop-in basis at these sessions.

Our craft club is back up and running for the New Year and the next sessions will be on the 4th and 18th of February (10am-12noon cost £3), we are looking forward to seeing what new and exciting creations they come up with for this year. Last year we were all amazed at the creativity shown by our members.

At OPAL we aim to provide a bespoke service to our members and as such we are always looking for ways to expand our activities, so if you think there is a gap in our services please let us know.

If you are interested in joining any of the activities we offer, or if you would like more information please contact us:

01132619103

email admin@opal-project.org.uk

or call in to see us at the Welcome In Community Centre (55 Bedford Drive, LS16 6DJ)

Shelley Clark

shelley@opal-project.org.uk

York Gate Update

The start of Spring

Winter days are short and dark, sometimes damp and depressing, at other times crisp and bright with snow or a dusting of frost, but at this time of year most of us find ourselves looking for early signs of spring. And surely, the flower that symbolises the start of spring is the snowdrop – in the language of flowers the snowdrop is synonymous with hope. Also known as Fair Maids of February, Candlemas Bells and Snow Piercer, these winter gems will soon be welcoming visitors back to York Gate Garden.

Although snowdrops are to be found all around the garden, it is the Nut Walk which always takes centre stage in Snowdrop Week. Created in 1961 by Robin Spencer, the Nut Walk was planted with 24 hazel filberts, which he trained to form an arch, and underplanted on both sides of the path with the giant snowdrop “*Galanthus S. Arnott*.” Samuel Arnott, born in Dumfries in 1852, was a gardener and galanthophile and he introduced this stunning snowdrop into cultivation after discovering the plant in his garden.

A few years ago, when I visited York Gate during Snowdrop Week I was surprised and delighted to discover balls of snowdrops hanging from tree branches like Christmas baubles, created using an ancient Japanese garden art form called Kokedama. The snowdrops, their roots wrapped in balls of moss, were suspended in the air and were simply stunning. Jack, our Head Gardener, tells me that the Kokedama snowdrops will be making an appearance again this year so why not come along, enjoy the garden, and see if you can spot these aerial treasures?



Gillian Smith
Heritage Volunteer

*Deep sleeps the winter, cold, wet and grey,
Surely all the world is dead, Spring is far away.
Wait! The world shall waken, it is not dead, for lo,
The Fair Maids of February stand in the snow.*

Cicely M. Baker (1895-1973)

Charity Donations



Every year the PCC agrees on the amounts of money we will donate to charity and we choose which charities will benefit. Each charity chosen receives £250. Our list of charities for last year is as follows:-

St Anne's Community Services
USPG- United Society Partners in the Gospel
Progress to Change (previously West Yorkshire & the Dales Council for Social Concern)
Wheatfield's Hospice
Christians Against Poverty
St Gemma's Hospice
Martin House Hospice for Children and Young People
Emmaus Leeds
The Governors of Adel St John the Baptist (Aided) Primary School
Caring for Life
St George's Crypt
Kids in Kampz

In addition to the above, we donate varied amounts to the Children's Society - each year we offer half of the Crib Services collection, the other half going to our church funds.

Half of the recent crib services collections amounted to £300 and a cheque for this amount was sent to the Children's Society

Information from **Bob Holloway**

What's On

Headingley Flower Club at Bramhope
Friday 3rd February
 AGM (Maybe on Zoom)
Friday 3rd March
'Sugar N Spice'

Sara Barrow
 7pm Refreshments - you are welcome to come as a guest and possibly go home with a winning raffle flower arrangement.
 Bramhope Village Hall,
 Old Lane, Bramhope. LS16 9AZ
 Contact Mrs Jean Money
 Tel 01924 468714

Adel Gardeners' Club
Monday 13th February
 'Gardening with wildlife in mind'
 Lucy Hartley
 This meeting will be on Zoom at 7.30. To get a code, email adelhort@btinternet.com or visit website at adelhort.btck.co.uk

Leeds & District Association of the National Trust
Tuesday 14th February
 'What a lot of terracotta!
 Architectural ceramics in Leeds— Victorian and modern'
 with Rachael Unsworth
 St Chad's Parish Centre,
 Far Headingley

Talks begin at **10.30** am with coffee etc. served from **10.00** am.
 Association members £4.00, guests £5,
 Refreshments by donation

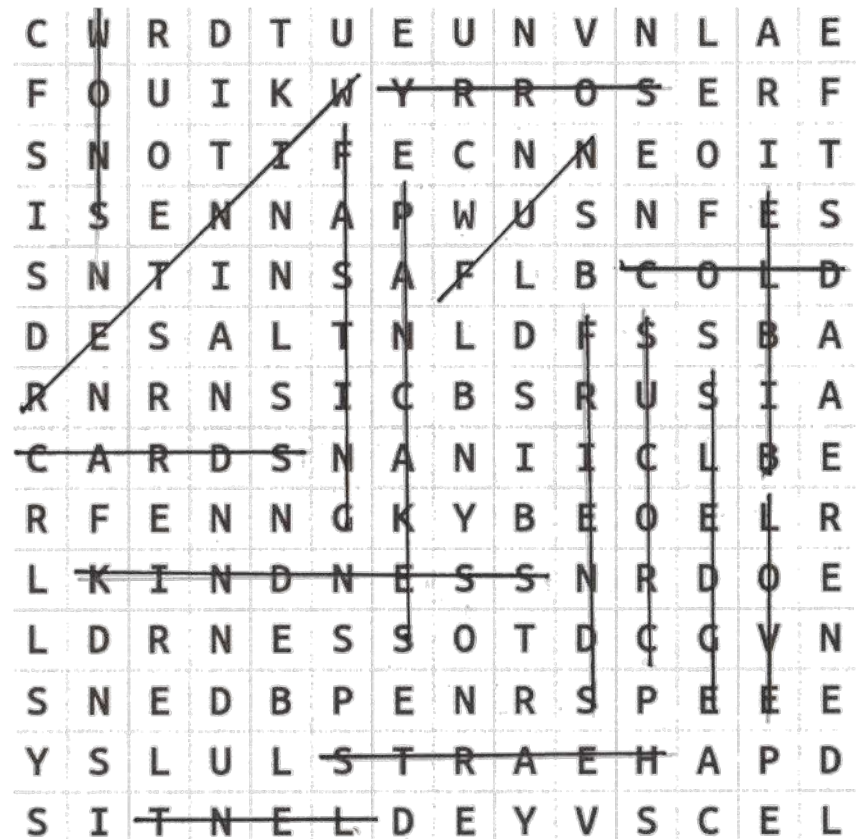
Concert in Church
Saturday 25th February
 7.30pm

Treat yourself to a delightful evening of great foot-tapping songs from the Jazz and Swing period by such as Cole Porter, Duke Ellington, Irving Berlin and more, performed by the

JazzLyrical

group of singers and musicians.
 Admission £10 (£5 under-18s), which includes a complimentary interval glass of wine or soft drink. Pay on the door.
 Proceeds to Church funds.

Holt Park Writers' Group
Monday 13th March
 2-3pm in Holt Park Library
 This takes place every other month.
 New members welcome, come along and meet us.
 Contact **Val Crompton**
 Tel. 0113 225 9142



Jumble Crossword

Across

- 1. MENACE
- 5. METER
- 6. REALM
- 7. PLENTY

Down

- 1. MIMOSA
- 2. NATURAL
- 3. CERTAIN
- 4. SEEMLY

Final Answer
 RUSSIAN

Only 5 Clues

Across

- 1. HANDLE
- 3. LETHAL
- 4. TIDIED

Down

- 1. HAMLET
- 2. EUCLID

Barry Anderson

Vacancy for school governor at Adel St. John's

I have been asked to help find a Governor to fill a vacancy on the Governing Body at Adel St. John's. The Local Authority have one position on the Governing Body which is currently vacant. I have been in touch with the Head Teacher and Chair of Governors and we are trying to find someone willing to take this on. If you would like to be considered, please let me know and I will be able to send the details of how to take this forward. It is a very rewarding role and if you have an interest in young people's education and have any particular skills that might be helpful to the school, for example in finance, special educational needs, other curriculum subjects, please consider if this might be something that would interest you.

Traffic calming – Church Lane

I have received a number of comments and complaints about the speed bumps on Church Lane, which I took up with the Highways Engineer, who replied as follows: *"I've now received the results of the survey. Although this has established that the humps are within the regulations, taking into consideration the public comment received, our Contractor has been asked to revisit these humps to reduce the upstand and soften the profiles. This work will need to be coordinated with a road works permit and*

so I am unable to provide a date for this at present."

Phone mast and base station

At the time of writing I have been advised about a proposed base station and telephone mast to be sited on the junction of Long Causeway and Sir George Martin Drive, opposite the Adel Woods estate. A formal planning application has now been lodged. I consulted with residents on my mailing list to find out initial views and based on this feedback there are very mixed feelings about this proposal. I have contacted the planning officers responsible for this area to get their thoughts. Now that the planning application has been lodged, I will be advising residents.

Reports re power cuts

As you will have seen and heard reports about possible power cuts, I received some information from National Grid who indicated that Emergency Power Cuts are unlikely to happen this winter, however, ongoing reports in the news have led to some customers contacting them unsure or concerned what this might mean for them. Full information is available at northernpowergrid.com/emergencypowercuts

Their advice is that "power cuts would only happen when all other alternatives have been considered or used to deal

with a major energy supply shortage and must take place to reduce demand on the country's power system and fairly share the electricity that is available. Emergency Power Cuts safely manage your electricity supply so the situation can be resolved quicker. They can help prevent damage caused by electricity demand being greater than what's available, from causing longer-term issues on your local power network which could be even more disruptive for you. If Emergency Power Cuts were ever to take place, typically, you could be without power for at least three hours at a time, once or twice a day.

Regardless of the cause of a power cut, if you or someone you care for relies on electricity to power medical equipment and don't know what would happen to it in a power cut, you should speak to your healthcare or medical equipment provider now for advice."

Billy Flynn

I hope you all had a lovely Christmas and thoroughly enjoyed the festive season. I wish you a happy and very healthy New Year. We are well into Winter now but I'm already looking forward to Spring!

Highways

The council is facing considerable financial pressures following the Covid

Opal – warm spaces

Just a reminder that OPAL, based at the "Welcome In" on Bedford Drive, continue to provide their free warm space every Monday 1.30pm – 4.30pm until March 2023. There is food (bagels, crumpets etc), hot drinks and board games as well as digital support for the first hour. The activity is for any age and is totally free. 2 volunteers are on hand to chat to people, play games and serve the drinks and food. People are also welcome to just come and sit in the warm space if that's their preference. The number 6 bus that you can get at Asda, stops right outside.

Cllr. Barry Anderson
Adel & Wharfedale Ward
Direct Dial 0113 3367742
www.barryanderson.org.uk
Twitter @barryanderson19

pandemic and this is adversely affecting council services, notably regarding the condition of many of our roads. Much routine maintenance is running well behind schedule, but if evidence of dangerous deterioration in highway surfaces, including footpaths, is available it is possible to arrange urgent repairs. For example, a large pothole in Church Lane at the top of the hill leading down to Adel Mill

caused damage to the tyres/wheels of eight vehicles in just one weekend in November. We had a repair team out within 48 hours to resurface the worst areas and again a fortnight later to repair more damage to the road surface right up to Five Lanes End and beyond. Most of this damage has been caused by HGVs working between two sites belonging to Headingley Golf Course that are also depositing huge amounts of mud on King Lane making the road hazardous. A much worse accident occurred in Broomfield where a lady fell heavily on a dangerous footpath, breaking bones, damaging teeth and injuring her arm and shoulder. It took a little longer than Church Lane, but a repair team attended last month and resurfaced the worst affected sections of the footpath. So, if you know of any road/footpath you consider to be in potentially dangerous condition please do get in touch.

Anti-social behaviour

I've had the first police report on the usefulness of the camera in the Farrar Lane/Holt Road and Lane/Holt Park area, which isn't finalised as yet but there appears to have been a notable reduction in ASB. Certainly the number of complaints of ASB to the police are well down on the period prior to the camera's installation and I am not picking up anything like the level of complaints from local residents I had previously. However, it's still early days and time will tell if

the camera remains effective.

Adel Beck site

Work has now started in earnest on clearing the site and the order of build is now clearer. There are now no plans for the Adel Pharmacy to move from its current location in Long Causeway to the East Moor Lane site. The initial phase of the development which will take place probably in the first six months of this year involves the construction of a new road, Adel Square Lane, linking East Moor Lane to the Quadrangle. This will include stripping out and stabilising that part of the site; installation of services; and building houses on the first two housing plots, numbers 35 and 36, which are located right at the top of East Moor Lane. The second phase will be to develop the quadrangle, including the chapel and pool and involves 51 plots. Phase three is the remainder of East Moor Lane, ie the other plots at the top of the Lane, the School Gates site behind the planned care home at the bottom of East Moor Lane and the houses on Tile Lane, a total of 21 plots altogether.

If you would like further information on the issues above or anything else in the ward, please do get in touch.

Telephone 0113 4694785,
07810640282 or email
billy.flynn@leeds.gov.uk



A superb new care home



Adel Manor is now open. New Care has opened the doors to a stunning new care home, situated on Otley Road in Adel. Surrounded by countryside, Adel Manor is a peaceful place to call home.

The care facility offers outstanding person-centred residential, nursing, dementia and respite care services, combined with a comprehensive menu of daily activities designed to stimulate residents and encourage independent living.

There are 74 fully furnished bedrooms, each benefiting from an en-suite wet room, plus several stylish communal lounges, dining rooms and quiet reading rooms, as well as beautifully landscaped gardens.

For further information, or to make an appointment to view Adel Manor contact the team on 0113 841 1000 or email enquiries@newcarehomes.com.



Adel Manor Care Centre Adel Gardens, Otley Road, Leeds, LS16 7FP
newcarehomes.com



BUILDING COMPANY NO JOB TOO SMALL

ALL WORK CARRIED OUT
TO A PROFESSIONAL STANDARD



- RENDERING
- PLASTERING
- PAINTING
- ARTIFICIAL GRASS
- BOX POINTING
- PATIOS



FOR FREE
QUOTES & ENQUIRIES
 07514 276 756

Musical Aire



Want to learn or improve saxophone, clarinet or flute?
I offer day and evening lessons for adults and children in Adel
Free taster session with no obligation
Fun, patient and individual tuition, based on what you want to achieve
Contact me to see how I might help:
Caroline@musicalaire.co.uk 07493 327315
Professional flute and harp duo "Chestra" also available
for weddings and events
Member of the Incorporated Society of Musicians

BUILDING, JOINERY AND ROOFING CONTRACTOR

Catering for all your building requirements

Over 35 years in
the trade
All works
guaranteed

For a free inspection
and quotation
please call Alan on
07856 535 677

ROXTON TREE SERVICES

ALL ASPECTS OF TREE WORK UNDERTAKEN

Large and dangerous trees safely removed All work carried out to British Standard 3998

Crown lifting and general pruning Tree Preservation Orders checked

Hedge reduction/removal Seasoned logs for sale (free delivery)

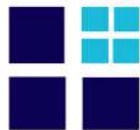
Stump grinding Woodchip available

Fully Qualified and Insured

FREE QUOTATIONS

tel: **0113 268 2235** mobile: **07773 298 770**

e-mail: **roxtontreeservices@gmail.com**



Adel Wills Ltd
For Wills and Lasting Powers of Attorney

Lasting Powers of Attorney and Wills

- Friendly and Professional Advice
- Home Visits
- Local Independent Business
- Fixed Fees

Please call **Jane Wintringham** BA (Hons) Law, MIPW
on
07931 369813 or 0113 305 3604
email: jane@adelwills.co.uk
www.adelwills.co.uk



A member of the Institute of Professional Willwriters
This firm is compliant with the IPW Code of Practice

ADEL WAR MEMORIAL ASSOCIATION

Adel Sports and Social Club



**Archery, Badminton, Bowls,
Cricket, Football, Hockey,**



Lacrosse, Snooker, Squash

and Tennis are all played at Adel

**Most sports have Junior Sections
with fully qualified coaches**

Social Membership just £15 per year

Adel Players produce 3 plays per year

Tickets can be obtained from

boxoffice@adel-players.org.uk

or 0113 275 5585



Rooms available for Hire

**From the main hall for weddings and special
events to smaller rooms for office
training days, children's parties,
meetings etc.**



**Lounge and bar facilities available for
Funerals and events during the day**

For details contact Eszter Saxton on

07765 427 290 or

awma.manager@virginmedia.com

**Alternatively please check out our Web site
www.adelclub.co.uk**



Quality doors.
Great Service. Free Fitting.

Gotta get a Garolla
Give us a call today and we'll come and measure up FREE of charge.

TWO REMOTE CONTROLS
ACOUSTIC & THERMAL INSULATION
FREE DISPOSAL OF YOUR OLD DOOR
AVAILABLE IN 21 COLOURS

Example shown:
• 3.6m wide opening
• 77" Anthracite grey slats
Only £1,990

Price on this door style can range from £1,440 - £2,740 depending on the width of door opening.

GAROLLA
ROLLER SHUTTER DOORS
CALL US TODAY FREE ON:
0113 347 0448
LINES OPEN 7 DAYS A WEEK
MOBILE:
07537 149 128
www.garolla.co.uk

Trustpilot
4.8 out of 5 (Over 4,000 reviews)
CE

MSC Joinery Building & Roofing Services
Proudly supports Adel Bells



LABC Award-winning builders with over 35 years experience.
Quality workmanship guaranteed

07802816611 ♦ 07971810690
msc.cornell@btinternet.com
msc-building.co.uk

DINE WITH US IN THE
Granary Restaurant



Breakfast
Served from 9am - 11.30am
Choose your favourite from our extensive breakfast menu, including yoghurt & granola, English pancakes, kippers, Full English Breakfast plus many 'farm fresh' egg dishes using our own free range eggs!



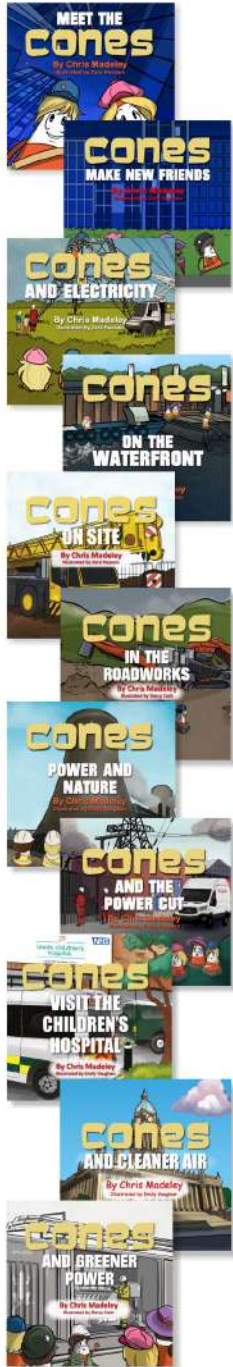
Lunch
Served from 12 noon - 4pm
The beautiful barn is a great place to meet up with friends for lunch. Check out our homemade daily specials, as well as our 'farm favourites' on the menu. Order from our '2 Courses Deal' menu, saving you £s when you add one of our homemade delicious desserts.



Afternoon Tea
Our locally renowned Afternoon Teas are great value. Your 3 tiered stand arrives filled with lots of seasonal homemade tasty treats including our **signature fruit scone** served with jam & clotted cream. Booking essential, no later than 4pm, the day prior to your visit.

OPEN MONDAY - SATURDAY 9AM-5PM
To view our **menus** and book online visit www.craghousefarm.com

CragHouse
FARM
Crag House Farm - the home of Caring For Life • (0113) 230 3618  
Otley Old Road, Cookridge, Leeds LS16 7NH • www.craghousefarm.com



Companies and organisations supporting child safety, friendship and moral and ethical principles through The Cones series of books include:

- Balfour Beatty**
- BAM Nuttall**
- Bion Energy**
- Bradford College**
- Caddick Construction**
- Drax Power Group**
- Enjoy Digital**
- Environment Agency**
- ENGIE**
- Eurovia**
- Grand Central Rail**
- Genovate Power Solutions**
- Jaguar Cars**
- Leeds Childrens Hospital**
- Leeds City College**
- Leeds City Council**
- Leeds Trinity University**
- Northern Powergrid**
- NSPCC**
- Q Parks**
- Ringway**
- Sevensun**
- Town Centre Securities**
- Traffic Management Services**

Note: Trademarks may apply



6 Floors of Beds & Bedroom Furniture
Bedside Manor
 108 – 112 Burley Road Leeds LS3 1JP
 (Behind Yorkshire Television)
 0113 24 25 600 Email: BSM6floors@aol.com
 See us on Facebook

Our family business has been supplying quality beds and bedroom furniture to discerning customers for over 20 years.

We know just how important it is for you to make the right choice for sleeping comfort and to suit your lifestyle.

Our personal service assures you of the best advice to help you select from our wide ranges of mattresses, divan beds, bedframes and bedroom furniture.

Bespoke options are also available so you can achieve the look to complement your bedroom

Come along and see us: We're open 7 days.

Bring this with you and receive an extra 10% off*
 *Excludes Sale Items



Do you need someone to mow your lawn?

Call Michael.
 I'm neat, reliable and standing by to mow your lawn and neatly trim your edges!

I also offer a path and driveway pressure-washing service to brighten up your garden. Call me: **07824 312899**
 (Please leave a message if I don't answer – I may be out gardening !)

Email me: thompsonandkelly@gmail.com
 Rate: £17 per hour
 (Minimum charge £8)



Locksmith & Security Installer

- Lock Upgrades
- CCTV & Alarm Installation
- Door & Window Repairs
- Safe Fitting
- Call for a free security assessment

Call Andy: 07721876571

LEMONLOCKSMITH.CO.UK

DBS CHECKED - CITY & GUILDS CERTIFIED

Covering Stanley & Nearby Areas

LAWRENCE GAUNT OPTICIANS

Ireland Wood Surgery
Iveson Approach, Leeds, LS16 6FR

Professional
Comprehensive Eyecare
Family Opticians since 1978
Personal Service
Friendly Independent Advice

0113 267 9547

info@lawrencegauntopticians.co.uk
www.lawrencegauntopticians.co.uk
professional eye care with a smile

Full wheelchair access
Free on-site parking
Home visits available

Ribbons INTERIORS

curtains...blinds...soft furnishings...upholstery

10 The Crescent, Adel, LS16 6AA
tel: (0113) 3457424
www.ribboninteriors.co.uk

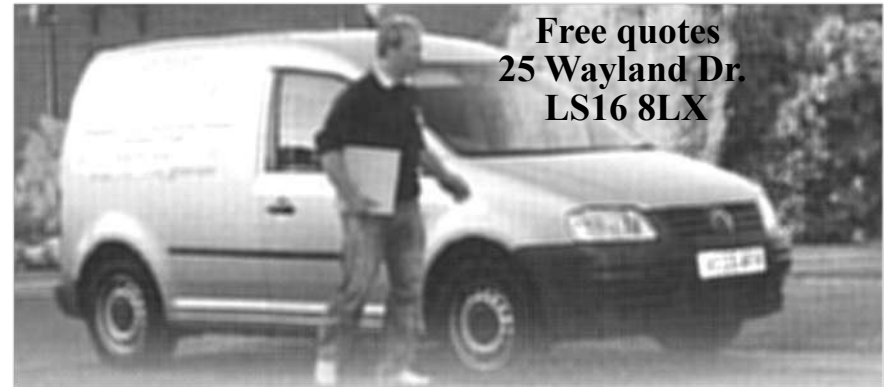
affordable, aspirational interior design
based in Adel, from individual pieces to
full room makeover

now stocking paint from Hicks & Weatherburn



RIBBONS INTERIORS

design...make...source...fit



Free quotes
25 Wayland Dr.
LS16 8LX

ADEL TILING SOLUTIONS

Brian Hurst has over 20 years experience in tiling. If you are looking for an experienced local tiler to get the job right, first time, call **0113 368 9769** or **07712 896711**, email: **brian_hurst_@msn.com**
No job too big or too small. Cleaning & re-grouting/ silicone removal, ceramic floor & wall tiling inc. mosaic & stone products.

ADEL GARDEN CARE

Is your garden in need of some extra care?



We are experienced in all aspects of plant care including border maintenance, weeding, pruning, training climbers, wildlife gardens, renovating shrubs.

We install fencing & decking, jetwash patios, revitalise ponds.

**Contact us for a free estimate:
07815 206610**

www.adelgardencare.co.uk

enquiries@adelgardencare.co.uk

SLATER'S FUNERAL SERVICE

Genuine Independent Family Business

Established 1884

138 years caring for the deceased and bereaved families, offering a personal, caring and dignified

24 hour service covering all areas

**Oakford House, 291 Low Lane, Horsforth,
LS18 5NU**

Tel 0113 258 2395

www.slatersofhorsforth.co.uk



LOCAL PROFESSIONAL LOCKSMITH

24 HOUR CALLOUT WITH NO CALL OUT CHARGE

10% DISCOUNT FOR OAP's AND STUDENTS

New Locks Fitted - Changed - Replaced Burglary Repairs & Boarding Up

Snapped Keys in Locks - Fixed Defective Locks Repaired Replaced

Locked Out? Rapid Response – 20 MINUTES

UPVC Window & Door Specialists

All Types of Locks & Keys Supplied British Standard Locks Fitted

TEL:07947160788

Matthew Holmes

Domestic and Commercial

Painter and Decorator

High quality work
Clean, reliable, friendly
Over 26 years experience

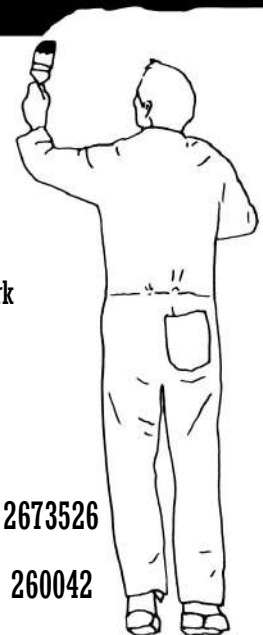
Interior & exterior work
Paper hanging
Coving

4 New Adel Avenue,
Adel, Leeds, LS16 6BE

Email: mholmesdecorating@live.co.uk

Home: 0113 2673526

Mobile: 07725 260042



Woodends Butchers of Adel

471 Otley Rd Leeds LS16 7NR

Free Local Home Delivery Service Now Available

Visit our shop or telephone

01132 673602

to place your order.

We offer a bespoke butchery service, whereby we will process your meat in line with your exact requirements.

All of our beef, pork, lamb & poultry is sourced from within Yorkshire.

Local health and fitness club



Offering a friendly gymnasium, fitness studio, leisure pool, spa pool, steam and sauna rooms

Come along for a free trial
Or for more information on membership call
0113 2699010

Hannah.bullock.020@jupiterhotel.co.uk



Feel Good Health Club
Mercure Leeds Parkway
Otley Road
Bramhope, Leeds LS16 8AG




Misty / Steamed Up / Foggy Glass? **07721876571**
mistymax.co.uk

Aerial Solutions


A Family run Leeds business with 27 years experience
All work guaranteed
Debit & Credit card payments welcome
7 Day Service
Extra TV/Sky points from £40
Dish & Freesat Installations
CCTV Installations
OAP Discount
Ring 0113 512 6127
FREE 0800 328 7517
***on all supplied & installed equipment**

Adel Pharmacy

141 Long Causeway
Adel Leeds

- ◆ Enquiries, please phone **0113 230 0351**
- ◆ Excellent parking
- ◆ Collections & delivery of prescriptions where necessary, free of charge week days only

Monday 8.15-12.30 14.00- 18.00	Thursday 8.15-12.30 14.00-1700
Tuesday 8.15-12.30 14.00-17.30	Friday 8.15-12.30 14.00-18.00
Wednesday 8.30-12.30	Saturday and Sunday CLOSED



D. P. A. FLETCHER (BUILDERS) LTD

**All aspects of Building, Joinery
& Property Repairs**

(with over 30 years of experience)

Tel: 0113 263 0515

jackie.dpafletcherbuilders@gmail.com



Padd Hair Studio

6 The Crescent
Adel
Leeds LS16 6AA

Opening Hours
Tues 9am—3pm
Wed 9am—4pm
Thurs 9am—7pm
Fri 9am -4pm
Sat 8am - 2pm

Tel 0113 267 4388

We are a well-established friendly salon run by Andrea Petrou for over 12 years. We are tucked away on a little parade of shops on The Crescent behind the Co-op on Otley Road.

There are four stylists, two assistants and a junior. Our clients are **men, women, teenagers and children**. We have entire families who have over the years become friends and we have enjoyed watching the younger members growing up.

SPECIAL INTRODUCTORY OFFER FOR ALL NEW CUSTOMERS

**Offer available through the week
Cut & Style for just £25.00**

QUOTE ADEL BELLS TO CLAIM YOUR VOUCHER

Find us on Facebook



R. Pearson
Electrical and Plumbing

R Pearson Electrical and Plumbing
All aspects of Electrical and Plumbing work undertaken

Consumer unit upgrades/ periodic testing
Internal and External Electrics and Lighting
Electric and Gas Cooker/Hob Supply and Installation
CCTV Security Systems and Intruder Alarms
Flat Screen TV and AV Installation
Fault finding and rectification
Gas Safe Repairs
Boilers and Boiler Services
Leaking Taps
Radiator Changes
Bathrooms
Outdoor Taps



Free Quotations
Tel: 07796000600

enquiries@rpearsonelectricalandplumbing.co.uk
www.rpearsonelectricalandplumbing.co.uk

SERVING FAMILIES FOR GENERATIONS



FUNERALS FROM £995*
Unattended Funerals | Chapel Service
Attended Funerals

J. E. Spence Funeral Service
Lawnswood Funeral Home, Otley Road,
Adel, Leeds, West Yorkshire LS16 8AA
0113 268 2842

We're here for you anytime.
Whatever your wishes or budget,
we can provide a funeral to suit you.

J. E. Spence
*Taking the greatest care
in and around Leeds*

 dignityfunerals.co.uk/local

*Pricing is correct at time of going to print and is subject to change. Price stated is for an Unattended Funeral



**DISCOVER
BEAUTIFUL
GALLOWAY!**

Spacious 3 bedroom bungalow for holiday
let sleeps 6 +1 + cot

Direct access to safe, sandy beach at
Sandgreen

Ideal for swimming, water sports and
rock-pooling!
Large private garden Family friendly

Forest Park, Conservation Zoo, Loch Ken,
Open Farms and numerous castles only a
short drive away.
South West Scotland – 4 miles from
Gatehouse-of-Fleet

Email or call
brackenriginfo@btinternet.com
Mob: 07812164522
www.holidaycottagegalloway.co.uk

**DOES YOUR CHILD
NEED SUPPORT
WITH LITERACY AND
NUMERACY?**



I offer tuition for 4-7 year olds,
am experienced, patient and
believe that learning can be fun!
Police checked (D.B.S)

Please contact **Glenis Moss** on
07960 838116



**Proud to be
supporting our
local community**



APplastering



Fully qualified plasterer
over 30 years experience
Fully insured
All plastering work undertaken
Internal and external
No job too small from
patching to full house

For a competitive quote
call Andy on 07814705238


**PLUMBING
& HEATING**





Here at Qubix Plumbing & Heating we offer our services
largely to domestic household. We cater to everything
that is plumbing, gas, heating, bathrooms and boilers.

<ul style="list-style-type: none"> All Plumbing & Gas Works Plumbing Maintenance Emergency Services Bathroom Installations Boiler Quotes Boiler Installation Boiler Servicing 	<ul style="list-style-type: none"> Boiler Repairs Heating Repairs Leak Repairs Power Flushing Gas Safety Certificates Landlord Certificates & More..
--	---

Please contact us for more details
07761 215868


@ Qubix Plumbing & Heating
enquires.qubixplumbing@gmail.com



- Specialist Treatment For:
- Stroke
 - Parkinson's Disease (PD)
 - Multiple Sclerosis (MS)
 - Dementia
 - Falls
 - Spinal Injuries
 - Brain Injuries
 - Pain
 - Functional Neurological Disorder (FND)
 - Movement Disorders
 - Cerebral Palsy
 - Developmental Coordination Disorder (DCD)

If you would like to arrange an appointment with one of our specialist physiotherapists at our clinic in Rawdon or in your own home please call us on **0113 250 8833**, email us at practice@leedsneurophysiotherapy.co.uk or contact us via our website at www.leedsneurophysiotherapy.co.uk



Trade and DIY Welcome

Our family business supplies a wide range of garden and landscaping materials from our quarry in Bramhope, Leeds



Topsoil, sand, gravel, slate and many types of stone. Available loose or in bags. Collect or delivery.

Blackhill Quarry
Kings Road, Bramhope, Leeds LS16 8BG
T: 0113 267 4386
Open: Mon-Fri: 7am-5pm, Sat: 7am-1pm

www.MONE BROS DIY .co.uk



HELP YOUR CHILD REACH THEIR
FULL LEARNING POTENTIAL



Primary - Secondary • Qualified Teachers • Personalised Learning Programmes

At Kip McGrath, our focus is to help your child reach their full potential.

We make learning fun and engaging to improve results. You will receive progress reports and updates to track your child's improvement.

English and Maths Tuition  In Centre  Online

Book a free assessment today

Adel 07815 760509

485 Otley Road LS16 7NR

kipmcgrath.co.uk/leedsadel



North Leeds Physiotherapy and Sports Injuries Centre

Sarah Beldon MCSP HCPC
The Police House
Church Close
Pool in Wharfedale
LS21 LN

Please ring **07908 151 241**
Daytime and evenings available
Home visits still available within reasonable distances.

APPI Physiotherapy led modified Pilates Classes in Adel Stables—days or evenings



Female painter and decorator
20 years' experience.
Professional and reliable
Tel: 07398 882 306 or
Email
harperddiy@gmail.com
Taking bookings for 2023



Blueberry Automation

Supply & install **Garage Doors**, fully automated, Rollers, Sectional, Up&Over & more, from new installs to repairs we are family run with over 20 years' experience in home automation. Built in alarm, **Police rated** & Insurance approved as standard!

Now recognised as Yorkshires leading Somfy expert and home automation specialist, we also supply & install motorised **Awnings, Blinds**, lights, cameras, action!

Email: blueberryautomate@gmail.com
Phone: 07479 662021
web: blueberryautomation.co.uk

CHIROPODY

Nick Simpson BSc Podiatry (Hons) MCPod

An essential health care service

at

WELCOME IN

Community Centre
55 Bedford Drive (off Tinshill Lane)
Ireland Wood
LS16 6DJ

Tel. 07751 078787
(by appointment only)

Health & Care
Professions Council
&
Simply Health registered



Brand New Family Run Italian Restaurant

429 Otley Rd,
Adel, LS16 6AJ
Tel: 2672671
for reservations

Ristorante
SORRISO

View our menu on line at
www.sorrisoleeds.co.uk

Opening Hours

Monday-Thursday 12 - 9pm
Friday & Saturday 12 - 9.30pm
Sunday 12 - 9pm

Takeaway delivery available every day

Advertising

The magazine is published 10 times a year and goes out to 460 homes except for June when we circulate the whole parish (2600 homes)

Full page £140 per annum

Half page £80 per annum

Quarter page £50 per annum

+ £20 for alterations

For further information contact:

Beryl Thompson
10 New Adel Gardens,
Leeds LS16 6BD



0113 267 3875
beryl890@btinternet.com

Index of Advertisers

Aerials & Satellites	45	Adel Garden Care
50 Aerial Solutions		
Beds	51	Padd Hair Studio
42 Bedside Manor		
Home Improvements	34	Adel Manor Care Home
35 Hinton's	47	Hearing
36 Alan	48	Mercure Health Club
39 Garolla Roller Doors	55	Leeds Neurophysiotherapy
39 MSC	57	North Leeds Physiotherapy
40 Ribbons	58	N. Simpson, Chiropodist
49 Window Repairs		
51 DPA Fletcher Ltd	54	L Gibson
54 APplastering		
57 Blueberry Automation		
Building Supplies	39	Adel War Memorial Association
55 Mone Bros.	41	Meet the Cones
Education	43	Locksmith & Security Installer
36 Musical Aire	46	The Lockdoc
54 Glenis Moss Tuition		
56 Kip McGrath		
Electrical & Plumbing	44	Lawrence Gaunt
52 Pearson		
Estate Agents	46	Matthew Holmes
53 Manning Stainton	57	Harperddiy
Food Outlets	54	QBIX
40 Caring for Life		
47 Woodends, Butcher		
58 Ristorante Sorriso		
Funeral Directors	44	Adel Tiling Solutions Ltd
45 Slater's		
53 J E Spence Ltd		
Gardening Services	37	Jane Wintringham
37 Roxton Tree Services		
42 Michael, lawn cutting		



Church Services February

Wed 1st	11am	Holy Communion
Fri 3rd	1.30pm	JJs (for the under sixes)
Sunday 5th		Third Sunday before Lent
	8.30am	Holy Communion (BCP)
	10am	Parish Communion
	6.30pm	Evensong (BCP)
Wed 8th	11am	Holy Communion
Sunday 12th		Second Sunday before Lent
	8.30am	Holy Communion (BCP)
	10am	Parish Communion
Wed 15th	11am	Holy Communion
Thurs 16th	3.15pm	Holy Communion in the Stables, with tea & coffee
Sunday 19th		Sunday next before Lent
	8.30am	Holy Communion (BCP)
	10am	All Age Service with Communion
	6.30pm	Evensong (BCP)
Wed 22nd		Ash Wednesday
	11am	Holy Communion WITH Ashing
	7.30pm	Communion Service with Ashing
Sunday 26th		First Sunday of Lent
	8.30am	Holy Communion (BCP)
	10am	Parish Communion

Junior Church is held during term time. The children start in Church at the 10am service with their families, they then leave with the leaders and, after their own input in the Stables, re-join the congregation for communion and the last part of the service

On the **3rd Sunday** there is a 10am All Age service, with communion, and children are welcome for the whole of the service in church.