



# ADEL BELLS

Parish Magazine 60p

And I will tell you, you are Peter, and on this rock I will build my church, and the gates of Hades will not prevail against it. I will give you the keys of the kingdom of heaven,

Matthew 16, v 18-19



## May 2023

Ascension Day - 18th May

**Rector** Revd Alison Battye 25 Church Lane Adel LS16 8DQ  
alison.battye@leeds.anglican.org 267 3676  
**Churchwardens** Lucy Best-Shaw 73 Otley Old Road LS16 6HG 217 2963  
lucybestshaw@yahoo.co.uk

Alison Howarth Apt1, Garmont Court LS7 3RU 262 4622  
ahowarth@hotmail.com

**PCC Secretary** Andy Neal 468 Otley Road, LS16 8AE 07415 424 964  
adelpccsecretary@gmail.com

**PCC Treasurer** Bob Holloway 10 Adel Pasture LS16 8HU 267 9360  
bob@hollowayassociates.co.uk

**Safeguarding Officer** James Moxon 07984164782  
**Planned Giving** Helen Hallett 217 8845  
**Choirmaster** Chris Cunliffe  
chris.cunliffe@gmail.com

**Funeral Verger** Iain F. Welsh 267 9364  
**Assistant Funeral Verger** Lucy Best-Shaw 217 2963  
**Flower Rota** Lucinda Lillford 07795685870  
(evenings only)

**Environmental Officer** Thang Tang  
adel.eco.church@hotmail.com  
Sue Smith 261 0349  
Val Crompton 225 9142

**Weddings Verger** Mr Peter Dalrymple 261 1804  
**Assistant Verger /Librarian** Loveday Loveridge 07974 321466  
email: vjcrompton@ntlworld.com Marjorie Cole 261 0069  
**Adel St John School Head Teacher** Beryl Thompson 267 3875  
**Parish Hall Bookings** 10 New Adel Gardens LS16 6BD  
**Adel Bells Editor** Sandra Lavery 261 2008  
**Magazine Advertising** Trevor Cole 261 0069  
beryl890@btinternet.com  
**Distribution:**  
**Website:**

**Adel Bells** adelbellscm@gmail.com  
(Please email copy by 10th of the month)

**Parish Hall Bookings** adeloldstables@gmail.com

**Church Website** www.adelparishchurch.org.uk  
Follow us on Facebook or Twitter Adel Parish Church

**What3words** **Church:** beans.reduce.talent  
**Stables:** odds.jams.space

**The Parish Church of St John the Baptist, Adel**  
 Enquiries including Home Communion, Baptisms, Confirmation,  
 Weddings, Funerals; please look at the church website  
[www.adelparishchurch.org.uk](http://www.adelparishchurch.org.uk)

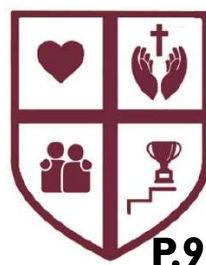
## Contents

### Our Church

Rector Alison's Letter	6
Adel Boundary Walk	7
From our Younger Members	8
ASJ School Logo	9
Also in May	10
Penny's Ponders	11
Running past Church	12
Environmental News	13
Our Church Groups	14
The Big Quiz	16

### For your Interest

Murder Mystery	15
Nature Notes	17
Recipe of the Month	18
Joyce Hill	19
Puzzles	20
Children's Page	21
Adel Farms, Part 1	22
In Your Garden	23
History Groups	24
OPAL	25
QE Corner	26
York Gate Update	27
What's On	29
Barry Anderson	30
Billy Flynn	31
A Majestic Anthem	33
Solutions	40
List of Advertisers	59



### Adel PCC Members 2022–2023

Paul Barker, Lucy Best-Shaw,  
 Bruce Buchan, Marisa Clayton,  
 Marjorie Cole, Tina Gledhill,  
 Bob Holloway, Alison Howarth,  
 Sarah Johnson,  
 Jenny Jones, Mary Lerner,  
 Loveday Loveridge,  
 Andrew Neal, Mark Seaward,  
 Sue Smith, Carole Smithies,  
 Thang Tang, Mike Tunstall

### Magazine Editors

Marjorie Cole  
 Chris Madeley

### Illustrators

Val Crompton  
 Marjorie Cole

**Church Open for Visitors**  
 Monday and Saturday 1.45pm to 3.45pm

## Parish Registers

### Renewal of Wedding vows

**1st April**

Peter & Suzanne Burdekin

### Funeral

**23rd March**

Peter Morris



### Festivals & Feasts

**1st May**

Philip and James, Apostles

**15th May**

Matthias the Apostle

**18th May**

Ascension Day

**28th May**

Pentecost

**31st May**

Visit of the Blessed Virgin Mary  
 to Elizabeth



## A Prayer for our King

Sovereign God,  
 Who called King Charles  
 To be a ruler among his people:  
 Give him grace to be their servant;  
 And help us, following our Saviour  
 Christ  
 In the path of humble service,  
 To see God's kingdom set forward  
 on earth  
 And to enjoy its fullness in heaven;  
 Through Jesus Christ our Lord.  
**Amen**





We aim through Christian worship, word  
and action to celebrate and share the love of  
God with our neighbours

## From the Editor

What a busy month May promises to be, starting with the events of the coronation weekend. Whatever you may be planning, be it a street party, a family get-together or just an opportunity to watch the ceremony on the television, we hope you enjoy witnessing an event that only the older ones among us have ever witnessed. And well done if you have planned to be part of the Big Help Out on the Monday, a day which has been set aside for volunteering for your own community.

Over the last few years there has been much publicity around Rob Burrows suffering from MND, with so much money being raised by Kevin Sinfield. On Sunday 14th May it is our turn to help out, when the Leeds Marathon takes place. If you can manage it, come up to Church Lane and support the runners. Details of

what is on are on p 12. Please lend your support to two members of our congregation who will be running.

Other events not to be missed are the **Boundary Walk** on 13th May, a very enjoyable opportunity to walk in beautiful scenery and get to know other church members better: details on p 7. And, back again after a gap of 3 years, is the **Big Quiz**, bigger and more ambitious than ever, with many rounds of questions of various levels of difficulty, including a section on the Royal Family to mark the month of the Coronation. Details of this are on p 16, so please don't hesitate - put your name down today!

### 100 Club Draw (March)

1st	James Moss	£85
2nd	Maureen Pitts	£40
3rd	Ian Johnston	£30

### Marjorie Cole

If you would like to have an annual subscription to Adel Bells, delivered to your home if you live in Adel or posted to you if not, please get in touch with me and I will give you the necessary information.

**Marjorie Cole, Editor, 0113 2610069**  
**adelbellscm@gmail.com**

## Rector Alison's Letter

Dear Friends

On my day off we often go out into the Dales for a walk. I love hill tops and open moorland, but in the Spring especially there is something magical about a woodland walk. There is the eruption of birdsong and the glimpse of woodpecker or tree creeper. Then there are the flowers: first snowdrops or daffodils; followed by primroses and the violet glow of a carpet of bluebells.

It is the trees that fascinate me most though. In winter I am amazed by their different shapes, and their resilience. Trees grow from tiny cracks in rock faces and cling on in the most inhospitable places. If a fence is built too close, the tree grows around it, almost swallowing it up. Often from a fallen tree, a new sapling grows.

In winter they appear almost dead, but then they are covered by a faint haze of green which deepens as buds grow and open.

Somehow woodlands are very British – part of our history and folklore. In the tales of Robin Hood, Sherwood Forest is really a character in its own right, alongside Maid Marion and Little John. The Major Oak, now over 1000 years old is reputed to be the outlaws' hiding place; an apple tree played a part in our understanding of

gravity; a sycamore tree is the site where the trade union movement was born; and beech trees inspired the 'Ents', character's in Tolkein's 'Lord of the Rings'.

As I gaze up at them, I often wonder how old trees are, and what events they have witnessed. Planting a tree is definitely a statement of hope for the future, since the planter is unlikely to live to see the tree mature.

At Adel Church we are grateful to those in the past who had the foresight and courage to plant the trees we now enjoy in our beautiful churchyard. We are also conscious that it is not ours, but something we hold in trust for those who come after us. Work to care for our trees is a joy and a privilege. It is also a complicated and often expensive matter.

At present, in common with many woodlands, we face the problem of ash die back. Some of our trees will have to be felled before they become dangerous. To maintain the character of the churchyard we will need to plant not just small saplings, but more mature trees too.

We know that Adel residents beyond our church congregation love and value our churchyard, and hope they will also feel able to help support our work. Do look out in the coming

months for ways to learn more about our churchyard trees, and how you can get involved in the preservation of this beautiful community space.

In the meantime, I hope you are able this springtime to enjoy the trees in our own churchyard and the wider countryside.

With love and prayers,  
**Alison**

### **What3words**

You may have been puzzled by the reference on the inside of the front cover to something called What3words.

The need for this came about one day when an ambulance driver had trouble in finding out exactly where Adel Church was. Well, What3 words would have helped.

It is an easy way to identify precise locations. Every 3m square has been given a unique combination of three words: a what3words address. If you know the words and have the app on your phone you can get to a precise spot by using those three simple words.

I have been asked by a church member to include the three words for the church and those for the Stables. I hope they will be helpful to you.

**Marjorie**

## **Adel Boundary Walk**

The ancient tradition of  
**Beating the Bounds**  
of Adel Parish will take place  
on  
**Saturday, May 13<sup>th</sup> 2023**  
**8.30am**  
**start at the Stables**

Join us for all (14/15 miles),  
or just for part of the walk

**Booking essential.**  
**Contact:**  
**Carole Smithies**  
**[carole.smithies@gmail.com](mailto:carole.smithies@gmail.com)**  
**0113 281 3190**

### **Social Events**

**Sat 20th May**  
**The Big Quiz**  
See page 16

**24th/25th June**  
Patronal Festival

**15th July**  
Coffee Morning

**23rd September**  
2pm  
Talk by Joyce Hill

## **From our younger members**

*Easter may be over, but Ascension Day is yet to come. Please read about our younger members plans and hopes for these events.*

### **The Worship Committee**

The Worship Committee at ASJ often plan and deliver Collective Worship. Currently we are planning the Easter assembly, and soon we will be performing it in front of the whole school. Furthermore we often open and close worship on Wednesdays.

#### **Cora Jarvis yr 6**

The Worship Committee is where a group of children from years 5 and 6 help plan and present Collective Worship with help from Alison and one of our teachers Miss White. We sometimes get to evaluate a Collective Worship to see what we could improve on in the future.

I enjoy being in the Worship Committee because it is not just about planning and presenting Collective Worship, it's also about building up confidence in front of people which helps you when you lead services outside of school like at church. You don't have to have faith to get involved in the Worship Committee.

#### **Esther Sheer yr 5**

### **Easter**

Easter is the holiday celebrating the resurrection of Jesus three days after his crucifixion. For us, the resurrection signifies Christ's victory over death and the promise of eternal life for his followers. Easter, which most children and some adults love, is celebrated by hiding and collecting chocolate Easter eggs from the Easter bunny. The eggs and bunny are symbols of new life, rebirth and spring.

### **Ascension Day**

This is the day Jesus rose back up into heaven, is on the 40th day after Easter and was the final day Jesus was seen. On this day he visited his disciples and was then taken to heaven. Although Jesus' body left and ascended back up into heaven, his soul and spirit still stays with us on Earth to this day. Jesus gave special promises before he left for Heaven and his Ascension shows us that his work on earth was completed as God had sent him with a very special mission - his work was done and he returned to his Father in Heaven.

Tradition says, this holiday is celebrated by a three-day procession of torches and banners to symbolise Christ's journey to the Mount of Olives and entry into Heaven.

#### **Hollie Summer Rowntree yr 5**



# ASJ School Logo

## A new vision for the school

After a long period of reflection and input, the children, staff and governors of Adel St John Primary School last year created a new vision for the school..... **to love, serve, support and succeed.**



The vision is rooted in the new commandment given by Jesus to his disciples to "love one another, as I have loved you" (John 13.34). With this vision in mind, the School Council were asked to lead a competition to redesign the school logo to reflect the core values of the school.

The children were excited by this, drew their designs, and from these the new logo was voted for and has been produced. There will be a gold logo on the school jumper and PE hoodie, whilst there will be a maroon logo on the white polo shirt and white PE t-shirt. Look out for the new logo which is now being used on the school newsletter. It is the school's intention that the new logo will be on the website, letter heading and signs outside school by this September.

For both financial and sustainable reasons parents are encouraged to continue using current uniform, including the uniform exchange available in the school lobby. New uniform is only required when current uniform is no longer wearable, and this will take possibly years, so children will be wearing both old and new logos.

**Jill Holloway**  
School Governor

In child friendly language the new vision for the school is defined as ....

to **love** by caring for the world and its people,  
to **serve** by putting others before ourselves,  
to **support** by growing and learning together and  
to **succeed** by becoming who God intends us to be.

## Also in May ...

**Boundary Walk**  
**Saturday 13th May**  
8.30am start  
See page 7

**Bible Study**  
**10 am in the Stables**  
on  
Thursday 11th May  
And  
Thursday 25th May

**Ascension Day**  
**Thursday 18th May**  
7.30pm Service of Eucharist

**The Big Quiz**  
**Saturday 20th May**  
7pm  
In the Old Stables  
See p. 16

**Prayer Meetings**  
**10am every Wednesday**  
**In church or at home**

Praying this month for:  
Junior Church  
Fabric & H & S Committees  
Bible Study Group

# Penny's Ponders

Hi Everyone!

I hope you all had a lovely Easter – we did! It is always lovely to see our families, isn't it? I'm really looking forward to summer now. I do get a bit fed up with rain, but I mustn't moan – I like a big bowl of fresh water along with the best of you! I'm bouncing with excitement! I have a new friend! I've not had a new one for quite some time now, and I've lost a few of my old friends.

When I was a puppy, one of my favourite walks was through the churchyard, past the Stables and down onto Back Church Lane. One day I had the shock of my life! There was a huge creature leaning over the wall (which I later learned was a horse) snorting at me! As I am rather inclined towards nosiness, I immediately ran up to the wall, the horse leaned over, and we touched noses. I had a new friend and ever after this I have had a predilection for horses. Although they are such large creatures, they seem very gentle and curious too. I understand that this is not always the case, and some do bite so do be careful.

We saw each other quite frequently for quite some time after this encounter. I've not seen him for a while, so I hope he's OK.

Anyway, the other day, we were

walking down the farm track and I saw a lovely young pony I hadn't seen before, only two years old, chasing around the field. He was bright ginger and called 'Harry.' He came to the fence; we touched noses and had a lovely chat. Apparently, he has come to live here, so I will look forward to seeing my new friend again soon.

Jesus had lots of friends, was always finding new ones, and is still seeking more. The thing with Jesus is that He always looks for the good in people, and accepts their faults – something I must confess, I'm not always too good at. He encourages us to look for Him, and promises that if we look, we will find Him.

There is a lot of loneliness around us, so I do try to speak to those I come across. The lovely thing is that we never know what a kind word or gesture can do for someone. There can never be enough loving kindness towards each other, so let's try to emulate Him and give our love and friendship to those around us. "Love one another, as I have loved you," Jesus said, "by this everyone will know that you are my friends." So let us try to do our bit to help people to find Him.

Woofs and licks,

**Penny xx**

# Running past church

On Sunday 14th May Adel will at times be cut off from the rest of the city for a large part of the day as a valiant team of runners will be taking part in the Rob Burrow Marathon. This will help to raise vital funds in support of the Rob Burrow MND Centre Appeal and the MND Association as well as many other local and national charities. They will be starting from Headingley Stadium at 9am.

You may not be a runner yourself but you can support those who are, both by donations and coming up to church on the day and waving to the runners as they pass by. They will be coming up Otley Road, turning into Church Lane and then running up in the direction of Golden Acre Park.

We hope as many people as possible will be able to come on the day, although getting here might be difficult and you might have to walk the last bit in order to reach the church. Approaching via Long Causeway and Sir George Martin Drive might be a possibility. It should be a happy occasion so please do your best to get here.

School are making a banner for the occasion and Junior Church are making flags. We hope to create a cheerful atmosphere in the

churchyard and on Church Lane. So please come along if you can to join us and cheer people on. We are planning to offer drinks - but precise timing will be difficult. People will be coming past church in the early parts of the race, so the run past will be over quite quickly.

Two members of our church family will be running in this race. Tim Sheer will be running but not for sponsorship and we wish him every success in this endeavour. James Moxon will be running to raise money for MND. He has been training for months, and you can donate by using this link

<https://www.justgiving.com/fundraising/JamesDocMoxon>

Well done to James and Tim for all the effort they are putting into their training. Our admiration knows no bounds.

## Church Services

Church services will be affected because of the road closures, so it has been decided **not** to hold a 10am service on that day. There will be a service of communion at 8.30am and all are welcome to worship at this.



# Environmental News

## God Save The King!

I'd like to take a slight break from my usual topic this month to mark King Charles III's coronation. For me, as I think for most of us, the Queen had always been in our lives. My family were refugees who left Vietnam in the late '70s. My dad went first, then my mum, and we made the perilous voyage in a little fishing boat from Ha Long Bay to Hong Kong. My mum and dad were only in their early 20s, and I was only a few months old, but that's a story for another time.

We arrived in the UK in the winter of 1979 and my parents weren't prepared for the cold; they said they remembered that the snow reached their knees! We were housed in a hostel in Kirbymoorside until they found us a home in Richmond. The warmth and the welcome my parents received when they first arrived, not knowing any English and with just the clothes they arrived in; the kind folks made sure we weren't without anything, and they made lifelong friends they still keep in touch with today. I may not have been born here, but I'm proud to call this my home and proud to be a British citizen. I had a great respect for Queen Elizabeth and her passing was a huge shock.

King Charles III has long been a campaigner for better conservation,



organic farming, sustainability and tackling climate change. He was well ahead of his time and was thought of as "rather dotty" when he first bought up the issue of plastic waste in 1970. He went on to found Duchy Organics in 1990 and has been leading the way for ethically sourced products with respect to the farmers, the land and the animals. Whilst not vegetarian, he revealed to the BBC in 2021 that he doesn't eat meat twice a week and no dairy once a week in his effort to reduce his carbon footprint. Our new King has done so much to try and help climate change; in 2020, he set up his "Terra Carta" initiative and appealed to organisations around the world to join him in his endeavour to put, as he says, "*Nature, People and Planet at the heart of global value creation.*"

There is much to be learned from our new King, as he leads by example; I am, for one, proud to be British and excited about where we go from here.

Long may he reign over us.

**Tang**

# Our Church Groups

## Fabric committee

*Run by Bruce Buchan this committee is constantly at work behind the scenes and it is thanks to their hard work and dedication that the necessary maintenance of the church, churchyard and Stables is carried out. I asked Bruce to give us an idea of the work involved.*

The most recent work includes the completion of the Quinquennial work covering repair of crumbling stones and mortar in the church, repair of the boundary wall, resetting parts of the footpath and repairs to the roof at a cost of about £10,000. The church porch lights had failed and were replaced with an enhanced LED scheme, the effect of which was appreciated at Advent with the illumination of the crib scene. When the church heating failed, a new part had to be located and fitted. The south facing doors were treated with Tung Oil to help preserve them. Minor maintenance work and repairs have been undertaken as required.

Ash die back has been noticed in the churchyard. This can cause a tree to die. A tree survey was obtained which showed possible problems with a large beech tree. Two surveys were undertaken which showed the beech tree was safe. An expert has identified 3 Ash trees which require expensive work.

The garage in the Stables field was leaking and has been reroofed and a dangerous wall in the car park was rebuilt at a cost of £8000.

All this work has been possible because of the very generous legacies to the church. There is a restricted legacy fund solely for the repair and maintenance of the church, churchyard and Stables. Without this fund the much-needed, expensive work would not be possible.

**Bruce Buchan**

## Bible study Group

**T**he Bible Study group was only started last October but already it feels as if it is a vital part of our church. The group meets on 2<sup>nd</sup> and 4<sup>th</sup> Thursdays from 10am in the Stables. The session starts properly at 10.30, so the first half hour is a time for coffee and chatter. The reading for each session is determined by the Church of England Lectionary.

Able led by Paul Barker, we have the opportunity to read more deeply and share our thoughts in a spirit of openness. What is surprising is that we often learn something new or are helped to think of a passage in a different way. Each person contributes from their own ideas and experiences whilst listening carefully to others. Part of the interest in attending is the

Please support our advertisers and mention Adel Bells

way in which a discussion can range widely. As well as exercise for the intellect, our spiritual life is enhanced and enriched. The group is small at the moment, with a regular core. Anyone is welcome to come along. I should add that we coincide with a music group for toddlers so there is a bit of background noise!

**Rosemary O'Dea**

### **Junior Church**

Our young ones are learning so much and it is delightful to hear their input when they come back into church and report to us what they have learned.

**Marjorie Cole**

## **Murder Mystery**

*Adel Players present  
Our 2023 Murder Mystery*

**SMOKE AND MIRRORS**

*by Pat Riley*

Friday and Saturday, 9 and 10 June, at 7.30 pm,  
at Adel Memorial Hall, Church Lane, Adel, LS16 8DE



Tickets (£15) inclusive of crime quiz, murder mystery competition, and pie and peas supper, can be reserved by e-mailing

Anne and Mike Andrews at

**boxoffice@adel-players.org.uk**

Adel Players is a Section of Adel War Memorial Association:  
Registered Charity Number 1161141

*The Big Quiz is returning to the Stables after  
a 3 year break!!*



*Come and join us for "The Big Quiz" with  
many new and exciting quiz rounds  
Fun guaranteed!*

**Saturday 20th May**

**Doors open 6.30pm**

**for a prompt 7pm start**

**£10 per person**

**Including a hearty supper**

**Booking essential by phoning 0113 2610069**

**or email [adelparishchurch@gmail.com](mailto:adelparishchurch@gmail.com)**



# Nature Notes

For the naturalist every month brings something special, something to look forward to, but you do need lots of enthusiasm to look forward to winter. The only wildlife that is really interesting during the cold, dark days are birds, those that visit to escape the cold northern winter for our milder climate and unfrozen lakes, joining those residents that remain.

This contrasts with the month of May when all nature seems to be in a rush to ensure the continuity of life for another year. Most of the birds are to some degree insectivorous, or rely on other small invertebrates for food. Swallows and martins feed mostly on flying insects; they are quite early arrivals and in some years they arrive to find that we are in a cold spell and flying insects are scarce. This must put a strain on their survival, but an early start means perhaps they can manage to raise two broods (and occasionally three). First brood House Martins, and probably Swallows, often help to feed later young, which makes the process rather quicker.

Two insectivorous species that have adopted a more secure approach are the Spotted Flycatcher and the Swift. They usually arrive at the beginning of May when frosts are unlikely, and raise only one brood – in fact the Spotted Flycatcher is a sad case and I don't think that there are any now in

and around Leeds. Their hunting strategy is to wait for passing insects and pounce, but if no insects pass by they are sunk. Swifts, when feeding young, fly around in likely areas with open mouth hovering up very small insect life – a sort of aerial plankton – and in good areas two adult birds can return to the nest every 5 to 10 minutes. Studies have shown that at times Swifts can travel perhaps 20 miles to find food.

## Fresh green leaves in the churchyard are vital

In May there is still lots of bird song, butterflies are on the wing and in the churchyard Orange Tips will be laying eggs on their food-plant, Jack-by-the-Hedge. Holly Blues, as the name suggests, lay their eggs on Holly in the Spring. The trees themselves have their part to play and their fresh green leaves are vital for the tree itself and for all the insects that use them, and then all the birds -like Blue Tits - that feed their young on the caterpillars. Ash trees seem to be destined for oblivion, like Elms were some years ago, and it will be sad to see them go. If Oak trees ever succumb to some imported disease, our woods, our wildlife and us will suffer a massive blow.

**Peter Larner**

# Recipe of the Month

## Vegan No Bean Chilli

Patience with this recipe, and if you can, make it ahead of time. It tastes much better when left overnight in the fridge.

### Ingredients

400g of vegan mince, I like Morrisons' own brand  
200g of seitan chopped up. If you can't get hold of any, use another  
200g of vegan mince  
1 large onion  
4 cloves of garlic  
1 tablespoon Santa Maria chipotle paste which can usually be found in the Mexican food aisle  
2 tablespoons tomato paste  
660ml bottle of beer  
1 teaspoon oregano  
1 tablespoon of maple syrup  
2 heaped tablespoons of flour  
2 OXO stock cubes  
small piece of dark chocolate, at least 70% cocoa.

### Season mix

In a pestle and mortar, finely grind up  
2 teaspoons black pepper  
2 teaspoons cumin  
1 teaspoon cayenne pepper (adjust to how spicy you like it)  
2 tablespoons smoked paprika

### Method

In a blender, puree the onion and garlic and transfer to a stock pot with a tight lid on medium heat with plenty of veg oil and the flour, enough so that the onions, garlic and flour can gently brown off. Keep stirring the

mixture and turn the heat down, so it doesn't burn, for about 10mins. Add the chipotle paste and half of the seasoning mix and stir for about a minute. Add the mince, OXO cubes and tomato paste and gently cook over medium heat for a few minutes, then add the beer. Bring to a simmer and let it cook on very low heat with the lid on for about half an hour. Taste the chilli, which should have a bitter taste from the beer and add salt if needed and the rest of the seasoning mix and the oregano. If the mixture is too thick, add some water. Cook for another half hour, again on a very low heat. Do check back and stir, so it doesn't catch on the bottom of the pan. Add the maple syrup and dark chocolate, check for seasoning again and give another good stir, cook for a further half hour and let it rest. I love it on its own with crusty bread or a baked potato and topped with soured cream, coriander and a wedge of lime. This is my base recipe, but I have added Marmite in the past and other spices such as fennel seeds and mixed herbs instead. It really depends on what I have in at the time. One thing, however. Don't use something like Bournville chocolate. It just tastes wrong in this. Good dark chocolate is a must!

**Julia & Tang**

# Words from Joyce Hill

## A Short History of the Coronation

The coronation ceremony is very ancient. Our earliest written Coronation Order dates from the ninth century and was used for the Kings of Wessex, when England was divided into several kingdoms. It is very special in being the earliest surviving Coronation Ordo from anywhere in the West.

This First Ordo, as it's now known, draws heavily on the account of the anointing of King Solomon in the Old Testament. Oil was poured over the king's head, the leading figures of the kingdom paid homage, the king received regalia symbolising his power and responsibility, and there was an acclamation, which is still used: *Vivat Rex*, 'long live the King'. The symbols of authority were a sceptre, a staff and a helmet – not a crown. The focus of the service was on the king as (military) leader of his people.

A major revision in the later Anglo-Saxon period (the Second Ordo) brings us closer to what we have now. Above all, this revision gave greater prominence to the role of the clergy in the service, required of the king promises to uphold the privileges of the church and there were also changes to the regalia. These now comprised a crown (replacing the helmet), ring, sword, sceptre and staff,

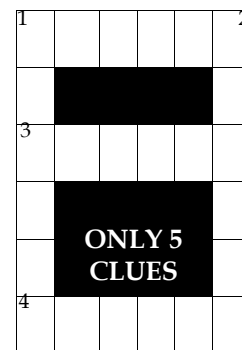
each accompanied with formulas invoking royal virtues and divine aid. The *Vivat Rex* acclamation continued to be used.

The First Ordo had been Christian, of course, but the Second Ordo became much more ecclesiastical in its focus and the anointing of the king was conceived of as a form of sacrament: something holy was going on, beyond a solemn investiture. It marked a change in the meaning of kingship, which became something divine.

The service continued to evolve throughout the Middle Ages but an underlying stability remained, which is still evident today. The fact that the symbolism was substantially derived from the Old Testament allowed the kingly anointing to escape being seen as too Catholic, and so the rituals remained in use.

However, it was the Glorious Revolution of 1688 which brought about major changes. The aim was to exclude the possibility of there ever being a Catholic monarch: the Sovereign had to promise to maintain the Protestant church, emphasised by the presentation of the Authorised Bible. Substantial parts of the text were rewritten, and it is this version, largely rewritten by Henry Compton, Bishop of London, that has been the basis of all subsequent coronations.

# Puzzles



## Across

1. Lake some have negotiated coming west
3. Absentee? Mostly loyal worker
4. Nude relative fails to finish commercial

## Down

1. Some having a tea, usually, and cake
2. Scandinavian girl, maybe, to help securing half of street

Ha! Ha!

What does Charles Dickens keep in his spice rack?

## Red Herring

Five of the words below must be entered in the grid, reading across, so as to create five more words reading down. Two letters are already in place. Can you spot the red herring?

ASSET

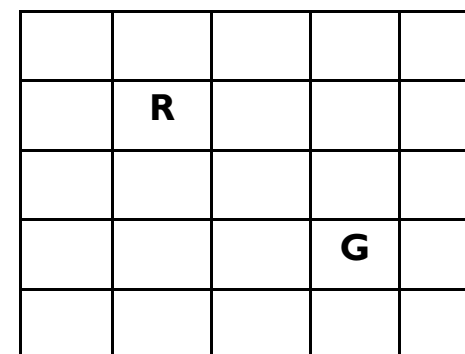
ESTER

BEAUS

ORLON

CAPRI

RANGE



Solutions on page 40

## Children's Page

### Facts about insects

A ladybird might eat more than 5,000 insects in its lifetime!



A bee's wings beat 190 times a second, that's 11,400 times a minute.

Caterpillars have 12 eyes!

There are 36 species of dragonfly found in the UK.

Bulldog ants can leap seven times the length of their bodies!

Mosquitos are attracted to smelly feet!



Butterflies taste with their feet.

A hornet's favourite food is a...bee!



Grasshoppers existed before dinosaurs!

Greater water boatmen breathe through their bottom!

## Adel Farms, Part 1

### Ilbert de Lacey

He was the Norman Overlord of Adel in 1066. You can see a picture of Ilbert in the stained-glass History window in Adel Church.



Ilbert (1045-1093) was a 21 year old knight when he fought alongside William the Conqueror at the Battle of Hastings in 1066. Ilbert was given land in Yorkshire, (including Adel) and at Pontefract, where he built his castle.

In 1152, Henry de Lacey, the grandson of Ilbert de Lacey, was now the Overlord of Adel. Henry owned most of Adel Parish and he gave land in Cookridge (which was part of the old Parish of Adel) to the monks of Kirkstall Abbey.

The monks cleared and used suitable parts of the land for farming. They built Granges (small farms) on land where Cookridge Hall now stands, and on the site of High Farm and also, near Moseley Beck, on the site of Crag Farm.

The monks' farmhouse would have been a simple, timber-framed, low building with a thatched roof and central stone fireplace and chimney. They would collect wood for fuel - and farm mainly sheep.



In 1539, King Henry VIII, at the dissolution of the Monasteries, sold off the Granges to raise funds. Eventually the Adel Granges were bought by the Kirke family. The old farmhouses were rebuilt in the 16th century.

You can visit the **High Farm**, once the home of the Perkin family) - now a pub.

Peter Parkinson bought Crag Farm & 4 fields in 1987 for *Caring for Life*. You can see the old farm, walk round the grounds and Play Area, visit the Granary Restaurant, Farm Shop and Garden Nurseries. (see p28) I enjoyed a visit to **Crag House Farm**, in April, with the OPAL Wellbeing Walking Group.

### Val Crompton



# In Your Garden

"When April steps aside for May, like diamonds all the rain-drops glisten; fresh violets open every day; to some new bird each hour we listen."

- **Lucy Larcom**

"Ne'er cast a clout, till May be out" - a familiar but curious epithet the derivation of which is obscured by time. Possibly based on a very early Spanish proverb, there is debate around whether the May referred to is the month of May or the Mayflower (hawthorn) which flowers at this time. Clout is an old word for a piece of clothing so the general meaning is to keep a jumper handy till June! As a gardener, I have always interpreted the phrase as a general caution to take extra care of seedlings and tender plants with their fresh new growth, until the danger of frost has passed - usually towards the end of May in Adel.

May is the time to be planting out your summer bedding, either straight into prepared beds in the garden, or else into your pots or containers. It is a good idea to add slow-release fertilisers to the soil, or some other soil enrichment, to give plants nutrients throughout the summer. Regular but not excessive watering is essential. Very few plants will thrive or survive prolonged water-logging. If you have anything tender to plant out, be cautious with the weather. Frosts

are always possible in the first half of the month, a consequence of our raised elevation here in Adel.

May is in many ways the most colourful and striking of months for flowering plants. It might be much to do with the months of patient anticipation but the bright, still fresh green leaves on the trees, an abundance of blossoms in the canopy and carpets of tulips, late daffodils and all manner of flowering shrubs and plants brighten most gardens and public spaces right now.

I will be watching out for signs of fledging birds throughout the month. As I write I have nest

building and occupied nest boxes in my own garden. Hopefully last year's breeding nuthatches will return. If we are lucky we might get dusk visits from the pipistrelle bats, from fox cubs or baby hedgehogs, checking us out, reward for the sensitive planting, provision of cover and open boundaries that allow safe roaming.



Nuthatch

**George Turnbull**

enquiries@adelgardencare.co.uk  
www.adelgardencare.co.uk

# History Groups

**The I152 Club usually meets every other Tuesday at 10am - 11.15am, during term-time, at Kirkstall Abbey Visitor Centre.**

Free parking near the Abbey House. This a free, friendly local history group for adults aged 55+ Includes a hot drink. No booking is needed, just turn up.

All talks take place in the Rose Room, Kirkstall Abbey Visitor Centre.

**Patrick Bourne**

Kirkstall Abbey, Leeds LS5 3EH  
Kirkstall.abbey@leeds.gov.uk

For further details, 0113 378 4079

or contact Val Crompton

## I152 Club Meetings:

**Tues 9th May Diane Webber**

Talk about the **Beecroft-Butlers of Kirkstall Forge.**

**Tues 15th May Nicky Bray**

Music & Wellbeing for **Creativity & Wellbeing Week.**

**Tues 6th June Malcolm**

**Johnson**

**'A thousand Years of the English Language'**

## Abbey House Museum

Tel 0113 378 4079

A fun, **family-friendly** and interactive museum! Travel back in time to Victorian Leeds on our 19th Century street and discover social history.

Monday: closed

Tuesday – Friday & Sunday:

10 am – 5pm

Saturday: 12 noon – 5pm

Last admission 4.30pm

**Thurs 25 May 1-4pm Coronations & Celebrations**—a look at how Leeds has marked coronations of past royals. (inc. hot drink & cake)

**Pre book & pay £12 p.p. at the Museum Shop or ring 0113 378 4079**

**Kirkstall Lives** is a community display (until Sept 2023) which celebrates the lives of people who have lived, worked and visited Kirkstall.



# OPAL Activities



**M**ay at OPAL is an exciting month, we are planning lots of Coronation celebrations as well as enjoying the extra Bank Holiday. We will be having a Coronation themed Friday Social on the **5<sup>th</sup> of May** and a Coronation afternoon tea at our Memory Support group as well as lots of special treats during the whole period. We may even have a special guest make an appearance for photo opportunities, so please come along and see us all decorated up in our bunting as we celebrate this major occasion in our shared history.

Another major event (to OPAL and our members anyway) is the Rob Burrows Leeds Marathon on the **14<sup>th</sup> of May**, when our CEO Ailsa Rhodes MBE is running to raise funds for OPAL. She is taking the training very seriously and can be seen running to work regularly; we all think she is amazing for doing this and we plan on cheering her on from the side-lines as she passes by. If you would like to know more about this, her on-line

fundraising page can be found at [localgiving.org/fundraising/Ailsa-runs-a-marathon/](http://localgiving.org/fundraising/Ailsa-runs-a-marathon/)

## Upcoming trips

We are running a trip to Murgatroyds on the **16<sup>th</sup> of May** for a wonderful fish and chip lunch and to Eden Camp on the **13<sup>th</sup> of June**, please be aware these trips fill up very quickly so if members want to go on them, please book as soon as booking opens. Further details about prices and when you can book from will be in the OPAL newsletter which goes out to members every 2 months.

Our regular shopping trips to Marks and Spencers and Asda at Pudsey Owlcoates continue to be popular, so much so that they are now every 2 weeks instead of monthly. This is a lovely trip where members get collected from home and dropped off at home so they can shop to their heart's content without worrying about carrying heavy bags home.

If you would like more information please contact us on 0113 2619103, email [admin@opal-project.org.uk](mailto:admin@opal-project.org.uk) or call in to see us at the Welcome In Community Centre 55 Bedford Drive, LS16 6DJ

**Shelley Clark**

# QE Corner

Here it is again..... QE (Quite Enlightening) Corner. You all know that I like trivial information, so for your enlightenment I am presenting you this month with another miscellany of "facts(?)"

The Sydney Opera house was completed ten years behind schedule and 1400% over budget.

Research shows that students whose first or last names start with A or B achieve higher grades than those with names that begin with C or D.

Originally, blancmange was made with chicken.

In 2006, Liechtenstein accidentally found 0.3% more of their country when they remeasured their borders.

Until 1961, the New York Times had a full stop in its logo. It was dropped partly because they realised that removing it would save \$600 a year in ink.



William Buckland, Oxford University's first Reader in Geology, called the science 'undergroundology'.

The Thousand Islands region of the US/Canada border contains 1,864 islands.

The red material dropped from planes fighting forest fires acts both as a flame retardant and fertiliser, to help new growth after the fire is extinguished.

The water in Boston Harbour is slightly caffeinated.

The founder of IKEA reused teabags and was known to steal salt and pepper packets from restaurants. He was worth approx. £50 billion at the time of death in 2018.

Cleopatra was the only member of her family that learned to speak Egyptian.

Google employees are known as 'Googlers'. New employees are 'Nooglers' and dogs that come to work with their owners are 'Dooglers'.

Germany has a bumblebee hotline, Die Hummel-Hotline. You can send a photo of a bumblebee via WhatsApp and learn which of the 41 species found in the country you have spotted.

*Please note these "Facts(?)" are all from the internet, so don't blame me if they are not correct!*

**Trevor Cole**



# York Gate Update

When I was a little girl, I spent many an hour on a wet afternoon with my grandma creating scrapbooks full of pictures of our favourite things and, just like my grandma, Sybil Spencer also enjoyed making scrapbooks. We are very fortunate to have several of her scrapbooks in the York Gate Archive. Sybil had a passion for theatre and the arts and one of her scrapbooks is full of pictures of Dutch floral paintings – tulips clearly being a favourite of the Dutch painters.

For just a few years during the Dutch Golden Age of the 17<sup>th</sup> century, tulip bulbs were traded for extraordinary sums of money until, without warning, the market for them spectacularly collapsed. The Dutch tulip craze or tulipomania was the first example of an economic bubble! However, the collapse of the bulb market did not diminish the Dutch appetite for tulips – in art at least. Dutch flower painting persisted for the next two centuries.

As I write this article, Spring is here and everywhere there are signs of the new gardening year. Soon the silken purses of magnolia buds will fall to the ground as the flowers unfurl, and fern fronds, or croziers, are also unfurling to form their large emerald green leaves and then the tulips will arrive – the queens of the Spring Parade! Flamboyant or elegant, from deep dark shades to vibrant hues, or pale and soft pastels, or with exotic stripes

or frilly edges and ruffled petals, tulips have such a diverse range of sizes, shapes, and colours, and whether in pots or in the borders, they are always simply stunning. Every year the gardeners at York Gate ensure there is a fabulous display of tulips all around the garden, and I am looking forward to seeing their choices for this spring. Why not pay the garden a visit and decide which is your favourite?

*Our stalks are very straight and tall,  
Our colours clear and bright,  
Too many-hued to name them all –  
Red, yellow, pink, or white.*

*from Flower Fairies of the Garden by  
Cicely Mary Barker.*

**Gillian Smith**  
Heritage Volunteer


## NB

Although York Gate will be closed on Saturday 6<sup>th</sup> May, we will be open on all the other Bank Holidays. The gardens, shop and café will be open 10am until 4.30pm, with plant sales opening at 11am. Please go to our website for further details about admissions entry [yorkgate.org.uk](http://yorkgate.org.uk) We welcome a new member of staff to York Gate; Emily Lainchbury is our new Visitor Experience and Volunteer Co-ordinator, so please drop her an email if you would like to volunteer at York Gate

[elainchbury@perennial.org.uk](mailto:elainchbury@perennial.org.uk)  
**Sally Latchford**



**Crag House**  
— FARM —

Crag House Farm - the home of Caring For Life • (0113) 230 3622    
Otley Old Road, Cookridge, Leeds LS16 7NH • [www.craghousefarm.com](http://www.craghousefarm.com)

# What's On

## Headingley Flower Club at Bramhope Friday 5th May 'Inspired by'

Jan Faulkner  
7pm Guests are welcome at all meetings. A guest fee will be charged.  
Bramhope Village Hall,  
Old Lane, Bramhope. LS16 9AZ  
Contact Mrs Jean Money  
Tel 01924 46871

## Holt Park Writers' Group Monday 8th May

2-3pm in Holt Park Library  
This takes place every other month.  
New members welcome,  
come along and meet us.  
Contact **Val Crompton**  
Tel. 0113 225 9142

## Adel Gardeners' Club

### Tuesday 9th May 'The World's Largest Gardening Project'

**Doug Stewart: RHS Bridgewater**  
RHS Bridgewater opened its doors to the public in 2021, but Doug was able to visit the garden during its construction, meeting the teams involved. In this talk he shares the story of how it was built and what's happened since. Doug is BBC Radio Humber's gardening guru and it'll be a great treat to have him back with us.  
<https://adelhort.chessck.co.uk/>

## Leeds & District Association of the National Trust Tuesday 9th May 'Gardening the World'

**Damon Sugden**, a volunteer for the Commonwealth War Graves Commission (CWGC) and Chair of the Friends of Pudsey Cemetery Group.  
The talk will look at how the CWGC cemeteries were enhanced by the horticulture, looking at the early influences on their design and the challenges faced now.  
St Chad's Parish Centre,  
Far Headingley  
Talks begin at **10.30** am with coffee etc. served from **10.00** am.  
Association members £4.00, guests £5,  
Refreshments by donation

## Walks around Lawnswood Cemetery Sunday 21st May

Ann Lightman is offering the following walk at **2.00 p.m.**, no charge made!  
"Innovation and Trailblazers"  
Meeting Point: Friends Noticeboard just inside the main entrance.  
The walk takes us up to the Columbarium, the Victorian cemetery and the 1910 extension. A varied walk!  
Reserve date: 28 May  
To book please contact Ann on [c.lightman@sky.com](mailto:c.lightman@sky.com) or 0113 216 0630.

# Barry Anderson

## Temporary closure of Harewood Bridge

I have been advised that Harewood Bridge will be closed for 8 weeks during the summer school holidays for urgent repair work.

The note from the Engineer states:  
"The bridge has suffered from problems with the carriageway surfacing recently and these critical works will comprise the installation of a waterproofing system, resurfacing of the carriageway and repairs to the footway. Because of the narrow width of the road, it will be necessary to fully close the bridge to vehicles and pedestrians for 8 weeks for the works to be completed safely but we will be working to reduce this where practicable."

## Closure of Asda Pharmacy at Holt Park

Last month I wrote about the proposals by Asda to close their pharmacy. Since then I have heard from residents who are concerned about an out of hours pharmacy service i.e. after 5pm and weekends if Asda is not operating.

I went back to the Director of Primary Care about this aspect, and received the reply: "There are several pharmacies in Leeds that provide a service over a weekend, I believe the closest alternative pharmacy that currently provide weekend

cover is 2.2 miles away at Alwoodley Medical Centre, Saxon Mount, Leeds, West Yorkshire, LS17 5DT. However, these hours can change and therefore we would ask that you view **NHS.UK Find a pharmacy - NHS ([www.nhs.uk](http://www.nhs.uk))** to confirm the latest opening hours of pharmacy contractors within your area."

## Airport drop-off and pick up charges

I received notification from the Head of Planning at the Airport of the following increase in charges for pick up and drop off parking:

"I write to notify you in advance of some changes that are taking place to the airport's Pick Up & Drop Off from Wednesday 22<sup>nd</sup> March 2023. Pick Up & Drop Off tariffs for cars will be increasing by £1 for stays up to 20 minutes and £2 for stays between 20 – 30 minutes. Stays between 30-60 minutes and each subsequent hour after will increase by £3. Tariffs for minibuses and coaches will also increase at a similar level to cars. The tariffs for our other car parking, such as Long Stay, remain unchanged.

It has been two-years since we last updated our Pick Up & Drop Off tariffs and we have made this change in response to industry wide operational cost pressures. The increase brings LBA's tariffs in-line with other regional airports and we will continue to provide one of the most

*generous free car parking offers of any UK airport with our One Hour Free Zone.*

*The Pick Up & Drop Off area will remain free to electric cars for up to 1 hour to help drive the airport's sustainability ambitions."*

## **Delivery robots – Adel**

I would like to confirm that the extension of the delivery robots trial will be to 3<sup>rd</sup> June 2023 in Adel and Weetwood. At the current time there are no plans to implement this in any other area of Leeds. The reasons for this extension are summarized below:

"Extending the length of trials using the

Starship Technology robots is needed to help understand the impact this type of service has on local communities over longer periods of time and the contribution to reducing localised carbon emissions in line with objectives set out in the Connecting Leeds Transport Strategy. Analysis of data obtained through public surveys commissioned by the Council strengthens the notion that the trial service has been well received by the local community."

Cllr. Barry Anderson  
Adel & Wharfedale Ward  
Direct Dial 0113 3367742  
[www.barryanderson.org.uk](http://www.barryanderson.org.uk)  
Twitter @barryanderson19

# **Billy Flynn**

## **Leeds 2023 - Year of Culture – Events in Adel**

Questions were asked about the council part funding the year of culture, when so many other day to day issues affecting residents remain unresolved, but there was such a huge interest in the school project, I thought it only right to encourage them and help out. There are two ward events, one created by our schools and the other, artwork, provided by a local artist as a permanent legacy of the year of culture. I would like to thank Nicola Brown, the ward host for the year of culture who has worked tirelessly and relentlessly within the community to successfully deliver the projects. I was delighted to fund art materials for the

schools and contribute towards the cost of the framing and security of the artwork.

## **Schools' project**

The schools' project is centred on Ralph Thoresby's Summer Festival on 15<sup>th</sup> July 2023, with performances of dance, music, magic, theatre and demonstrations from cultural and sports groups together with creative activities. The event will also fundraise to enable new benches to be installed in the ward and for many more trees to be planted. All 6 schools in the ward, Pool, Bramhope, Holy Trinity, Ralph Thoresby Adel Primary and our own Adel St John, are working to each create a large mural. These will be based on the

topic 'My LEEDS' and the children's view on it. The murals will be produced on wood and painted with acrylic paint and will be showcased at the event on the 15<sup>th</sup> July. Each mural will detail the school, the children who took part and the link to LEEDS 2023 and the Year of Culture. Asda has kindly agreed to the murals being displayed on the walls of the Asda concourse as a celebration of all our local schools. The Adel project also attracted the interest of four schools in Weetwood Ward who have been invited to take part, which I think emphasises the attraction and cultural value of art projects to children and young people.

## **Artwork legacy project**

Dianne Riding, a local artist is creating a beautiful piece of stained-glass artwork. Dianne is very generously not charging for any of her time to produce the artwork which is a magnificent gesture for the ward. Dianne lives in Adel and is a passionate advocate of our community and the beautiful green spaces around us. The artwork will take over 150 hours to produce and is based on Golden Acre, which most of our residents visit on a regular basis. At around 100x120cms, it will comprise of 400 individually hand cut pieces of glass incorporating the landscape, wildlife and botanical features of Golden Acre.

The Golden Acre Estate Manager has welcomed the opportunity for the legacy piece to be created for the park. He has identified a location near the outside café area where it can be

installed and be viewed from both sides, even removing a small wall so that it can be given pride of place. It promises to be a stunning piece of artwork and will be a magnificent legacy for the ward which I am confident will be enjoyed by everyone visiting the park. It will be encapsulated within safety glass in a free-standing metal frame for security purposes and be on permanent display.

## **Roadworks**

We seem to be clear locally at the moment. However, I have asked for the appalling mess left opposite the churchyard in Back Church Lane to be tidied up as soon as possible. I'm told that full reinstatement of the road surface and verge will take place when the other works at the King Lane site of the golf course are completed.

Unfortunately, the never-ending works at the Dyneley Arms look likely to continue until well into June due to delays caused by BT. The gas works at the Shaw Lane junction in Headingley are now concluded but Active Leeds (otherwise known as the council) will be carrying out "improvement work" until late June - more chaos and delays on the A660 for the foreseeable future.

If you would like further information please do get in touch.  
0113 4694785, 07810640282 or email [billy.flynn@leeds.gov.uk](mailto:billy.flynn@leeds.gov.uk)



# A Majestic Anthem

## The Coronation Anthem, I Was Glad

Sir Charles Hubert Hastings Parry (1848-1918) is famous for several religious works: for example, the music for the hymn *Jerusalem*, the Coronation Anthem *I was glad* and the lovely tune *Repton* to the words *Dear Lord and father of mankind*.

All Coronation services, since King Charles I in 1626, have featured a choral setting of words from Psalm 122 – *'I was glad when they said unto me let us go unto the House of the Lord'* to be sung as an anthem when the monarch arrived at the west door of Westminster Abbey.

Parry's majestic anthem was composed for King Edward VII in 1902 and revised for King George V in 1911 with additional brass and organ fanfares. The music features a double choir (two sections of sopranos, two of altos, etc), organ and orchestra. The music has an overwhelming feeling of grandeur and empire.

Parry's innovation in this piece was the addition of the Latin acclamations *Vivat Rex* (Long live the King!) or *Vivat Regina* (Long live the Queen!) which traditionally are sung (or rather, shouted) by the scholars of Westminster School.

Not everything runs smoothly at these great national events. For example, one of Handel's coronation anthems in 1717 for King George II and Queen Caroline ended in confusion we are told, while another of the anthems in the Order of Service was left out altogether!

In 1902, *'I was glad'* finished too early in the service. The King hadn't even arrived at the west door of the abbey, so the quick-thinking organist improvised some tunes on the spot until King Edward VII turned up (rather late)! Then the anthem was sung all over again!

Much more recently, in 2011, *I was glad* was sung for the bridal procession of Catherine Middleton at her marriage to Prince William. It was also sung at the wedding of Prince Charles and Diana in 1981.

In 1898 Parry was appointed a Knight Bachelor and in the 1902 Coronation honours he was created a Baronet of Highnam Court. Parry died after catching Spanish flu during the pandemic in 1918.

By **Les Ryan**,  
Organist, Mumbles Ministry Area,  
Swansea



## Fun characters having great adventures written to promote:

- ✓ Being good friends
- ✓ Embracing differences
- ✓ Taking care
- ✓ Having lovely manners
- ✓ Learning who may keep them safe

## Join the Cones and enjoy the fun!

Available from all good bookshops and on line, "Meet the Cones" and "Cones Make New Friends" introduces the Cones, how they come alive and how they become friends. The Cones series of books is written to be fun to read while helping children learn to live with each other in the best

possible way but  
always with safety as  
their first priority.



www.fisherkingpublishing.co.uk

Helping children learn to  
live and play within  
parameters based on  
moral and ethical values.

e: [chris@theconesbooks.com](mailto:chris@theconesbooks.com)  
m: 07841 436765  
[www.theconesbooks.co.uk](http://www.theconesbooks.co.uk)

Companies and  
organisations supporting  
child safety, friendship and  
moral and ethical principles  
through The Cones series of  
books include:

**Ai Workwear**  
**Amey**  
**Approved Food**  
**Balfour Beatty**  
**BAM Nuttall**  
**Bion Energy**  
**Biz Vision**  
**Bradford College**  
**BV-TV**  
**Caddick Construction**  
**CityFibre**  
**Colas Ltd**  
**CSR Accreditation**  
**Curveblock**  
**Drax Power Group**  
**EKFB**  
**Enjoy Digital**  
**Environment Agency**  
**ENGIE**  
**Eurovia**  
**FusionBlu**  
**Grand Central Rail**  
**Genovate Power Solutions**  
**GXO Logistics**  
**Harworth Group**

cont'd



Highways Today  
Jaguar Cars  
Kamec UK  
Kier Group  
Leeds Cares  
Leeds Children's Hospital  
Leeds City College  
Leeds City Council  
Leeds Trinity University  
Mole Valley Asset Management  
Northern Powergrid  
NSPCC  
Persimmon Homes  
Q Parks  
Ringway  
Sevensun Agency  
The Business Desk  
Town Centre Securities  
Unity Club  
University of Bradford  
University of Leeds  
Verity Group Ltd  
Volker Rail  
West Yorkshire Consortium  
of Colleges



Books available from all  
good book stores and online

## Musical Aire



**ISM**  
MEMBER

Want to learn or improve saxophone, clarinet or flute?  
I offer day and evening lessons for adults and children in Adel  
Free taster session with no obligation  
Fun, patient and individual tuition, based on what you want to achieve  
Contact me to see how I might help:  
[Caroline@musicalaire.co.uk](mailto:Caroline@musicalaire.co.uk) 07493 327315  
Professional flute and harp duo "Chestra" also available  
for weddings and events  
Member of the Incorporated Society of Musicians

**BUILDING, JOINERY  
AND ROOFING CONTRACTOR**  
Catering for all your building requirements

Over 35 years in  
the trade  
All works  
guaranteed

For a free inspection  
and quotation  
please call Alan on  
07856 535 677



# ROXTON TREE SERVICES

## ALL ASPECTS OF TREE WORK UNDERTAKEN

Large and dangerous trees safely removed      All work carried out to British Standard 3998

Crown lifting and general pruning

Tree Preservation Orders checked

Hedge reduction/removal

Seasoned logs for sale (free delivery)

Stump grinding

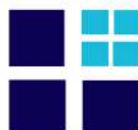
Woodchip available

Fully Qualified and Insured

## FREE QUOTATIONS

tel: **0113 268 2235** mobile: **07773 298 770**

e-mail: **roxtontreeservices@gmail.com**



**Adel Wills Ltd**  
For Wills and Lasting Powers of Attorney

## Lasting Powers of Attorney and Wills

- Friendly and Professional Advice
- Home Visits
- Local Independent Business
- Fixed Fees

Please call **Jane Wintringham** BA (Hons) Law, MIPW  
on  
07931 369813 or 0113 305 3604  
email: [jane@adelwills.co.uk](mailto:jane@adelwills.co.uk)  
[www.adelwills.co.uk](http://www.adelwills.co.uk)



A member of the Institute of Professional Willwriters  
This firm is compliant with the IPW Code of Practice

## ADEL WAR MEMORIAL ASSOCIATION

### Adel Sports and Social Club



**Archery, Badminton, Bowls,  
Cricket, Football, Hockey,  
Lacrosse, Snooker, Softball,**



**Squash and Tennis are all played at Adel**

**Most sports have Junior Sections  
with fully qualified coaches**

**Social Membership just £15 per year**

**Adel Players produce 3 plays per year**

**Tickets can be obtained from  
[boxoffice@adel-players.org.uk](mailto:boxoffice@adel-players.org.uk)  
or 0113 275 5585**



## Rooms available for Hire

**From the main hall for weddings and special  
events to smaller rooms for office  
training days, children's parties,  
meetings etc.**



**Lounge and bar facilities available for  
Funerals and events during the day**

**For details contact Eszter Saxton on  
**07765 427 290** or  
[awma.manager@virginmedia.com](mailto:awma.manager@virginmedia.com)**

**Alternatively please check out our Web site  
[www.adelclub.co.uk](http://www.adelclub.co.uk)**

**Improve,  
Don't Move!**  
Maximise the value of your home.

- SPACE-SAVING - MAXIMISE YOUR GARAGE HEADROOM
- SECURITY-ENABLED AUTO-LOCKING SYSTEM
- CHOICE OF 21 COLOURS TO MATCH YOUR HOME
- REMOVAL AND RECYCLING OF YOUR OLD DOOR
- DEDICATED AFTER-CARE TEAM

**GAROLLA** **0113 347 0448**  
**ROLLER SHUTTER DOORS**   
**LINES OPEN 7 DAYS A WEEK**  
[www.garolla.co.uk](http://www.garolla.co.uk)






**BESPOKE ELECTRIC DOORS MANUFACTURED IN THE UK**

**FREE FITTING  
PAYMENT ON  
INSTALLATION**

**PRICED  
EXAMPLE £895**  
COMPACT • UP TO 2.4M

**GAROLLA ★ PREMIUM**  
Increased Security • Double Insulation  
One-Touch Close

**PRICED  
EXAMPLE £1,990**  
PREMIUM • 3.4M • ANTHRACITE

**MSC Joinery Building & Roofing Services**  
Proudly supports Adel Bells



**LABC Award-winning builders with over 35 years experience.**  
Quality workmanship guaranteed

07802816611 ♦ 07971810690  
 msc.cornell@btinternet.com  
 msc-building.co.uk

**Ha! Ha!**

The best of thymes, the worst of thymes.

### Red Herring

C	A	P	R	I
O	R	L	O	N
B	E	A	U	S
R	A	N	G	E
A	S	S	E	T

The red herring is ESTER

### Only 5 Clues Across

1. GENEVA
3. TRUANT
4. UNCLAD

### Down

1. GATEAU
2. ASTRID

**6 Floors of Beds & Bedroom Furniture**  
**Bedside Manor**  
 108 – 112 Burley Road Leeds LS3 1JP  
 (Behind Yorkshire Television)  
 0113 24 25 600 Email: BSM6floors@aol.com  
 See us on Facebook

Our family business has been supplying quality beds and bedroom furniture to discerning customers for over 20 years.

We know just how important it is for you to make the right choice for sleeping comfort and to suit your lifestyle.

Our personal service assures you of the best advice to help you select from our wide ranges of mattresses, divan beds, bedframes and bedroom furniture.

Bespoke options are also available so you can achieve the look to complement your bedroom

Come along and see us: We're open 7 days.

**Bring this with you and receive an extra 10% off\***  
 \*Excludes Sale Items



## A superb new care home



Adel Manor is now open. New Care has opened the doors to a stunning new care home, situated on Otley Road in Adel. Surrounded by countryside, Adel Manor is a peaceful place to call home.

The care facility offers outstanding person-centred residential, nursing, dementia and respite care services, combined with a comprehensive menu of daily activities designed to stimulate residents and encourage independent living.

There are 74 fully furnished bedrooms, each benefiting from an en-suite wet room, plus several stylish communal lounges, dining rooms and quiet reading rooms, as well as beautifully landscaped gardens.

For further information, or to make an appointment to view **Adel Manor** contact the team on **0113 841 1000** or email **enquiries@newcarehomes.com**.



**Adel Manor Care Centre** Adel Gardens, Otley Road, Leeds, LS16 7FP  
newcarehomes.com



## BUILDING COMPANY NO JOB TOO SMALL

ALL WORK CARRIED OUT  
TO A PROFESSIONAL STANDARD



- RENDERING
- PLASTERING
- PAINTING
- ARTIFICIAL GRASS
- BOX POINTING
- PATIOS



FOR FREE  
QUOTES & ENQUIRIES  
**075 14 276 756**





# Locksmith & Security Installer

- Lock Upgrades
- CCTV & Alarm Installation
- Door & Window Repairs
- Safe Fitting
- Call for a free security assessment

Call Andy: 07721876571

**LEMONLOCKSMITH.CO.UK**

**DBS CHECKED - CITY & GUILDS CERTIFIED**

**Covering Stanley & Nearby Areas**

## LAWRENCE GAUNT OPTICIANS

Ireland Wood Surgery  
Iveson Approach, Leeds, LS16 6FR

Professional  
Comprehensive Eyecare  
Family Opticians since 1978  
Personal Service  
Friendly Independent Advice

**0113 267 9547**

info@lawrencegauntopticians.co.uk  
www.lawrencegauntopticians.co.uk  
*professional eye care with a smile*

Full wheelchair access  
Free on-site parking  
Home visits available

## Ribbons INTERIORS

curtains...blinds...soft furnishings...upholstery

10 The Crescent, Adel, LS16 6AA  
tel: (0113) 3457424  
www.ribboninteriors.co.uk

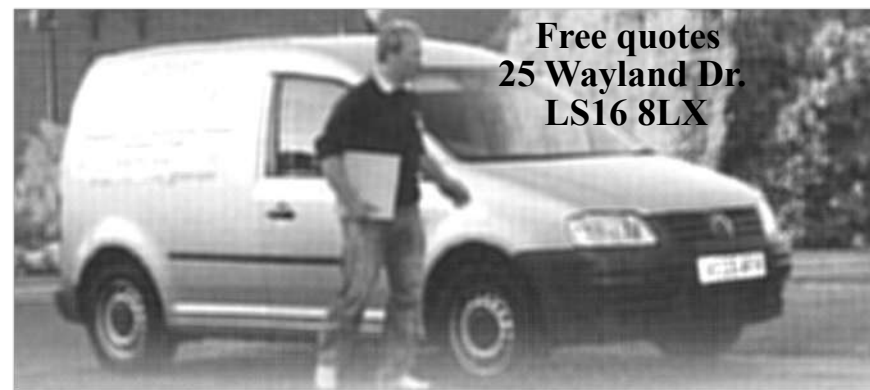
affordable, aspirational interior design  
based in Adel, from individual pieces to  
full room makeover

now stocking paint from Hicks & Weatherburn



**RIBBONS INTERIORS**

design...make...source...fit



Free quotes  
25 Wayland Dr.  
LS16 8LX

## ADEL TILING SOLUTIONS

Brian Hurst has over 20 years experience in tiling. If you are looking for an experienced local tiler to get the job right, first time, call

**0113 368 9769** or **07712 896711**, email: **brian\_hurst\_@msn.com**

No job too big or too small. Cleaning & re-grouting/ silicone removal, ceramic floor & wall tiling inc. mosaic & stone products.

## ADEL GARDEN CARE

**Is your garden in need of some extra care?**



We are experienced in all aspects of plant care including border maintenance, weeding, pruning, training climbers, wildlife gardens, renovating shrubs.

We install fencing & decking, jetwash patios, revitalise ponds.

**Contact us for a free estimate:  
07815 206610**

[www.adelgardencare.co.uk](http://www.adelgardencare.co.uk)

[enquiries@adelgardencare.co.uk](mailto:enquiries@adelgardencare.co.uk)

## SLATER'S FUNERAL SERVICE

**Genuine Independent Family Business  
Established 1884**

**138 years caring for the deceased and  
bereaved families, offering a personal,  
caring and dignified  
24 hour service covering all areas**

**Oakford House, 291 Low Lane, Horsforth,  
LS18 5NU**

**Tel 0113 258 2395**

[www.slatersofhorsforth.co.uk](http://www.slatersofhorsforth.co.uk)



### **LOCAL PROFESSIONAL LOCKSMITH**

**24 HOUR CALLOUT WITH NO CALL OUT CHARGE**

**10% DISCOUNT FOR OAP's AND STUDENTS**

**New Locks Fitted - Changed - Replaced Burglary Repairs & Boarding Up**

**Snapped Keys in Locks - Fixed Defective Locks Repaired Replaced**

**Locked Out? Rapid Response – 20 MINUTES**

**UPVC Window & Door Specialists**

**All Types of Locks & Keys Supplied British Standard Locks Fitted**

**TEL:07947160788**

## **Matthew Holmes**

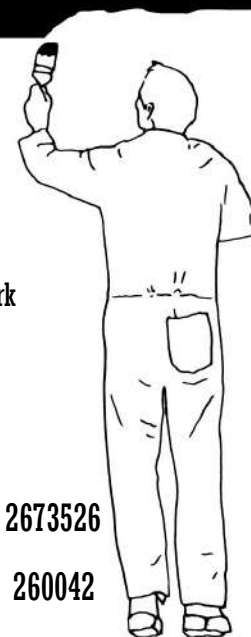
*Domestic and Commercial  
Painter and Decorator*

High quality work  
Clean, reliable, friendly  
Over 26 years experience

Interior & exterior work  
Paper hanging  
Coving

4 New Adel Avenue,  
Adel, Leeds, LS16 6BE  
Email: [mholmesdecorating@live.co.uk](mailto:mholmesdecorating@live.co.uk)

Home: 0113 2673526  
Mobile: 07725 260042





## Woodends Butchers of Adel

471 Otley Rd Leeds LS16 7NR

## Free Local Home Delivery Service Now Available

Visit our shop or telephone

**01132 673602**

to place your order.

We offer a bespoke butchery service,  
whereby we will process your meat  
in line with your exact requirements.

All of our beef, pork, lamb & poultry  
is sourced from within Yorkshire.

## Local health and fitness club



Offering a friendly gymnasium, fitness  
studio, leisure pool, spa pool, steam and sauna  
rooms

Come along for a free trial  
Or for more information on membership call

0113 2699010

Hannah.bullock.020@jupiterhotel.co.uk



Feel Good Health Club  
Mercure Leeds Parkway  
Otley Road  
Bramhope, Leeds LS16 8AG



**MISTY MAX**  
MISTY WINDOW REPAIR



**BEFORE** **AFTER**

Misty / Steamed Up / Foggy Glass? **07721876571**  
[mistymax.co.uk](http://mistymax.co.uk)

# Adel Pharmacy

141 Long Causeway  
Adel Leeds

♦ Enquiries, please phone **0113 230 0351**

♦ Excellent parking

♦ Collections & delivery of prescriptions where necessary,  
free of charge week days only

Monday	8.15-12.30 14.00- 18.00	Thursday	8.15-12.30 14.00-1700
Tuesday	8.15-12.30 14.00-17.30	Friday	8.15-12.30 14.00-18.00
Wednesday	8.30-12.30	Saturday and Sunday	CLOSED

## Aerial Solutions

**A Family run Leeds business with 27 years experience**

**All work guaranteed**

**Debit & Credit card payments welcome**

**7 Day Service**

**Extra TV/Sky points from £40**

**Dish & Freesat Installations**

**CCTV Installations**

**OAP Discount**

**Ring 0113 512 6127**

**FREE 0800 328 7517**

**\*on all supplied & installed equipment**



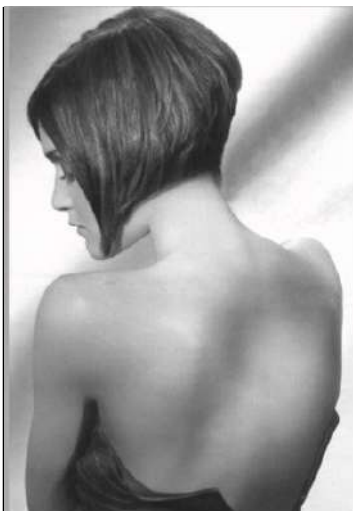
## D. P. A. FLETCHER (BUILDERS) LTD

**All aspects of Building, Joinery  
& Property Repairs**

**(with over 30 years of experience)**

**Tel: 0113 263 0515**

**[jackie.dpafletcherbuilders@gmail.com](mailto:jackie.dpafletcherbuilders@gmail.com)**



## Padd Hair Studio

6 The Crescent  
Adel  
Leeds LS16 6AA

**Opening Hours**  
**Tues 9am—3pm**  
**Wed 9am—4pm**  
**Thurs 9am—7pm**  
**Fri 9am—4pm**  
**Sat 8am - 2pm**

**Tel 0113 267 4388**

We are a well-established friendly salon run by Andrea Petrou for over 12 years. We are tucked away on a little parade of shops on The Crescent behind the Co-op on Otley Road.

There are four stylists, two assistants and a junior. Our clients are **men, women, teenagers and children**. We have entire families who have over the years become friends and we have enjoyed watching the younger members growing up.

**SPECIAL INTRODUCTORY OFFER FOR  
ALL NEW CUSTOMERS**

**Offer available through the week  
Cut & Style for just £25.00**

**QUOTE ADEL BELLS TO CLAIM YOUR VOUCHER**

**Find us on Facebook**



R. Pearson  
Electrical and Plumbing

R Pearson Electrical and Plumbing  
All aspects of Electrical and Plumbing work undertaken

Consumer unit upgrades/ periodic testing  
Internal and External Electrics and Lighting  
Electric and Gas Cooker/Hob Supply and Installation  
CCTV Security Systems and Intruder Alarms  
Flat Screen TV and AV Installation  
Fault finding and rectification  
Gas Safe Repairs  
Boilers and Boiler Services  
Leaking Taps  
Radiator Changes  
Bathrooms  
Outdoor Taps



**Free Quotations**  
**Tel: 07796000600**

**[enquiries@rpearsonelectricalandplumbing.co.uk](mailto:enquiries@rpearsonelectricalandplumbing.co.uk)**  
**[www.rpearsonelectricalandplumbing.co.uk](http://www.rpearsonelectricalandplumbing.co.uk)**



SERVING FAMILIES FOR GENERATIONS



**FUNERALS FROM £995\***  
Unattended Funerals | Chapel Service  
Attended Funerals

**J. E. Spence Funeral Service**  
Lawnswood Funeral Home, Otley Road,  
Adel, Leeds, West Yorkshire LS16 8AA  
0113 268 2842

We're here for you anytime.  
Whatever your wishes or budget,  
we can provide a funeral to suit you.

**J. E. Spence**  
*Taking the greatest care  
in and around Leeds*

**DIGNITY**  
FUNERAL SERVICES

dignityfunerals.co.uk/local

\*Pricing is correct at time of going to print and is subject to change. Price stated is for an Unattended Funeral



## DOES YOUR CHILD NEED SUPPORT WITH LITERACY AND NUMERACY?



I offer tuition for 4-7 year olds,  
am experienced, patient and  
believe that learning can be fun!  
Police checked (D.B.S)

Please contact **Glenis Moss** on  
**07960 838116**



**Proud to be  
supporting our  
local community**

**READY TO TAKE YOUR CALL**  
**8AM-8PM**  
**7 DAYS A WEEK**

## APplastering



Fully qualified plasterer  
over 30 years experience  
Fully insured  
All plastering work undertaken  
Internal and external  
No job too small from  
patching to full house

For a competitive quote  
call Andy on 07814705238



**QUBIX**  
PLUMBING & HEATING

**PLUMBING  
& HEATING**

Here at Qubix Plumbing & Heating we offer our services  
largely to domestic household. We cater to everything  
that is plumbing, gas, heating, bathrooms and boilers.

- All Plumbing & Gas Works
- Plumbing Maintenance
- Emergency Services
- Bathroom Installations
- Boiler Quotes
- Boiler Installation
- Boiler Servicing
- Boiler Repairs
- Heating Repairs
- Leak Repairs
- Power Flushing
- Gas Safety Certificates
- Landlord Certificates
- & More...

Please contact us for more details  
**07761 215868**

@ Qubix Plumbing & Heating  
enquires.qubixplumbing@gmail.com

Facebook



Specialist Treatment For:

- Stroke
- Parkinson's Disease (PD)
- Multiple Sclerosis (MS)
- Dementia
- Falls
- Spinal Injuries
- Brain Injuries
- Pain
- Functional Neurological Disorder (FND)
- Movement Disorders
- Cerebral Palsy
- Developmental Coordination Disorder (DCD)

If you would like to arrange an appointment with one of our specialist physiotherapists at our clinic in Rawdon or in your own home please call us on 0113 250 8833, email us at [practice@leedsneurophysiotherapy.co.uk](mailto:practice@leedsneurophysiotherapy.co.uk) or contact us via our website at [www.leedsneurophysiotherapy.co.uk](http://www.leedsneurophysiotherapy.co.uk)



**Trade and DIY Welcome**

Our family business supplies a wide range of garden and landscaping materials from our quarry in Bramhope, Leeds



Topsoil, sand, gravel, slate and many types of stone. Available loose or in bags. Collect or delivery.

**Blackhill Quarry**  
Kings Road, Bramhope, Leeds LS16 8BG  
T: 0113 267 4386  
Open: Mon-Fri: 7am-5pm, Sat: 7am-1pm

**www.MONEBROSdiy.co.uk**



HELP YOUR CHILD REACH THEIR  
**FULL LEARNING  
POTENTIAL**



Primary - Secondary • Qualified Teachers • Personalised Learning Programmes

**At Kip McGrath, our focus is to help your child reach their full potential.**

We make learning fun and engaging to improve results. You will receive progress reports and updates to track your child's improvement.

English and Maths Tuition  In Centre  Online

Book a **free** assessment today

Adel 07815 760509

485 Otley Road LS16 7NR

[kipmcgrath.co.uk/leedsadel](http://kipmcgrath.co.uk/leedsadel)





## North Leeds Physiotherapy and Sports Injuries Centre

**Sarah Beldon MCSP HCPC**  
The Police House  
Church Close  
Pool in Wharfedale  
LS21 1LN

**Please ring 07908 151 241**  
Daytime and evenings available  
Home visits still available within reasonable  
distances.

**APPI Physiotherapy led modified Pilates Classes in  
Adel Stables—days or evenings**



Female painter and  
decorator  
20 years' experience.  
Professional and reliable  
Tel: 07398 882 306 or  
Email  
harperddiy@gmail.com  
**Taking bookings for  
2023**

**BLUEBERRY**  
AUTOMATION



Supply & install **Garage Doors**, fully  
automated, Sectional, Rollers, Up&Over  
& more, from new installs to repairs we  
are family run with over 20 years'  
experience. All doors have built in safety  
& courtesy light with 1000's colours,  
**Police rated** & Insurance approved as  
standard!

Now recognised as Yorkshire's leading  
Somfy expert and home automation  
specialist, we also supply & install  
motorised **Awnings & Blinds**

Web: blueberryautomation.co.uk  
Email: blueberryautomate@gmail.com  
Phone: 07479 662021 0113 232 9463

# CHIROPODY

**Nick Simpson BSc Podiatry (Hons) MCPod**

An essential health care service

at

**WELCOME IN**

Community Centre  
55 Bedford Drive (off Tinsill Lane)  
Ireland Wood  
LS16 6DJ

**Tel. 07751 078787**

(by appointment only)

Health & Care  
Professions Council  
&  
Simply Health registered



## Family Run Italian Restaurant

429 Otley Rd,  
Adel, LS16 6AJ  
Tel: 2672671  
for reservations

Ristorante  
**SORRISO**

View our menu on line at  
[www.sorrisoleeds.co.uk](http://www.sorrisoleeds.co.uk)

### Opening Hours

Monday-Thursday 12 - 2.30pm  
and 5 - 9pm  
Friday & Saturday 12 - 9.30pm  
Sunday 12 - 9pm

**Takeaway delivery available  
every day**

## Advertising

The magazine is published 10 times a  
year and goes out to 440 homes except  
for June when we circulate the whole  
parish  
(2800 homes)

Full page £140 per annum

Half page £80 per annum

Quarter page £50 per annum

+ £20 for alterations

For further information contact:

**Beryl Thompson**  
10 New Adel Gardens,  
Leeds LS16 6BD



**0113 267 3875**  
**beryl890@btinternet.com**

## ***Index of Advertisers***

<b>Aerials &amp; Satellites</b>	
50	Aerial Solutions
<b>Beds</b>	
40	Bedside Manor
<b>Home Improvements</b>	
36	Alan
39	Garolla Roller Doors
39	MSC
40	Ribbons
42	Hinton's
49	Window Repairs
51	DPA Fletcher Ltd
54	APplastering
57	Blueberry Automation
<b>Building Supplies</b>	
55	Mone Bros.
<b>Education</b>	
36	Musical Aire
54	Glenis Moss Tuition
56	Kip McGrath
<b>Electrical &amp; Plumbing</b>	
52	Pearson
<b>Estate Agents</b>	
53	Manning Stainton
<b>Food Outlets</b>	
28	Caring for Life
47	Woodends, Butcher
58	Ristorante Sorriso
<b>Funeral Directors</b>	
45	Slater's
53	J E Spence Ltd
<b>Gardening Services</b>	
37	Roxton Tree Services
45	Adel Garden Care
<b>Hair and Beauty</b>	
51	Padd Hair Studio
<b>Health Care</b>	
34	Adel Manor Care Home
47	Hearing
48	Mercure Health Club
55	Leeds Neurophysiotherapy
57	North Leeds Physiotherapy
58	N. Simpson, Chiropodist
<b>Leisure Interests</b>	
34	Meet the Cones
38	Adel War Memorial Association
<b>Locksmith</b>	
43	Locksmith & Security Installer
46	The Lockdoc
<b>Opticians</b>	
44	Lawrence Gaunt
<b>Painters &amp; Decorators</b>	
46	Matthew Holmes
57	Harperddiy
<b>Plumbers</b>	
54	QUBIX
<b>Pharmacies</b>	
49	Adel Pharmacy
<b>Tiling</b>	
44	Adel Tiling Solutions Ltd
<b>Wills</b>	
37	Jane Wintringham



## **Church Services May**

<b>Wed 3rd</b>	11am	Holy Communion
<b>Fri 5th</b>	1.30pm	J Js (for the under sixes)
<b>Sunday 7th</b>		<b>Fifth Sunday of Easter</b>
	8.30am	Holy Communion (BCP)
	10am	Parish Communion
	6.30pm	Evensong (BCP)
<b>Wed 10th</b>	11am	Holy Communion
<b>Sunday 14th</b>		<b>Sixth Sunday of Easter</b>
	8.30am	Holy Communion
<b>!!!</b>	<b>NO TEN 0'CLOCK SERVICE TODAY</b>	<b>!!!</b>
<b>Wed 17th</b>	11am	Holy Communion
<b>Thurs 18th</b>		<b>Ascension Day</b>
	3.15pm	Holy Communion in the Stables, with tea & coffee
	7.30pm	Service of Eucharist
<b>Sunday 21st</b>		<b>Seventh Sunday of Easter</b>
	8.30am	Holy Communion (BCP)
	10am	All Age Service with Communion
	6.30pm	Evensong (BCP)
<b>Wed 24th</b>	11am	Holy Communion
<b>Sunday 28th</b>		<b>Pentecost</b>
	8.30am	Holy Communion (BCP)
	10am	Parish Communion
<b>Wed 31st</b>	11am	Holy Communion

**Junior Church** is held during term time. The children start in Church at the 10am service with their families, they then leave with the leaders and, after their own input in the Stables, re-join the congregation for communion and the last part of the service

On the **3rd Sunday** there is a 10am All Age service, with communion, and children are welcome for the whole of the service in church.