



# ADEL BELLS

Parish Magazine 60p



## October 2023

**Rector** Revd Alison Battye 25 Church Lane Adel LS16 8DQ  
alison.battye@leeds.anglican.org 267 3676

**Churchwardens** Anne Andrews 32 Ancaster Road LS16 5HH 275 5585  
anne.andrews@ntlworld.com

Alison Howarth Apt1, Garmont Court LS7 3RU 262 4622  
ahowarth@hotmail.com

**PCC Secretary** Andy Neal 468 Otley Road, LS16 8AE 07415 424 964  
adelpccsecretary@gmail.com

**PCC Treasurer** Bob Holloway 10 Adel Pasture LS16 8HU 267 9360  
bob@hollowayassociates.co.uk

<b>Safeguarding Officer</b>	James Moxon	07984164782
<b>Planned Giving</b>	Helen Hallett	217 8845
<b>Choirmaster</b>	Chris Cunliffe	267 6767
<b>Funeral Verger</b>	Iain F. Welsh	267 9364
<b>Assistant Funeral Verger</b>	Lucy Best-Shaw	217 2963
<b>Flower Rota</b>	Lucinda Lillford	07795685870 (evenings only)

<b>Environmental Officer</b>	Thang Tang	adel.eco.church@hotmail.com
<b>Wedding Verger</b>	Sue Smith	261 0349
<b>Assistant Wedding Verger</b>	Gillian Batcup	267 7223
<b>Local History Enquiries</b>	Val Crompton	225 9142
<b>Adel St John School Head Teacher</b>	27 Wayland Drive LS16 8LX	
<b>Parish Hall Bookings</b>	Mr Peter Dalrymple	261 1804
<b>Adel Bells Editor</b>	Loveday Loveridge	07974 321466
<b>Magazine Advertising</b>	Marjorie Cole	261 0069
<b>Distribution:</b>	Beryl Thompson	267 3875
<b>Website:</b>	10 New Adel Gardens LS16 6BD	
	Sandra Lavery	261 2008
	Trevor Cole	261 0069

**Adel Bells**  
(Please email copy by **10th of the month**)

adelbellscm@gmail.com

**Parish Hall Bookings**

adeloldstables@gmail.com

**Church Website**

www.adelparishchurch.org.uk

Follow us on Facebook or Twitter

Adel Parish Church



**The Parish Church of St John the Baptist, Adel**  
 Enquiries including Home Communion, Baptisms, Confirmation,  
 Weddings, Funerals; please look at the church website  
[www.adelparishchurch.org.uk](http://www.adelparishchurch.org.uk)

## Contents

### Our Church

Rector Alison's Letter	6
For your diary	7
Also in October	8
In Brief	9
Praying for . . .	11
Penny's Ponders	12
Environmental News	13
Faith Lunch	14
Baby Loss Awareness Week	15
Harvest Activity for Kids	16

### For your Interest

Nature Notes	17
National Trust	18
Joyce Hill	19
Puzzles	20
Criss-Cross Puzzle	21
In Your Garden	23
History & Activity Groups	24
OPAL	25
A Summer Experience	26
York Gate Update	27
What's On	29
Flower Show 2023	30
QE Corner	31
Barry Anderson	32
Billy Flynn	33
List of Advertisers	59



### Adel PCC Members 2023–2024

Anne Andrews, Paul Barker,  
 Lucy Best-Shaw, Bruce Buchan,  
 Marisa Clayton, Marjorie Cole,  
 Tina Gledhill,  
 Bob Holloway, Alison Howarth,  
 Ruth Hutton, Sarah Johnson,  
 Jenny Jones, Mary Lerner,  
 Loveday Loveridge,  
 Andrew Neal, Mark Seaward,  
 Sue Smith, Carole Smithies,  
 Thang Tang, Mike Tunstall

### Magazine Editors

Marjorie Cole  
 Chris Madeley

### Illustrators

Val Crompton  
 Marjorie Cole

## Parish Registers

### Weddings

15th July

Anna Horton and Andrew Devlin

1st September

Rae Charlotte Ramsden and  
 Daniel Harrison

### Marriage Blessing

7th August

Georgie and Marc Macmillan

### Baptisms

23rd July

Joshua James, son of Rebecca and  
 Samuel Clark

13th August

Harriet Claire, daughter of Rachel  
 Hannah and Arran Gordon Stevens

20th August

Noah Jack Redvers, son of  
 Sophie Rebecca and  
 Nicholas Peter Corcoran

### Funerals

17th July

Ronald McAllister

18th July

Muriel Huntley

21st August

Paula Brown

22nd August

Elisabeth Wigin

23rd August

Michael Jackson

## Burial of Ashes

24th July

Lorna Clark



## Festivals & Feasts

15th October

Harvest Festival

18th October

Luke the Evangelist

28th October

Simon and Jude, Apostles



Open our hearts, O Lord, and  
 enlighten our minds, by the grace  
 of your Holy Spirit, that we may  
 seek what is well-pleasing to your  
 will; and so order our doings after  
 your commandments, that we may  
 be found fit to enter into your  
 everlasting joy, through Jesus  
 Christ our Lord.

**Bede** (c. 672—735)

**Church Open for Visitors**  
 Monday and Saturday 1.45pm to 3.45pm





**Part of Christ's family, welcoming  
everyone, sharing God's love  
and being a voice of hope**

## From the Editor

**W**asn't it a funny sort of summer? Wasn't August a bit of a let-down? I wonder if you did anything memorable, as did David Blakeley who wrote for us about a day spent watching the tennis at Wimbledon. It is always good to receive unexpected contributions for the magazine, so please don't be afraid to step forward and write something yourself, on any subject you choose.

September was often warm and sunny, but October is yet to prove itself. However, there are lots of events to tempt you out of your homes, not all of them being weather-dependent.

At Adel Church we are supporting Baby Loss Awareness Week. If you or anyone you know have experienced pregnancy or baby loss, tell them about what is going on here in the week 9th to 15th October. Please see p.15 for details. We also have our annual Memorial Service on Sunday 29th October, for those of you who have lost a loved one.

On a lighter note, there is much going on socially and in the form of entertainment: our Faith Lunch for Harvest Festival weekend, a Harvest Activity Event for our younger church members, a concert in which two of our congregation will be singing (James and Siân Moxon), a concert by JazzLyrical, a play by Adel Players and more besides. All information about these events can be found elsewhere in the magazine.

We know that many of you benefit from being able to watch our Sunday 10am service online, thanks to YouTube. It is appreciated for all sorts of reasons. We have a small team of volunteers ( see p. 11) who operate the camera, as Hugh explains, but it would be good to have one or two more on the team. It is not a hard task, you do not need to be a computer wizard and once you've learned how to do it it's like riding a bike! Just one session watching one of the team will be enough, so please get in touch if you can. You can ring me and ask to speak to Trevor or send an email to [adelparishchurch@gmail.com](mailto:adelparishchurch@gmail.com).

**Marjorie Cole**  
0113 261 0069

## Rector Alison's Letter

Dear Friends

October sees our annual Harvest Festival. The safe bringing in of the harvest will have been celebrated in Adel since before our church was built; and in the church for many hundreds of years. A hundred years ago, harvest will have brought the whole community together: in the actual gathering of crops; in harvest dances and suppers; in decorating the church and joining to give thanks to God.

Older readers will remember other milestones that marked the passing of the year, and involved virtually the whole community. It might be interesting to hear some of those reminiscences in the pages of this magazine.

It is a long time since Adel could be described as a village, and the relentless pace of modern lives means there are fewer times when we pause together to remember or celebrate.

I don't think this is because such occasions are less important, but now we are mostly removed from the land and the cycle of the year and so we have fewer common events to celebrate. Actually, I think this means events which do bring us together are even more important today.

This was brought home to me earlier

this year when the Rob Burrow marathon came through Adel and past the church. It was amazing what a wonderful, uplifting day it was even for those of us who merely made banners, served tea or stood at the roadside and cheered.

We are lucky then, that although Adel is no longer a village, it is still a community. The late summer and early autumn have seen the chance to join in Adel Show, Adel Beer Festival and view the work of Adel Artists. Whether we are helping to organise something, taking part, or just going along to see what it's all about, there is something very healthy about belonging to a community.

Even when we can no longer physically get to such events, it does us good to hear about them. So, if you have never written for Adel Bells before, do consider sharing an account of any community events you are involved in.

I suspect though, that community events have a power beyond the 'feel good' factor. I hope never to have this theory tested, but I think a community that celebrates together is stronger if it is ever called on to face a tragedy together.

As a parish church we hope to play our part in bringing the community together. Harvest festivals may not be

what they once were, but we will still be gathering to thank God for all his gifts. This October we will also be marking Baby Loss Awareness Week. These opportunities to face joys and sorrows together are our offering to the community of Adel, do consider joining us.

With love and prayers

**Alison**

### **Adel Churchyard Appeal Update**

This year we launched an appeal to raise money for our churchyard and, in particular, the care and maintenance of the trees, some of which will need felling in the near future because of ash dieback. Our goal is £25,000 and so far we have raised **£5,489.00** - a fantastic start.

A huge thank you to all those who have made a donation. This will mean we can start to make improvements this year. We still have a long way to go, so if anyone would like to help maintain our beautiful churchyard, please use the QR code or this link:-

[tinyurl.com/adelchurchyard](https://tinyurl.com/adelchurchyard)



Many thanks,

**The churchyard committee**

### **For your diary**

#### **7th October**

Rake, Cake and Chat  
9am to 11.30am  
In the Churchyard

#### **15th October**

Harvest Festival and Faith Lunch

#### **28th October**

7.30pm  
Concert in Church  
by JazzLyrical

#### **18th November**

Tunes from a Tropical Island  
(Castaway –Chris Cunliffe)  
7pm In the Old Stables

#### **9th December**

Christmas Coffee Morning  
10.30am

#### **16th December**

3pm in Church  
Concert by Leeds Guild of Singers

#### **Memorial Service 6.30pm 29th October**

Our annual service of words and music, with the chance to remember loved ones by name and light a candle in their memory. The service will be followed by light refreshments in the Stables. Everyone welcome.

### **Also in October . . .**

#### **Baby Loss Awareness Week 9th to 15th October**

See p. 15

#### **Harvest Festival**

#### **Sunday 15th October**

Faith Lunch after the 10am service in the Old Stables  
See p. 14

#### **Bible Study**

#### **10 am in the Stables**

Thursday 12th October  
Thursday 26th October

#### **Memorial Service 29th October**

6.30pm  
See p.7

#### **Prayer Meetings**

#### **10am every Wednesday In church or at home**

Praying this month for:  
Baptism Team  
All who cover services, especially  
Ian Johnston  
Live-streaming team



## In Brief

Last month's piece 'Down Memory Lane' stirred some happy memories in some readers' hearts. Here is what they said:-

*"I enjoyed reading your piece on the pond that used to be at the bottom end of the Stables lawn. I and fellow urchins from the inner city often used to catch the tram up to the Lawnswood terminus (1½ old pence from Hyde Park Corner) and "hike" around Adel and Eccup. In winter, we had great fun "skating" – ie, sliding on the pond when it was well frozen (skates not being known within our community).*

*Whenever I pass the former site of it now I always feel a little sad that it is no longer there – nor are the various animals grazing in the field across the road in front of the farm, which I now know as York Gate."*

### Mac Burnell

*"As for the Rectory Pond... yes, as children we went to feed the ducks - even during the war when food was scarce, we'd find a crust or two. We were always told the "stables" was the Tythe Barn, and the pond was for the ducks and geese brought as tythe."*

### Jennifer Ash



## The 100 Club Draw

### July

1	Beryl Stoker	£80
2	Vanessa Hinton	£40
3	Betty Pearson	£30

### August

1	Sarah Johnson	£80
2	James Moss	£40
3	Neil Garratt	£30

## Can you believe it?

I saw this sign on the bus into Leeds in August. It was on the digital screen that many buses have now. It is an advert for an app. What does it say? What does it mean?

NOW WHERE YOUR  
US IS & HOW MANY  
EATS ARE FREE

You may be puzzled by this, but this is what it should have said:-

KNOW WHERE YOUR  
BUS IS & HOW MANY  
SEATS ARE FREE

The advert was wrongly positioned on the screen.

### Hilary Taylor

## Praying for . . .

*Weekly prayer meetings in church or at home, started last autumn and in February Alison suggested that each month we choose three church groups or teams to pray for. Saying a prayerful thank you to people can have a powerful effect, but knowing something about each group can be very helpful. So in October we will pray together for:-*

### Those who cover services, especially Ian Johnston

It's a strange life being a retired priest. ...no longer having a regular commitment to weekly services (and that for me meant being latterly with the Parish Church in Killinghall) and the many other things and responsibilities that come with being licensed.

But that doesn't mean that a retired priest's life is not busy - far from it. There are many parishes that have vacancies and clergy who need to find cover for holidays etc. I am very fortunate to be able to share my ministry in Adel, in my role as visiting clergy, with a congregation I love and with whom I've shared so many things over the last 10 years.

The joy of presiding at the Eucharist never fades, whether for a full congregation on a Sunday morning with choir and singing, or with a smaller quiet congregation on a Wednesday. I also appreciate the

opportunity to preach and sharing leading worship with Alison.

When not at Adel, I am also asked to help out with congregations unknown to me in parishes that need cover, often in villages I have never been to and sometimes at short notice (having old sermons can come in very handy!) Have 'Permission to Officiate' will travel.

And, appearing to others to have more time on my hands, I have been persuaded to take on other responsibilities. These include being a member of the organising committee of the Harrogate School of Theology and Mission. If you come to one of our lectures online (see [hstm.org.uk](http://hstm.org.uk)) you may see me as Zoom host. I also lead a weekly Bible Study in a small village to the North of Harrogate and am about to lead a study of John's Gospel too.

So, with all these other calls on a retired priest's time (and there could be many more), it is a comfort to feel part of Adel as a visiting priest and it is very encouraging to me to know that the congregation prays for me. We all need the support of the prayers of the church community. Your prayers help me (and Jacqueline) to continue to feel part of and supported by the Adel community.

### Ian Johnston

## Baptism Team

There is a small group of church members who act as support to Revd Alison at baptisms: Anne Andrews, Karen Baylis, Sue Smith and myself. After Revd Alison has visited the family, one of us will contact them to answer any questions they may have. We collect from the vestry and write the child's name and baptism details on the cards given out to the parents and Godparents. Just before the baptism we prepare the font, placing ready a jug of warm water, and a white cloth, called a purificator, which Alison uses to wipe the child's head dry after baptism. A few minutes before the service starts we invite the family into church and give out the service booklets.

At the end of the baptism service we bring up a boxed candle to light from the tall Easter candle, and present it to the family. Some families like to relight the candle on the anniversary of baptism. The candidates for baptism are each given a unique gift, a beautifully printed card of an acrostic prayer, made using the letters of their name. Recently in addition, we give out a hand knitted prayer bear.

Some baptisms happen within the 10 o'clock service, most take place at 12 o'clock. We are all delighted to welcome these new members to our church family. It is really lovely to see over the years the children grow, coming along to JJs or church then

Junior church, perhaps Adel St John's school, and ACE!

Do let us know if it is something with which you would like to be involved.

## Jill Holloway

### Live-Streaming Team

I am a member of this team, whose role it is to broadcast the 10am Sunday Service over the internet on to YouTube, enabling those who cannot attend in person to take part "virtually". The Service is also recorded, so can be watched any time afterwards on YouTube, with a link being placed on to the Church's Facebook page soon after each service, and it is gratifying to be able to provide this facility for others, and to keep a record of the services.

The team consists of Trevor Cole, Amanda Knight, Chris Cunliffe, Jonathan Musto, Julia Tang, Thang Tang, & myself, and we set up a new rota every three months to ensure (as far as possible) that every Sunday 10am Service is broadcast & recorded - we are also sometimes able to 'live stream' other Services, such as funerals, if requested. Trevor is the driving force behind this initiative, but we try to ensure the workload is shared equitably, and since it has been going for quite a while, we have all gained sufficient experience that our initial trepidation about "getting it wrong" has (mostly) gone.

## Hugh Lavery

# Penny's Ponders

Hi Everyone!

I hope you've all had a good summer. I reckon it's 'good' when I have chance to cool off, so I did enjoy it! I say I enjoyed it, but I've been very poorly again – think it must be an age thing! Never mind, my lovely vet in Thirsk has made me feel a lot better with her magic sprays and tablets, so I'm not grumbling. I have a very funny diet now, no more red meat and nothing manufactured – including treats 😊. Apparently, there's something wrong with my liver (whatever that is!) so I need to be careful. I have learned to love carrots, butternut squash, sweet potato, swede and rice. Rice of all things!! I wouldn't even have looked at it before, never mind sniffed it, but there you go. I do like eggs, cottage cheese, tuna, white fish and my favourite favourite, chicken breasts, so life really isn't bad at all – and I get to have 4-5 meals a day! I have got some strength back in my legs now, so I'll see you around.

One thing my Mum and I have enjoyed this summer is the bees. They are so tenacious and work so hard. My Mum is particularly fond of long-stemmed meadow buttercups and we have had many really funny times watching the bees on them. The bees must really like them – maybe it is because they are so shiny and bright – because they can't leave them alone!

There is one problem, though. Those long stems are very springy and the bees are rather heavy, for their size, and it's hilarious to watch them hanging on for dear life while they try to collect the nectar. We watched one very determined character fall off several times, but it never gave up and in the end it enjoyed its prize.

Determination. A long, but very pertinent word when it comes to thinking about our lives, how we live them and our relationship with God. It is a gift, given to us by Him, to help us to balance our lives, to help us to be strong when we feel weak, to pick ourselves up whenever we get really down and feel estranged from Him.

Sometimes, keeping a strong relationship with God requires determination – and not only from us. When we are having a difficult time, we should also remember the blessing of God's determination towards us. He has called us through Jesus, He wants us, cares for us, we matter to Him and He is determined to always keep the door open for us to re-engage with Him if/when our relationship falters.

Determination is a key factor in our lives. We need it like food and sleep so let's be determined together. With woof and licks,  
**Penny**

# Environmental News

## Déjà vu

Another edition of Adel Bells and another record was broken, and not in a good way. 2023 is now one of the warmest years on record. On Monday the 3<sup>rd</sup> of July, we, the world, saw that the average temperature topped 17°C for the first time. Eight of the top ten warmest years have been in the last decade, and this year could be at the top of that list.

So, this sense of familiarity is not a dream. Once again, what the weather is doing over the summer has been all over the news. Large-scale wildfires rage across much of our planet. The morning of August 8<sup>th</sup>, on the island of Maui, Hawaii, a fire started that spread rapidly and wiped out a whole town. It's still unclear what the final toll of lives lost is, but hundreds are still unaccounted for. Closer to home, Europe had several extreme heatwaves, drying out the countryside and leading to devastating wildfires in Italy, Greece, Portugal, Spain and France.

After the fire came the flood. Between the 4<sup>th</sup> and 7<sup>th</sup> of September, Storm Daniel hit southern Europe, causing widespread flooding, and hitting Greece just after they started to come

to terms with the wildfires. While over in Hong Kong, torrential rain lashed the country, causing the worst flooding they have seen in over 140 years. Why is this happening? Currently, we are in an El Niño event. A rise in sea temperature over the Pacific Ocean and La Niña, the opposite that cools the sea. These events occur roughly every 2 – 7 years and impact the world's climate. The Gulf Stream over the Atlantic Ocean keeps much of the UK warm. Our planet for thousands of years has managed to keep this in balance but with human activity, we have seen a rise of around 1°C since keeping records in 1880s.

## We are doing a bad job of it

1°C doesn't sound a lot but it's enough to melt the polar ice and as we continually upset the delicate balance of nature, we are seeing our climate change drastically, faster than what the natural order of things would do. God created our planet and sent down His only Son to help us and entrusted us with caring for His creation, and we are doing a bad job of it.

## Thang Tang

The optimist proclaims we live in the best of all possible worlds; and the pessimist fears this is true.

Come & join in our



## Faith Lunch

Sunday, 15th October, 12 for 12.30

In the Old Stables



This event is part of our Harvest Festival. Please bring food to share.

Sign up for savoury, salad or dessert in church, or email your preference to [adelparishchurch@gmail.com](mailto:adelparishchurch@gmail.com)

Wine and soft drinks will also be available for a donation





**9-15th October 2023**  
**Baby Loss Awareness Week**  
**Adel Parish church is supporting this**

Sadly, the death of a baby is not rare. In the UK, 1 in 4 pregnancies ends in loss and every day around 13 babies die before, during or soon after birth.

This year marks the 21st year of Baby Loss Awareness Week in the UK – a week for everyone in the baby loss community and beyond to come together to remember and commemorate our much-loved and missed babies, to highlight the importance that bereavement support plays and the need for improved pregnancy outcomes.

Throughout the week, it is important to create a safe space for families to share and feel supported, whatever their experience of loss may be, to learn about how they've coped, what helped (and what didn't) so we can all learn how to better look after each other as a community and know how to get the right kind of support when we might need it.

Adel Church will be participating in Baby Loss Awareness Week between 7th to 14th October with a dedicated display area and key information available to view outside the church and in the churchyard. There will also be a special area to honour babies that have sadly been lost and we will be welcoming people in to the church to light a candle in memory of their babies as part of the nation wide **'Wave of Light'**, no matter how long ago their loss might have been. Your babies mattered then, they matter now and they always will.



We look forward to welcoming you during this time. Check with the church Facebook page or website nearer the time for more details.



Children bring your Grown ups and join us for a

## **Family Harvest Craft and Games Event**

**Saturday 14th October**

**2pm til 4pm**  
**in the Old Stables and Church**

**Activities 2pm til 3pm to include:**

- Making a salt dough Wheatsheaf and a Prayer Tree of Thanksgiving to be displayed in church.
- Create a lolly stick tractor and a Corn on the Cob
- A Scavenger Hunt in the churchyard and lots more including a Target and Caterpillar game.

Then a short church service to be followed with light refreshments in the Stables.



Please bring a food donation eg a tin or something non perishable to take to church to present at the Altar .



# Nature Notes

## A Warming World

About 30 years ago we had a holiday on the Greek island of Rhodes. It was not a very exciting place and I remember very little about it, but one wildlife feature I do remember was a visit to the Valley of the Butterflies. It was quite famous on Rhodes and well signposted and we eventually arrived at a steep, well-wooded valley where the tree trunks and branches all carried large numbers of what looked like butterflies but which were, I am sure, moths. Butterflies do not spend warm sunny days resting on tree trunks, but moths, which fly mainly by night might well do this. The internet calls them “nocturnal butterflies”.

During the summer just ended, woodland fires on Rhodes raged for days on end and it is very likely that all the trees and the moths (or butterflies) will have perished. Even if some managed to fly away, where would they go? And of course this year wildfires have raged over other parts of Europe, North America and Hawaii and elsewhere, with devastating effects on human populations and settlements but, almost certainly, with even more

dramatic effects on populations of plants and animals that have existed together for thousands of years. I hope this is not a foretaste of how the world will soon be, but it appears to be a real possibility.

**Moth Trapping** As far as I remember I began moth trapping in 1992, and I carried on every Spring and Summer until in 2020, influenced by the Covid outbreak, I decided to have a break. I always intended to start again, but somehow I never got round to it. So I have now decided not to do any more. The number of species identified in our garden is well over 300, but in recent years there has been a big decline in insects generally so it might be difficult to reach that number in future.

**House Sparrows** It was good to have sparrows back in the garden, lured by the provision of fat balls. There was a hiatus when Wilkinsons tottered, but we have now found an alternative supply and all is well – well the sparrows think so.

**Peter Larner**

Anxiety is an attempt to carry the burden of the future oneself; prayer is leaving it safely in the hands of God.

# National Trust

## News from the Leeds & District Association of the National Trust

Back in March, our new President, Emeritus Professor, Joyce Hill, was introduced to the membership. Joyce needed no introduction as for at least a decade she has given a well-attended lecture each year, on a variety of subjects, to our members and guests. Her talk on medieval Leeds opened the autumn 2022 series and was extremely well received, setting new attendance records.

Also at that meeting a donation of £3,000 was authorised to the National Trust to be equally split between East Riddlesden Hall, Nostell and Wentworth Castle Gardens. All the recipients have written expressing their thanks and letting us know how the money will be spent.

In East Riddlesden Hall it will be used towards creating a new stand for the Saxon cross fragments for display in the Great Hall (on the right as one enters). The two fragments date from the 8<sup>th</sup> or 9<sup>th</sup> centuries and so are over 1,000 years old. They were found 30 years apart – the lower section in the grounds in 1959 and the upper section in the cellar of the hall, repurposed as a window-seat. The current base has become unsteady and the fragments need to

be secured. It is hoped to create a stand that will preserve the cross and tell its incredible story for future generations to enjoy.

At Wentworth Castle gardens the money is being put towards buying lighter electrical equipment and a battery pack to enable charging to take place in the gardens. Their many garden volunteers will benefit as well as the visitors to the property.

At Nostell the money is being used towards creating a new exhibition space in the servants' hall and work has already started on this. The first exhibition planned will focus on Sabine Winn, the Swiss born wife of Roland, the flamboyant and extravagant 5<sup>th</sup> Baronet, son of the builder of Nostell's house. It will contain items by Thomas Chippendale (born in Otley) amongst other exhibits.

**Ann Lightman**  
c.lightman@sky.com  
0113 216 0630

*In the winter months there is a monthly talk in the church hall of St Chad's. You can find details of the October talk on p.29. You do not need to be a member to attend the meeting.*

# Words from Joyce Hill

## Choral Evensong

Choral Evensong is one of the glories of the English musical tradition, which many people enjoy. These days it is mainly the cathedrals which are the guardians of this tradition. Until the early 1960s, Sung Evensong on Sundays, and the morning counterpart Mattins, figured more prominently than the Eucharist. Now, the Eucharist is commonly the main Sunday service and Evensong has all but disappeared — though not in cathedrals.

The prominence given to the Eucharist and the near-loss of Evensong within a parish setting began in the 1960s when modernised wording for services was introduced. This marked trend persisted, and now it is fairly rare for the wording of the Book of Common Prayer to be used. However, in cathedrals, whether Evensong is said or sung, the language of Thomas Cranmer, is still used. The musical settings we enjoy work well with his language, giving the service a rich and peaceful solemnity.

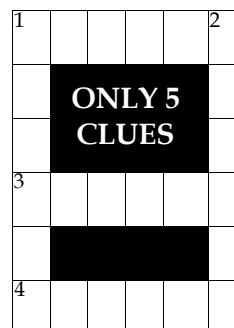
The term 'evensong' comes from Anglo-Saxon times and was used for the service of Vespers, one of the Hours or services within the monastic daily round of worship. 'Vespers' comes from the Latin for 'evening': Evensong comes from the Anglo-Saxon word *æfensang*, and was the

name used by Cranmer for the service he created by amalgamating and building upon the pre-Reformation services of Vespers and Compline and his Evensong is highly traditional in its form.

We can see from this that the history of Evensong doesn't simply tell us about changing practices in the twentieth century; tracking it through the various versions of the BCP also tells us about changes at the time of the Reformation and its aftermath. In the BCP of 1549, largely prepared under Henry VIII although issued in the reign of Edward VI, Evensong was not thought of as a congregational service, but rather as one of the services of devotion for the clergy, reflecting something of its ultimately monastic origins. The BCP of 1552, a product of Edward VI's more rigorous Protestantism, changed that: the congregation was expected to attend on Sundays and to take part; there was to be no music — hence the renaming of the service as Evening Prayer.

It was the Restoration of the Monarchy, the resulting 1662 BCP, and consequent further change to liturgical practice that put Evensong in the prominent position it held in parish life until the mid-twentieth century.

# Puzzles



## ACROSS

1. An uncannily grim, upsetting story that's initially impressive
3. Trains here, not Susan, running round
4. Moral code that could be his, etc

## DOWN

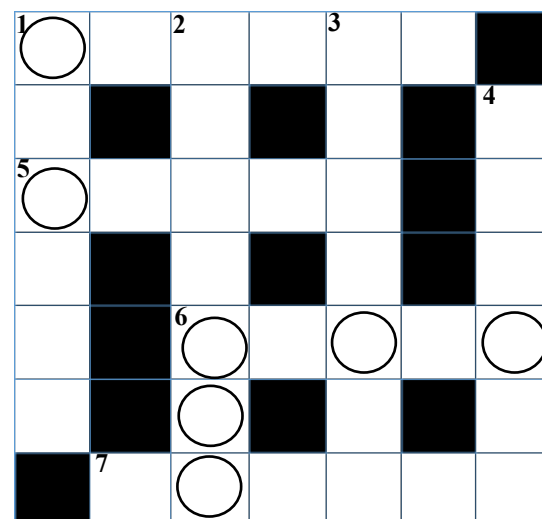
1. Each expert consumes pastry dish
2. Commit fault by net after returning - in this sport?

## Jumble Crossword

### How to play

Look at the clues. In brackets after each clue is an anagram of the answer. When you have completed the puzzle, study the circled letters and solve the anagram to find the answer to the final clue.

**CLUE:** This can be heavy or light, but it's not something that can be picked up.



## ACROSS

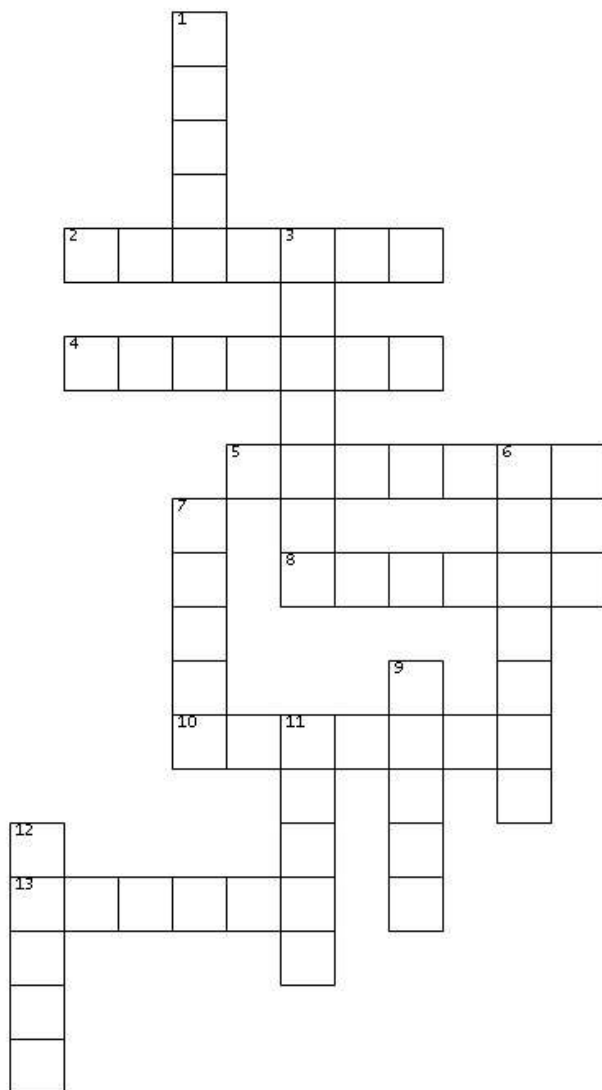
1. \_\_\_\_\_ deck (GLFIHT)
5. Objectionable (UFALW)
6. Deduce (FIREN)
7. Needle (SSUTLY)

## DOWN

1. Dreaded (DRFEAE)
2. Impose (CFINTIL)
3. Beneficial (PUFHLLE)
4. Beautifies (NSAODR)

Solutions on p. 35

# Criss-Cross Puzzle



## ACROSS

- 2. Ghastly
- 4. Lover of one's country
- 5. Large mug-like vessel
- 8. Crazy
- 10. Tell a story
- 13. Hinder

## DOWN

- 1. Inundation
- 3. Paper-folding art
- 6. Curling lock of hair
- 7. Norwegian dramatist
- 9. Inland waterway
- 11. Wild West show
- 12. Simple song

Solutions on p. 35



## Best of Brahms

**Saturday 21 October  
7.30pm  
at  
St Edmund's Church,  
Roundhay**

## Ein Deutsches Requiem & Liebeslieder Waltzes

### Tickets at:

<https://www.leedsfestivalchorus.co.uk/performances/brahms-2023/>

**Simon ~Wright  
(Conductor)  
Tamish Raitt  
(Soprano)  
Conrad Chatterton  
(Baritone)**

**Anthony Kraus  
(Piano)  
Rebecca Taylor  
(Piano)  
Leeds Festival Chorus**



**SATURDAY 7th OCTOBER**

**10am to 12.30pm**

In Adel Methodist Church Hall  
Let's do whatever we can to  
support people living with cancer.  
Contact Beryl : 07951 239 831

## Concert in Church Saturday 28th October

**7.30pm**

Treat yourself to a delightful evening  
of great foot-tapping songs from the  
Jazz and Swing period, performed by  
the

### JazzLyrical

group of singers and musicians.  
See the church website or Facebook  
for more information

# In Your Garden

**"October's the month  
When the smallest breeze  
Gives us a shower  
Of autumn leaves.."**

Whether the mists and mellow fruitfulness associated with October arrive early or late there is no escaping the shorter days, so there is less time available to appreciate those remaining autumnal jewels and to get on with those seasonal jobs. There will be plenty of dead or dying plant material requiring your attention, and of course there will be spiders' webs everywhere!

## Root-wrapped shrubs and bushes

October is an ideal time for moving and planting trees, shrubs and climbers, as well as for hedge planting. Bare-rooted deciduous trees and shrubs, as well as root-wrapped evergreens, become available towards the end of the month, so you could think ahead and prepare the ground for them now. They are much cheaper than the containerised plants for sale in garden centres and are the perfect choice whenever large numbers are needed - perhaps for a new boundary hedge, woodland or a rose bed. Their roots will need to be kept moist for at least a year after

planting, until they become established, so you will need to consider how to achieve that given the ever more unreliable arrival of rainfall.

It is probably your last chance to trim hedges to keep them looking tidy over the winter. It's also a good time to prune climbing roses and for deadheading those faded blooms around the garden.

Hanging baskets will be coming to an end and should be emptied and cleaned ready for next year. Some plants like geraniums and begonias for example, can be potted up and overwintered. Make sure you bring these and all tender plants into a frost-free greenhouse or conservatory for the winter. If you've kept them going through the extremes of weather during the last couple of years it would be a travesty to now lose them to an early frost!

**George Turnbull**  
enquiries@adelgardencare.co.uk  
www.adelgardencare.co.uk



# History & Activity Groups

**The 1152 Club usually meets  
every other Tuesday at  
10am - 11.15  
during term-time.**

The Club now meets in the  
**Gate House**  
at **Abbey House Museum.**  
(Kirkstall Abbey Visitor  
Centre will become the  
**New Café**)

Free parking near the Abbey House.  
This a free, friendly local history  
group for adults aged 55+  
**Patrick Bourne**  
Kirkstall Abbey, Leeds LS5 3EH  
Kirkstall.abbey@leeds.gov.uk  
For further details, **0113 378 4079**

or contact Val Crompton

**On 23rd August**, 1152 Club  
members met Claire Doble, outside  
Abbey House at 2pm. We walked up  
to the walled Herb Garden to meet  
two members of Opera North.

We enjoyed sitting out in the  
sunshine, listening to the singing and  
finding out about Opera North.

**24th October at 10am**

'Royal Links to  
Lawnswood Cemetery'  
with Ann Lightman

## Adel Artists' Show

This event, which appears to have become an annual attraction for our community, took place last month and I can't recommend it highly enough. There was an amazing range of objects on show: paintings, obviously, but also willow weaving, pottery, greetings cards, embroidery and stained glass, all set out in a beautiful Adel garden. If you didn't get to see it, please watch out for it next year. We bought a number of lovely items to be given as Christmas presents.

Here are some comments from a couple of visitors:

*I enjoyed a visit to Adel Artists Open Garden Show to see the talented work of local artists across a wide range of media and meet the artists.*

**Val Crompton**

*Sue and I visited the art exhibition in Adel yesterday and I got a lovely print of St John's Church with daffodils.*

**Joyce Linsley**



Work by  
medieval  
embroidery  
specialist Tanya  
Bentham on  
display at the  
show

**Marjorie Cole**



# OPAL Activities

October is a good time to recap what we offer at the Welcome In Community Centre.

We are open Monday to Friday (excluding Bank Holidays) and we have a Drop In office open 9am -1pm for members to call in and deal with any enquires they may have. Our warm and welcoming Community café is open Wednesday to Friday 9am-3pm; do come in for a relaxing drink and a delicious home-made treat.

**Monday** kicks off the week with a lunch club for our members, where they can enjoy a home cooked two-course meal for only £6. Monday afternoon also sees Dance On, 2:15pm-3:15pm (run by Yorkshire Dance); this is suitable for all abilities (seated or standing).

**Tuesday** is the first of our Health Hubs 10am-12 noon which works in collaboration with the local GP practices; please speak to your GP or nurse to get more details about this service. Tuesday afternoon is our Carers' group and Memory Support group; these are on alternate weeks and run 1.30pm-3.30pm.

**Wednesday**, we have two different exercise classes running; Gentle Exercise class 10:15am-11:15am followed by a Chair Based Exercise class. We have an informal Craft group that meets fortnightly 10am-12

noon. Our second lunch club is on Wednesdays and is held at The High Farm (behind the ASDA) 12:15pm - 2pm. On the first Wednesday of the month the High Farm kindly put on an entertainer for us. We have had some amazing singers.

**Thursday** kicks off with our Board Games morning 10:30am-12 noon. Thursday also has Dru Yoga 11am-12:15pm and another Chair Based Exercise class 2pm-3:15pm. We also run fortnightly shopping trips on Thursdays to Pudsey Owlcoates. Members get picked up from home so no need to worry about heavy shopping bags. Thursday is also the day for Table Tennis 2:30pm-4pm; this is a group for all abilities.

**Friday** is the last of our lunch clubs for the week, and 2pm-3.30pm sees our Friday Fun Social, this has a different activity each week, from quizzes to performing dogs: we have seen it all here at OPAL.

These are our regular activities but we also do trips and other events. If you would like more information please contact us on 0113 2619103, email [admin@opal-project.org.uk](mailto:admin@opal-project.org.uk) or call in to see us at the Welcome In Community Centre 55 Bedford Drive, LS16 6DJ

**Shelley Clark**  
Project Worker

# A Summer Experience

## Wow wow Wimbledon

**A**fter a few years of being in the ballot for Wimbledon, my wife Helen finally got some tickets. We had stayed overnight in Walthamstow and travelled by the Elizabeth line to get to the venue. As we had tickets for Centre Court we could have gone into any of the other courts, but instead we made our way up to the famous Henman Hill.

On a very large screen up on the hill, we watched the match between Jan Choinski (GBR) and Hubert Hurkacz (Poland). The space around us soon filled up with other people watching the big screen. Yes, the Champagne corks started to pop, but Helen suggested that we share a glass of Pimm's. This also seemed to be the choice of our fellow tennis fans. Eventually Helen returned with the drink, having paid £12-50, even by London standards a bit expensive.

The centre court started at 1.30. You have to be fit and mobile as there are quite a few steps to negotiate into the Centre court and up to the seats. Our seats were almost opposite the Royal box and since I had taken my binoculars I could do celebrity spotting. I saw Colonel Tim Peake (astronaut), Lord Sebastian Coe, comedian Sally Phillips, Ann Jones, former England tennis champion, to name a few. The first live tennis was a

men's tournament: Liam Broady (GBR seeded 93) versus Casper Rudd (NOR seeded 4). This was a 5 setter which Broady won.

We then walked right to the top of Henman Hill, from where we could see a sea of people; it was now very busy. We went into the main tennis shop, where you could buy all sorts of tennis related items from a tea towel to a replica of the tennis trophy.

It was then time to head back to Centre Court as the next match would be starting shortly. It was a ladies singles: Alize Cornet (FRA, seeded 94) versus Elena Rybakina (KAZ, seeded 3). This was a thrilling 3 setter. Then it was time for strawberries and cream. Andy Murray was due to play but not until 8 o'clock, so we decided to set off back to Walthamstow. We were glad we did because it took us over an hour to get back. We managed to clock up over 12 thousand steps.

What you don't get watching the tennis on the television is the atmosphere, the speed of play, the pop of the ball when it hits the racket and the sound as it whistles through the air. So although it was quite a tiring day, I would love to go and watch the tennis live again.

**David Blakeley**, member of the Holt Park Writers' Group

# York Gate Update

## Summer's Last Hurrah!

Although we are approaching the closure of the garden at the end of this month, there is plenty still to enjoy at this time of year as summer mellows into autumn. The gardeners will be watching the night time temperatures for any signs of frosts which will necessitate some tender plants being removed to the protection of the nursery.

Our visitor numbers have increased substantially this year to well over 17,000 with people coming from near and far, including one garden group from America and another from The School of Dentistry! Two visitors of note were Adam Frost and Frances Tophill, presenters from the BBC's Gardeners' World programme. York Gate has featured twice this year in June and August with Head Gardener, Jack Ogg, as their guide. It was wonderful to see the garden in all its glory and for the garden team to receive the recognition they so justly deserve. Of course, this was not the first time York Gate has appeared on our TVs. Many years ago, the late, great Geoffrey Smith came to the garden and was shown around by Robin Spencer.

Following the airing of the first programme with Adam Frost, a retired professional photographer, Brian Chapple, who had visited Sybil

Spencer at York Gate, got in touch and he has kindly sent us his photos of the garden. Some are of particular interest, having been taken from different perspectives and showing parts of the garden no longer there. These are now available to see on the Digital Archive ([heritageyorkgate.org.uk](http://heritageyorkgate.org.uk)).

Last year everyone at York Gate was delighted when the garden was recognised with a Trip Advisor Choice Award and so it is a great pleasure to announce that the Award has been received again for a second and consecutive year. People visit for many reasons and there were many lovely comments praising the garden, the plant nursery, the café, and the shop as well as all our staff and volunteers.

*It is all part of the experience and magic that is York Gate.*

**Gillian Smith**  
Heritage Volunteer

## Opening Times

**1 April – 29 October 2023**

Garden, café and shop open  
Wednesday – Sunday | 10am – 4pm  
Our plant nursery opens at 11am on all public open days.  
The garden itself at York Gate will close on Sunday 29th October but the café and Christmas gift shop will remain open.

Enjoy a classic

# Afternoon Tea for 2

for only **£25.90**

In the Granary Restaurant



**Booking essential.**  
Reserve your table the day prior to your visit ONLINE at [www.craghousefarm.com](http://www.craghousefarm.com)

Quote  
**ADEL BELLS**  
on your booking form

YOU MUST hand in your completed voucher on arrival to redeem the offer on the day. Pre-booking ESSENTIAL.  
Offer valid on bookings at 2.15, 2.30 & 2.45pm **Monday to Thursday** during October 2023 ONLY.  
Not available in conjunction with any other offer.

Title:	First Name:	Surname:
email address:		

☐ By ticking the box and submitting your details, you are giving CFL & Crag House Farm your permission for us to contact you with offers & information. We do not share your details with any 3rd parties. We adhere to a strict privacy policy and you can unsubscribe at anytime. View our privacy policy at [www.craghousefarm.com/privacy-policy](http://www.craghousefarm.com/privacy-policy).

**Crag House**  
FARM

Crag House Farm - the home of Caring For Life • (0113) 230 3618   
Otley Old Road, Cookridge, Leeds LS16 7NH • [www.craghousefarm.com](http://www.craghousefarm.com)

# What's On

## Headingley Flower Club at Bramhope

**Friday 6th Oct**

"Seasonal Sensations" Jo Purdy  
7pm Bramhope Village Hall,  
Old Lane, Bramhope. LS16 9AZ  
Contact Mrs Jean Money  
Tel 01924 468714



## Churchyard Workparty

**Saturday 7th October**

9am to 11.30am



## Adel Gardeners' Club Monday 9th October

'Bulbs found in a royal garden'  
George Lockwood  
The talk includes a section on  
Highgrove, but it covers watering,  
insects and the soil.  
Zoom into homes at 7.30pm  
<https://adelhort.chessck.co.uk/>



## Leeds & District Association of the National Trust

**Tuesday 10th October**

"The World of Bede" with our  
President, Professor Joyce Hill  
St Chad's Parish Centre,  
Far Headingley  
Talks begin at **10.30** am with coffee  
etc. served from **10.00** am.  
Association members £4.00,  
guests £5,  
Refreshments by donation



## Adel Players Going Straight" by Richard Harris Wednesday to Saturday 18th to 21st October

at 7.30pm in Adel Memorial  
Hall

**"Old villains may retire ... but  
are they really going straight?"**

Two former villains, Michael, now  
living a comfy life in Spain, Ray, trying  
to make ends meet in Britain, come  
together in Spain but for what reason?  
Please note that in context with  
the characters, there is strong language  
used in this play  
Tickets at £10 may be booked  
by email at [boxoffice@adel-  
players.org.uk](mailto:boxoffice@adel-players.org.uk).

# Flower Show 2023

## You do need that competitive spirit

The Adel Flower and Produce  
Show, put on annually by Adel  
Gardeners' Club, is not only a way for  
the talented folk of Adel to show off  
their gardening skills and creative  
works, but it is also a means by which  
they might give vent to their  
competitiveness.

Flower arranging, fruit & veg growing,  
baking, painting, photography, knitting  
and sewing are skills that deserve to be  
showcased in this way and this year's  
show did justice to the hard work put  
in by young and old alike. It was a  
delight to wander round and admire  
the entries; none of this would have  
been possible without the hard work  
of the volunteers who had set up the  
displays, organized the plant sales and  
welcomed the visitors.

As I wandered from one class to  
another, and there were 90 classes in  
total, I found I began to wonder how  
the judges came to decide on the  
winning entry. It made me realise that  
we all have different ways of looking at  
things and even a professional flower  
arranger/ artist/ crafter/gardener etc  
can be swayed by their own emotional  
response. In my eyes, everyone who  
entered was to be admired and luck  
may have played a part in allocating  
first prizes to exhibits.



Class 27 "A Side Table Arrangement"

Names of our church members were  
frequently to be spotted, many of them  
having winning entries. Well done, all  
concerned! I hope I might be inspired  
to have a go myself next year and  
would encourage you to do the same.  
Have a look at the Adel Gardeners'  
Club website - [adelhort.chessck.co.uk](https://adelhort.chessck.co.uk) -  
and start thinking now about what you  
could offer. You do not need to be a  
member of the club, but you do need  
that competitive spirit!

**Marjorie Cole**

## QE Corner

Here it is again..... QE (Quite Enlightening) Corner.

Until the 1840s there was no maximum size for a rugby team; matches were played with up to 300 players on the pitch at once.

When the Bakerloo line was last cleaned, staff pulled out 6.5 tonnes of grime and fluff.

The French word for dustbin, poubelle, is the name of the man who in 1883 decreed that the owners of Paris buildings provide them for their residents.

About 20% of US children eat pizza on any given day.

Most of the oldest trees in the world are hollow, making it impossible to count the rings to date them.

A 2017 estimate put the cost of the US President's travel at \$2,614 per minute.

In Hamilton Ontario in 2022, it rained soya beans.

There are more boats on Britain's canals today than there were during the height of the British industrial revolution.

Elephants' only sweat glands are between their toes.

In 1941, Ford produced a useable car, the body of which was entirely made of plants.

Before cane sugar was introduced to Europe, food was often sweetened with parsnips.

A single town in China produces one third of the world's supplies of socks.

A 2017 issue of the comic book 'Asterix' featured a masked antagonist called Coronavirus.

Almost everyone with British ancestry is descended from King Edward III.

The New Zealand Parliament's rules of conduct in the Chamber explicitly permit knitting.

In the 1920s, women's football matches would often attract larger crowds than the men's games.

England cricketer Alec Stewart was born on 8/4/63 and scored 8,463 Test runs in his career.

The dome on the British Museum is larger than St Paul's.

*Please note these "Facts(?)" are all from the internet, so don't blame me if they are not correct!*

**Trevor Cole**

## Barry Anderson

### Planning Application – Two Dwellings – Land on Long Causeway

There were numerous objections, including from Caroline and me, the Neighbourhood Forum and around 40 other residents. This green belt land is in the Conservation Area and the damage to the trees in terms of their contribution towards carbon capture and their visual amenity is unacceptable. The land has never been in the Strategic Housing Land Assessment Area (SHLAA) and contravenes the Council's own Local Plan Consultation document from 2021, as well as the Adel Neighbourhood Design Statement and the emerging Adel Neighbourhood Plan. A previous application was rejected.

### Traffic and Pedestrian Signalling – Holt Land/Otley Road Junction

Many queries have been received about the timing of the pedestrian signalled crossing at the Holt Lane/Otley Road junction and the dangers that these are causing. I took this up with the Council's Traffic Signals team and have received the response below (as I write, we are still in August):  
*The traffic signals at the junction of A660 / Holt Lane are to have "All red" detection added, which will detect if there are vehicles waiting to turn right into Holt Lane. If at the end of green for A660*

*traffic, there are vehicles waiting to turn right into Holt Lane, the time to showing a green man for pedestrians will be increased to ensure vehicles have cleared the pedestrian crossing area before showing a green man. This requires a new specification writing for the signals and a new configuration loading into the controller by the traffic signal company. Times for this type of work is around 8 – 10 weeks. In the interim I have increased the clearance period between A660 losing green and the pedestrians being shown a green man across Holt Lane.*

If you notice issues at any time, copy me in and email Traffic Signals direct at [Traffic.Signals@leeds.gov.uk](mailto:Traffic.Signals@leeds.gov.uk)

### Tuana Restaurant:

Tuana applied for retrospective planning permission for the decking around the restaurant. This was refused. They appealed to the Planning Inspector and the appeal has now been dismissed. The next steps will be for Planning Enforcement to take action to enforce the removal of the decking area.

### Questions to the West Yorkshire Mayor:

The Mayor was present at a meeting of Full Council to answer questions from Councillors. Any questions not answered on the day received a written response. One of these questions was "Will the Mayor take this opportunity to rule out the



introduction of a ULEZ in West Yorkshire?" The answer was:

*"There are currently no plans to introduce a ULEZ in West Yorkshire. Air Quality is currently the statutory responsibility of our West Yorkshire district partners and we will continue to support the work they do to improve air quality for everyone who lives and works in West Yorkshire. This includes working with Leeds City Council alongside the other four West Yorkshire district partner councils to develop a West Yorkshire air quality strategy as part of our ongoing climate and environment work to reduce emissions to support health and*

## Billy Flynn

Hi everyone

I hope everyone enjoyed the last burst of sunny weather in September. Autumn is now upon us with Winter looming.

### Adel Community Garden ( on Long Causeway)

The new community garden with its planters in full bloom and bench in regular use is a real boon to the local community. However, the land is designated as adopted highway and is the responsibility of the Highways Department at Leeds City Council. The garden was constructed without the permission of Highways and the council were initially planning to remove it but it looks likely that a licence will be granted by Highways

*environmental improvements."*

### Temporary traffic order – Blackhill Road

Blackhill Road has been closed since 4<sup>th</sup> September and will not reopen until 8<sup>th</sup> October. This is for carriageway drainage and resurfacing works. Additional drainage will be installed and the carriageway will be reprofiled and resurfaced.

barry.anderson@leeds.gov.uk  
Direct Dial 0113 3367742

allowing local residents to maintain the garden although this has yet to be finally agreed. If a licence is granted, the land will remain in the ownership of Leeds Council. Any agreements will be regularly reviewed but they will not stop a utility company from installing their apparatus on top of, or under the ground at the location. Utility companies have the statutory right to install their apparatus within the adopted highway. There are already a considerable number of services that run underneath this area so the possibility of the garden being disturbed, excavated, or built upon in the future must be accepted. But the important thing is that unless the licence is refused the garden will remain in place for everyone to enjoy.

Please support our advertisers and mention Adel Bells

### Adel Beck development

As you may have seen, the footings for the first two houses at the top of East Moor Lane have been laid and will be used as the marketing suite for the development. The first piece of landscaping work on the verge where the recycling point is located has been completed. This involved the lifting of the tree canopy, tidying up the area and grass seed being planted on the verge itself. Similar work is planned for the other side of East Moor Lane to the rear of the first two houses. The recycling containers are now on proper hard standing, and the first section of the new footpath has been constructed by the developer. However, you are probably wondering why the new footpath has not been completed. Unfortunately, bureaucracy has reared its ugly head. Developers are required to make a financial contribution for the improvement of local facilities and Advent, the developer here, offered to extend the footpath all the way to the Mulberrys, as part of the planned local highways improvements. This offer was refused so we now have to wait for the council to commission the remainder of the work instead of the footpath being ready for the children's return to school after the Summer break. I am trying to expedite this because there seems to be no logic in the decision.

### Little local free library

I have funded a new little library for

the Hawthorn Gardens/Chestnut Drive estate off Holt Lane. We are now building quite a network of these valuable local assets which are so useful to people who can't get to a library and to those of us that prefer a real book to a Kindle. If anyone is interested in having one locally, please let me know. All the work is done by a third party at a very reasonable price.

Telephone 0113 4694785,  
07810640282 or email  
billy.flynn@leeds.gov.uk

### Adel Survey: Reminder

**A**del Neighbourhood Forum is keen to find out what Adel residents think are the priorities for our area, and how local people would like to get involved in making Adel a better place to live and work.

Everyone in Adel should recently have received a survey form. **Please send your completed forms back by Friday 6th October**

via [www.surveymonkey.co.uk/r/AdelForumSurvey](http://www.surveymonkey.co.uk/r/AdelForumSurvey)

or by dropping off a hard copy at Adel War Memorial Hall letterbox on the Church Lane side of the Hall.

If you would like another paper copy, please contact the Forum on [anf.chair@gmail.com](mailto:anf.chair@gmail.com)

### Only 5 Clues Across

1. AUGUST
3. EUSTON
4. ETHICS

### Down

1. APIECE
2. TENNIS

### Jumble Crossword Across

1. FLIGHT
5. AWFUL
6. INFER
7. STYLUS

### Down

1. FEARED
2. INFLICT
3. HELPFUL
4. ADORNS

### Final Answer TRAFFIC

### Criss-Cross Puzzle

#### ACROSS

2. HIDEOUS
4. PATRIOT
5. TANKARD
8. INSANE
10. NARRATE
13. IMPEDE

#### DOWN

1. FLOOD
3. ORIGAMI
6. RINGLET
7. IBSEN
9. CANAL
11. RODEO
12. DITTY



### Fun characters having great adventures written to promote:

- ✓ Being good friends
- ✓ Embracing differences
- ✓ Taking care
- ✓ Having lovely manners
- ✓ Learning who may keep them safe

### Join the Cones and enjoy the fun!

Available from all good bookshops and on line, "Meet the Cones" and "Cones Make New Friends" introduces the Cones, how they come alive and how they become friends. The Cones series of books is written to be fun to read while helping children learn to live with each other in the best

possible way but always with safety as their first priority.



www.fisherkingpublishing.co.uk

Helping children learn to live and play within parameters based on moral and ethical values.

e: [chris@theconesbooks.com](mailto:chris@theconesbooks.com)  
m: 07841 436765

[www.theconesbooks.co.uk](http://www.theconesbooks.co.uk)

Companies and organisations supporting child safety, friendship and moral and ethical principles through The Cones series of books include:

**Ai Workwear**  
**Amey**  
**Approved Food**  
**Balfour Beatty**  
**BAM Nuttall**  
**Bion Energy**  
**Biz Vision**  
**Bradford College**  
**BV-TV**  
**Caddick Construction**  
**CityFibre**  
**Colas Ltd**  
**CSR Accreditation**  
**Curveblock**  
**Drax Power Group**  
**EKFB**  
**Enjoy Digital**  
**Environment Agency**  
**ENGIE**  
**Eurovia**  
**FusionBlu**  
**Grand Central Rail**  
**Genovate Power Solutions**  
**GXO Logistics**  
**Harworth Group**

cont'd



**Adel Wills Ltd**  
For Wills and Lasting Powers of Attorney

### Lasting Powers of Attorney and Wills

- Friendly and Professional Advice
- Home Visits
- Local Independent Business
- Fixed Fees

**Please call Jane Wintringham** BA (Hons) Law, MIPW  
on  
07931 369813 or 0113 305 3604  
email: [jane@adelwills.co.uk](mailto:jane@adelwills.co.uk)  
[www.adelwills.co.uk](http://www.adelwills.co.uk)



A member of the Institute of Professional Willwriters  
This firm is compliant with the IPW Code of Practice





Highways Today  
Jaguar Cars  
Kamec UK  
Kier Group  
Leeds Cares  
Leeds Children's Hospital  
Leeds City College  
Leeds City Council  
Leeds Trinity University  
Mole Valley Asset Management  
Northern Powergrid  
NSPCC  
Persimmon Homes  
Q Parks  
Ringway  
Sevensun Agency  
The Business Desk  
Town Centre Securities  
Unity Club  
University of Bradford  
University of Leeds  
Verity Group Ltd  
Volker Rail  
West Yorkshire Consortium  
of Colleges



Books available from all  
good book stores and online

## ADEL WAR MEMORIAL ASSOCIATION Adel Sports and Social Club



Archery, Badminton, Bowls,  
Cricket, Football, Hockey,  
Lacrosse, Snooker, Softball,



**Squash and Tennis are all played at Adel**

**Most sports have Junior Sections  
with fully qualified coaches**

**Social Membership just £15 per year**

**Adel Players produce 3 plays per year**

**Tickets can be obtained from  
[boxoffice@adel-players.org.uk](mailto:boxoffice@adel-players.org.uk)  
or 0113 275 5585**



**Rooms available for Hire**

**From the main hall for weddings and special  
events to smaller rooms for office  
training days, children's parties,  
meetings etc.**



**Lounge and bar facilities available for  
Funerals and events during the day**

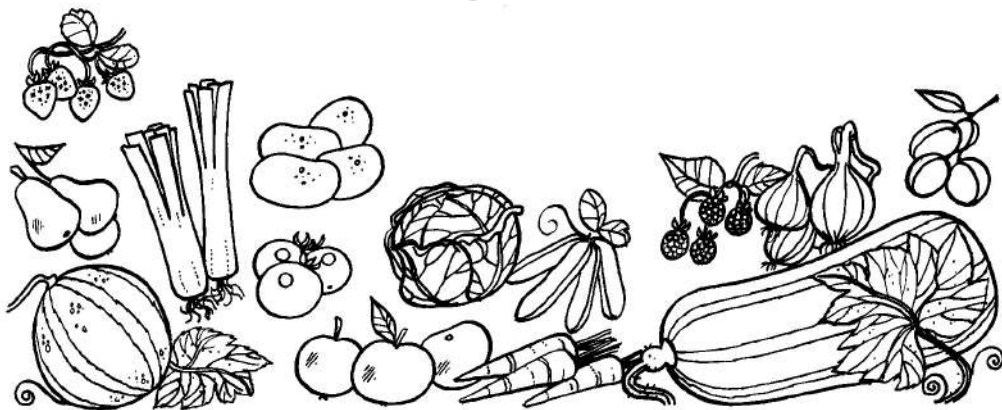
**For details contact Eszter Saxton on  
07765 427 290 or  
[awma.manager@virginmedia.com](mailto:awma.manager@virginmedia.com)**

**Alternatively please check out our Web site  
[www.adelclub.co.uk](http://www.adelclub.co.uk)**



# Harvest Festival

## 15th October



MSC Joinery Building & Roofing Services  
Proudly supports Adel Bells



LABC Award-winning builders with over 35 years experience.  
Quality workmanship guaranteed

07802816611 ♦ 07971810690  
msc.cornell@btinternet.com  
msc-building.co.uk

## ROXTON TREE SERVICES

### ALL ASPECTS OF TREE WORK UNDERTAKEN

Large and dangerous trees safely removed      All work carried out to British Standard 3998

Crown lifting and general pruning

Tree Preservation Orders checked

Hedge reduction/removal

Seasoned logs for sale (free delivery)

Stump grinding

Woodchip available

Fully Qualified and Insured

### FREE QUOTATIONS

tel: **0113 268 2235** mobile: **07773 298 770**

e-mail: **roxtontreeservices@gmail.com**  
**roxtontreeservices.com**

### 6 Floors of Beds & Bedroom Furniture Bedside Manor

108 – 112 Burley Road Leeds LS3 1JP  
(Behind Yorkshire Television)

0113 24 25 600      Email: [BSM6floors@aol.com](mailto:BSM6floors@aol.com)  
See us on Facebook

Our family business has been supplying quality beds and bedroom furniture to discerning customers for over 21 years.

We know just how important it is for you to make the right choice for sleeping comfort and to suit your lifestyle.

Our personal service assures you of the best advice to help you select from our wide ranges of mattresses, divan beds, bedframes and bedroom furniture.

Bespoke options are also available so you can achieve the look to complement your bedroom

Come along and see us: We're open 7 days.

**Bring this with you and receive an extra 10% off\***

\*Excludes Sale Items





## Two outstanding care homes in Yorkshire



Adel Manor and Guiseley Manor, both located on Otley Road, are outstanding care homes offering residential, dementia and 24hr nursing care.

Part of New Care, the two Yorkshire facilities provide expertly designed home-from-home environments, with residents benefiting from individual person-centred care. They feature private bedrooms with en suite wet rooms, stylish communal lounges and dining rooms, a hairdresser and nail salon, plus beautifully landscaped gardens. A chef prepares nutritional meals daily whilst the wellness team coordinate stimulating activities

This what some of our residents and relatives had to say:

*"Excellent!"*

*"Very attentive service from the minute you walk through the door."*

*"The facility is exceptional."*

*"Every member of staff shows kindness, support and care."*

For more information, or to arrange an appointment to view either Adel Manor or Guiseley Manor, please call the team on the numbers below or email [enquiries@newcarehomes.com](mailto:enquiries@newcarehomes.com)



Guisley Manor Care Centre Otley Road, Guiseley, Leeds LS20 8FE Tel: 0113 323 0200  
Adel Manor Care Centre Adel Gardens, Otley Road, Leeds, LS16 7FP Tel: 0113 841 1000  
[newcarehomes.com](http://newcarehomes.com)



## BUILDING COMPANY NO JOB TOO SMALL

ALL WORK CARRIED OUT  
TO A PROFESSIONAL STANDARD



- RENDERING
- PLASTERING
- PAINTING
- ARTIFICIAL GRASS
- BOX POINTING
- PATIOS



FOR FREE  
QUOTES & ENQUIRIES  
075 14 276 756



# Locksmith & Security Installer

- Lock Upgrades
- CCTV & Alarm Installation
- Door & Window Repairs
- Safe Fitting
- Call for a free security assessment

Call Andy: 07721876571

**LEMONLOCKSMITH.CO.UK**

DBS CHECKED - CITY & GUILDS CERTIFIED

*Covering Stanley & Nearby Areas*

## LAWRENCE GAUNT OPTICIANS

Ireland Wood Surgery  
Iveson Approach, Leeds, LS16 6FR

Professional  
Comprehensive Eyecare  
Family Opticians since 1978  
Personal Service  
Friendly Independent Advice

**0113 267 9547**

info@lawrencegauntopticians.co.uk  
www.lawrencegauntopticians.co.uk  
*professional eye care with a smile*

Full wheelchair access  
Free on-site parking  
Home visits available

## Ribbons INTERIORS

curtains...blinds...soft furnishings...upholstery

10 The Crescent, Adel, LS16 6AA  
tel: (0113) 3457424  
www.ribboninteriors.co.uk

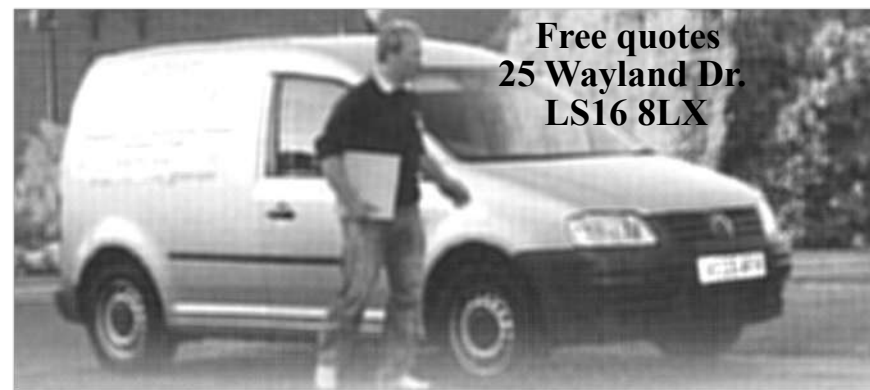
affordable, aspirational interior design  
based in Adel, from individual pieces to  
full room makeover

now stocking paint from Hicks & Weatherburn



**RIBBONS INTERIORS**

design...make...source...fit



Free quotes  
25 Wayland Dr.  
LS16 8LX

## ADEL TILING SOLUTIONS

Brian Hurst has over 20 years experience in tiling. If you are looking for an experienced local tiler to get the job right, first time, call **0113 368 9769** or **07712 896711**, email: **brian\_hurst\_@msn.com**  
No job too big or too small. Cleaning & re-grouting/ silicone removal, ceramic floor & wall tiling inc. mosaic & stone products.

## ADEL GARDEN CARE

**Is your garden in need of some extra care?**



We are experienced in all aspects of plant care including border maintenance, weeding, pruning, training climbers, wildlife gardens, renovating shrubs.

We install fencing & decking, jetwash patios, revitalise ponds.

**Contact us for a free estimate:  
07815 206610**

[www.adelgardencare.co.uk](http://www.adelgardencare.co.uk)

[enquiries@adelgardencare.co.uk](mailto:enquiries@adelgardencare.co.uk)

## SLATER'S FUNERAL SERVICE

**Genuine Independent Family Business  
Established 1884**

**138 years caring for the deceased and  
bereaved families, offering a personal,  
caring and dignified  
24 hour service covering all areas**

**Oakford House, 291 Low Lane, Horsforth,  
LS18 5NU**

**Tel 0113 258 2395**

[www.slatersofhorsforth.co.uk](http://www.slatersofhorsforth.co.uk)



### **LOCAL PROFESSIONAL LOCKSMITH**

**24 HOUR CALLOUT WITH NO CALL OUT CHARGE**

**10% DISCOUNT FOR OAP's AND STUDENTS**

**New Locks Fitted - Changed - Replaced Burglary Repairs & Boarding Up**

**Snapped Keys in Locks - Fixed Defective Locks Repaired Replaced**

**Locked Out? Rapid Response – 20 MINUTES**

**UPVC Window & Door Specialists**

**All Types of Locks & Keys Supplied British Standard Locks Fitted**

**TEL:07947160788**

## **Matthew Holmes**

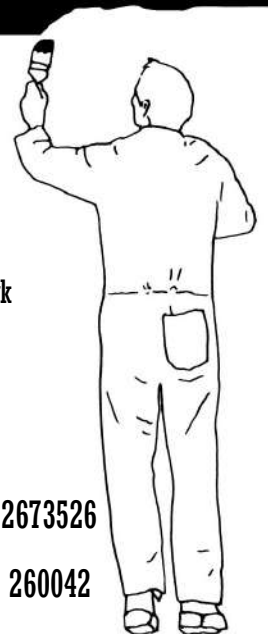
*Domestic and Commercial  
Painter and Decorator*

High quality work  
Clean, reliable, friendly  
Over 26 years experience

Interior & exterior work  
Paper hanging  
Coving

4 New Adel Avenue,  
Adel, Leeds, LS16 6BE  
Email: [mholmesdecorating@live.co.uk](mailto:mholmesdecorating@live.co.uk)

Home: 0113 2673526  
Mobile: 07725 260042





## Musical Aire



**ISM**  
MEMBER

Want to learn or improve saxophone, clarinet or flute?  
I offer day and evening lessons for adults and children in Adel  
Free taster session with no obligation  
Fun, patient and individual tuition, based on what you want to achieve  
Contact me to see how I might help:  
[Caroline@musicalaire.co.uk](mailto:Caroline@musicalaire.co.uk) 07493 327315  
Professional flute and harp duo "Chestra" also available  
for weddings and events  
Member of the Incorporated Society of Musicians

## BUILDING, JOINERY

## AND ROOFING CONTRACTOR

Catering for all your building requirements

Over 35 years in  
the trade  
All works  
guaranteed

For a free inspection  
and quotation  
please call Alan on  
07856 535 677

## Local health and fitness club



Offering a friendly gymnasium, fitness  
studio, leisure pool, spa pool, steam and sauna  
rooms

Come along for a free trial  
Or for more information on membership call  
0113 2699010  
[Hannah.bullock.020@jupiterhotel.co.uk](mailto:Hannah.bullock.020@jupiterhotel.co.uk)



Feel Good Health Club  
Mercure Leeds Parkway  
Otley Road  
Bramhope, Leeds LS16 8AG





**MISTY MAX**  
MISTY WINDOW REPAIR



**BEFORE** **AFTER**

Misty / Steamed Up / Foggy Glass? **07721876571**  
[mistymax.co.uk](http://mistymax.co.uk)

# Adel Pharmacy

141 Long Causeway  
Adel Leeds

♦ Enquiries, please phone **0113 230 0351**

♦ Excellent parking

♦ Collections & delivery of prescriptions where necessary,  
free of charge week days only

Monday	8.15-12.30 14.00- 18.00	Thursday	8.15-12.30 14.00-1700
Tuesday	8.15-12.30 14.00-17.30	Friday	8.15-12.30 14.00-18.00
Wednesday	8.30-12.30	Saturday and Sunday	CLOSED

## Aerial Solutions

**A Family run Leeds business with over 30 years experience**

**All work guaranteed**

**Debit & Credit card payments welcome**

**7 Day Service**

**Extra TV/Sky points from £40**

**Dish & Freesat Installations**

**CCTV Installations**

**OAP Discount**

**Ring 0113 512 6127**

**FREE 0800 328 7517**

**\*on all supplied & installed equipment**



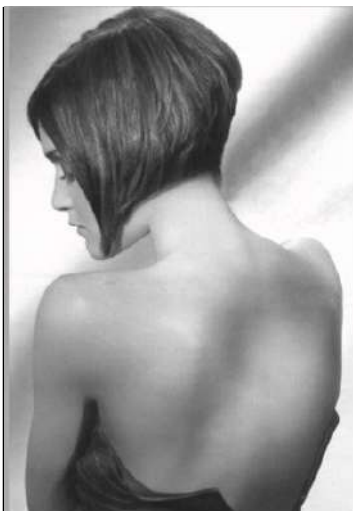
## D. P. A. FLETCHER (BUILDERS) LTD

**All aspects of Building, Joinery  
& Property Repairs**

**(with over 30 years of experience)**

**Tel: 0113 263 0515**

**[jackie.dpafletcherbuilders@gmail.com](mailto:jackie.dpafletcherbuilders@gmail.com)**



## Padd Hair Studio

6 The Crescent  
Adel  
Leeds LS16 6AA

**Opening Hours**  
**Tues 9am—3pm**  
**Wed 9am—4pm**  
**Thurs 9am—7pm**  
**Fri 9am—4pm**  
**Sat 8am - 2pm**

**Tel 0113 267 4388**

We are a well-established friendly salon run by Andrea Petrou for over 12 years. We are tucked away on a little parade of shops on The Crescent behind the Co-op on Otley Road.

There are four stylists, two assistants and a junior. Our clients are **men, women, teenagers and children**. We have entire families who have over the years become friends and we have enjoyed watching the younger members growing up.

**SPECIAL INTRODUCTORY OFFER FOR  
ALL NEW CUSTOMERS**

**Offer available through the week  
Cut & Style for just £25.00**

**QUOTE ADEL BELLS TO CLAIM YOUR VOUCHER**

**Find us on Facebook**



R. Pearson  
Electrical and Plumbing

R Pearson Electrical and Plumbing  
All aspects of Electrical and Plumbing work undertaken

Consumer unit upgrades/ periodic testing  
Internal and External Electrics and Lighting  
Electric and Gas Cooker/Hob Supply and Installation  
CCTV Security Systems and Intruder Alarms  
Flat Screen TV and AV Installation  
Fault finding and rectification  
Gas Safe Repairs  
Boilers and Boiler Services  
Leaking Taps  
Radiator Changes  
Bathrooms  
Outdoor Taps



**Free Quotations**  
**Tel: 07796000600**

**enquiries@rpearsonelectricalandplumbing.co.uk**  
**www.rpearsonelectricalandplumbing.co.uk**

SERVING FAMILIES FOR GENERATIONS



**FUNERALS FROM £995\***  
Unattended Funerals | Chapel Service  
Attended Funerals

**J. E. Spence Funeral Service**  
Lawnswood Funeral Home, Otley Road,  
Adel, Leeds, West Yorkshire LS16 8AA  
0113 268 2842

We're here for you anytime.  
Whatever your wishes or budget,  
we can provide a funeral to suit you.

**J. E. Spence**  
*Taking the greatest care  
in and around Leeds*

**DIGNITY**  
FUNERAL SERVICES

dignityfunerals.co.uk/local

\*Pricing is correct at time of going to print and is subject to change. Price stated is for an Unattended Funeral



## DOES YOUR CHILD NEED SUPPORT WITH LITERACY AND NUMERACY?



I offer tuition for 4-7 year olds,  
am experienced, patient and  
believe that learning can be fun!  
Police checked (D.B.S)

Please contact **Glenis Moss** on  
**07960 838116**



**Proud to be  
supporting our  
local community**

**READY TO TAKE YOUR CALL**  
**8AM-8PM**  
**7 DAYS A WEEK**

## APplastering



Fully qualified plasterer  
over 30 years experience  
Fully insured  
All plastering work undertaken  
Internal and external  
No job too small from  
patching to full house

For a competitive quote  
call Andy on 07814705238



**QUBIX**  
PLUMBING & HEATING

**PLUMBING  
& HEATING**

Here at Qubix Plumbing & Heating we offer our services  
largely to domestic household. We cater to everything  
that is plumbing, gas, heating, bathrooms and boilers.

- All Plumbing & Gas Works
- Plumbing Maintenance
- Emergency Services
- Bathroom Installations
- Boiler Quotes
- Boiler Installation
- Boiler Servicing
- Boiler Repairs
- Heating Repairs
- Leak Repairs
- Power Flushing
- Gas Safety Certificates
- Landlord Certificates
- & More...

Please contact us for more details  
**07761 215868**

@ Qubix Plumbing & Heating  
enquires.qubixplumbing@gmail.com

Facebook





Specialist Treatment For:

- Stroke
- Parkinson's Disease (PD)
- Multiple Sclerosis (MS)
- Dementia
- Falls
- Spinal Injuries
- Brain Injuries
- Pain
- Functional Neurological Disorder (FND)
- Movement Disorders
- Cerebral Palsy
- Developmental Coordination Disorder (DCD)

If you would like to arrange an appointment with one of our specialist physiotherapists at our clinic in Rawdon or in your own home please call us on 0113 250 8833, email us at [practice@leedsneurophysiotherapy.co.uk](mailto:practice@leedsneurophysiotherapy.co.uk) or contact us via our website at [www.leedsneurophysiotherapy.co.uk](http://www.leedsneurophysiotherapy.co.uk)



**Trade and DIY Welcome**

Our family business supplies a wide range of garden and landscaping materials from our quarry in Bramhope, Leeds



Topsoil, sand, gravel, slate and many types of stone. Available loose or in bags. Collect or delivery.

**Blackhill Quarry**  
Kings Road, Bramhope, Leeds LS16 8BG  
T: 0113 267 4386  
Open: Mon-Fri: 7am-5pm, Sat: 7am-1pm

**www.MONEBROSdiy.co.uk**



HELP YOUR CHILD REACH THEIR  
**FULL LEARNING  
POTENTIAL**



Primary - Secondary • Qualified Teachers • Personalised Learning Programmes

**At Kip McGrath, our focus is to help your child reach their full potential.**

We make learning fun and engaging to improve results. You will receive progress reports and updates to track your child's improvement.

English and Maths Tuition



In Centre



Online

Book a **free** assessment today

Adel 07815 760509

485 Otley Road LS16 7NR

[kipmcgrath.co.uk/leedsadel](http://kipmcgrath.co.uk/leedsadel)





## North Leeds Physiotherapy and Sports Injuries Centre

**Sarah Beldon MCSP HCPC**  
The Police House  
Church Close  
Pool in Wharfedale  
LS21 1LN

**Please ring 07908 151 241**  
Daytime and evenings available  
Home visits still available within reasonable  
distances.

**APPI Physiotherapy led modified Pilates Classes in  
Adel Stables—days or evenings**



Female painter and  
decorator  
20 years' experience.  
Professional and reliable  
Tel: 07398 882 306 or  
Email  
harperddiy@gmail.com  
**Taking bookings for  
2023**

**BLUEBERRY**  
AUTOMATION



Supply & install **Garage Doors**, fully  
automated, Sectional, Rollers, Up&Over  
& more, from new installs to repairs we  
are family run with over 20 years'  
experience. All doors have built in safety  
& courtesy light with 1000's colours,  
**Police rated** & Insurance approved as  
standard!

Now recognised as Yorkshire's leading  
Somfy expert and home automation  
specialist, we also supply & install  
motorised **Awnings & Blinds**

Web: [blueberryautomation.co.uk](http://blueberryautomation.co.uk)  
Email: [blueberryautomate@gmail.com](mailto:blueberryautomate@gmail.com)  
Phone: 07479 662021 0113 232 9463

# CHIROPODY

**Nick Simpson BSc Podiatry (Hons) MCPod**

An essential health care service

at

**WELCOME IN**

Community Centre  
55 Bedford Drive (off Tinsill Lane)  
Ireland Wood  
LS16 6DJ

**Tel. 07751 078787**  
(by appointment only)

Health & Care  
Professions Council  
&  
Simply Health registered



## Family Run Italian Restaurant

429 Otley Rd,  
Adel, LS16 6AJ  
Tel: 2672671  
for reservations

Ristorante  
**SORRISO**

View our menu on line at  
[www.sorrisoleeds.co.uk](http://www.sorrisoleeds.co.uk)

### Opening Hours

Monday-Thursday 12 - 2.30pm  
and 5 - 9pm  
Friday & Saturday 12 - 9.30pm  
Sunday 12 - 9pm

**Takeaway delivery available  
every day**

## Advertising

The magazine is published 10 times a  
year and goes out to 440 homes except  
for June when we circulate the whole  
parish  
(2800 homes)

Full page £140 per annum

Half page £80 per annum

Quarter page £50 per annum

+ £20 for alterations

For further information contact:

**Beryl Thompson**  
10 New Adel Gardens,  
Leeds LS16 6BD



**0113 267 3875**  
[beryl890@btinternet.com](mailto:beryl890@btinternet.com)

## *Index of Advertisers*

<b>Aerials &amp; Satellites</b>		<b>Hair and Beauty</b>	
50	Aerial Solutions	51	Padd Hair Studio
<b>Beds</b>		<b>Health Care</b>	
40	Bedside Manor	41	Adel Manor Care Home
<b>Home Improvements</b>		48	Mercure Health Club
39	MSC	55	Leeds Neurophysiotherapy
42	Hinton's	57	North Leeds Physiotherapy
44	Ribbons	58	N. Simpson, Chiropodist
47	Alan	<b>Leisure Interests</b>	
49	Window Repairs	36	Meet the Cones
50	DPA Fletcher Ltd	38	Adel War Memorial Association
54	APplastering	<b>Locksmith</b>	
57	Blueberry Automation	43	Locksmith & Security Installer
<b>Building Supplies</b>		46	The Lockdoc
55	Mone Bros.	<b>Opticians</b>	
<b>Education</b>		44	Lawrence Gaunt
47	Musical Aire	<b>Painters &amp; Decorators</b>	
54	Glenis Moss Tuition	46	Matthew Holmes
56	Kip McGrath	57	Harperddiy
<b>Electrical &amp; Plumbing</b>		<b>Plumbers</b>	
52	Pearson	54	QUBIX
<b>Estate Agents</b>		<b>Pharmacies</b>	
53	Manning Stainton	49	Adel Pharmacy
<b>Food Outlets</b>		<b>Tiling</b>	
40	Caring for Life	44	Adel Tiling Solutions Ltd
58	Ristorante Sorriso	<b>Wills</b>	
<b>Funeral Directors</b>		35	Jane Wintringham
45	Slater's		
53	J E Spence Ltd		
<b>Gardening Services</b>			
40	Roxton Tree Services		
45	Adel Garden Care		

## Church Services in October

<b>Sunday 1st</b>	<b>Seventeenth Sunday after Trinity</b>	
	8.30am	Holy Communion (BCP)
	10am	Parish Communion
	6.30pm	Evensong
<b>Wed 4th</b>	11am	Holy Communion
<b>Fri 6th</b>	1.30pm	J Js (for the under sixes)
<b>Sunday 8th</b>	<b>Eighteenth Sunday after Trinity</b>	
	8.30am	Holy Communion (BCP)
	10am	Parish Communion
	5pm	ACE meeting in the Stables
<b>Wed 11th</b>	11am	Holy Communion
<b>Sunday 15th</b>	<b>Harvest Festival</b>	
	8.30am	Holy Communion (BCP)
	10am	All Age Service with Communion
	6.30pm	Choral Evensong followed by light refreshments
<b>Wed 18th</b>	11am	Holy Communion
<b>Thurs 19th</b>	3.15pm	Holy Communion in the Stables, with tea & coffee
<b>Sunday 22nd</b>	<b>Twentieth Sunday after Trinity</b>	
	8.30am	Holy Communion (BCP)
	10am	Parish Communion
	5pm	ACE meeting in the Stables
<b>Wed 25th</b>	11am	Holy Communion
<b>Sunday 29th</b>	<b>Last Sunday after Trinity</b>	
	8.30am	Holy Communion (BCP)
	10am	Parish Communion
	6.30pm	Memorial Service (see p.7)

**Junior Church** is held during term time, but not on the 3rd Sunday when there is a 10am All Age service, with communion, and children are welcome for the whole of the service in church.

**ACE** is a group for school year 4 and above. We meet in the Stables to discuss our faith and play silly games.